

CUYAHOGA & LAKE COUNTIES
CUY-I-15.91
LAK-I-0.00

Ref. No.	Station		Side &	I-15 Guard Rail Div. No. 2A Lin. Ft.
	From	To		
1-R	13116.27	15141.47	Rt.	225.00
2-R	13105.90	14151.90	Lt.	150.00
3-R	14772.73	15443.73	Lt.	75.00
Total:				450.00

See Sheet No.	Ref. No.	Station		Side &	B-10			T-30		T-35	
		From	To		Aggregate Base Course	Bituminous Prime Coat	Asphalt Conc. Surf. Course	Aggregate Base Course	Bituminous Prime Coat	Asphalt Conc. Surf. Course	
344	1-P	12+82		Lt.	16	5	8	38	1	5.0	
	2-P	11+60	12+00	Rt.						2.0	
344	3-P	14+61		Lt.	15	22	13	28	1.9	4.0	
Totals:					31	27	21	66	2.9	11.0	

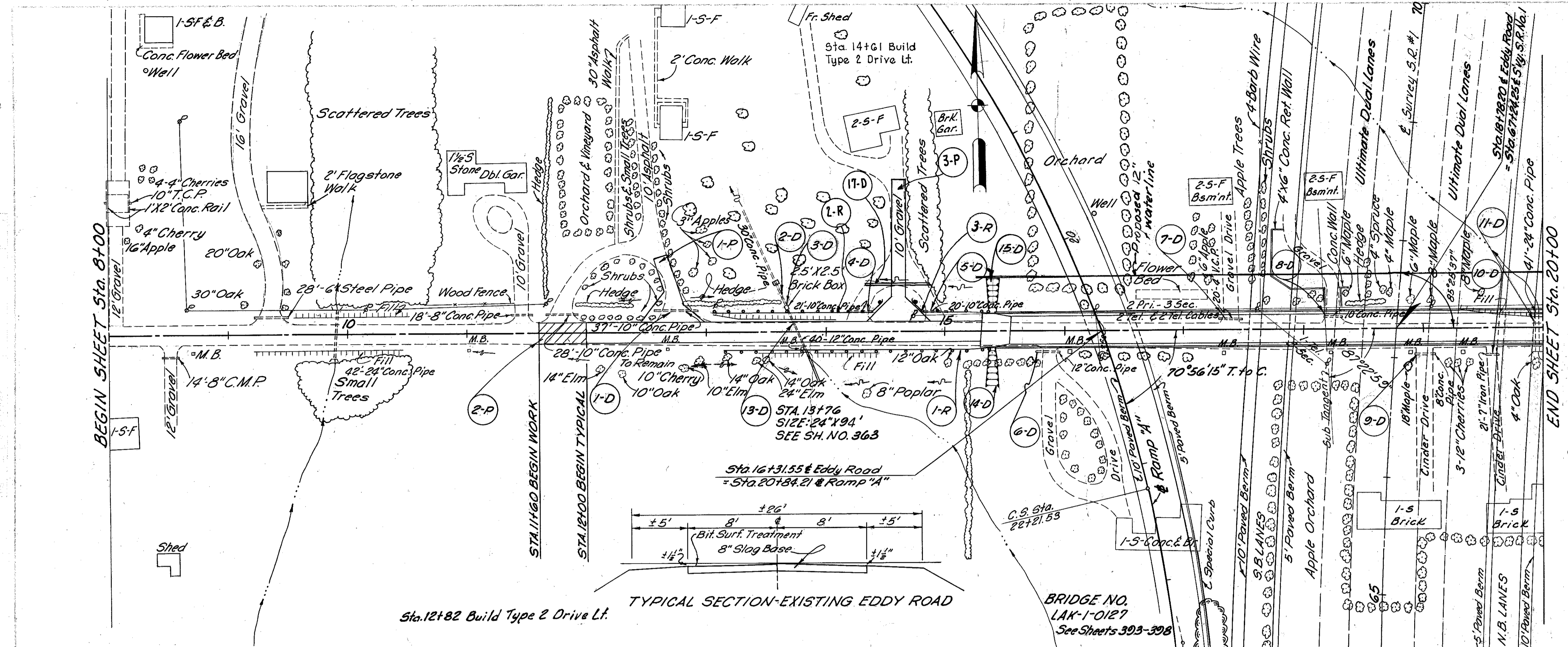
See Sheet No.	Ref. No.	Station	Side &	Type	E-12 Pipe Removed		15' Under	12"	Each	Lim. Ft.						
					Over 15'	Under 15'										
	I-9															
	L-10															
	I-16															
	I-1															
	E-12															
	I-1															
	I-16															
	L-10															
	I-9															
Totals:										213	61	56	1	8	57	142

REVISIONS:
3-31-60 Grade Raise for 16'-4" Br. Cl.

MICHAEL BAKER JR., CONSULTING ENGINEERS
ROCHESTER, PENNSYLVANIA

STATE OF OHIO
DEPARTMENT OF HIGHWAYS
STATE HIGHWAY NO. 1
C-42
EDDY ROAD - PLAN & PROFILE
STA. 8+00 - STA. 20+00

Designed	Drawn	Traced	Checked	Reviewed Date	Revised
B.P.	A.H.	A.G.	L.I.		



TYPICAL SECTION-EXISTING EDDY ROAD

