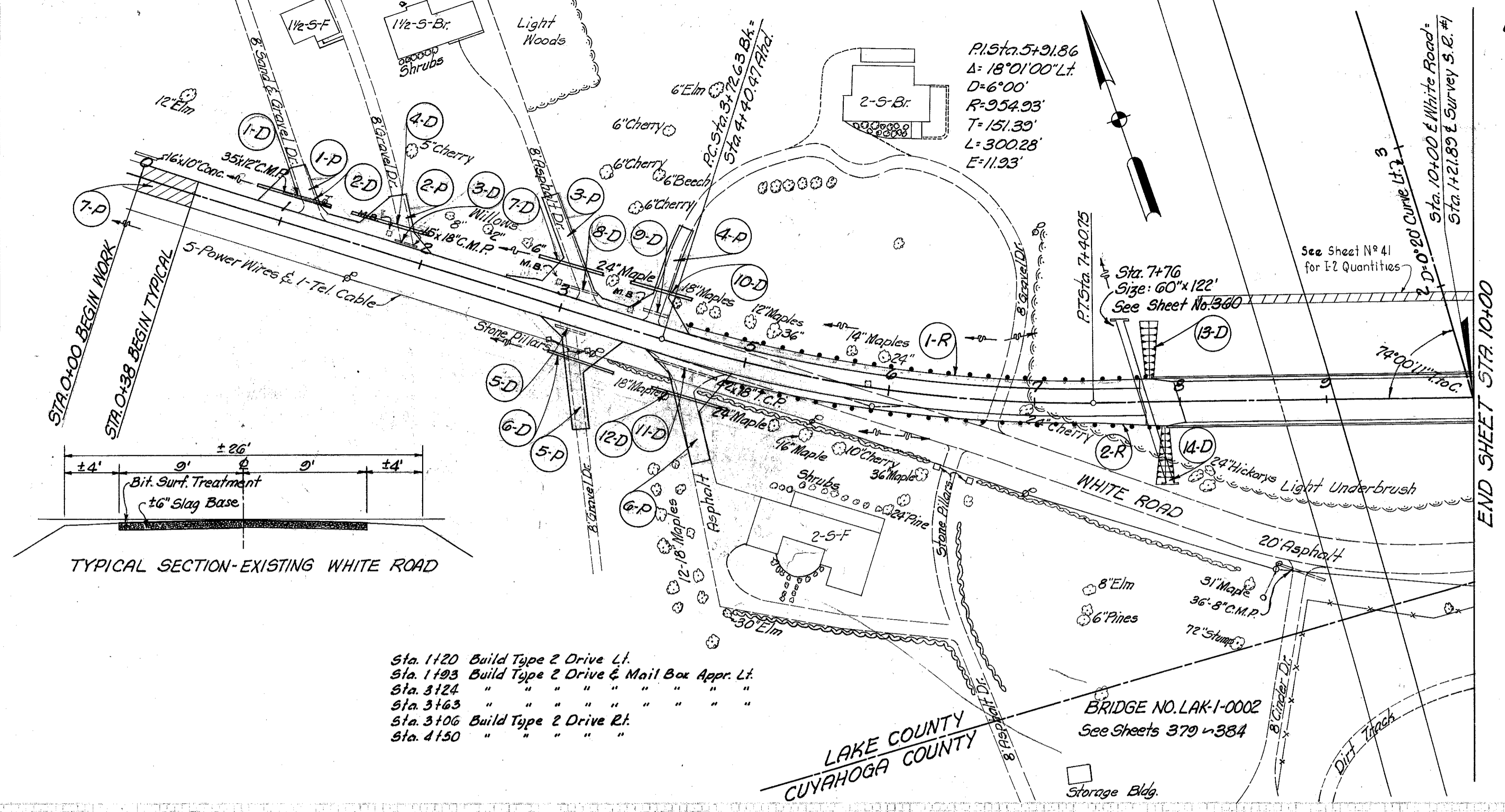


9-5

S-15

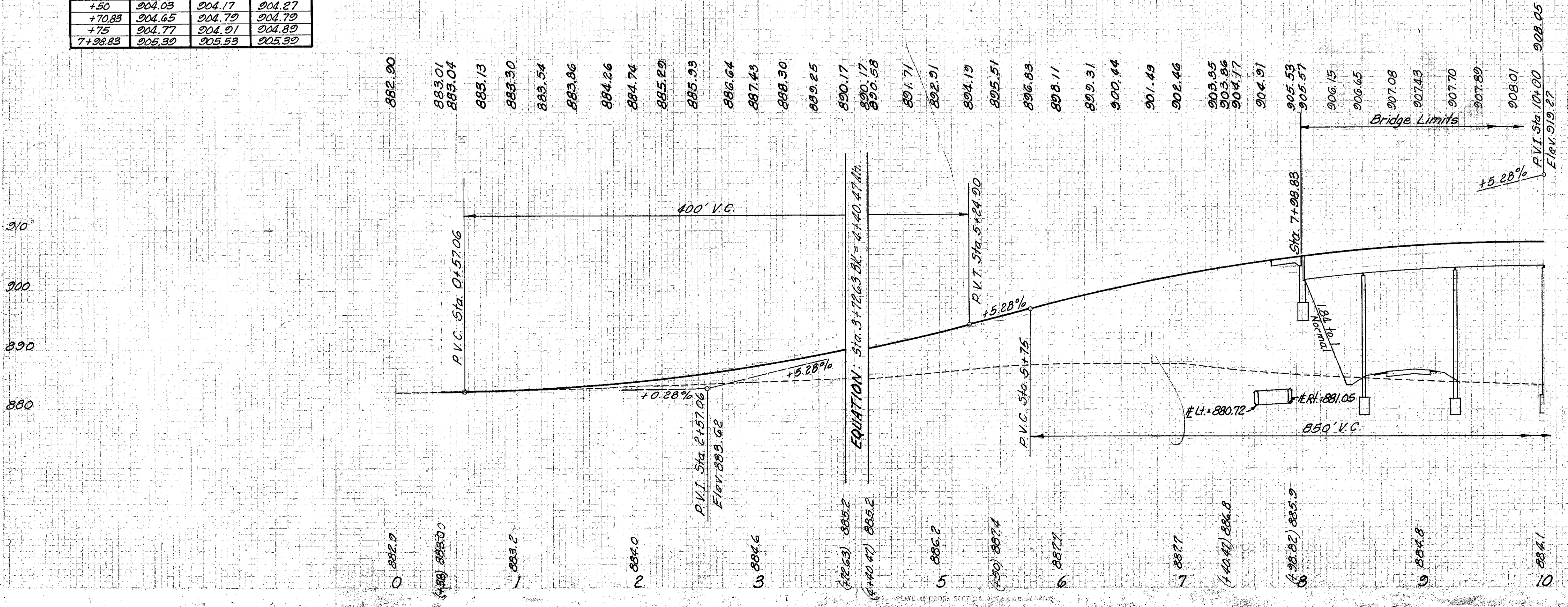
See Sheet No.	Ref. No.	Station	Side &	PAVEMENT						
				8-19		T-30		T-35		
				Aggregate Base Course	Prime Coat	Asphalt Concrete Surface Course	Cu Yds.	Gals.	Cu Yds.	Gals.
344	1-P	1+20	Lt.	15		43		6		
344	2-P	1+93	Lt.	15		43		6		
344	3-P	3+24	Lt.	25		71		9		
344	4-P	3+63	Lt.	16	8	31	2	4		
344	5-P	3+06	Rt.	20	8	50	1	7		
344	6-P	4+50	Rt.	23		65		9		
344	7-P	0+00	Rt.	23		65		9		
Totals:				114	16	23	303	3	43	

SUPERELEVATION TABLES			
Station	Lt. Edge	& Profile	Rt. Edge
2+41.63	885.57	885.71	885.57
+50	885.79	885.93	885.81
+75	886.50	886.64	886.58
+97.63	887.21	887.35	887.35
3+00	887.29	887.43	887.44
+25	888.16	888.30	888.44
+50	888.99	889.25	889.51
3+72.63 = 4+40.47	889.79	890.17	890.55
+50	890.15	890.58	891.01
+75	891.16	891.71	892.26
5+00	892.24	892.91	893.58
+15.47	892.24	893.69	894.44
+25	893.44	894.19	894.94
+50	894.76	895.51	896.26
+75	896.08	896.83	897.58
6+00	897.36	898.11	898.86
+20.83	898.37	899.12	899.87
+25	899.58	899.31	900.04
+50	899.84	900.44	901.04
+75	901.01	901.49	901.97
7+00	902.11	902.46	902.81
+25	903.12	903.35	903.58
+50	904.03	904.17	904.27
+70.83	904.65	904.79	904.79
+75	904.77	904.91	904.89
7+98.83	905.39	905.53	905.39



TYPICAL SECTION-EXISTING WHITE ROAD

- Sta. 1+20 Build Type 2 Drive Lt.
- Sta. 1+93 Build Type 2 Drive & Mail Box Appr. Lt.
- Sta. 3+24 " " " " " " " " " " " "
- Sta. 3+63 " " " " " " " " " " " "
- Sta. 3+06 Build Type 2 Drive Rt.
- Sta. 4+50 " " " " " " " " " " " "



CUY-271-14.09  
LAK-271-000

FED. RD. DIVISION	STATE	PROJECT	240
2	OHIO	I-1102 (6)	458

CUYAHOGA & LAKE COUNTIES  
CUY-1-15.91  
LAK-1-0.00

ROADWAY					
Ref. No.	Station		Side &	Guard Rail Dwg. No. 2A	Lin. Ft.
	From	To			
1-R	4+45.35	7+82.85	Lt.		337.5
2-R	4+78.47	7+90.97	Rt.		312.5
Total:					650.0

See Sheet No.	Ref. No.	Station	Side &	DRAINAGE		Totals:
				From	To	
1-0	0+75	1+31	Lt.	35		
2-0	0+78	1+28	Lt.	15		
3-0	1+74	2+00	Lt.	26		
4-0	1+44	2+00	Lt.	56		
5-0	3+00	3+24	Lt.	24		
6-0	3+00	3+24	Rt.	46		
7-0	2+78	3+24	Lt.	20		
8-0	3+02	3+24	Lt.	19		
9-0	3+53	3+72	Lt.	42		
10-0	3+40	4+51	Lt.	42		
11-0	4+42	4+98	Lt.	56		
12-0	4+42	4+98	Rt.	4	45	
13-0	7+17	7+87	Rt.	4	66	
14-0	0+50	7+25	Rt.		145	
Totals:				163	154	150
					8	91
					163	145

REVISIONS:  
3-31-60 Grade Raise for 16' 4" B.C.

MICHAEL BAKER JR., CONSULTING ENGINEERS  
ROCHESTER, PENNSYLVANIA

STATE OF OHIO  
DEPARTMENT OF HIGHWAYS  
STATE HIGHWAY NO. 1  
C-41  
WHITE ROAD, PLAN & PROFILE  
STA. 0+00 TO STA. 10+00

Designed	Drawn	Traced	Checked	Reviewed	Date	Revised
B.P.	H.G.	B.P.	L.I.			