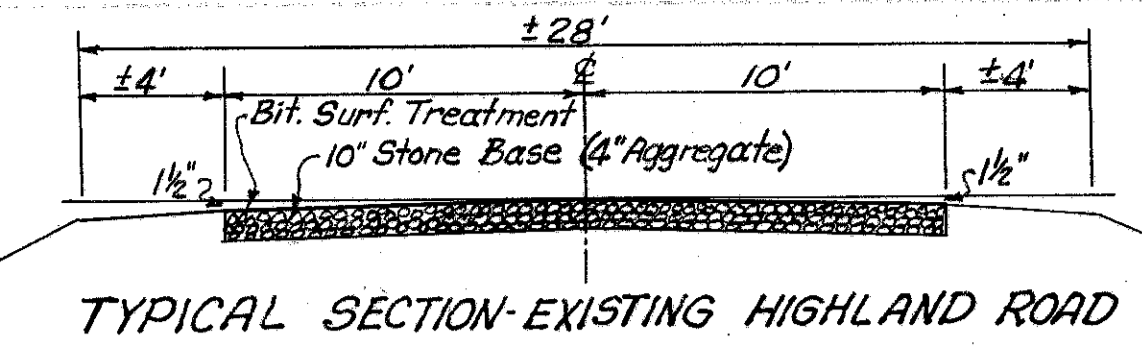


CUYAHOGA & LAKE COUNTIES
 CUY-1-15.91
 LAK-1-0.00



CURVE DATA
 & Survey FAI-14
 P.I. Sta. 79+11.47
 $\Delta = 0^\circ 43' 47''$ Rt.
 $D = 0^\circ 04' 00''$
 $R = 85,939.40$
 $T = 547.27$
 $L = 1094.54$
 $E = 1.74$
 RT Sta. 84+58.74 Back =
 84+48.97 Ahead

ROADWAY				
Ref. No.	Station		Side & Guard Rail Dwg. No. 2A Lin. Ft.	
	From	To		
1-R	7+51.82	7+63.02	Lt.	12.5
2-R	7+49.34	7+67.84	Rt.	12.5
3-R	11+74.20	11+90.20	Lt.	25
4-R	11+72.18	11+97.18	Rt.	25
Total:				75

PAVEMENT							
See Sheet No.	Ref. No.	Station		Side &	Course		
		From	To		Aggregate Base Course	Bituminous Prime Coat	Asphalt Concrete Surface Course
					cu. Yds.	Gals.	cu. Yds.
344	1-P	5+60		Rt.	12	30	0.5
344	2-P	6+45		Rt.	13	39	5.2
344	3-P	12+42		Rt.	16	35	1.4
344	4-P	14+64		Rt.	12	6	0.8
344	5-P	6+00		Lt.	10	27	3.7
344	6-P	6+50		Lt.	10	27	3.7
344	7-P	4+50	5+00	Both	12	12	2.8
344	8-P	13+00	13+45	Both	12	12	2.8
344	9-P	7+00		Lt.	19	48	6.6
344	10-P	7+03		Lt.	15	19	4.0
Totals					105	41	22

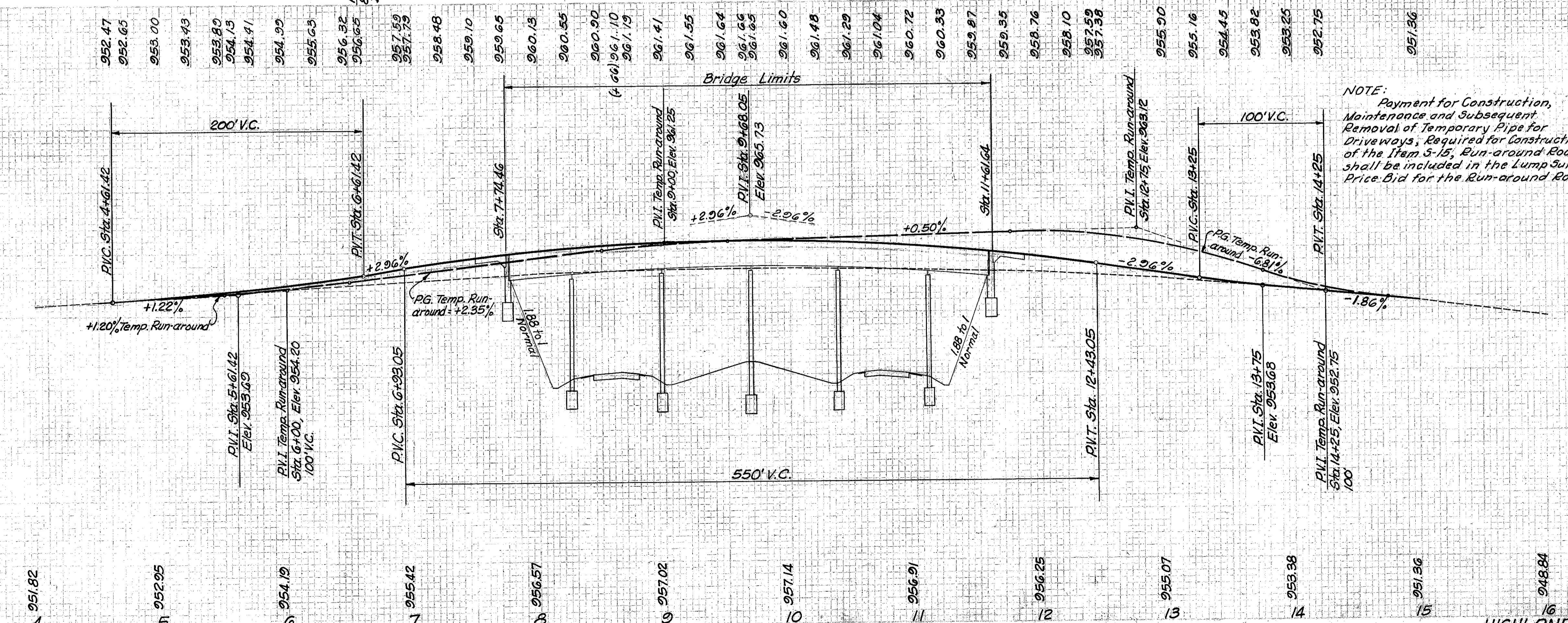
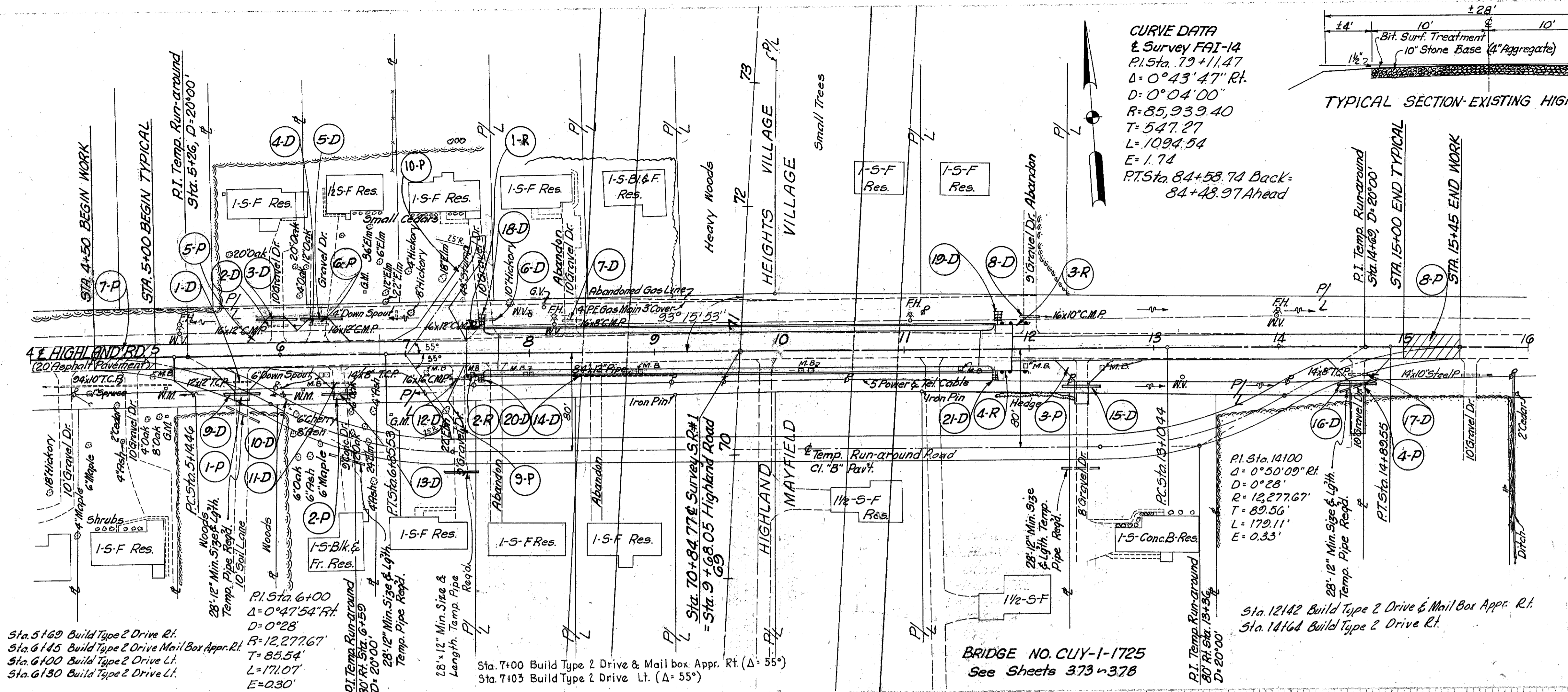
See Sheet No.	Ref. No.	Station	Side &	DRAINAGE		To Totals		
				15" Over	15" Under			
				Lin. Ft.	Lin. Ft.			
337	15-D	7+08				300		
337	20-D	7+65				300		
337	21-D	17+69				300		
337	22-D	5+00				300		
Totals					16	202	16	300

REVISIONS:
 3-31-60 Grade Raise for 16' Dr. Cl.

MICHAEL BAKER, JR., CONSULTING ENGINEERS
 ROCHESTER, PENNSYLVANIA

STATE OF OHIO
 DEPARTMENT OF HIGHWAYS
 STATE HIGHWAY NO. 1
 C-41
 HIGHLAND ROAD, PLAN & PROFILE
 STA. 4+00 TO STA. 16+00

Designed	Drawn	Traced	Checked	Reviewed	Date	Revised
B.P.	H.G.	H.G.	L.I.			



HIGHLAND ROAD PLAN & PROFILE STA. 4+00 TO STA. 16+00