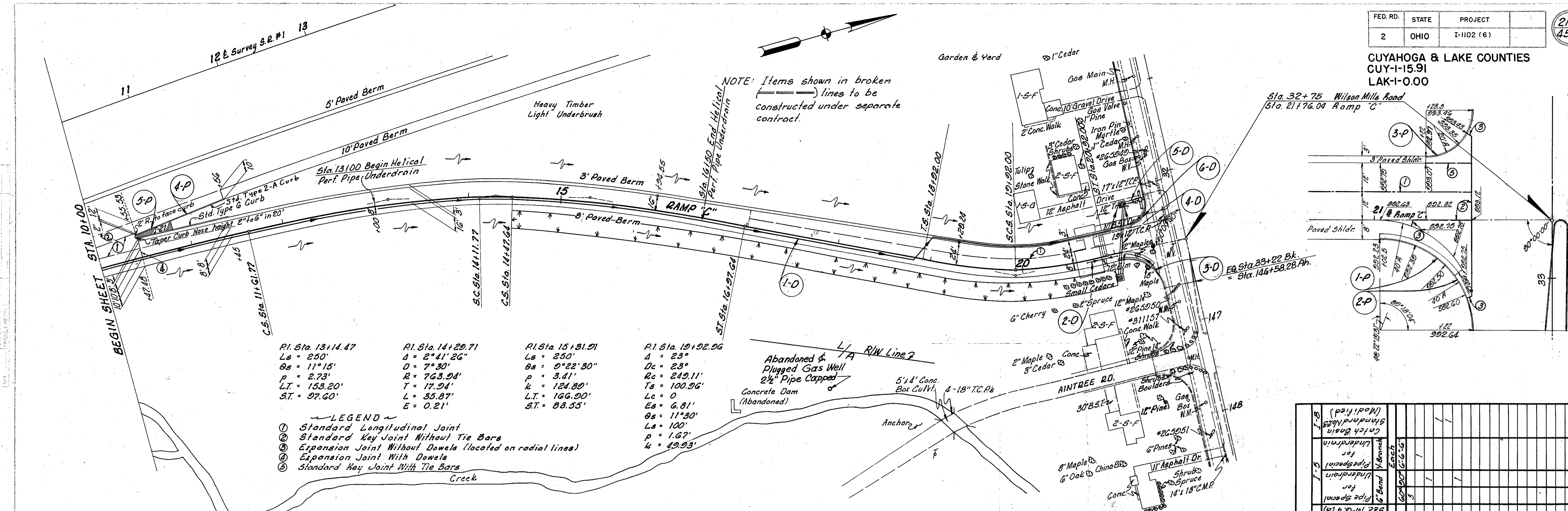


CUYAHOGA & LAKE COUNTIES
CUI-1-15.91
LAK-1-0.00



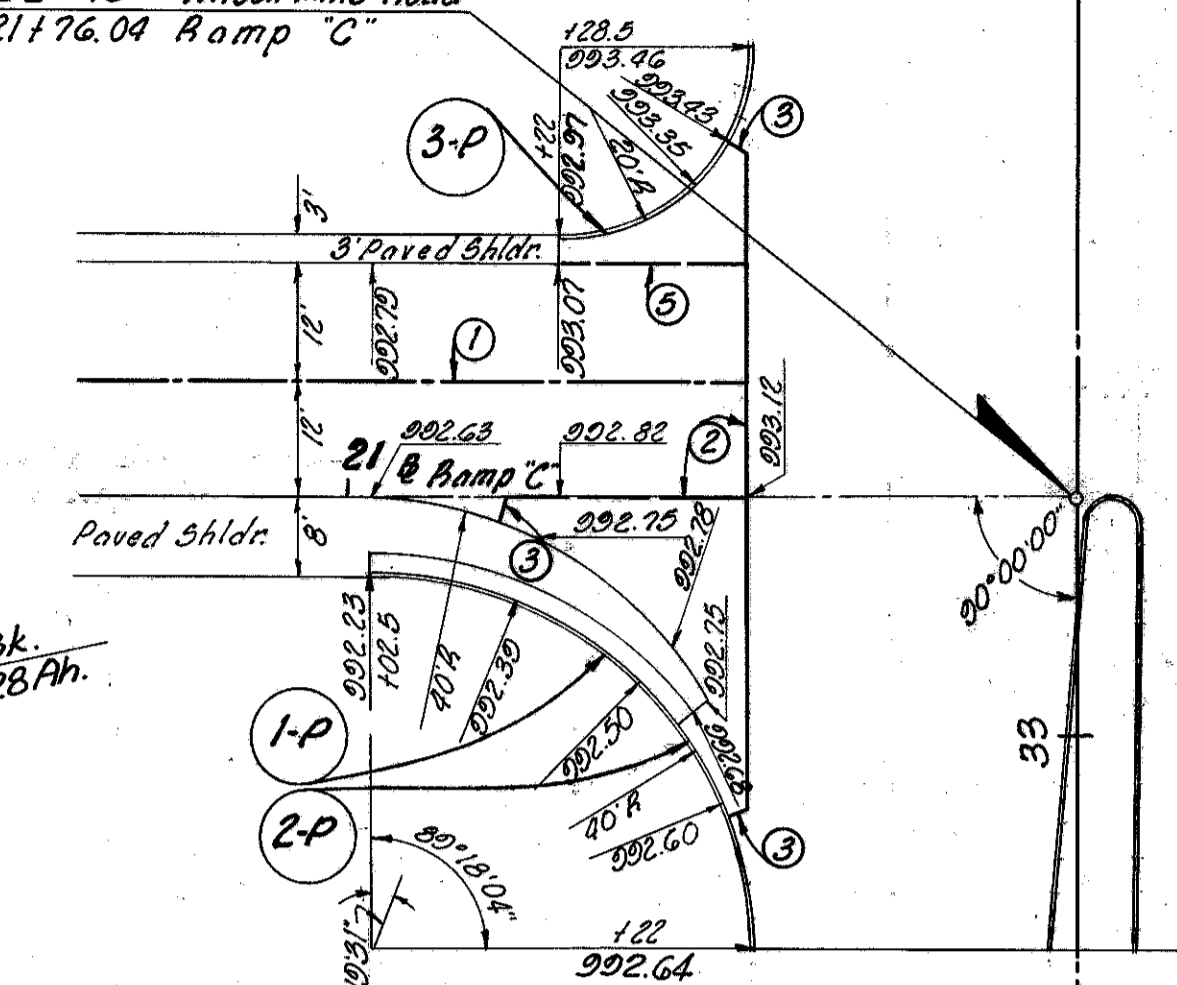
RI Sta. 13+14.47 Ls = 250' Ds = 11°15' P = 2.73' LI = 153.20' ST = 97.60'	RI Sta. 14+29.71 Ls = 241.26' Ds = 7°30' R = 763.94' T = 17.94' L = 35.87' E = 0.21'	RI Sta. 15+31.91 Ls = 250' Ds = 9°22'30" R = 763.94' T = 17.94' L = 35.87' E = 0.21'	RI Sta. 19+92.96 Ls = 23' Ds = 23° Rc = 249.11' Lc = 100.96' Lc = 0 Es = 6.81' Ds = 11°30' Ls = 100' P = 1.67' k = 49.93'
--	--	--	---

- LEGEND
- ① Standard Longitudinal Joint
 - ② Standard Key Joint Without Tie Bars
 - ③ Expansion Joint Without Dowels (located on radial lines)
 - ④ Expansion Joint With Dowels
 - ⑤ Standard Key Joint With Tie Bars

Ref. No.	Station	Side	1-12 Std. Type Conc. Curb	1-12 Conc. Curb	1-21 Conc. Med. Concrete
1-P	21102.50	LI	35		
2-P	21134.50	LI	25		
3-P	21122	LI	31		
4-P	10145	LI		98/103	23
5-P	10146	LI			
Totals:			55	56	98/103 23

Station	Profile Gr. on E	Lt. Edge Pavement	Station	Profile Gr. on E	Lt. Edge Pavement	Station	Profile Gr. on E	Lt. Edge Pavement	Station	Profile Gr. on E	Lt. Edge Pavement
11+61.77	1025.74	1025.99	14+25	1017.64	1018.28	16+57.64	1005.56	1005.84	19+50	994.90	994.68
+75	1025.48	1025.75	+47.64	1016.66	1017.30	+75	1004.35	1004.65	+75	994.21	993.90
+25	1024.94	1025.25	+50	1016.36	1017.20	+50	1003.24	1003.55	+92	993.80	993.42
+50	1024.35	1024.70	+75	1015.45	1016.05	+75	1002.13	1002.45	20+00	993.64	993.25
+75	1023.70	1024.09	15+00	1014.34	1014.90	+92	1001.38	1001.71	+25	993.18	992.84
+98	1023.00	1023.43	+25	1013.23	1013.75	18+00	1001.02	1001.33	+50	992.85	992.63
13+00	1022.24	1022.71	+50	1012.12	1012.60	+25	999.91	1000.14	+75	992.63	992.60
+25	1021.43	1021.94	+75	1011.01	1011.45	+50	998.80	998.95	21+00	992.62	992.77
+50	1020.56	1021.11	15+92.55	1010.14	1010.54	+75	997.69	997.75	+25	992.87	993.12
+75	1019.65	1020.24	16+25	1008.79	1009.16	+92	996.97	996.97	+34	993.00	993.25
+98	1018.67	1019.30	+50	1007.68	1008.02	19+00	996.64	996.61	+44.37	993.16	993.41
+11.77	1018.20	1018.84	+75	1006.57	1006.88	+29.24	996.56	996.43			

Station	Offset Dist.	Elevation	Station	Offset Dist.	Elevation	Station	Offset Dist.	Elevation
0-31.25	138.50	1036.51	3+25	138.50	1033.66	7+00		1030.58
0-25		1036.46	+50		1033.46	+25		1030.36
0+00		1036.26	+75		1033.26	+50		1030.14
+25		1036.06	+100		1033.06	+75		1029.93
+50		1035.86	+125		1032.86	+100		1029.71
+75		1035.66	+150		1032.66	+125		1029.48
+100		1035.46	+175		1032.46	+150		1029.25
+125		1035.26	+200		1032.26	+175		1029.01
+150		1035.06	+225		1032.05	+200		1028.79
+175		1034.86	+250		1031.85	+225		1028.56
+200		1034.66	+275		1031.64	+250		1028.32
+225		1034.46	+300		1031.44	+275		1028.09
+250		1034.26	+325		1031.23	+300		1027.84
+275		1034.06	+350		1031.01	+325		1027.60
+300		1033.86	+375		1030.80	+350		1027.38



Station	From	To	Size	Material	Notes
I-1	1-0	10100	21"	Helical	Underdrain
	2-0	20100	21"	Helical	Underdrain
	3-0	21100	21"	Helical	Underdrain
	4-0	21100	21"	Helical	Underdrain
I-2	5-0	21100	21"	Helical	Underdrain
	6-0	21100	21"	Helical	Underdrain
I-3	7-0	21100	21"	Helical	Underdrain
	8-0	21100	21"	Helical	Underdrain
I-4	9-0	21100	21"	Helical	Underdrain
	10-0	21100	21"	Helical	Underdrain
I-5	11-0	21100	21"	Helical	Underdrain
	12-0	21100	21"	Helical	Underdrain
I-6	13-0	21100	21"	Helical	Underdrain
	14-0	21100	21"	Helical	Underdrain
I-7	15-0	21100	21"	Helical	Underdrain
	16-0	21100	21"	Helical	Underdrain
I-8	17-0	21100	21"	Helical	Underdrain
	18-0	21100	21"	Helical	Underdrain
I-9	19-0	21100	21"	Helical	Underdrain
	20-0	21100	21"	Helical	Underdrain
I-10	21-0	21100	21"	Helical	Underdrain
	22-0	21100	21"	Helical	Underdrain

MICHAEL BAKER JR., CONSULTING ENGINEERS
ROCHESTER, PENNSYLVANIA

STATE OF OHIO
DEPARTMENT OF HIGHWAYS
STATE HIGHWAY NO. 1
C-41
WILSON MILLS RD. INTERCHANGE, RAMP C
STA. 10+00 TO STA. 21+00

Designed	Drawn	Traced	Checked	Reviewed	Date	Revised
H.V.V.	J.S.H.	K.L.G.	B.P.			