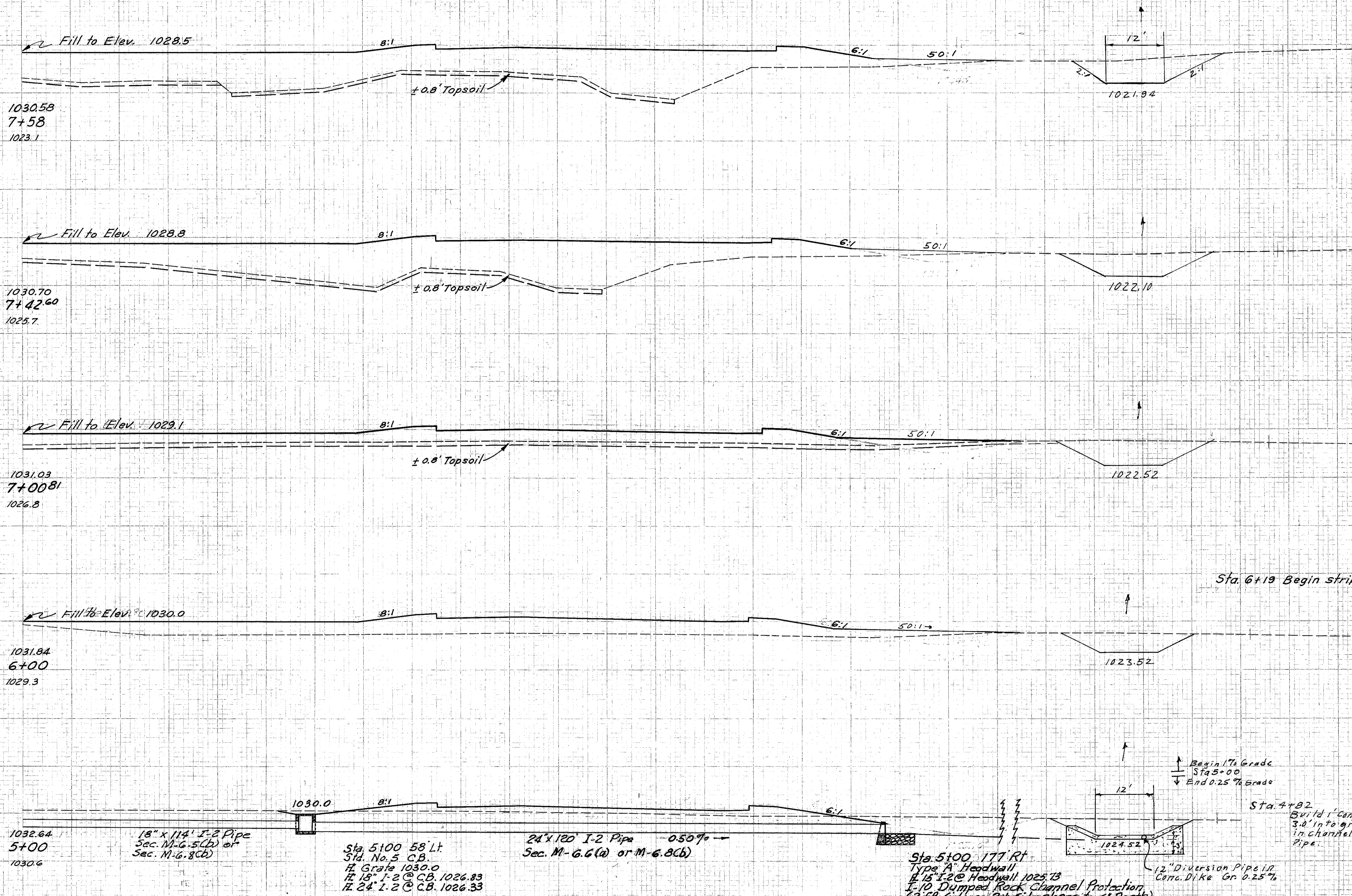


Seeding
End Width Sq. Yd.
192
328
191
892
193
2151
191
2056
179
1973

CUYAHOGA & LAKE COUNTIES
CUY-1-15.91
LAK-1-0.00



End Area	Volume	
	Cut	Fill
107	26	1165
Topsoil	58	14
97	22	1123
Topsoil	200	33
162	20	514
Topsoil	245	75
21		488
		128
48		205
		235

1030.58
7+58
1023.1

1030.70
7+42.60
1025.7

1031.03
7+00.81
1026.8

1031.84
6+00
1029.3

1032.64
5+00
1030.6

1030.0

18" x 114' I-2 Pipe
Sec. M-6.5(L) or
Sec. M-6.8(C)

Sta. 5+00 58' Lt.
Std. No. 5 C.B.
H. Grate 1030.0
H. 18" I-2 @ C.B. 1026.83
H. 24" I-2 @ C.B. 1026.33

24" x 120' I-2 Pipe
Sec. M-6.6(a) or M-6.8(C)

0.50%

Sta. 5+00 177' Rt.
Type A' Headwall
E-15' I-2 @ Headwall 1025.13
E-10' Dumped Rock Channel Protection
(2' FB & Long) 2:1 Side slopes to 6" Depth

12" Diversion Pipe in R.
Circ. Dike Gr. 0.25%

Begin 1% Grade
Sta 5+00
End 0.25% Grade

12'

1021.94

1022.10

1022.52

1023.52

1024.52

Sta. 6+19 Begin stripping Topsoil

Sta. 4+82
Build 1' Conc. Dike, 1' thick 24" wide
3.0' into ground @ Sta. 4+82
in channel. Begin 12" Diversion
Pipe.