

FED. RD. DIVISION	STATE	PROJECT
2	OHIO	I-1102 (6)

3
458

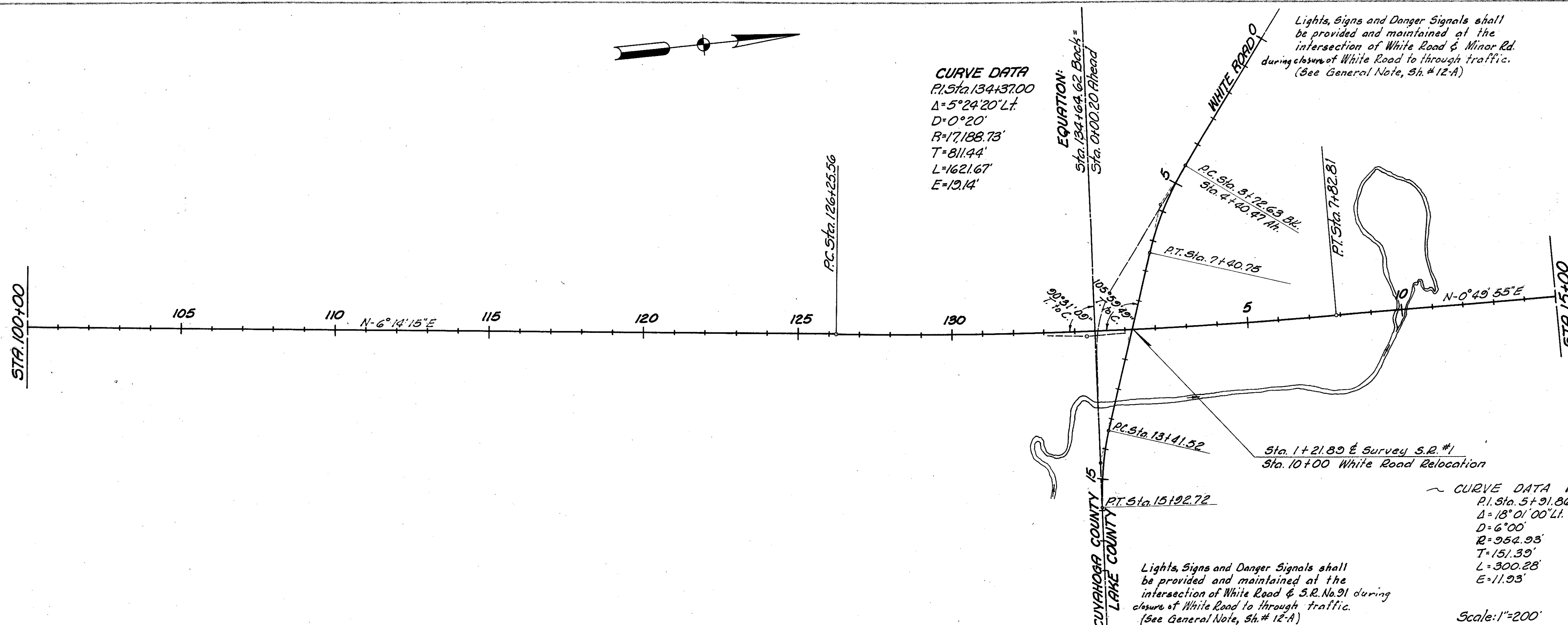
CUYAHOGA & LAKE COUNTIES
CUY-1-15.91
LAK-1-0.00

MICROFILMED
SEP 6 1985

CURVE DATA
P.I. Sta. 134+37.00
 $\Delta = 5^{\circ}24'20''$ L.I.
D = 0°20'
R = 17,188.73'
T = 811.44'
L = 1621.67'
E = 13.14'

EQUATION:
Sta. 134+64.62 Back-sight
Sta. 0+00.20 Ahead

Lights, Signs and Danger Signals shall be provided and maintained at the intersection of White Road & Minor Rd. during closure of White Road to through traffic. (See General Note, Sh. # 12-A)

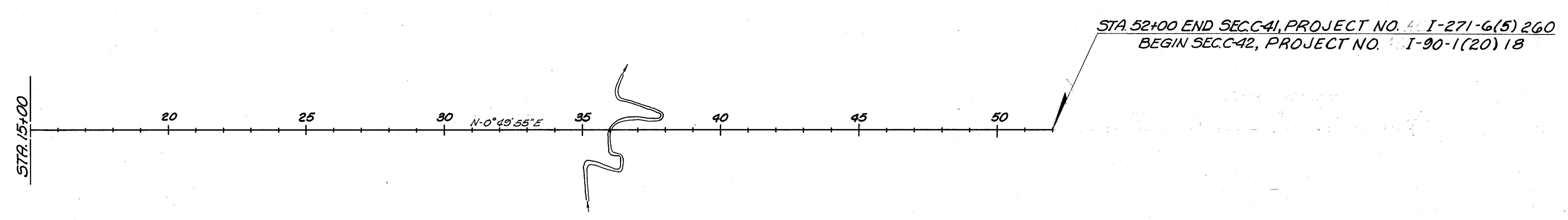
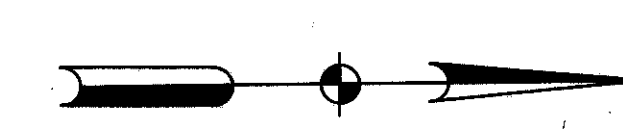


Lights, Signs and Danger Signals shall be provided and maintained at the intersection of White Road & S.R. No. 91 during closure of White Road to through traffic. (See General Note, Sh. # 12-A)

CURVE DATA WHITE ROAD RELOCATION
P.I. Sta. 5+31.86
 $\Delta = 13^{\circ}01'00''$ L.I.
D = 6°00'
R = 954.93'
T = 151.30'
L = 300.28'
E = 11.93'

P.I. Sta. 14+67.85
 $\Delta = 13^{\circ}04'20''$ L.I.
D = 6°00'
R = 954.93'
T = 126.33'
L = 251.20'
E = 8.32'

Scale: 1"=200'



STA. 52+00 END SEC. C-41, PROJECT NO. I-271-6(5) 260
BEGIN SEC. C-42, PROJECT NO. I-90-1(20) 18

Scale: 1"=200'

MICHAEL BAKER JR., CONSULTING ENGINEERS
ROCHESTER, PENNSYLVANIA

STATE OF OHIO
DEPARTMENT OF HIGHWAYS
STATE HIGHWAY NO. 1
C-41
LOCATION PLAN

Designed	Drawn	Traced	Checked	Reviewed Date	Revised
B.P.	ALH.	K.A.	REF.		