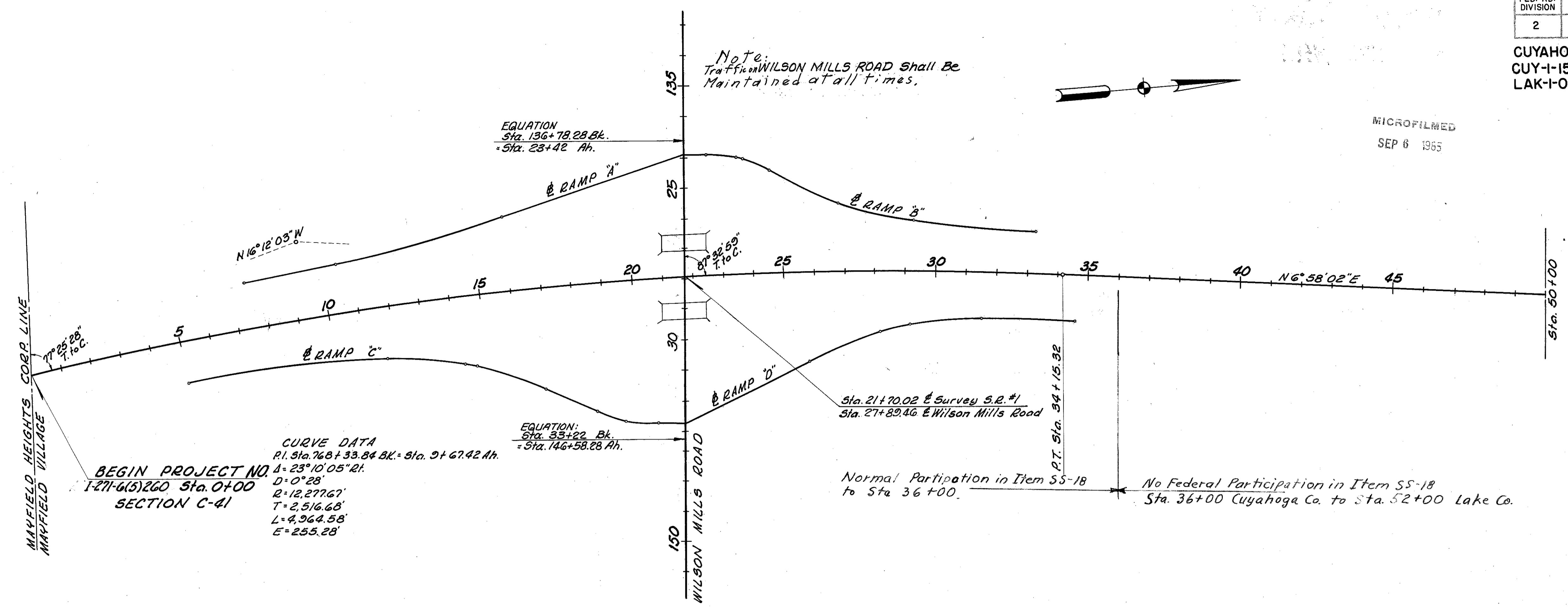


FED. RD. DIVISION	STATE	PROJECT
2	OHIO	I-1102 (6)

2
158

CUYAHOGA & LAKE COUNTIES
CUY-1-15.91
LAK-1-0.00

MICROFILMED
SEP 6 1965



Note:
Traffic on WILSON MILLS ROAD shall be
Maintained at all times.

EQUATION
Sta. 136+78.28 Bk.
Sta. 23+42 Ah.

BEGIN PROJECT NO. 1-471-6(5)260 Sta. 0+00 SECTION C-41
CURVE DATA
P.I. Sta. 768+33.84 Bk. = Sta. 9+67.42 Ah.
Δ = 23° 10' 05\"/>

EQUATION:
Sta. 33+22 Bk.
Sta. 146+58.28 Ah.

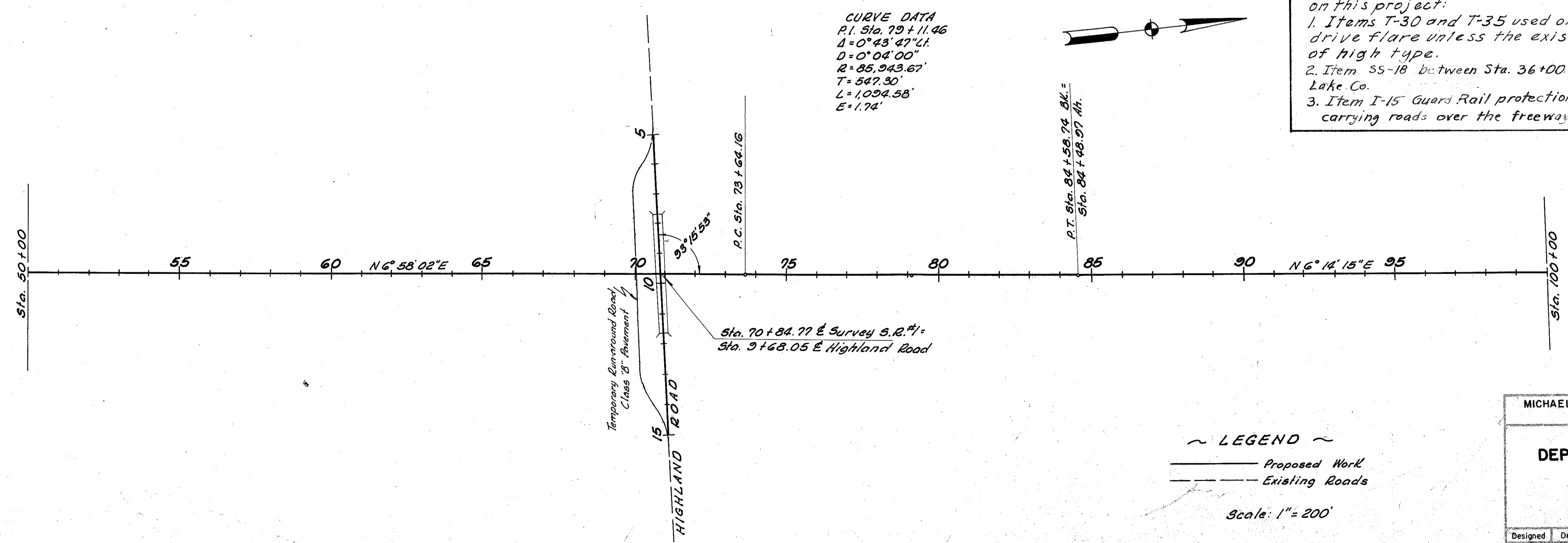
Sta. 21+70.02 E Survey S.R.#1
Sta. 27+89.46 E Wilson Mills Road

Normal Participation in Item 55-18
to Sta 36+00.

No Federal Participation in Item 55-18
Sta. 36+00 Cuyahoga Co. to Sta. 52+00 Lake Co.

Federal Funds will not participate in the following on this project:

1. Items T-30 and T-35 used on drives beyond the drive flare unless the existing drive surface is of high type.
2. Item 55-18 between Sta. 36+00 Cuyahoga Co. and Sta. 52+00 Lake Co.
3. Item I-15 Guard Rail protection for median piers under structures carrying roads over the freeway.



CURVE DATA
P.I. Sta. 79+11.46
Δ = 0° 43' 47\"/>

Sta. 70+84.77 E Survey S.R.#1 =
Sta. 9+68.05 E Highland Road

~ LEGEND ~
— Proposed Work
--- Existing Roads
Scale: 1" = 200'

MICHAEL BAKER JR., CONSULTING ENGINEERS ROCHESTER, PENNSYLVANIA					
STATE OF OHIO DEPARTMENT OF HIGHWAYS STATE HIGHWAY NO. 1 C-41 LOCATION PLAN					
Designed	Drawn	Traced	Checked	Reviewed Date	Revision
B.P.	A.L.H.	K.A.	REF.	11-15-65	REC.