

SECTION A-A
LOCAL DEPRESSION FOR INLET REBUILT

GRATE AND FRAME SHALL BE OF THE SAME TYPE AS THOSE USED IN "DETAIL A - SINGLE INLET" SHEET NO. 23. CASTINGS SHALL MEET THE REQUIREMENTS OF ITEM 604. THE DESIGN SHALL BE ESSENTIALLY THE SAME AND EQUALLY AS STRONG AS THOSE HEREON.

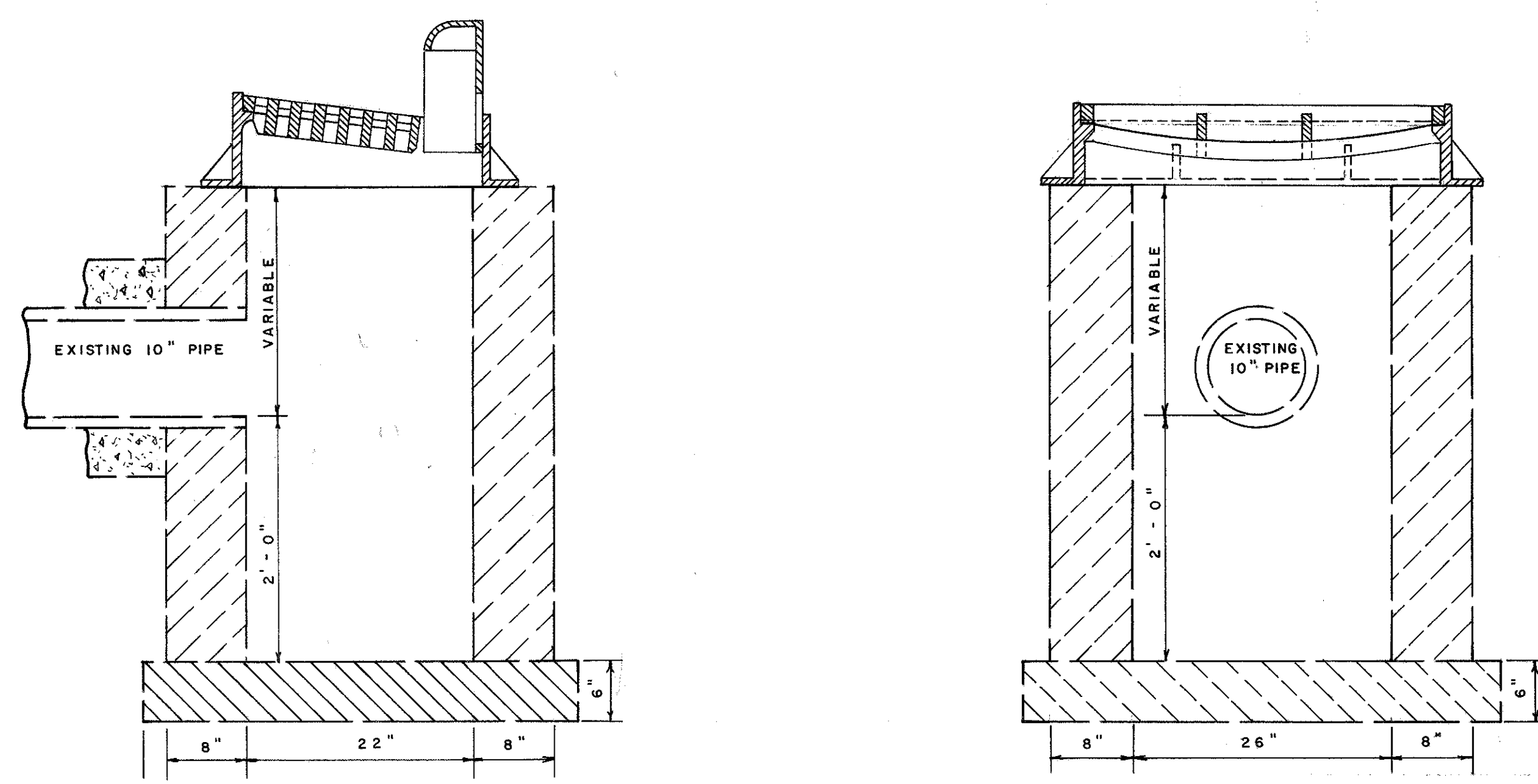
WEIGHTS, MINIMUM

CURB CASTING	100 POUNDS
GUTTER GRATE	200 POUNDS
GUTTER FRAME	300 POUNDS

BEARING AREAS OF FRAME AND GRATE SHALL BE SO FITTED AND FINISHED AS TO PROVIDE A FIRM AND EVEN SEAT FOR ALL PORTIONS OF THE GRATE IN THE FRAME. NO PROJECTIONS SHALL EXIST ON BEARING AREAS OF EITHER CASTING AND THE GRATE SHALL SIT IN ITS FRAME WITHOUT ROCKING. FRAME AND GRATE SHALL BE FITTED, MATCHED AND MARKED BEFORE DELIVERY TO THE PROJECT.

THE BASE OF THE FRAME SHALL BE SET IN A FULL BED OF PORTLAND CEMENT MORTAR, AND SO ADJUSTED TO CONFORM WITH THE FINISHED PAVEMENT GRADE.

PAVEMENT: THE PORTION OF PAVEMENT REMOVED DURING CONSTRUCTION SHALL BE REPLACED WITH AN EQUIVALENT AMOUNT OF ITEM 305, PORTLAND CEMENT CONCRETE BASE AND SHALL BE INCLUDED IN UNIT PRICE BID FOR ITEM 604, "INLET REBUILT-DETAIL D".



DETAIL D - INLET REBUILT
PROVIDING LOCAL DEPRESSION