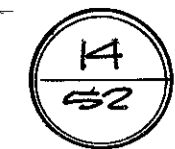


FORD LEASING DEVELOPMENT CO.  
VOL. 652 PG. 535

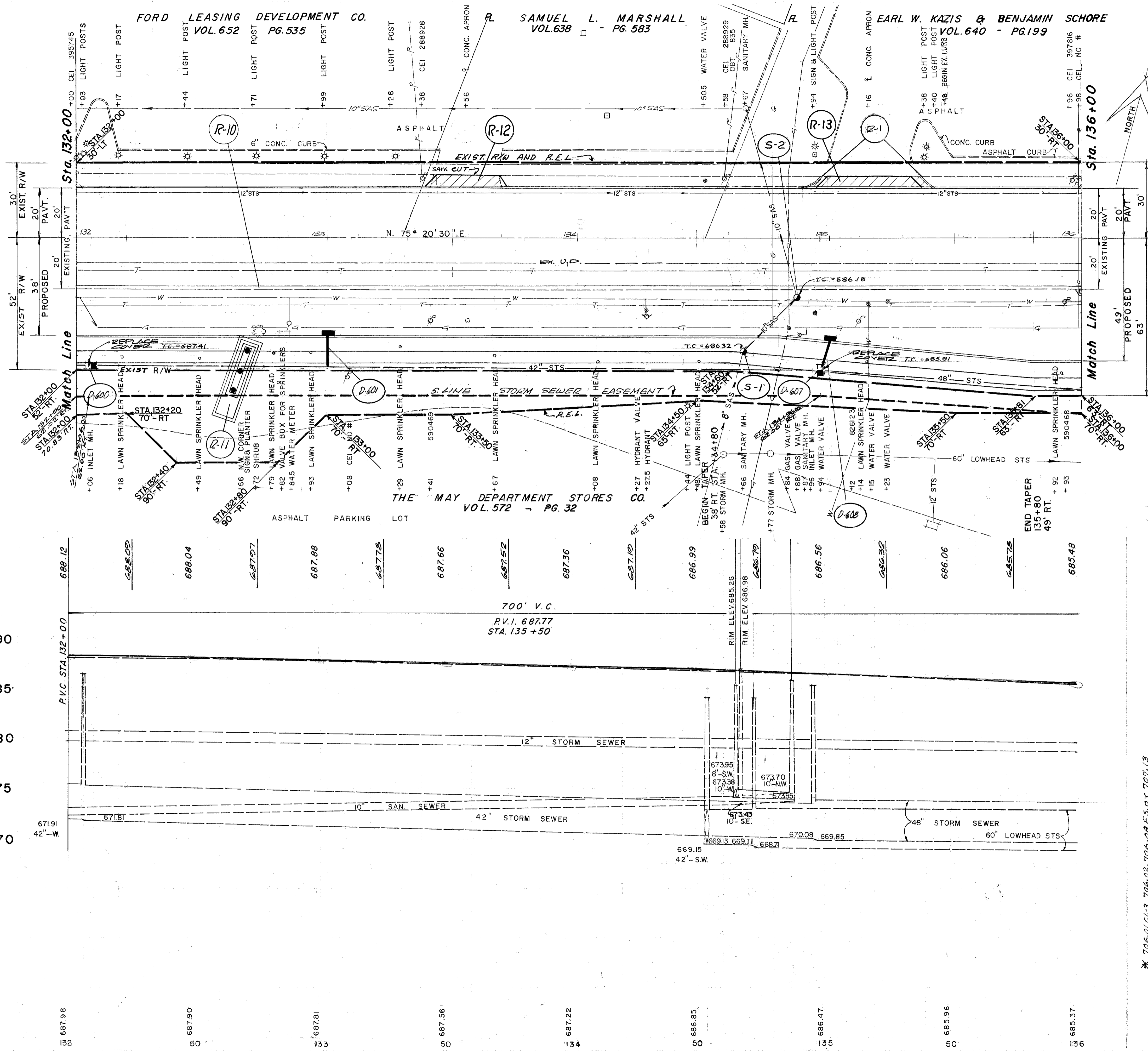
SAMUEL L. MARSHALL  
VOL. 638 PG. 583

EARL W. KAZIS & BENJAMIN SCHORE  
VOL. 640 - PG. 199

FED. RD DIVISION	STATE	PROJECT
5	OHIO	



LAKE COUNTY  
LAK-20-792  
ISSUE 1



SANITARY SEWERS		604 MANHOLE ADJ. TO GRADE EACH
REF.	LOCATION	
S-1	134+66 - 45' RT.	1
S-2	134+87 - 23' RT.	1
TOTAL		2

FOR DRIVE DETAILS SEE SHEET No.27  
FOR INLET DETAIL SEE SHEET No.23-24

ROADWAY		2 0 2			
REF.	LOCATION	S.Y.	L.F.	LUMP	L.T.
R-1	134+80 TO 135+42				16
R-10	132+00 TO 136+00		400		
R-11	132+61 - 56' RT.			LUMP	
R-12	133+56 - LT.	15			
R-13	135+16 - LT.	27			
TOTAL		42	400	LUMP	16

DRAINAGE		6 0 3		6 0 4	
REF.	LOCATION	L.F.	EA.	EA.	
D-600	132+06 - 50' RT.				
D-601	133+00 - 37' TO 52' RT.	18			
D-602	134+27.5 - 31' RT.				
D-603	134+87 - 23' RT.				
D-607	134+96 - 52' RT.				
D-608	134+96 TO 135+00 - 39' RT.	13			
TOTAL		18	13	2	2

QUANTITY CALCULATIONS  
BY NSS DATE 11/3/72  
CHKD: JEP DATE 11/10/72

DEBEVEC, SALO & ASSOCIATES, INC.