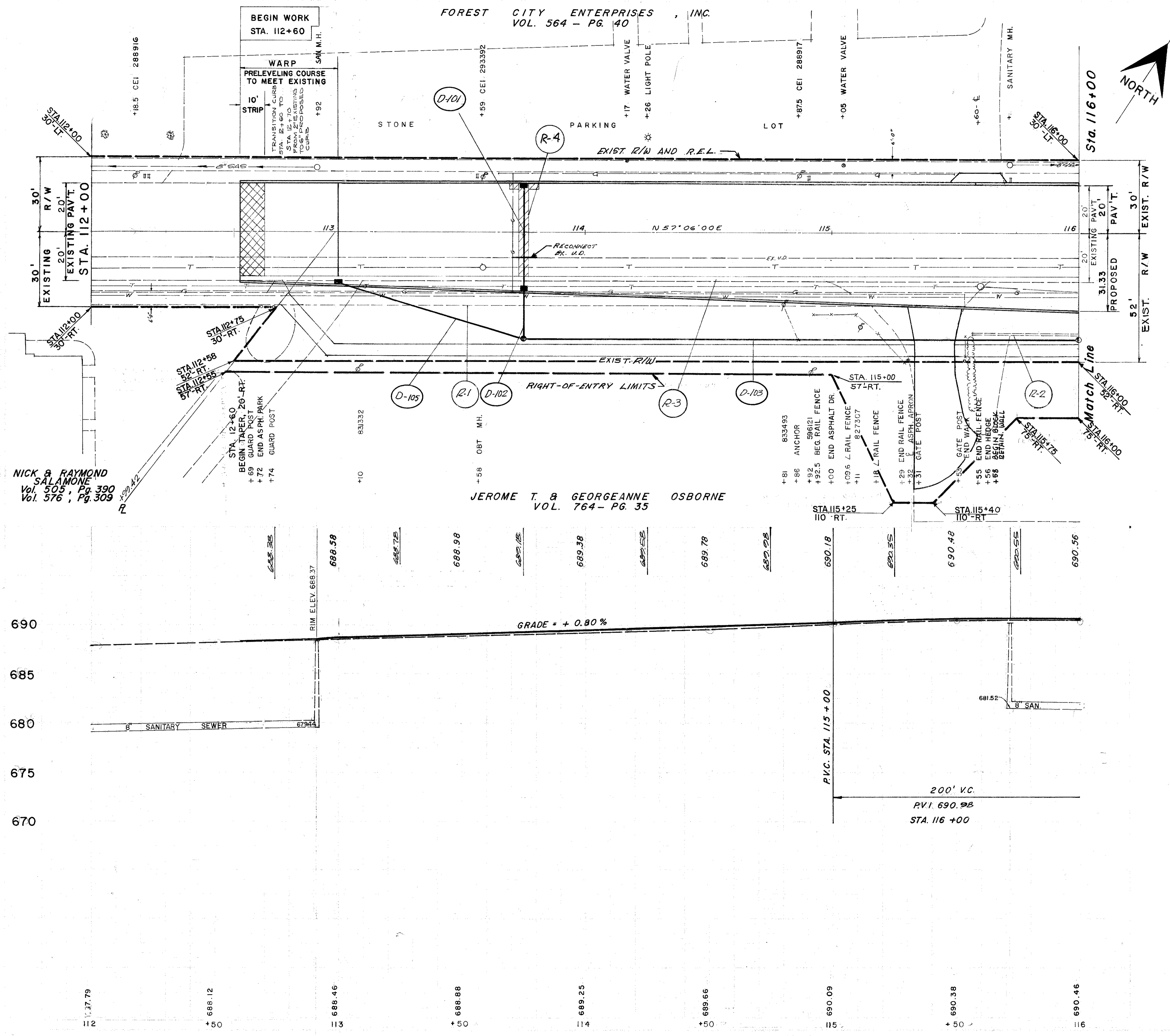


FED. RD. DIVISION	STATE	PROJECT
5	OHIO	



LAKE COUNTY
LAK-20-7.92
ISSUE 1

FOREST CITY ENTERPRISES, INC.
VOL. 564 - PG. 40



RIGHT - OF - ENTRY LIMITS

WILL BE EXPRESSED AS R.E.L.
ON SUBSEQUENT SHEETS

ROADWAY		202		305	
REF.	LOCATION	L.F.	LUMP	S.F.	S.Y.
R-1	112+76 TO 115+53 - 42' RT.			1385	
R-2	115+58 TO 116+00 - 28' RT.		LUMP		
R-3	112+60 TO 116+00 - RT.	340			
R-4	113+75			23	23
TOTAL		340	LUMP	1385	23

FOR DRIVE STA. 115+42 SEE SHT. No. 27
FOR INLETS & M.H. DETAILS SEE SHT. No. 23-24

* 706.01CL-3, 706.02, 706.08E.S. OR 707.13

DRAINAGE		603		604		605	
REF.	LOCATION	L.F.	L.F.	L.F.	EA.	EA.	L.F.
D-101	113+75 - 19' LT. to 43' RT.	62				1	10
D-102	113+75 - 23' RT. to 43' RT.		20				
D-103	113+75 to 116+00 - 43' RT.			225			
D-105	113+00 to 113+75 - 20' RT. to 43' RT.		78		1		
TOTAL		62	98	225	2	1	10

QUANTITY CALCULATIONS
BY D.S.S. DATE 11/3/72
CHKD. J.P.P. DATE 11/10/72

NICK & RAYMOND
SALAMONE
Vol. 505, Pg. 390
Vol. 576, Pg. 309

JEROME T. & GEORGEANNE OSBORNE
VOL. 764 - PG. 35

DEBEVEC, SALO & ASSOCIATES, INC.