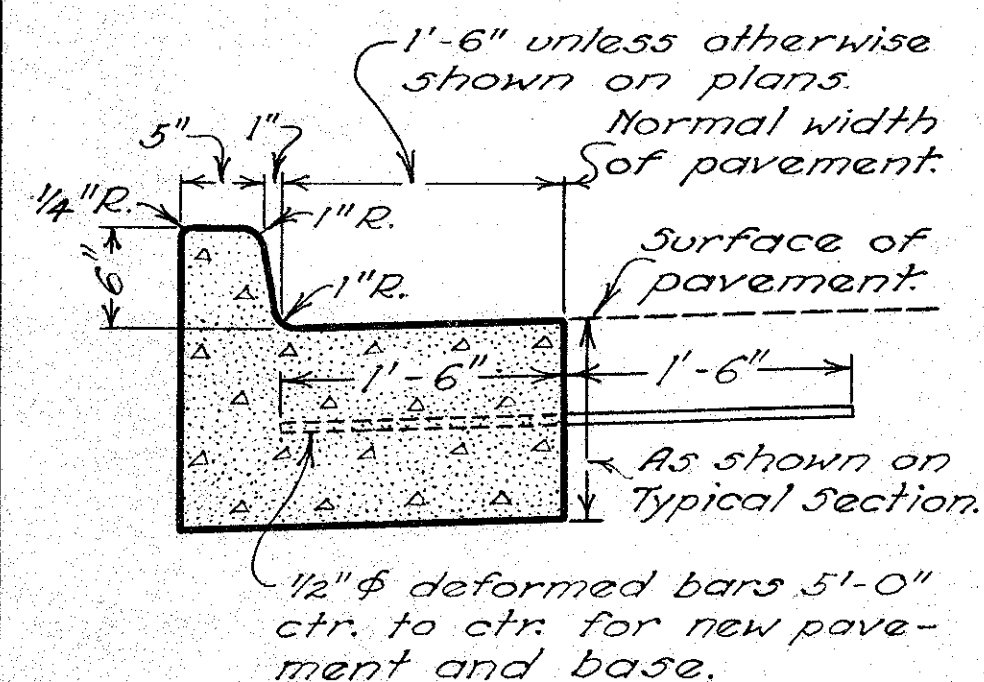
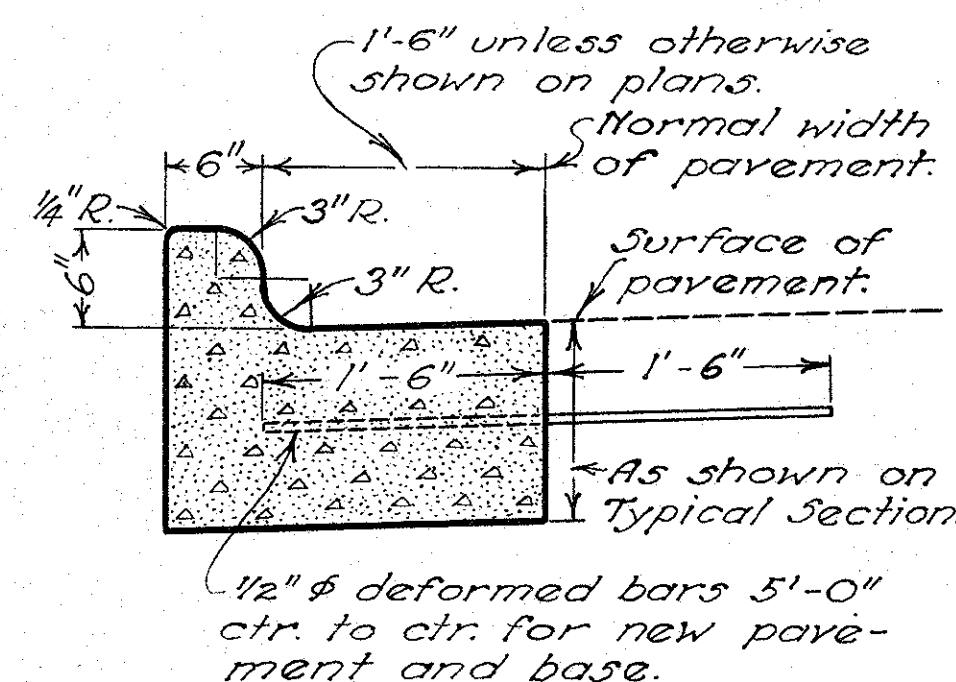


STANDARD CONCRETE CURBS AND COMBINED CURB AND GUTTER

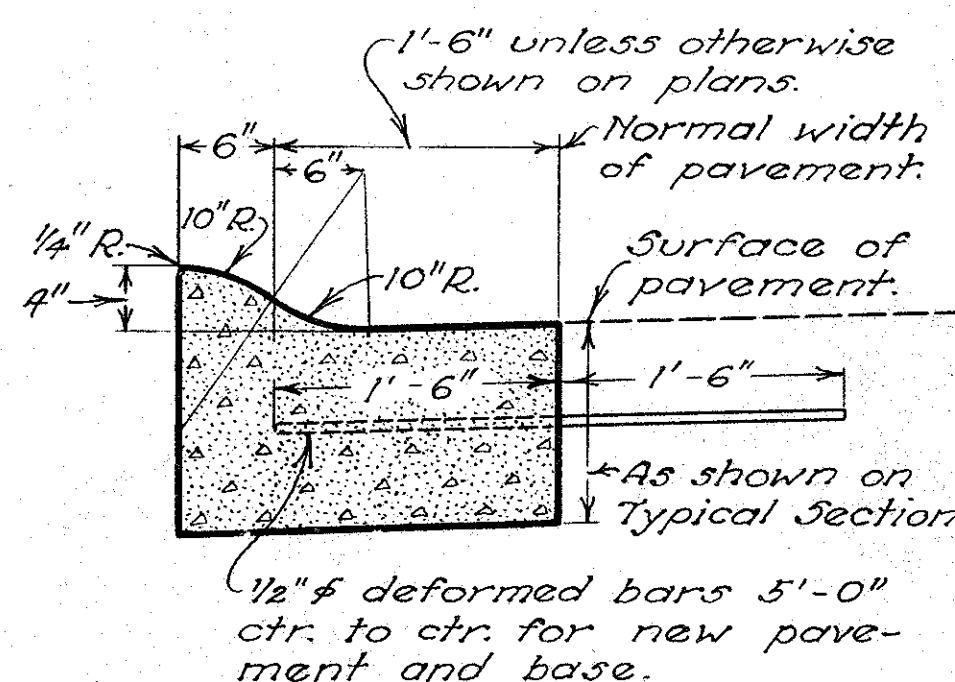
TYPE 1



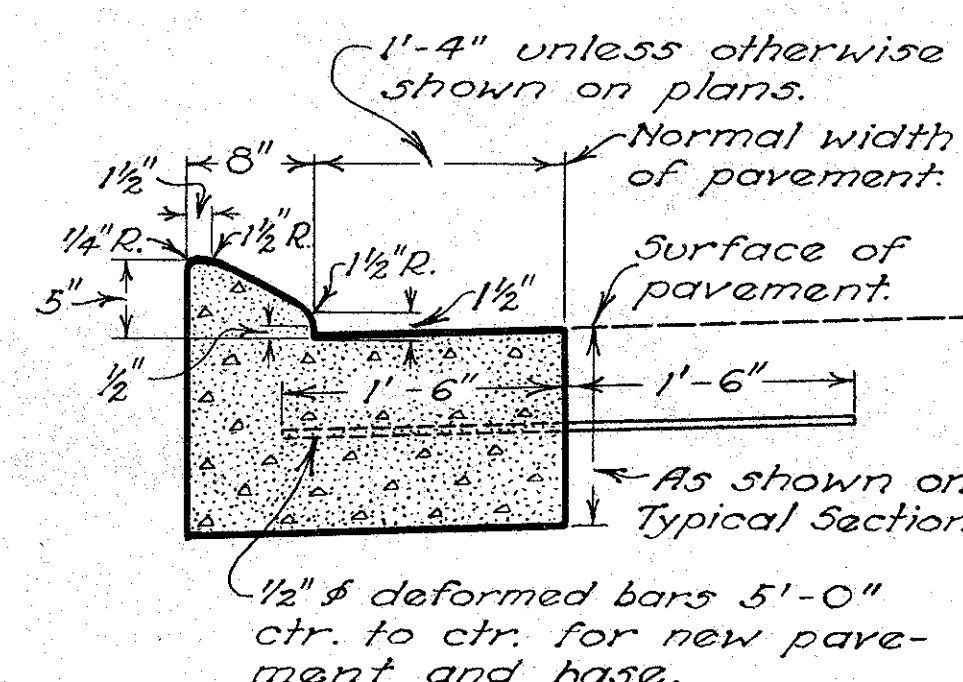
TYPE 2



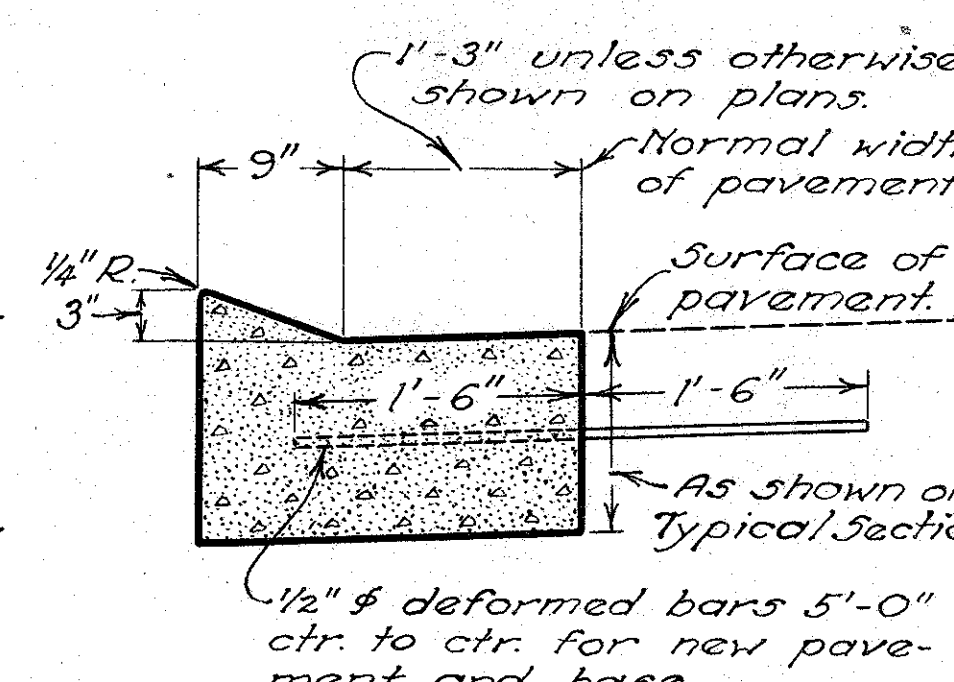
TYPE 3



TYPE 4



TYPE 5



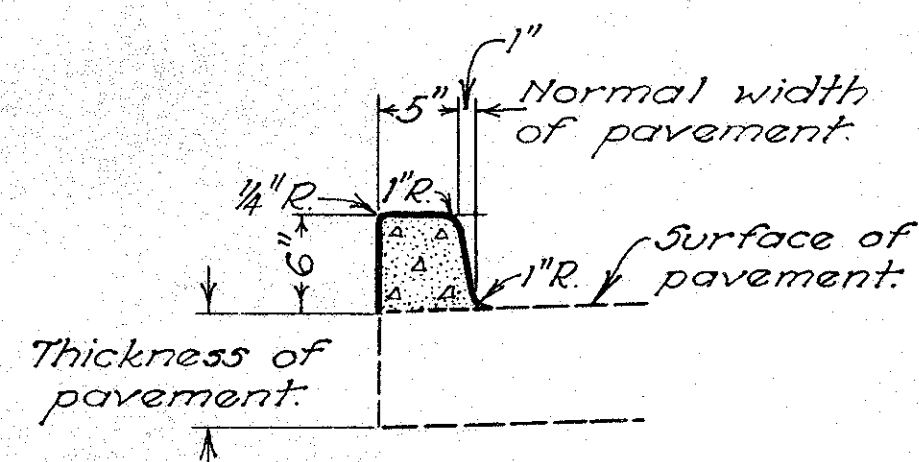
NOTES

GENERAL:—
This drawing shows alternate types of curb that may be used on various types of pavement. Typical section of project shows the type to be used, also the thickness of the edge of the pavement or the edge of the curb and gutter section.

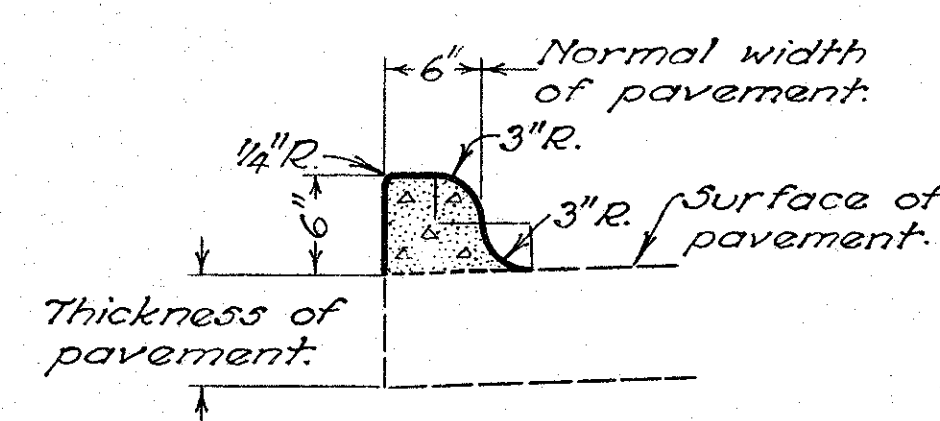
JOINTS:—
Curbs built integral with pavement or base shall have transverse joints constructed and spaced at the same intervals as in the pavement or base.
Curbs not built integral with pavement or base shall have transverse joints constructed at intervals of five (5) feet with a transverse expansion joint constructed at intervals of thirty (30) feet. All contraction joints to be poured.

DESIGN:—
Types 1, 2, 3, 4 or 5, combined curbs and gutters, may be used when the width or half-width between curbs is more than the standard widths of finishing machine, with the variation in width of pavement being taken up in the variable width of the gutter. These types may be used with ANY type of pavement, whether of one, two or three course construction.
Types 1-A, 2-A, 3-A, 4-A and 5-A are for use with concrete pavements of normal widths.
Types 1-B, 2-B, 3-B, 4-B and 5-B are for use with concrete bases of normal widths.
Types 6-A or 6-B curbs may be used when the width or half-width construction between curbs can be constructed with finishing machine of a standard width.

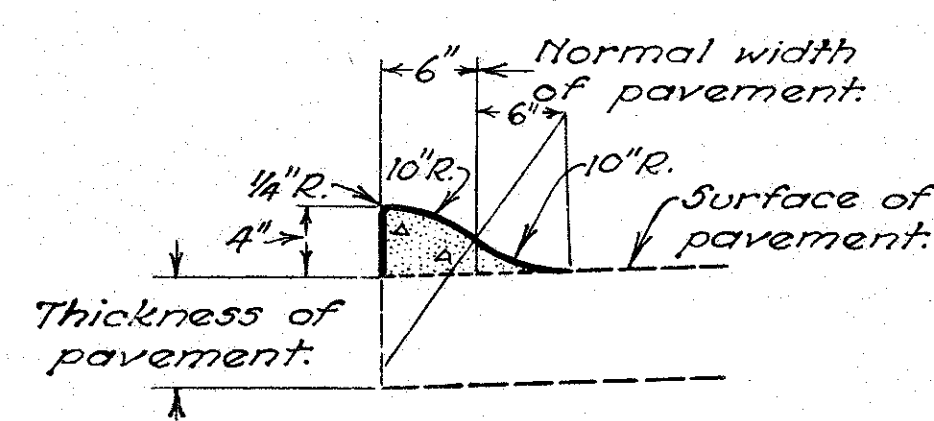
TYPE 1-A



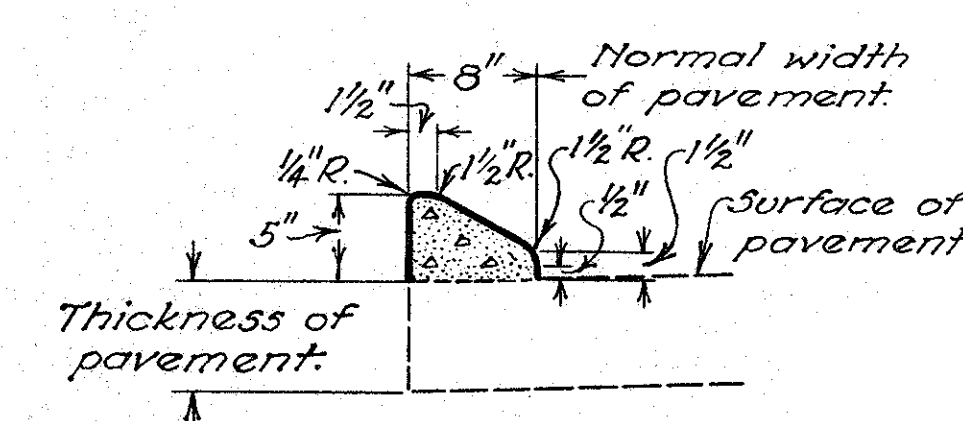
TYPE 2-A



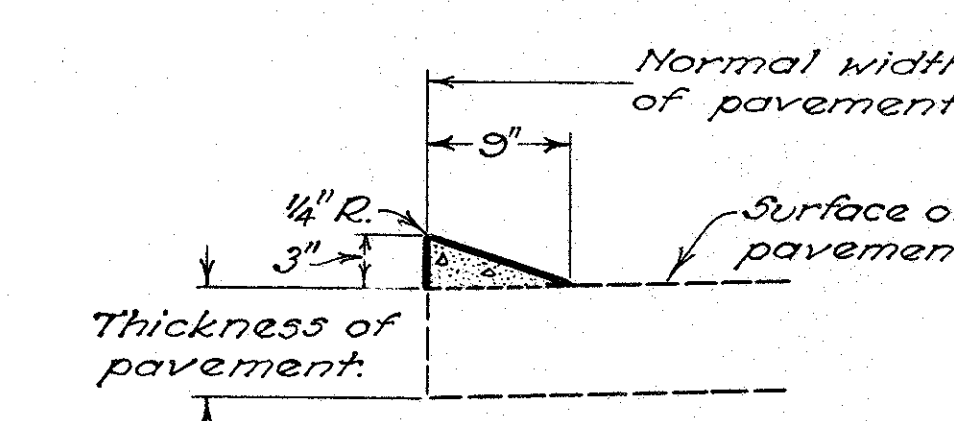
TYPE 3-A



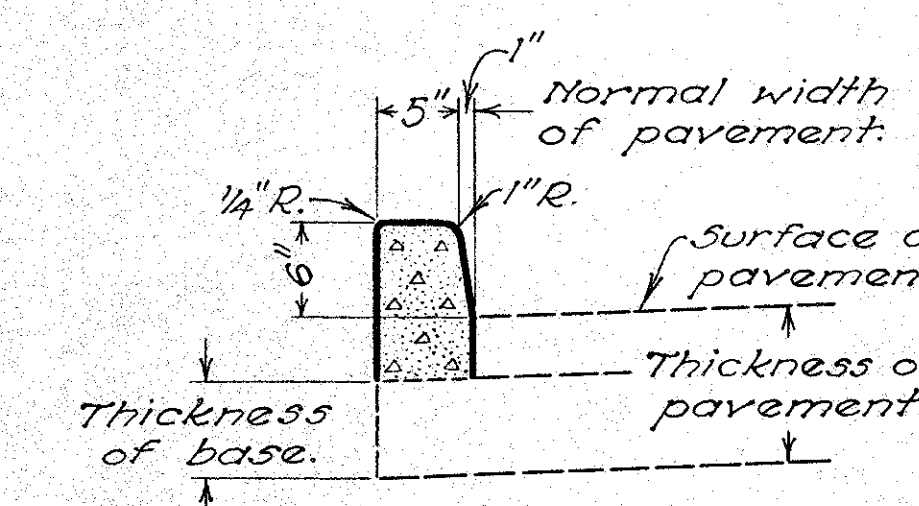
TYPE 4-A



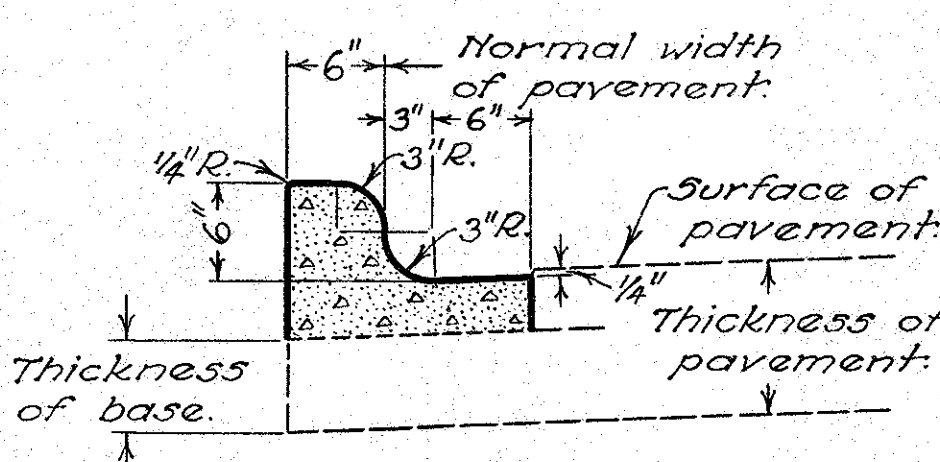
TYPE 5-A



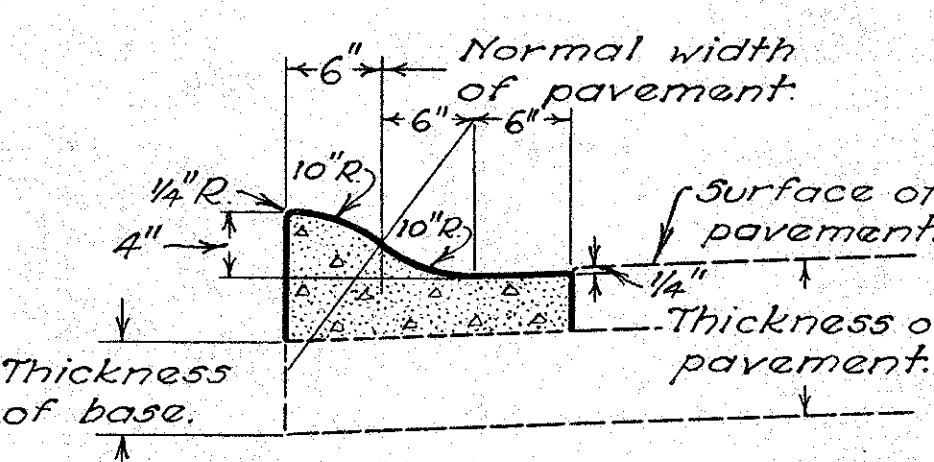
TYPE 1-B



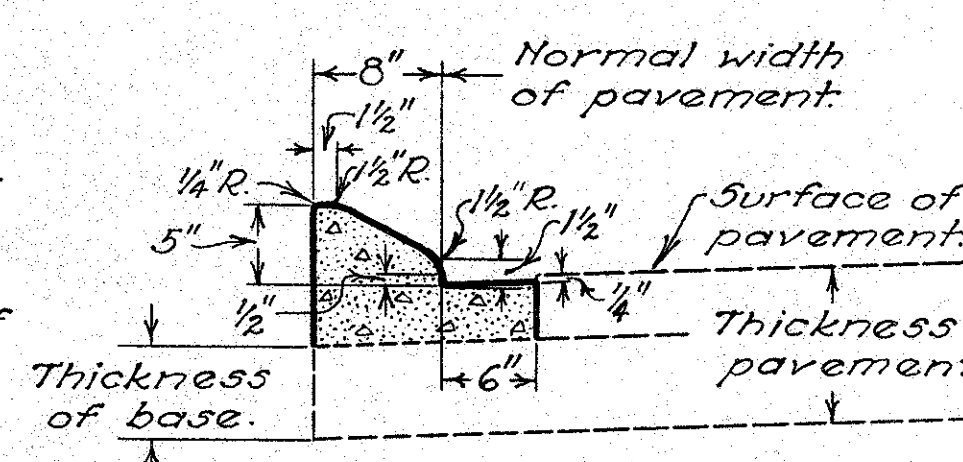
TYPE 2-B



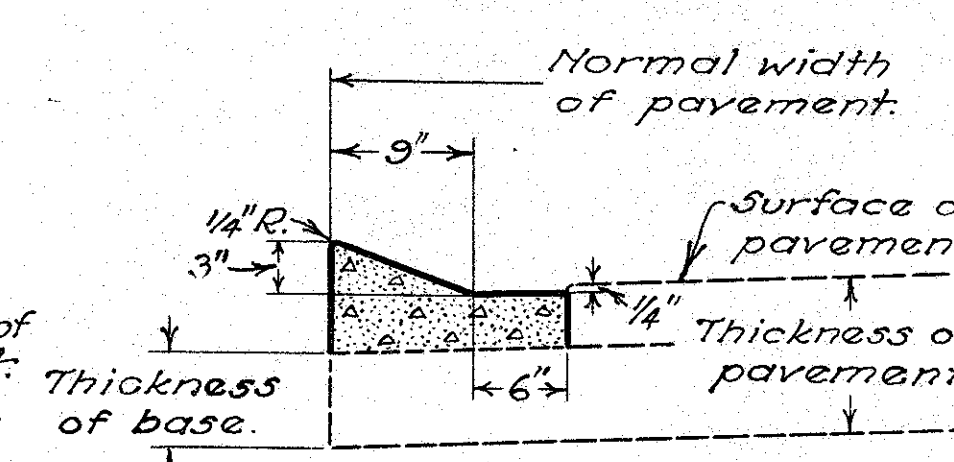
TYPE 3-B



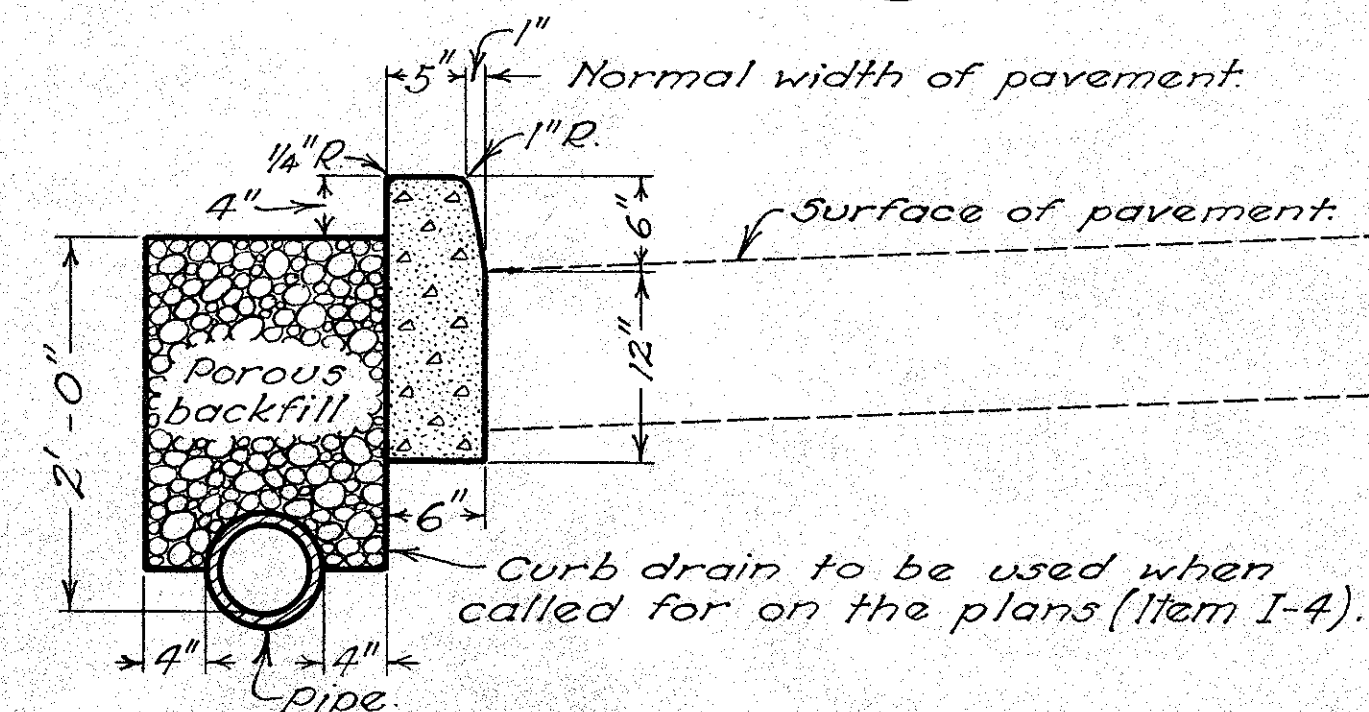
TYPE 4-B



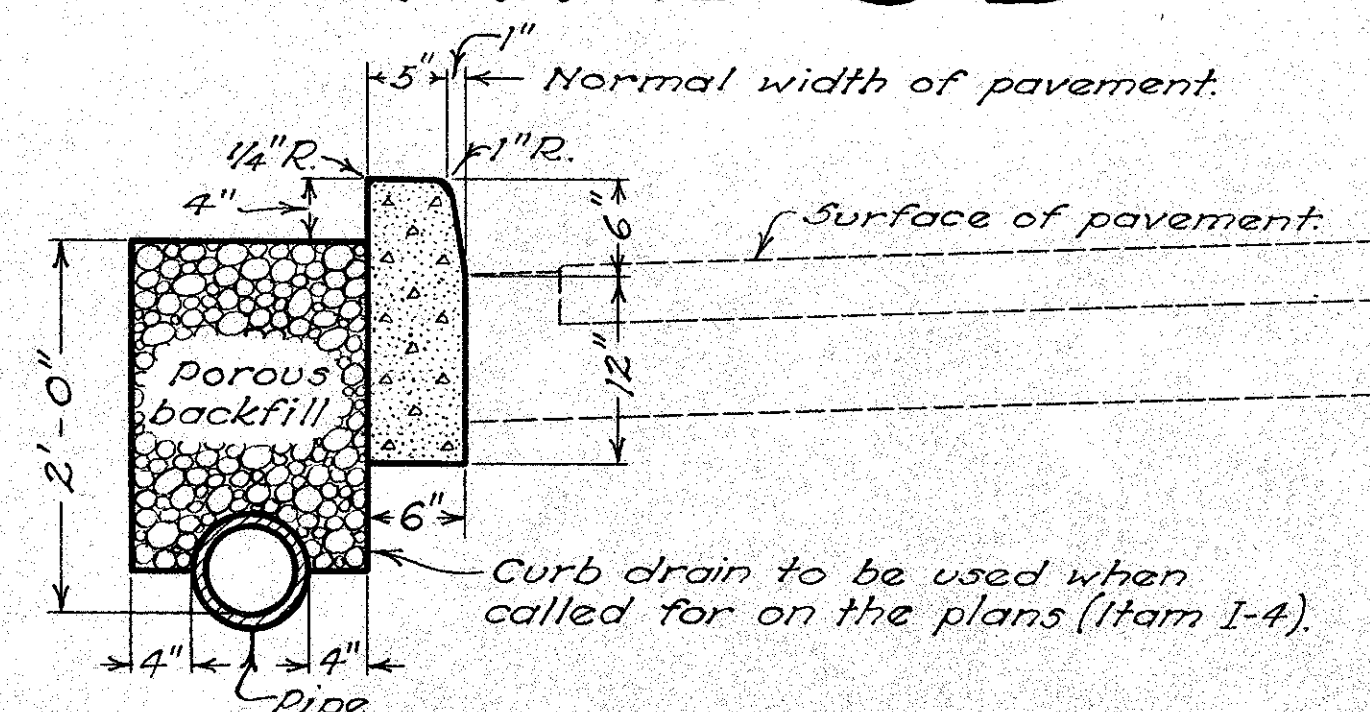
TYPE 5-B



TYPE 6-A



TYPE 6-B



BUREAU OF LOCATION & DESIGN
OHIO DEPARTMENT OF HIGHWAYS
7-10-35
2-15-36

**CONCRETE CURBS
AND COMBINED
CURB AND GUTTER**

STANDARD
CONSTRUCTION
DRAWING
I-12

APPROVED *K.L.P.* CHIEF ENGINEER