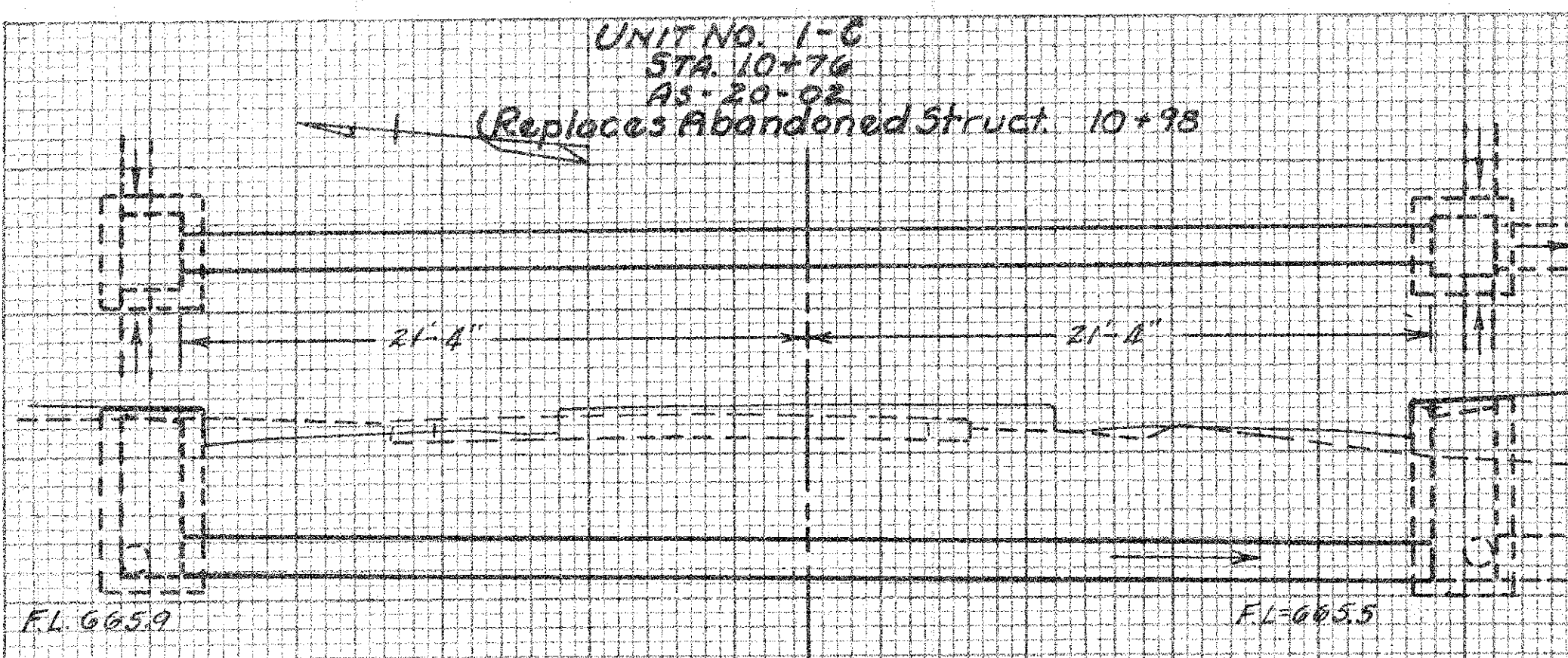
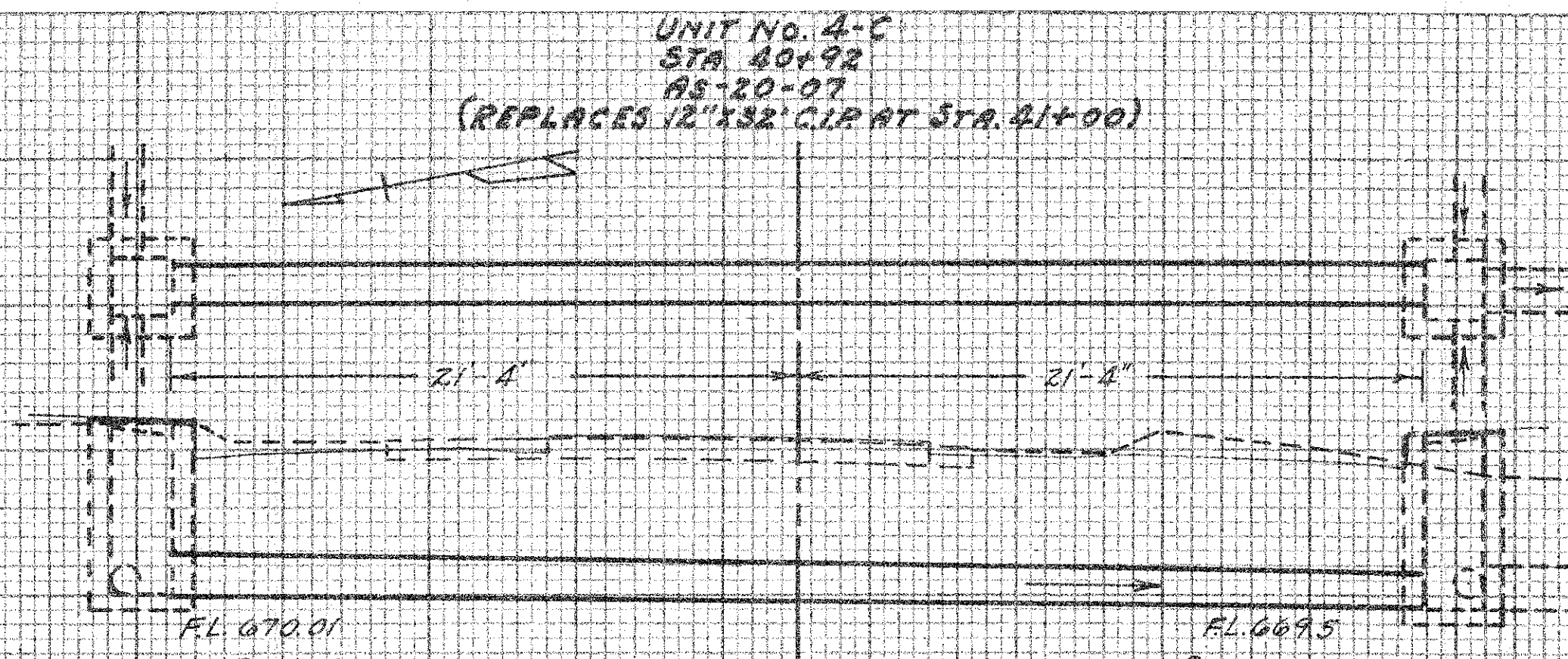


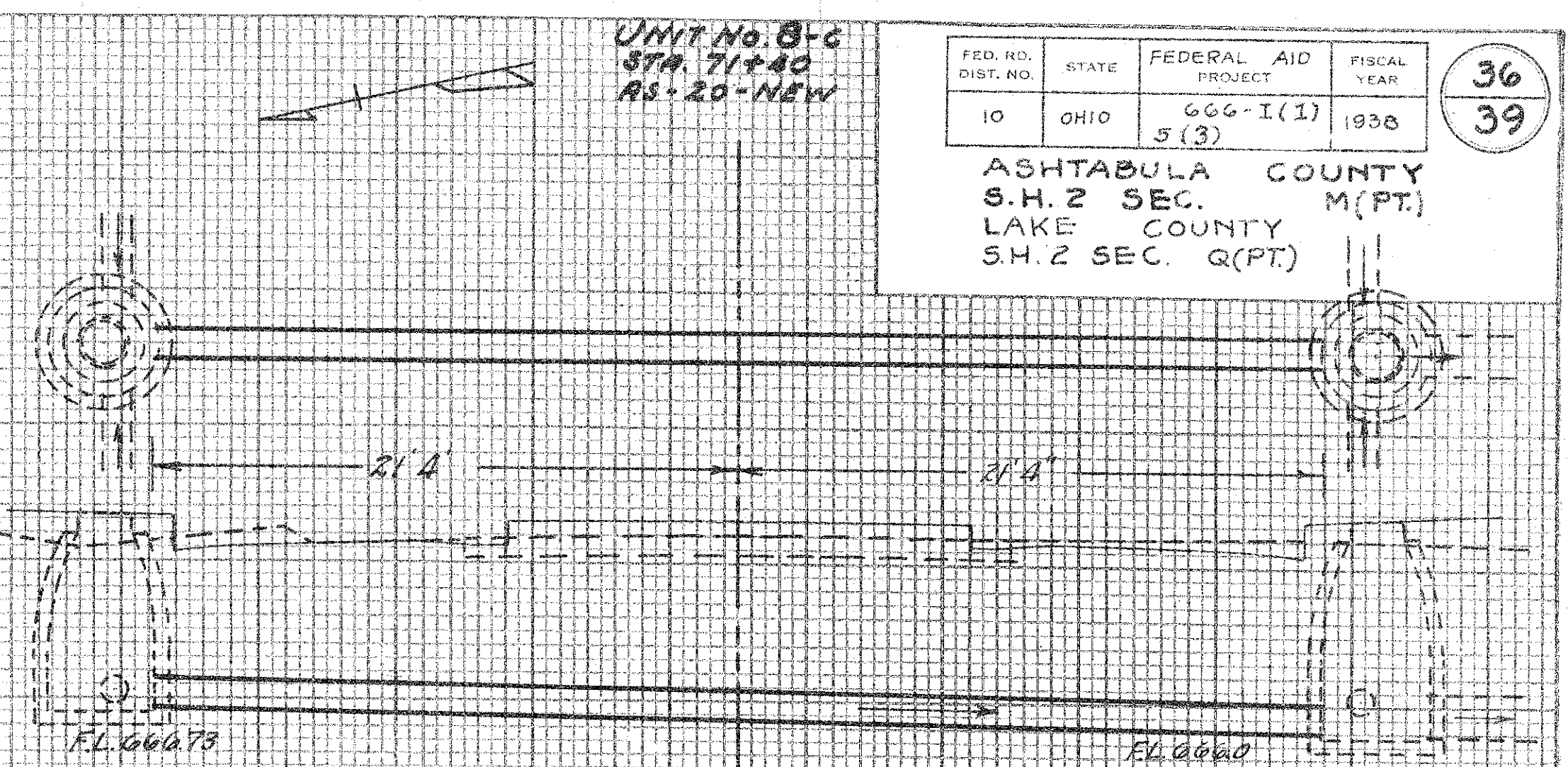
ASHTABULA COUNTY
S.H. 2 SEC. M(PT.)
LAKE COUNTY
S.H. 2 SEC. Q(PT.)



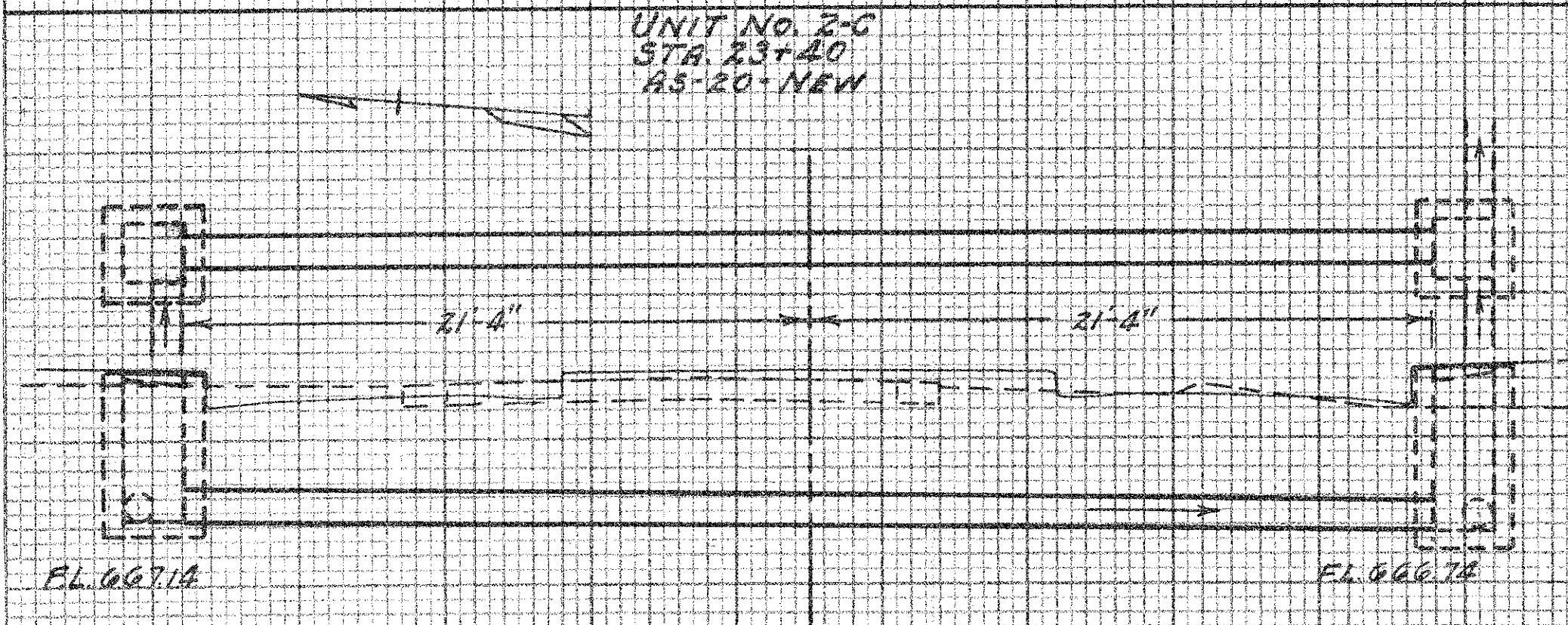
CULVERT DATA		ESTIMATED QUANTITIES	
Type	Pipe Cross-over	Excavation	28 C.Y.
Size	15" x 42'-8"	Removal of portion of exist masonry	0.0 C.Y.
Work Required:	Remove existing headwall, plug and abandon Cul. at Sta. 10+98. Build new 15" x 42 7/8" pipe Culvert. Std. Dr. 5-27 PC 2-3	Plug existing 12" pipe Cul. (1-5 1/2')	0.1 C.Y.
		15" pipe for Culvert	42 7/8 L.F.



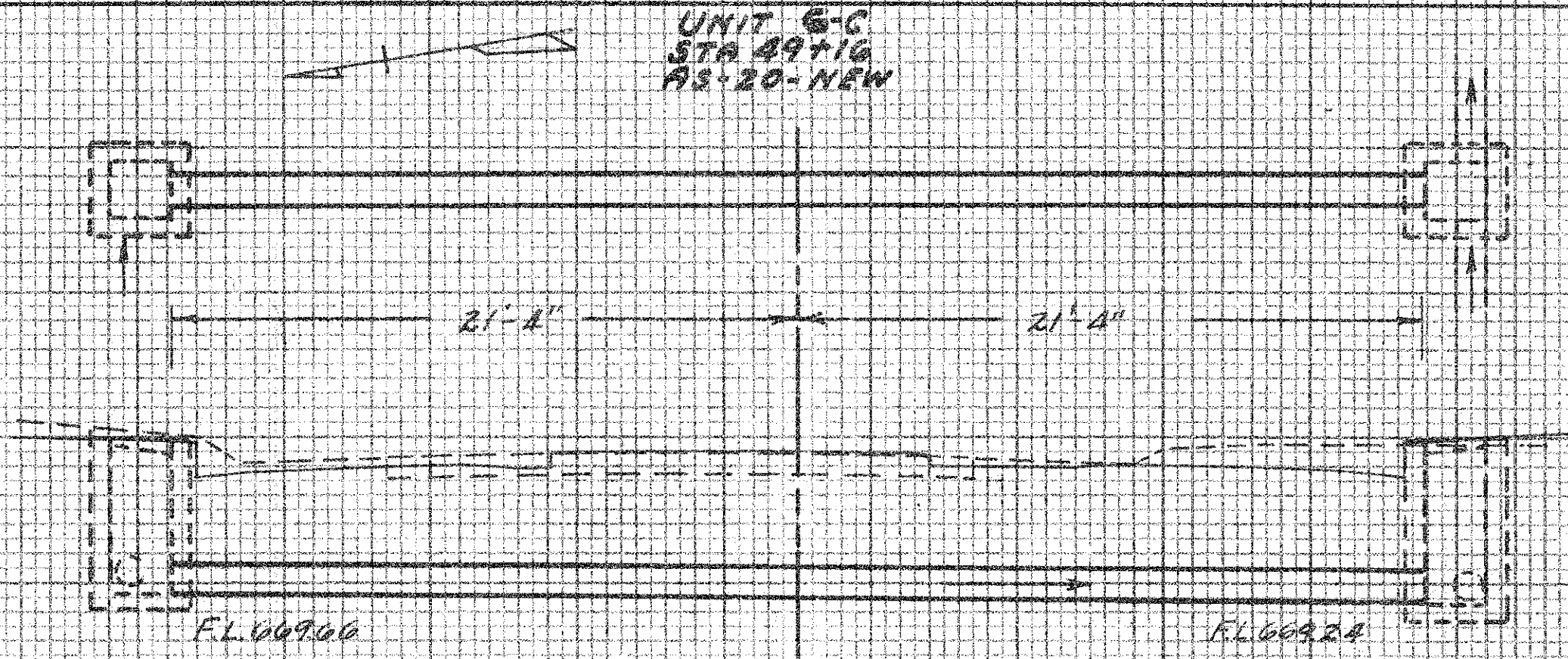
CULVERT DATA		ESTIMATED QUANTITIES	
Type	Pipe Cross-over	Excavation	30 C.Y.
Size	15" x 42'-8"	Removal of portion of existing masonry	0.4 C.Y.
Work Required:	Build new 15" x 42 7/8" pipe Culvert. Std. Dr. 5-27 PC 2-3. Remove top of existing headwall (41+00) plug and abandon 12" CIP Culvert at Sta. 41+00 (AS-20-07)	Plug existing CIP with conc. (1-5 1/2')	0.1 C.Y.
		15" pipe for Culvert	42 7/8 L.F.



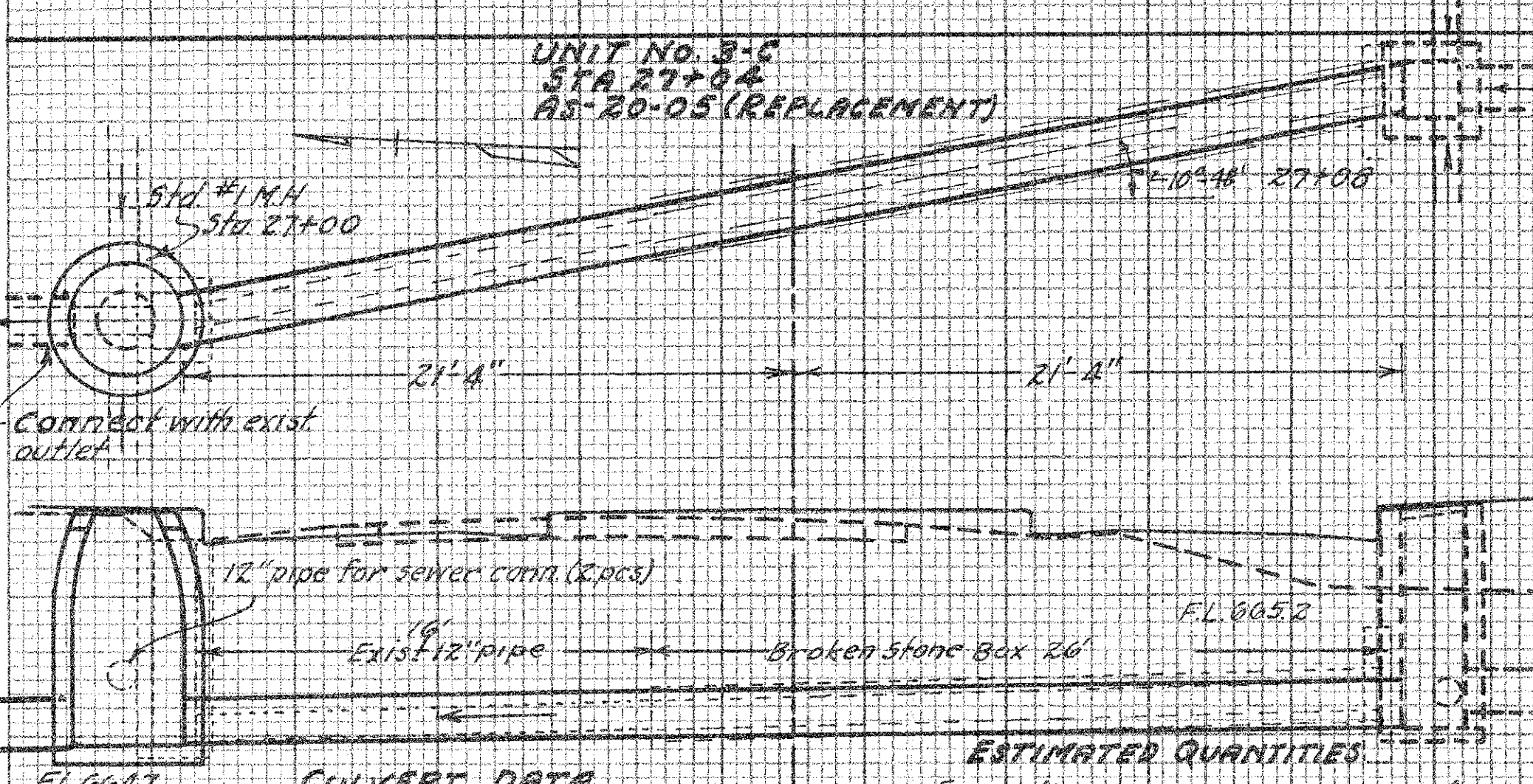
CULVERT DATA		ESTIMATED QUANTITIES	
Type	Pipe Cross-over	Excavation	36 C.Y.
Size	15" x 42'-8"	15" pipe for Culvert	42 7/8 L.F.
Work Required:	Build new 15" x 42 7/8" pipe culvert. Std. Dr. 5-27 PC 2-3		



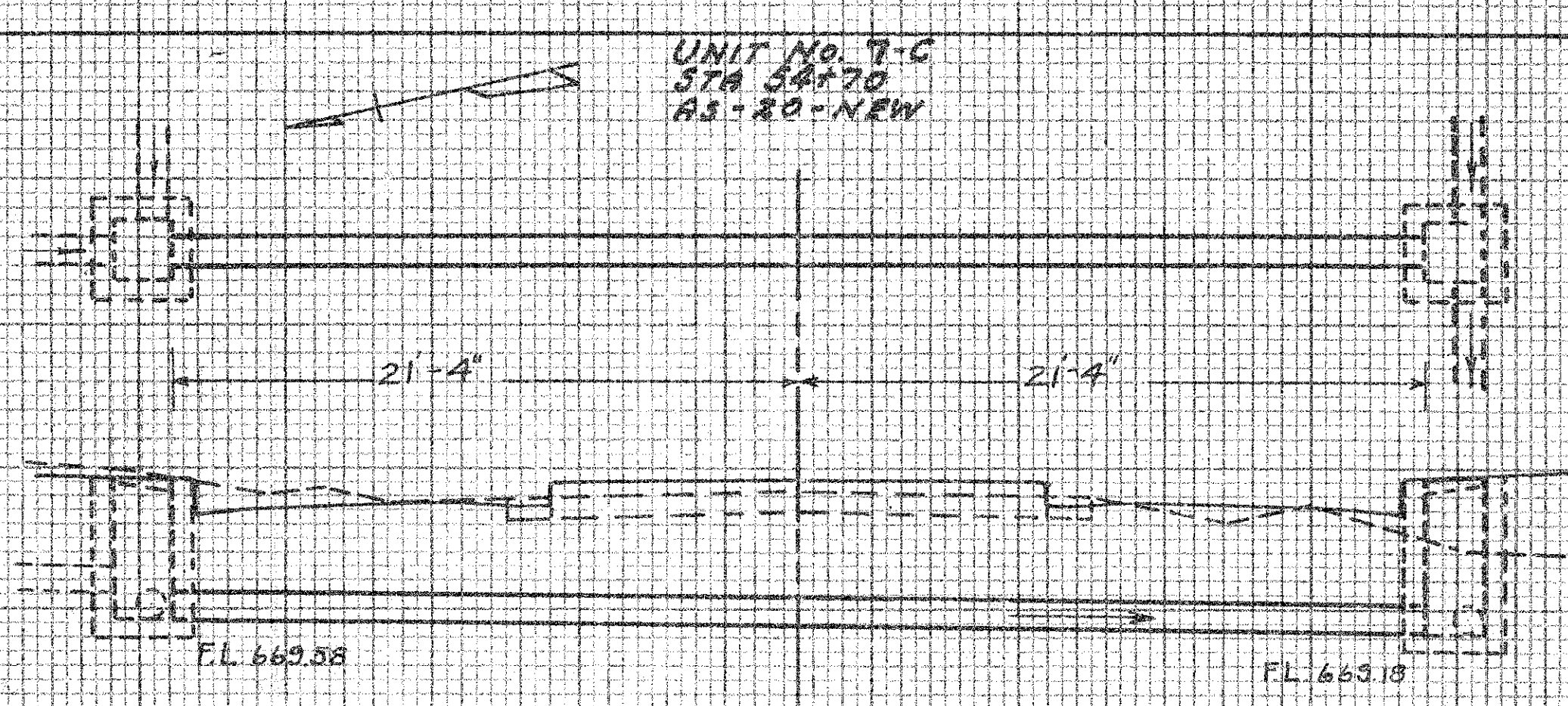
CULVERT DATA		ESTIMATED QUANTITIES	
Type	Pipe Cross-over	Excavation	26 C.Y.
Size	15" x 42'-8"	15" pipe for Culvert	42 7/8 L.F.
Work Required:	Build new 15" x 42 7/8" pipe Culvert. Std. Dr. 5-27 PC 2-3		



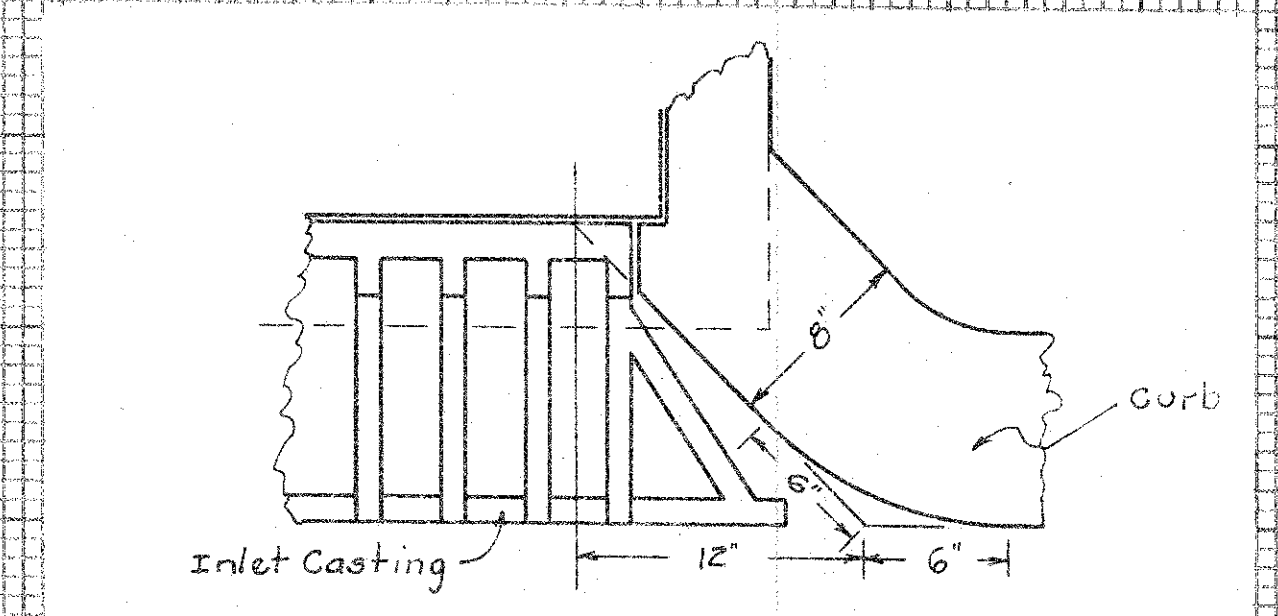
CULVERT DATA		ESTIMATED QUANTITIES	
Type	Pipe Cross-over	Excavation	33 Cu. Yds.
Size	15" x 42'-8"	15" Pipe for Culvert	42 7/8 Lin. Ft.
Work Required:	Build new 15" x 42 7/8" pipe Culvert. Std. Dr. 5-27 PC 2-3		



CULVERT DATA		ESTIMATED QUANTITIES	
Type	Pipe Cross-over	Excavation	40 C.Y.
Size	21" x 43'-5"	Removal of portion of exist masonry	0.0 C.Y.
Work Required:	Remove existing structure and inlet. Build new 21" x 43'-5" pipe Cul. Std. Dr. 5-27-PC 2-3	12" pipe removed & stored	16.0 L.F.
		No. 1 Std. M.H. complete	1 Ea.
		21" pipe for culvert	43.4 L.F.
		12" pipe for sewer conn.	4.0 L.F.
		Note: 12" pipe removed and stored shall be stored on 1/4" RW at the disposal of the State forces.	



CULVERT DATA		ESTIMATED QUANTITIES	
Type	Pipe	Excavation	24 Cu. Yds.
Size	15" x 42'-8"	15" Pipe for Culvert	42 7/8 Lin. Ft.
Work Required:	Build new 15" x 42 7/8" pipe Culvert. Std. Dr. 5-27 PC 2-3		



DETAIL OF PART OF STANDARD NO. 2 & NO. 4 INLETS SHOWING DEVIATIONS FROM THE STANDARD CONSTRUCTION DRAWINGS WHICH APPLY TO THIS PROJECT

