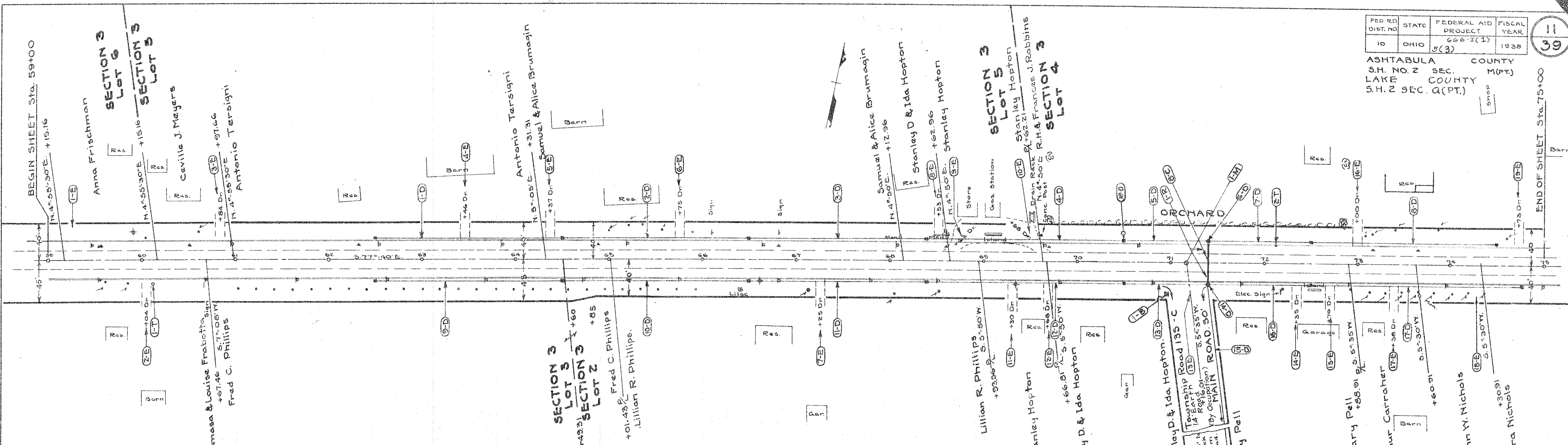


FINAL SURVEY  
NO. 1000  
DATE

ORIGINAL SURVEY  
NO. 1000  
DATE



**TREE REMOVAL**

Item No.	Station	Rt.	Size
1-E	59+25	L	2.0
2-E	60+04	R	4.0
3-E	60+84	L	3.0
4-E	63+46	L	2.0
5-E	64+37	L	2.0
6-E	65+75	L	3.0
7-E	67+25	R	4.0
8-E	68+53	L	2.0
9-E	68+62 Dbl	L	6.0
11-E	69+30	R	2.0
10-E	69+58 Dbl	L	6.0
12-E	69+68	R	3.0
13-E	71+16	R	12.0
14-E	72+35	R	2.0
15-E	72+79	R	2.0
16-E	73+00	L	2.0
17-E	73+38	R	2.0
18-E	74+27	R	2.0
19-E	74+73	L	2.0

Total = 6

**PRIVATE DRIVE & ROAD APPR.**

Item No.	Station	Rt.	Agg.
1-E	59+25	L	2.0
2-E	60+04	R	4.0
3-E	60+84	L	3.0
4-E	63+46	L	2.0
5-E	64+37	L	2.0
6-E	65+75	L	3.0
7-E	67+25	R	4.0
8-E	68+53	L	2.0
9-E	68+62 Dbl	L	6.0
11-E	69+30	R	2.0
10-E	69+58 Dbl	L	6.0
12-E	69+68	R	3.0
13-E	71+16	R	12.0
14-E	72+35	R	2.0
15-E	72+79	R	2.0
16-E	73+00	L	2.0
17-E	73+38	R	2.0
18-E	74+27	R	2.0
19-E	74+73	L	2.0

Total = 630

**STORM SEWER**

Item No.	Station	Rt.	Pipe	Lin. Ft.	M.H. No.	Conc. No.	Remarks
1-D	62+51	L	12"	198			C. Inlet L. Sta. 62+50
2-D	64+51	L	12"	198			C. Inlet L. Sta. 64+50
3-D	66+51	L	12"	186			C. Inlet L. Sta. 66+50
4-D	68+39	L	12"	210			C. Inlet L. Sta. 68+38
5-D	70+51	L	12"	87			C. Inlet L. Sta. 70+50
6-D	M.H.						No. 1 M.H. 71+40
7-D	71+42	L	12"	107			C. Inlet L. Sta. 71+40
8-D	72+51	L	12"	198			C. Inlet L. Sta. 72+50
9-D	62+51	L	12"	198			C. Inlet R. Sta. 62+50
10-D	64+51	L	12"	198			C. Inlet R. Sta. 64+50
11-D	66+51	L	12"	186			C. Inlet R. Sta. 66+50
12-D	68+39	L	12"	210			C. Inlet R. Sta. 68+38
13-D	70+51	L	12"	87			C. Inlet R. Sta. 70+50
14-D	M.H.						No. 2 M.H. 71+40
15-D	M.H. Outlet			300		1.0	See Profile this sheet
16-D	71+42	L	12"	107			C. Inlet R. Sta. 71+40
17-D	72+51	L	12"	224			C. Inlet R. Sta. 72+50
Total				2394	300	14	2

**STRUCTURES 20' SPAN & UNDER**

Unit No.	Station	Old Work	New Work	Detailed Dr.	Culvert
		Type	Type	No.	No.
B-C	71+40	None	Pipe	36	New

**CONCRETE SIDEWALK (Lt.)**

Sta 59+00 to 75+00 - 1600 Lin. Ft. Net.  
12 Drives @ 20' = 240' x 4' = 960 Sq. Ft. 6" Walk.  
Deduction for Inlets & Manhole  
7' x 2' @ 5.00' = 35.0 Sq. Ft.  
1' x 1' M.H. 3.00' = 3.0 " "  
Total Deduct. 38.0 Sq. Ft.  
(1600-240)x4' = 5402 Sq. Ft. Walk.

**TRENCH REINFORCING**

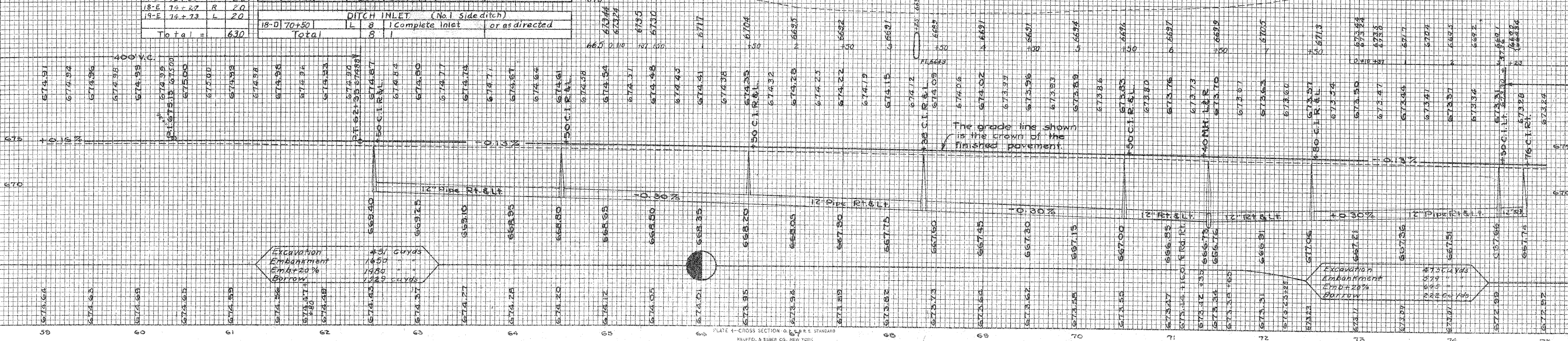
Item No.	Station	No. Bars	Size	Length	Weight
1-R	71+40	44	3/8"	18'	827
Total = 827 Lbs.					

**MONUMENT BOX & BENCH MARK ASSEMBLY**

Item No.	Station	Side	Mon. Box	Bench Mk.
1-B	71+00	RT.		
1-M	71+1601	R		
Total				

**STORM SEWER OUTLET (71+40)**

Item No.	Station	Side	Mon. Box	Bench Mk.
1-B	71+00	RT.		
1-M	71+1601	R		
Total				



Excavation Embankment  
Borrow  
45' Cuyds  
1050  
1950  
1229 Cuyds

Excavation Embankment  
Borrow  
473.54 yds  
279  
643  
222.64 yds