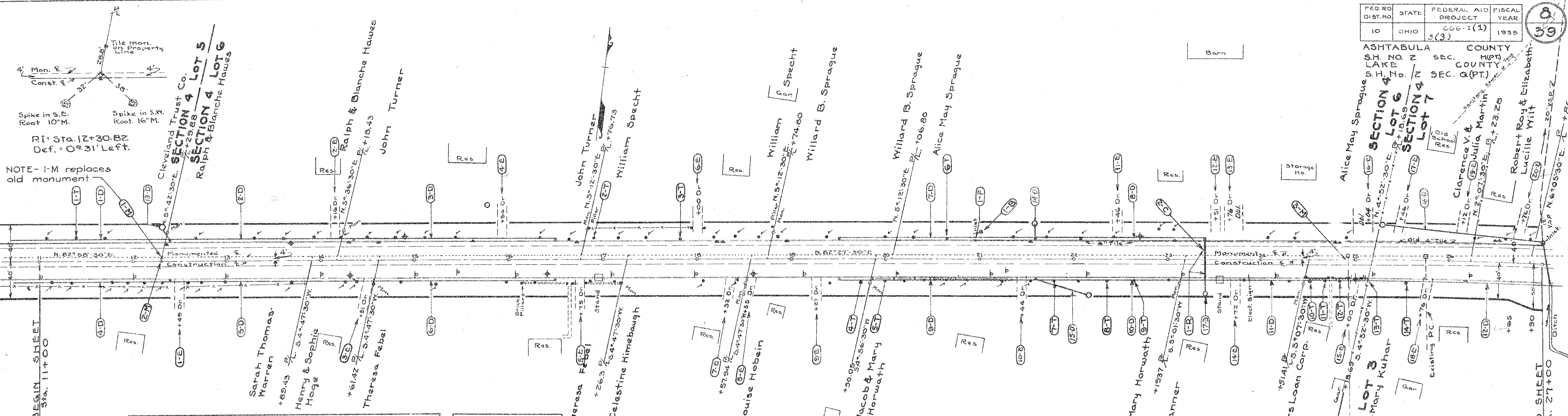


FED. DIST. NO.	STATE	FEDERAL AID PROJECT	FISCAL YEAR
10	OHIO	666-1(1)	1938

ASHTABULA COUNTY  
S.H. NO. 2 SEC. 2 (MCH)  
LAKE COUNTY  
S.H. No. 2 SEC. 9 (PT.)

Alice May Sprague SECTION 4 LOT 6  
Home Owners Loan Corp. SECTION 4 LOT 2  
T. J. & M. Kuhar SECTION 4 LOT 3  
Clarence V. & Julia Martin SECTION 4 LOT 7  
Robert Roy & Elizabeth Lucille Wilt



### TREE REMOVAL

Item No.	Station	Ref.	Size
1-T	11+39	Lt.	24"
2-T	16+91	Lt.	30"
3-T	17+82	Lt.	54"
4-T	19+73	Rt.	9"
5-T	19+98	Rt.	9"
6-T	20+66	Lt.	38"
7-T	21+79	Rt.	10"
8-T	22+35	Rt.	9"
9-T	22+65	Rt.	10"
10-T	24+51	Rt.	9"
11-T	24+67	Rt.	9"
12-T	24+83	Rt.	9"
13-T	25+10	Rt.	8"
14-T	25+53	Rt.	9"
<b>Total</b>			<b>14</b>

### STORM SEWER

Item No.	Station	From	To	R.	L.	Pipe Lin. Ft.	1-8-1	Remarks
1-D	11+00	12+39	L	138				Curb Inlet Lt. Sta. 12+39
2-D	12+40	14+34	L	194				Curb Inlet Lt. Sta. 14+34
3-D	14+36	16+48	L	212				Curb Inlet Lt. Sta. 16+48
4-D	11+00	12+38	R	138				Curb Inlet Rt. Sta. 12+38
5-D	12+40	14+34	R	194				Curb Inlet Rt. Sta. 14+34
6-D	14+36	16+48	R	212				Curb Inlet Rt. Sta. 16+48
7-D	19+51	21+59	L	208				Curb Inlet Lt. Sta. 19+50
8-D	21+61	23+39	L	178				C.I. Lt. Sta. 21+60 & 23+40
9-D	19+51	21+59	R	208				Curb Inlet Rt. Sta. 19+50
10-D	21+61	23+39	R	178				Curb Inlet Rt. Sta. 21+60
11-D	23+41	26+23	R	282				Curb Inlet Rt. Sta. 23+40
12-D	26+27	27+00	R	73				Curb Inlet Rt. Sta. 26+25
<b>Total</b>						<b>2215</b>	<b>12.1</b>	

### PRIVATE DRIVES & ROAD APPR.

Item No.	Station	Rt.	Appr.
1-E	12+49	R	4.0
2-E	14+16	L	2.0
3-E	14+51	R	4.0
4-E	15+94	L	2.0
5-E	16+75	R	3.0
6-E	18+00	L	2.0
7-E	18+32	R	3.0
8-E	18+55	R	3.0
9-E	19+27	R	3.0
10-E	21+44	R	5.0
11-E	22+46	L	2.0
12-E	23+51	L	2.0
13-E	23+76	R	2.0
14-E	23+72	R	3.0
15-E	25+00	R	3.0
16-E	25+04	R	3.0
17-E	25+46	R	4.0
18-E	25+76	R	3.0
19-E	26+12	L	4.0
20-E	26+76	L	4.0
<b>Total</b>			<b>66.0</b>

### STRUCTURES 20' SPAN AND UNDER

Unit No.	Station	Old Work	New Work	Size	Length	Detailed Dr. Sheet No.	Culvert No.
1-C	23+40			15"	42 1/2'	36	New

### CONCRETE SIDE WALK (Lt.)

Sta. 11+00 to 27+00 = 1600.0 Lin. Ft.  
Deduct 12 Drives @ 20' = 240.0 " "  
1360.0 " "  
Total 1360' x 4' = 5440 Sq. Ft. of 4" Walk  
Total 240' x 4' = 960 Sq. Ft. of 6" Walk

### TRENCH REINFORCING

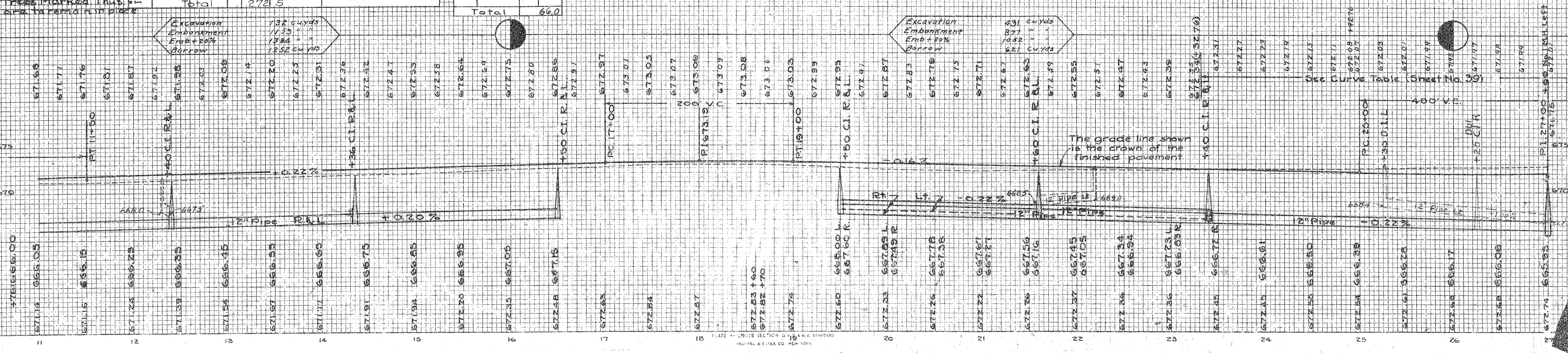
Item No.	Station	No	Size	Length	Weight Lbs.
1-R	23+40	44	3/8"	14'	643
<b>Total</b>					<b>643 Lbs.</b>

### INLETS PARTIALLY REMOVED & CAPPED AS DIRECTED

Item No.	Station	Side	Number (each)
1-F	20+96	Lt.	1
<b>Total</b>			<b>1</b>

### MONUMENT BOX & BENCH MARK ASSEMBLY

Item No.	Station	Side	Mon. Box	Bench Mk.
1-M	12+30.26	E.		
2-M	12+30.82	4' Rt.	1	
1-B	21+00	28' Lt.		1
3-M	24+92.76	4' Rt.	1	
<b>Total</b>			<b>3</b>	<b>1</b>



FINAL SURVEY TEMPLATE  
NOTE BOOK AREAS CHECKED

ORIG. SURVEY TEMPLATE  
NOTE BOOK AREAS CHECKED