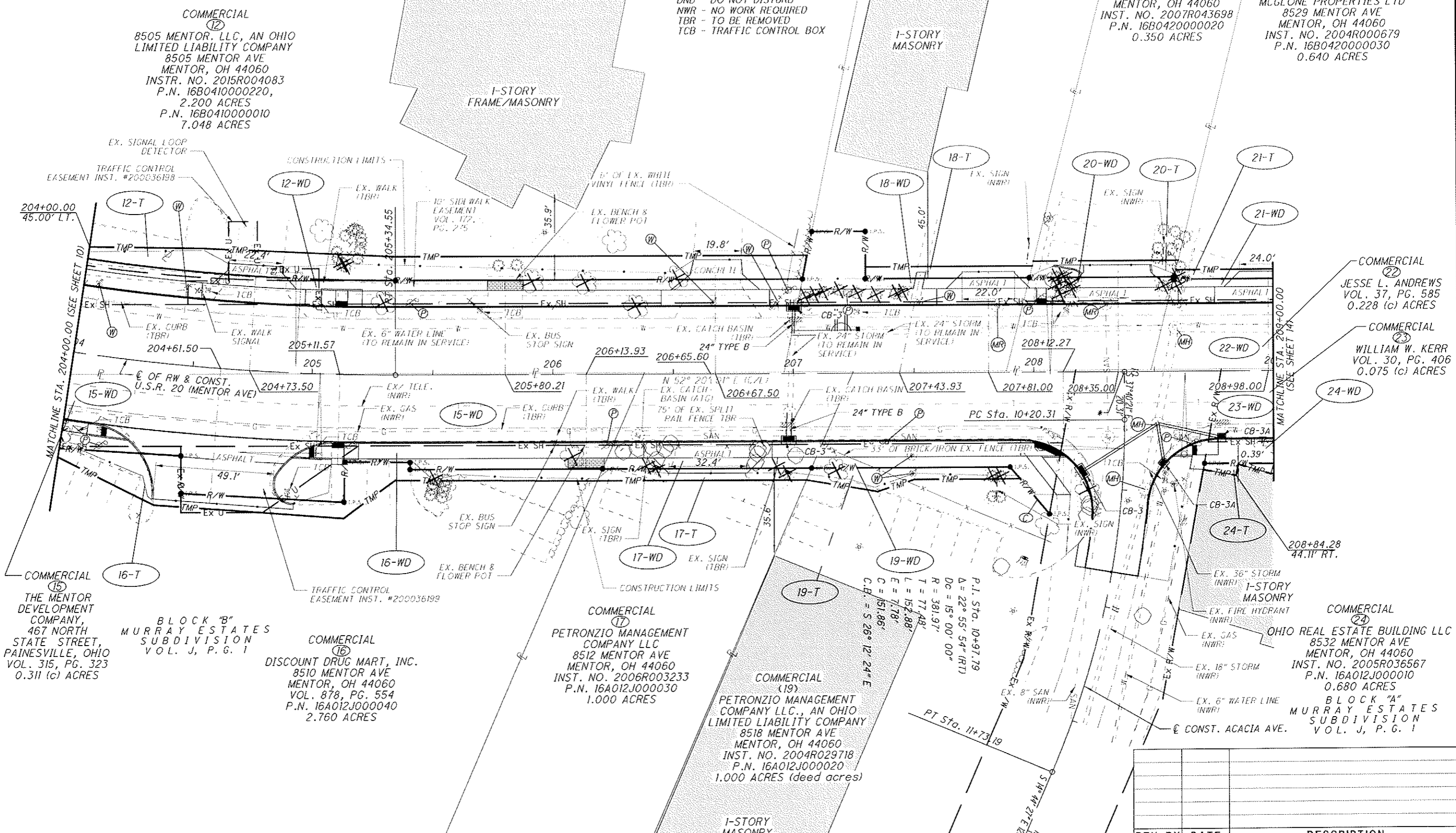


LAK-20-9.47

PART OF ORIGINAL CHURCH
LOT AND PARKS LOT
CONNECTICUT WESTERN RESERVE
CITY OF MENTOR, LAKE COUNTY, OHIO

- LEGEND**
- (P) EXISTING POWER POLE TO BE REMOVED AND RELOCATED BY OTHERS
 - (W) EXISTING WATER SERVICE TO BE ADJUSTED BY OTHERS
 - (MH) EXISTING MANHOLE TO BE ADJUSTED TO GRADE
 - (MR) MANHOLE RECONSTRUCTED TO GRADE
- ATG - ADJUSTED TO GRADE
DND - DO NOT DISTURB
NWR - NO WORK REQUIRED
TBR - TO BE REMOVED
TCB - TRAFFIC CONTROL BOX



COMMERCIAL (12)
8505 MENTOR, LLC, AN OHIO LIMITED LIABILITY COMPANY
8505 MENTOR AVE
MENTOR, OH 44060
INSTR. NO. 2015R004083
P.N. 16B0410000220,
2.200 ACRES
P.N. 16B0410000010
7.048 ACRES

COMMERCIAL (18)
JOSEPH T DAHER & RANA RICHA DAHER
8509 MENTOR AVE
MENTOR, OH 44060
INST. NO. 2007R040759
P.N. 16B0420000010
0.610 ACRES

COMMERCIAL (20)
MARIN HOLDINGS LLC
8515 MENTOR AVE
MENTOR, OH 44060
INST. NO. 2007R043698
P.N. 16B0420000020
0.350 ACRES

COMMERCIAL (21)
MCGLONE PROPERTIES LTD
8529 MENTOR AVE
MENTOR, OH 44060
INST. NO. 2004R000679
P.N. 16B0420000030
0.640 ACRES

COMMERCIAL (15)
THE MENTOR DEVELOPMENT COMPANY,
467 NORTH STATE STREET,
PAINESVILLE, OHIO
VOL. 315, PG. 323
0.311 (c) ACRES

BLOCK "B" MURRAY ESTATES SUBDIVISION VOL. J, P. G. 1

COMMERCIAL (16)
DISCOUNT DRUG MART, INC.
8510 MENTOR AVE
MENTOR, OH 44060
VOL. 878, PG. 554
P.N. 16A012J000040
2.760 ACRES

COMMERCIAL (17)
PETRONZIO MANAGEMENT COMPANY LLC
8512 MENTOR AVE
MENTOR, OH 44060
INST. NO. 2006R003233
P.N. 16A012J000030
1.000 ACRES

COMMERCIAL (19)
PETRONZIO MANAGEMENT COMPANY LLC., AN OHIO LIMITED LIABILITY COMPANY
8518 MENTOR AVE
MENTOR, OH 44060
INST. NO. 2004R029718
P.N. 16A012J000020
1.000 ACRES (deed acres)

COMMERCIAL (24)
OHIO REAL ESTATE BUILDING LLC
8532 MENTOR AVE
MENTOR, OH 44060
INST. NO. 2005R036567
P.N. 16A012J000010
0.680 ACRES
BLOCK "A" MURRAY ESTATES SUBDIVISION VOL. J, P. G. 1

P.I. Sta. 10+97.79
Δ = 22° 55' 54" (RT)
Dc = 15° 00' 00"
R = 381.97'
L = 77.48'
T = 152.88'
E = 71.78'
C = 151.86'
C.B. = S 26° 12' 24" E

REV. BY	DATE	DESCRIPTION

DATE COMPLETED 11/13/2015

* STA. 208+37.50 @ CONSTRUCTION & R/W U.S.R. 20 =
STA. 10+00.00 @ CONSTRUCTION ACACIA AVE. (S.R. 615)

RIGHT OF WAY TOPO SHEET
STA. 204+00.00 TO STA. 209+00.00

LAK-20-9.47

12 / 15

143
146

PID NO. 98679

HORIZONTAL SCALE: 1" = 20'

S.W. DESIGNER CSW P.W. REVIEWER RFM