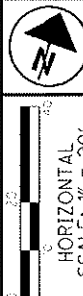


LAK-20-9.47

PART OF ORIGINAL CHURCH
LOT AND PARKS LOT
CONNECTICUT WESTERN RESERVE
CITY OF MENTOR, LAKE COUNTY, OHIO



PID NO. 98679

RIGHT OF WAY TOPO SHEET
STA. 199+00.00 TO STA. 204+00.00

LAK-20-9.47

10 / 15
141
146

COMMERCIAL (8)
C.T. PARTNERS, AN OHIO GENERAL PARTNERSHIP, P.L.L.
8443 MENTOR AVE
MENTOR, OH 44060
VOL. 1053, PG. 805
P.N. 16B0410000050
0.655 ACRES (calc.)

COMMERCIAL (10)
WAYMAR MANAGEMENT, LLC., AN OHIO LIMITED LIABILITY COMPANY
8451 MENTOR AVE
MENTOR, OH 44060
INSTR. NO. 2014R008644
P.N. 16B0410000030
1.210 ACRES

COMMERCIAL (11)
CCR HOLDINGS, LLC, AN OHIO LIMITED LIABILITY COMPANY
8457 MENTOR AVE
MENTOR, OH 44060
INSTR. NO. 2013R024204
P.N. 16B0410000020
0.940 ACRES

COMMERCIAL (12)
8505 MENTOR, LLC, AN OHIO LIMITED LIABILITY COMPANY
8505 MENTOR AVE
MENTOR, OH 44060
INSTR. NO. 2015R004083
P.N. 16B0410000010
9.248 ACRES

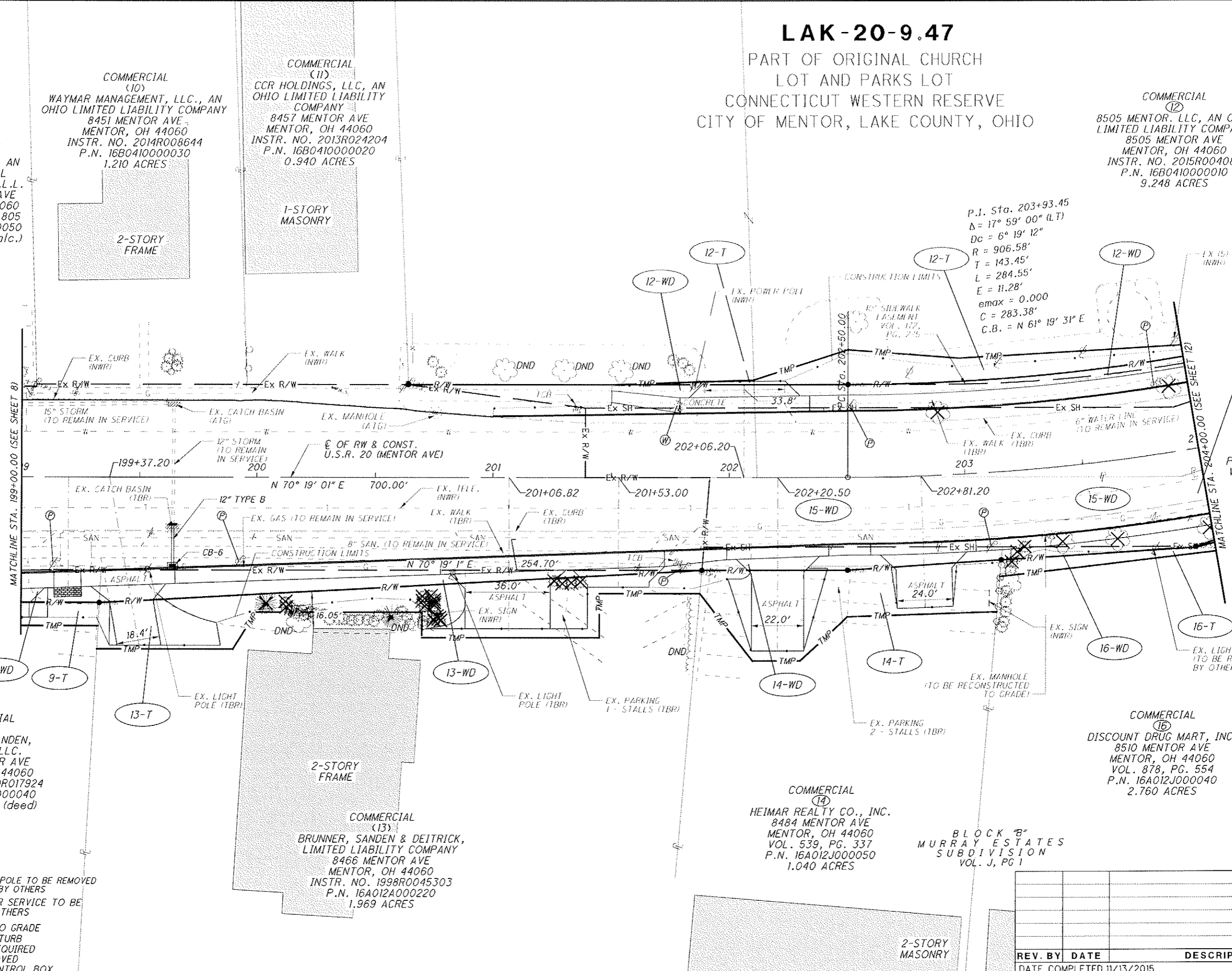
COMMERCIAL (9)
BRUNNER, SANDEN, DEITRICK, LLC.
8444 MENTOR AVE
MENTOR, OH 44060
INSTR. NO. 2010R017924
P.N. 16A012A000040
1.0775 ACRES (deed)

COMMERCIAL (13)
BRUNNER, SANDEN & DEITRICK, LIMITED LIABILITY COMPANY
8466 MENTOR AVE
MENTOR, OH 44060
INSTR. NO. 1998R0045303
P.N. 16A012A000220
1.969 ACRES

COMMERCIAL (14)
HEIMAR REALTY CO., INC.
8484 MENTOR AVE
MENTOR, OH 44060
VOL. 539, PG. 337
P.N. 16A012J000050
1.040 ACRES

COMMERCIAL (16)
DISCOUNT DRUG MART, INC.
8510 MENTOR AVE
MENTOR, OH 44060
VOL. 878, PG. 554
P.N. 16A012J000040
2.760 ACRES

LEGEND
 (P) EXISTING POWER POLE TO BE REMOVED AND RELOCATED BY OTHERS
 (W) EXISTING WATER SERVICE TO BE ADJUSTED BY OTHERS
 ATG - ADJUSTED TO GRADE
 DND - DO NOT DISTURB
 NWR - NO WORK REQUIRED
 TBR - TO BE REMOVED
 TCB - TRAFFIC CONTROL BOX



P.I. Sta. 203+93.45
 $\Delta = 17^\circ 59' 00''$ (L.T.)
 $D_c = 6^\circ 19' 12''$
 $R = 906.58'$
 $T = 143.45'$
 $L = 284.55'$
 $E = 11.28'$
 $e_{max} = 0.000$
 $C = 283.38'$
 $C.B. = N 61^\circ 19' 31'' E$

REV. BY	DATE	DESCRIPTION

DATE COMPLETED 11/13/2015