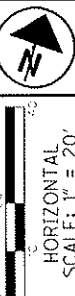


# LAK-20-9.47

PART OF ORIGINAL CHURCH  
LOT AND PARKS LOT  
CONNECTICUT WESTERN RESERVE  
CITY OF MENTOR, LAKE COUNTY, OHIO



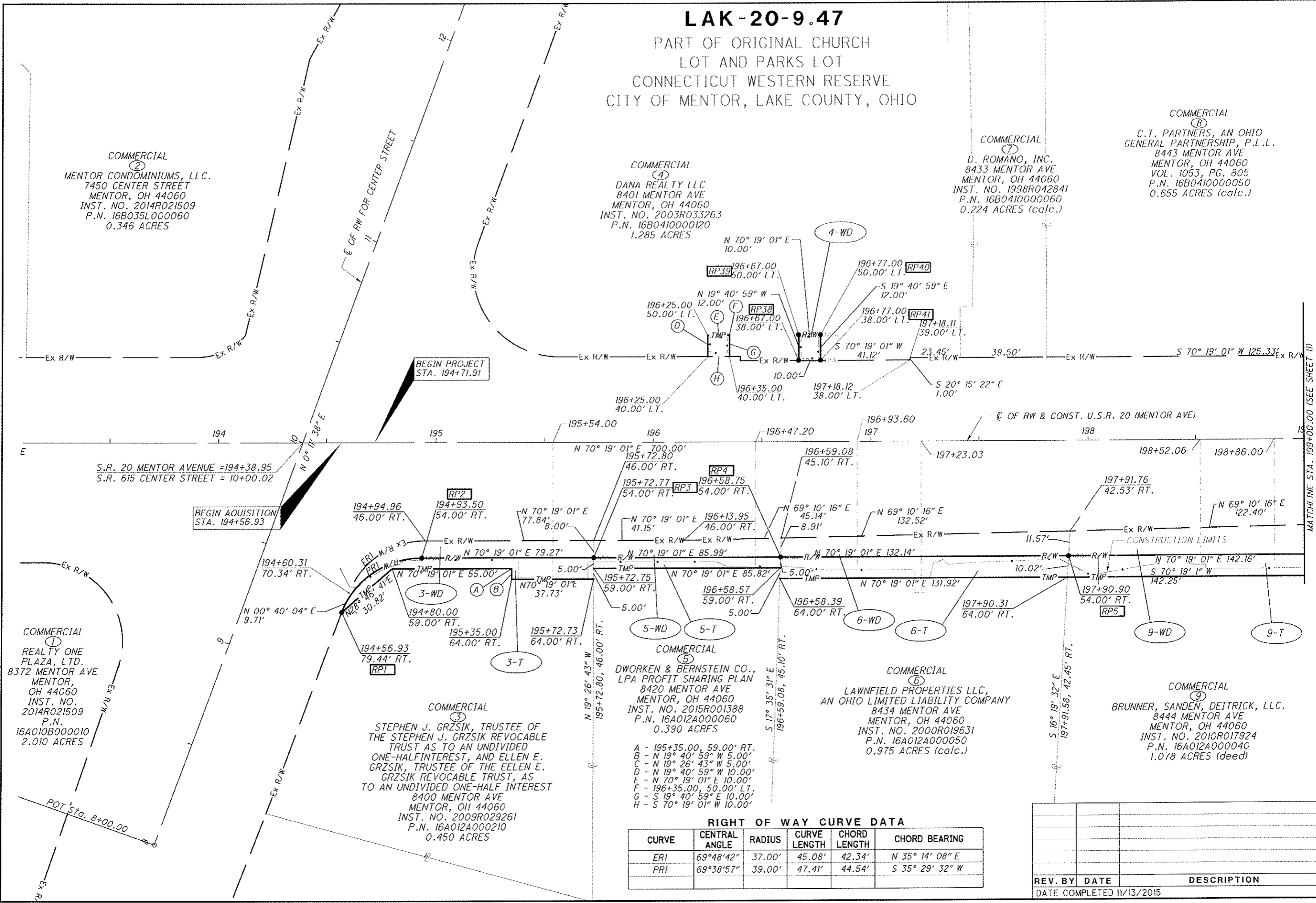
PID NO. **98679**

S/W DESIGNER CSW  
S/W REVIEWER RFM

RIGHT OF WAY BOUNDARY SHEET  
STA. 194+00.00 TO STA. 199+00.00

LAK-20-9.47

9 / 15  
140  
146



COMMERCIAL  
②  
MENTOR CONDOMINIUMS, LLC.  
7450 CENTER STREET  
MENTOR, OH 44060  
INST. NO. 2014R021509  
P.N. 16B035L000060  
0.346 ACRES

COMMERCIAL  
④  
DANA REALTY LLC  
8401 MENTOR AVE  
MENTOR, OH 44060  
INST. NO. 2003R033263  
P.N. 16B0410000120  
1.285 ACRES

COMMERCIAL  
⑦  
D. ROMANO, INC.  
8433 MENTOR AVE  
MENTOR, OH 44060  
INST. NO. 1998R042841  
P.N. 16B0410000060  
0.224 ACRES (calc.)

COMMERCIAL  
⑧  
C.T. PARTNERS, AN OHIO  
GENERAL PARTNERSHIP, P.L.L.  
8443 MENTOR AVE  
MENTOR, OH 44060  
VOL. 1053, PG. 805  
P.N. 16B0410000050  
0.655 ACRES (calc.)

COMMERCIAL  
①  
REALTY ONE  
PLAZA, LTD.  
8372 MENTOR AVE  
MENTOR, OH 44060  
INST. NO. 2014R021509  
P.N. 16A010B000010  
2.010 ACRES

COMMERCIAL  
③  
STEPHEN J. GRZSIK, TRUSTEE OF  
THE STEPHEN J. GRZSIK REVOCABLE  
TRUST AS TO AN UNDIVIDED  
ONE-HALF INTEREST, AND ELLEN E.  
GRZSIK, TRUSTEE OF THE ELEN E.  
GRZSIK REVOCABLE TRUST, AS  
TO AN UNDIVIDED ONE-HALF INTEREST  
8400 MENTOR AVE  
MENTOR, OH 44060  
INST. NO. 2009R029261  
P.N. 16A012A0000210  
0.450 ACRES

COMMERCIAL  
⑤  
DWORKEN & BERNSTEIN CO.,  
LPA PROFIT SHARING PLAN  
8420 MENTOR AVE  
MENTOR, OH 44060  
INST. NO. 2015R001388  
P.N. 16A012A0000060  
0.390 ACRES

COMMERCIAL  
⑥  
LAWNFIELD PROPERTIES LLC,  
AN OHIO LIMITED LIABILITY COMPANY  
8434 MENTOR AVE  
MENTOR, OH 44060  
INST. NO. 2000R019631  
P.N. 16A012A0000050  
0.975 ACRES (calc.)

COMMERCIAL  
⑨  
BRUNNER, SANDEN, DEITRICK, LLC.  
8444 MENTOR AVE  
MENTOR, OH 44060  
INST. NO. 2010R017924  
P.N. 16A012A0000040  
1.078 ACRES (deed)

**RIGHT OF WAY CURVE DATA**

CURVE	CENTRAL ANGLE	RADIUS	CURVE LENGTH	CHORD LENGTH	CHORD BEARING
ERI	69°48'42"	37.00'	45.08'	42.34'	N 35° 14' 08" E
PRI	69°38'57"	39.00'	47.41'	44.54'	S 35° 29' 32" W

REV. BY	DATE	DESCRIPTION

DATE COMPLETED 11/13/2015

VZ809BDD01.DGN SHEET 1

MATCHLINE STA. 199+00.00 (SEE SHEET 11)