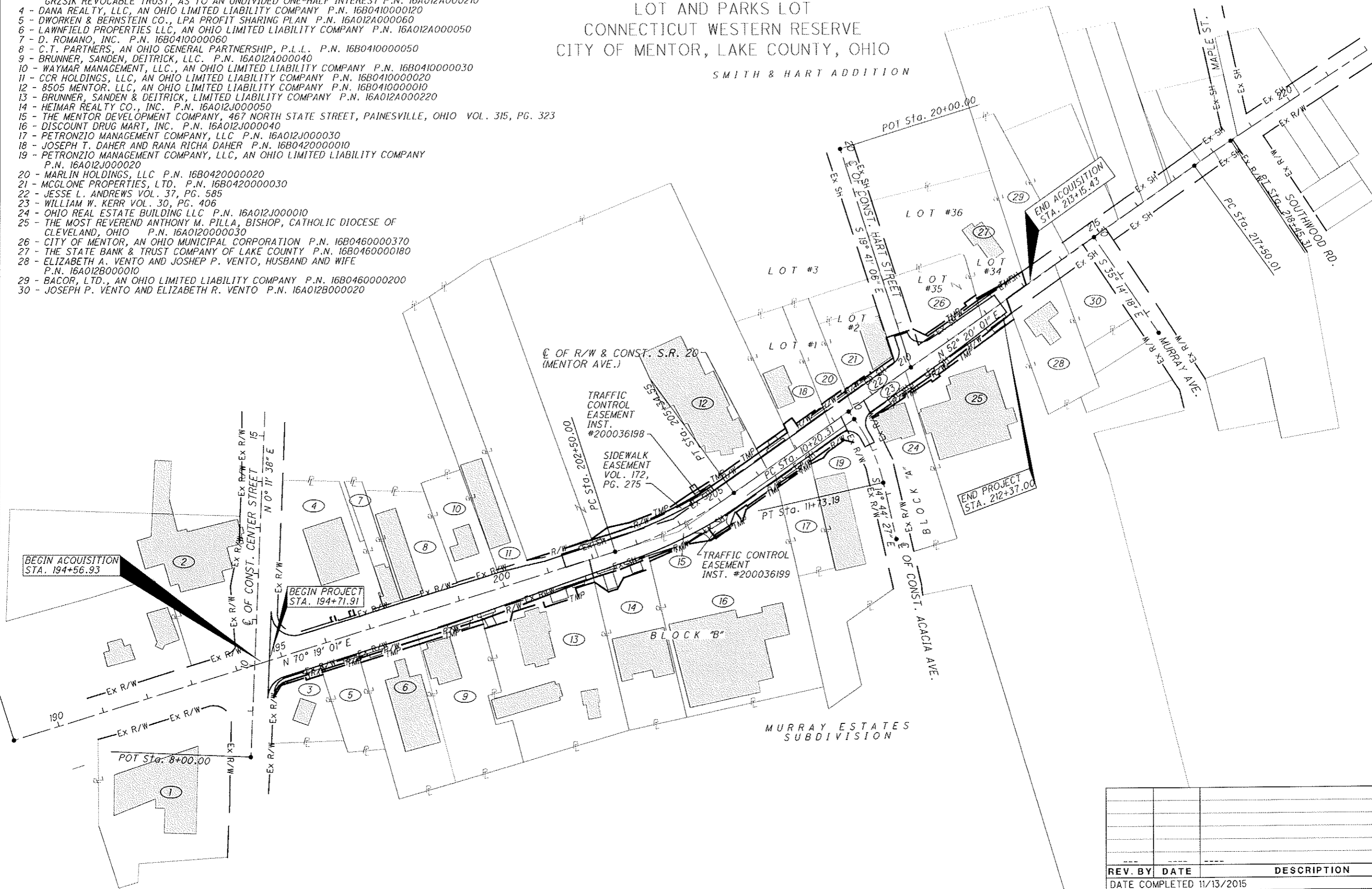


# LAK-20-9.47

PART OF ORIGINAL CHURCH  
LOT AND PARKS LOT  
CONNECTICUT WESTERN RESERVE  
CITY OF MENTOR, LAKE COUNTY, OHIO

SMITH & HART ADDITION

- 1 - REALTY ONE PLAZA, LTD., AN OHIO LIMITED LIABILITY COMPANY P.N. 16A010B000010
- 2 - MENTOR CONDOMINIUMS, LLC. P.N. 16B035L000060
- 3 - STEPHEN J. GRZSIK, TRUSTEE OF THE STEPHEN J. GRZSIK REVOCABLE TRUST AS TO AN UNDIVIDED ONE-HALF INTEREST, AND ELLEN E. GRZSIK, TRUSTEE OF THE ELLEN E. GRZSIK REVOCABLE TRUST, AS TO AN UNDIVIDED ONE-HALF INTEREST P.N. 16A012A0000210
- 4 - DANA REALTY, LLC, AN OHIO LIMITED LIABILITY COMPANY P.N. 16B04100000120
- 5 - DWORKEN & BERNSTEIN CO., LPA PROFIT SHARING PLAN P.N. 16A012A0000060
- 6 - LAWFIELD PROPERTIES LLC, AN OHIO LIMITED LIABILITY COMPANY P.N. 16A012A0000050
- 7 - D. ROMANO, INC. P.N. 16B0410000060
- 8 - C.T. PARTNERS, AN OHIO GENERAL PARTNERSHIP, P.L.L. P.N. 16B0410000050
- 9 - BRUNNER, SANDEN, DEITRICK, LLC. P.N. 16A012A0000040
- 10 - WAYMAR MANAGEMENT, LLC., AN OHIO LIMITED LIABILITY COMPANY P.N. 16B0410000030
- 11 - CCR HOLDINGS, LLC, AN OHIO LIMITED LIABILITY COMPANY P.N. 16B0410000020
- 12 - 8505 MENTOR, LLC, AN OHIO LIMITED LIABILITY COMPANY P.N. 16B0410000010
- 13 - BRUNNER, SANDEN & DEITRICK, LIMITED LIABILITY COMPANY P.N. 16A012A0000220
- 14 - HEIMAR REALTY CO., INC. P.N. 16A012J0000050
- 15 - THE MENTOR DEVELOPMENT COMPANY, 467 NORTH STATE STREET, PAINESVILLE, OHIO VOL. 315, PG. 323
- 16 - DISCOUNT DRUG MART, INC. P.N. 16A012J0000040
- 17 - PETRONZIO MANAGEMENT COMPANY, LLC P.N. 16A012J0000030
- 18 - JOSEPH T. DAHER AND RANA RICHA DAHER P.N. 16B0420000010
- 19 - PETRONZIO MANAGEMENT COMPANY, LLC, AN OHIO LIMITED LIABILITY COMPANY P.N. 16A012J0000020
- 20 - MARLIN HOLDINGS, LLC P.N. 16B0420000020
- 21 - MCGLONE PROPERTIES, LTD. P.N. 16B0420000030
- 22 - JESSE L. ANDREWS VOL. 37, PG. 585
- 23 - WILLIAM W. KERR VOL. 30, PG. 406
- 24 - OHIO REAL ESTATE BUILDING LLC P.N. 16A012J0000010
- 25 - THE MOST REVEREND ANTHONY M. PILLA, BISHOP, CATHOLIC DIOCESE OF CLEVELAND, OHIO P.N. 16A0120000030
- 26 - CITY OF MENTOR, AN OHIO MUNICIPAL CORPORATION P.N. 16B0460000370
- 27 - THE STATE BANK & TRUST COMPANY OF LAKE COUNTY P.N. 16B0460000180
- 28 - ELIZABETH A. VENTO AND JOSHEP P. VENTO, HUSBAND AND WIFE P.N. 16A012B0000010
- 29 - BACOR, LTD., AN OHIO LIMITED LIABILITY COMPANY P.N. 16B0460000200
- 30 - JOSEPH P. VENTO AND ELIZABETH R. VENTO P.N. 16A012B0000020



PROPERTY MAP

LAK-20-9.47

PID NO. 98679

REV. BY DATE DESCRIPTION

DATE COMPLETED 11/13/2015

5 / 15

136  
146

98679R001 SHEET 1