

### SIGNAL DISPLAY CHART

| SIGNAL HEAD | Ø1 + Ø5 |       | Ø1 + Ø6 |       | Ø2 + Ø6 |       | Ø4  |       | FLASH |
|-------------|---------|-------|---------|-------|---------|-------|-----|-------|-------|
|             | R/W     | CLEAR | R/W     | CLEAR | R/W     | CLEAR | R/W | CLEAR |       |
| A           | R       | R     | R       | R     | R       | R     | R   | R     | R     |
| B           | R       | R     | R       | R     | R       | R     | R   | R     | R     |
| C           | R       | R     | R       | R     | R       | R     | R   | R     | R     |
| D           | R       | R     | R       | R     | R       | R     | R   | R     | R     |
| E           | R       | R     | R       | G     | Y       | R     | R   | R     | Y     |
| F           | R       | R     | R       | G     | Y       | R     | R   | R     | Y     |
| G           | G       | G     | G       | G     | Y       | R     | R   | R     | Y     |
| H           | G       | G     | G       | G     | Y       | R     | R   | R     | Y     |
| S-S         | W       | W     | W       | W     | FD      | D     | D   | D     | DARK  |
| T-T         | D       | D     | D       | W     | FD      | D     | D   | D     | DARK  |
| U-U         | D       | D     | D       | D     | D       | D     | D   | D     | DARK  |

NOTES:

- REMAINS "G" IF PHASE 2+6 IS NEXT

### LOOP DETECTOR CHART

| LOOP # | SIZE     | # TURNS | MODE     | DELAY | AMP # | PHASE  |
|--------|----------|---------|----------|-------|-------|--------|
| L1     | 6' x 35' | 2-4-2   | PRESENCE | 0     | 1     | 2      |
| L2     | 6' x 35' | 2-4-2   | PRESENCE | 0     | 2     | 4      |
| L3     | 6' x 35' | 2-4-2   | PRESENCE | 8     | 3     | 4      |
| L4     | 6' x 35' | 2-4-2   | PRESENCE | 0     | 4     | 4      |
| L5     | 6' x 35' | 2-4-2   | PRESENCE | 8     | 5     | 4      |
| L6     | 6' x 20' | 2-4-2   | PRESENCE | 0     | 6     | 5      |
| L7     | 6' x 6'  | 3       | PRESENCE | 0     | 7     | SYSTEM |
| L8     | 6' x 6'  | 3       | PRESENCE | 0     | 8     | SYSTEM |

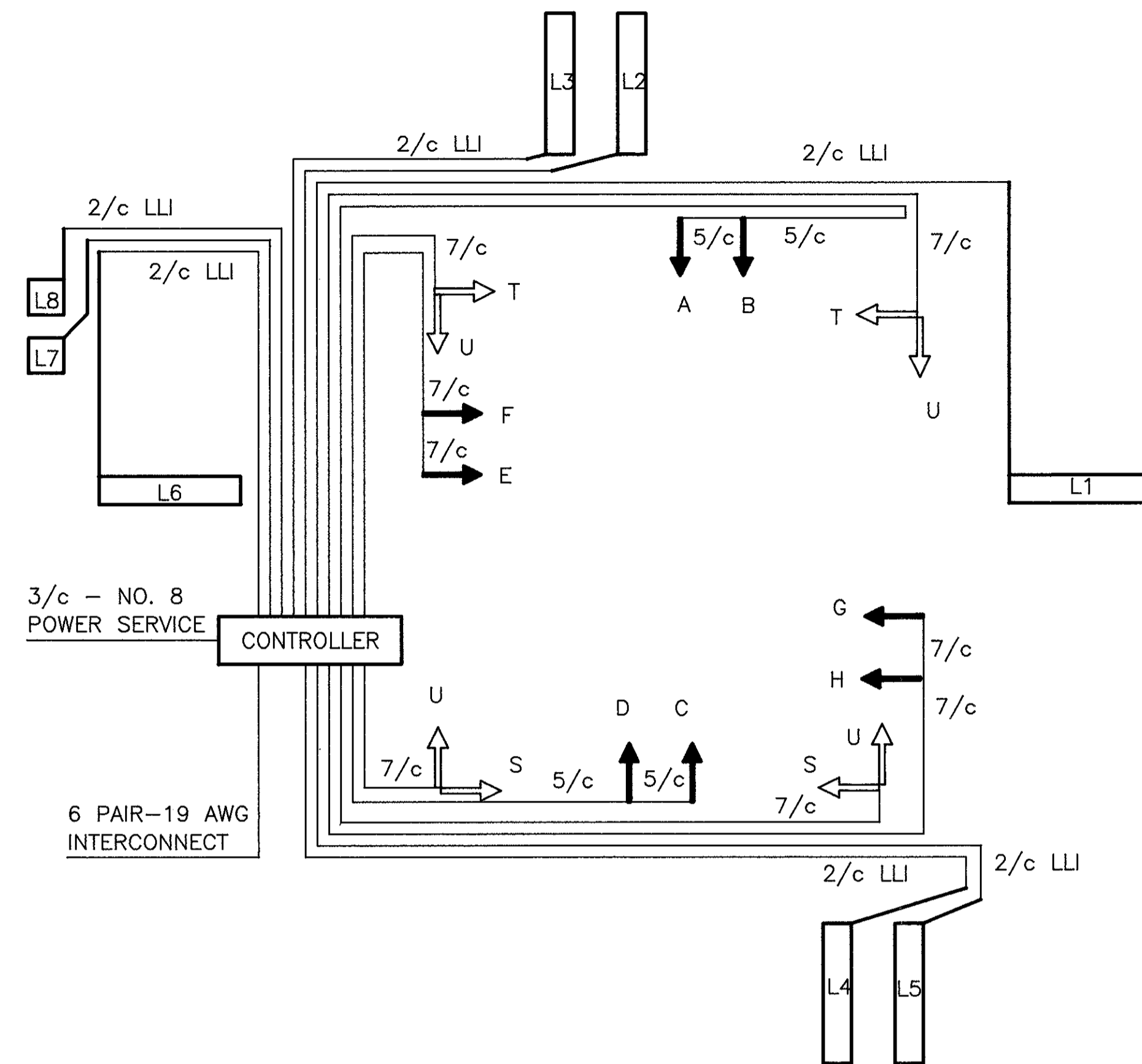
### COORDINATION TIMING

|                      | DIAL 1          | DIAL 2                   | DIAL 3 |
|----------------------|-----------------|--------------------------|--------|
| CYCLE LENGTH         | 80 SEC          | 90 SEC                   |        |
| PHASE 1 SPLIT        | 61 %            | 64 %                     |        |
| PHASE 2 SPLIT        | 14 %            | 12 %                     |        |
| PHASE 4 SPLIT        | 25 %            | 24 %                     |        |
| PHASE 5 SPLIT        | 17 %            | 29 %                     |        |
| PHASE 6 SPLIT        | 58 %            | 47 %                     |        |
| PERMISSIVE           | 5 %             | 5 %                      |        |
| OFFSET               | 18 %            | 9                        |        |
| TIME OF DAY SCHEDULE | ALL OTHER TIMES | 3:00PM TO 6:30PM MON-SAT |        |

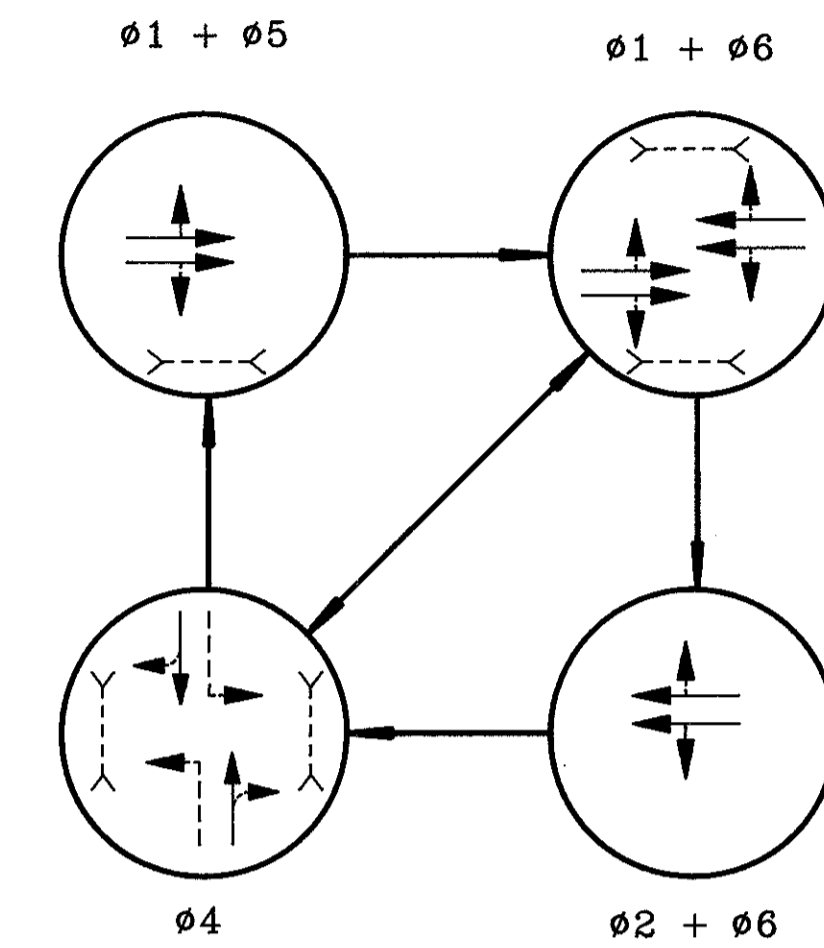
NOTES:

- PHASE SPLITS SHALL INCLUDE ALL GREEN PLUS YELLOW & ALL RED
- PERMISSIVES SHALL START AT THE ZERO POINT OF THE CYCLE
- OFFSETS SHALL BE REFERENCED TO THE BEGINNING OF PHASE 1 YELLOW

### WIRING DIAGRAM



### PHASING DIAGRAM



### SIGNAL TIMING

| INTERVAL  | Ø1   | Ø2   | Ø4   | Ø5   | Ø6   |
|-----------|------|------|------|------|------|
| INITIAL   | 21   | 7    | 10   | 7    | 17   |
| PASSAGE   | 5.0  | 2.5  | 3.0  | 2.5  | 5.0  |
| YELLOW    | 3.6  | 3.0  | 3.6  | 3.0  | 3.6  |
| RED CLEAR | 1.4  | 1.0  | 1.4  | 1.0  | 1.4  |
| MAX I     | 26   | 8    | 21   | 8    | 26   |
| MAX II    | 26   | 8    | 21   | 8    | 26   |
| WALK      | 7    | 0    | 7    | 0    | 7    |
| PED CLEAR | 14   | 0    | 8    | 0    | 10   |
| RECALL    | PED  | NONE | NONE | NONE | PED  |
| MEMORY    | LOCK | OFF  | LOCK | OFF  | LOCK |

| ITEM | TOTAL | UNIT   | DESCRIPTION  |
|------|-------|--------|--|
| 625  | 5     | EACH   | GROUND ROD   |
| 625  | 5     | EACH   | PULLBOX, 713.08, 18", AS PER PLAN  |
| 625  | 139   | LIN FT | CONDUIT 2", 713.04   |
| 625  | 267   | LIN FT | CONDUIT 3", 713.04   |
| 625  | 45    | LIN FT | TRENCH   |
| 625  | 361   | LIN FT | TRENCH IN PAVED AREAS, TYPE "B"  |
| 632  | 6     | EACH   | VEHICULAR SIGNAL HEAD, 3 SECT., 12" LENS, 1 WAY, AS PER PLAN                   |
| 632  | 2     | EACH   | VEHICULAR SIGNAL HEAD, 5 SECT., 12" LENS, 1 WAY, AS PER PLAN                   |
| 632  | 8     | EACH   | PEDESTRIAN SIGNAL HEAD, TYPE "D-2"   |
| 632  | 4     | EACH   | PEDESTRIAN PUSHBUTTON WITH R-73C-9 SIGN  |
| 632  | 6     | EACH   | LOOP DETECTOR UNIT, AS PER PLAN  |
| 632  | 2     | EACH   | LOOP DETECTOR UNIT, DELAY & EXTENSION TYPE, AS PER PLAN                        |
| 632  | 872   | LIN FT | LOOP DETECTOR PAVEMENT CUTTING   |
| 632  | 8.28  | CU YD  | CONCRETE FOR ANCHOR BASE FOUNDATIONS   |
| 632  | 1     | EACH   | SIGNAL SUPPORT, TYPE TC-81.20, DES. 1, 24' ARM                                 |
| 632  | 1     | EACH   | SIGNAL SUPPORT, TYPE TC-81.20, DES. 2, 26' ARM                                 |
| 632  | 1     | EACH   | SIGNAL SUPPORT, TYPE TC-81.20, DES. 11, 40' ARM                                |
| 632  | 1     | EACH   | SIGNAL SUPPORT, TYPE TC-81.20, DES. 11, 44' ARM                                |
| 632  | 1     | EACH   | CONDUIT RISER, 2" DIAMETER   |
| 632  | 693   | LIN FT | SIGNAL CABLE, 5 CONDUCTOR, NO. 14 AWG  |
| 632  | 483   | LIN FT | SIGNAL CABLE, 7 CONDUCTOR, NO. 14 AWG  |
| 632  | 2372  | LIN FT | LOOP DETECTOR WIRE, TYPE E   |
| 632  | 1014  | LIN FT | LOOP DETECTOR LEAD-IN CABLE  |
| 632  | 42    | LIN FT | POWER CABLE, 3 CONDUCTOR, NO. 8 AWG  |
| 632  | 1     | EACH   | POWER SERVICE  |
| 632  | 8     | EACH   | COVERING OF VEHICULAR SIGNAL HEADS   |
| 632  | 1     | EACH   | REMOVAL OF TRAFFIC SIGNAL INSTALLATION, AS PER PLAN                            |
| 633  | 1     | EACH   | CONTROLLER, ACTUATED, 5 PHASE, SOLID-STATE DIGITAL MICROPROCESSOR, AS PER PLAN |
| 633  | 1     | EACH   | COORDINATOR, MULTI-DIAL, SOLID-STATE, DIGITAL, MICROPROCESSOR SECONDARY        |