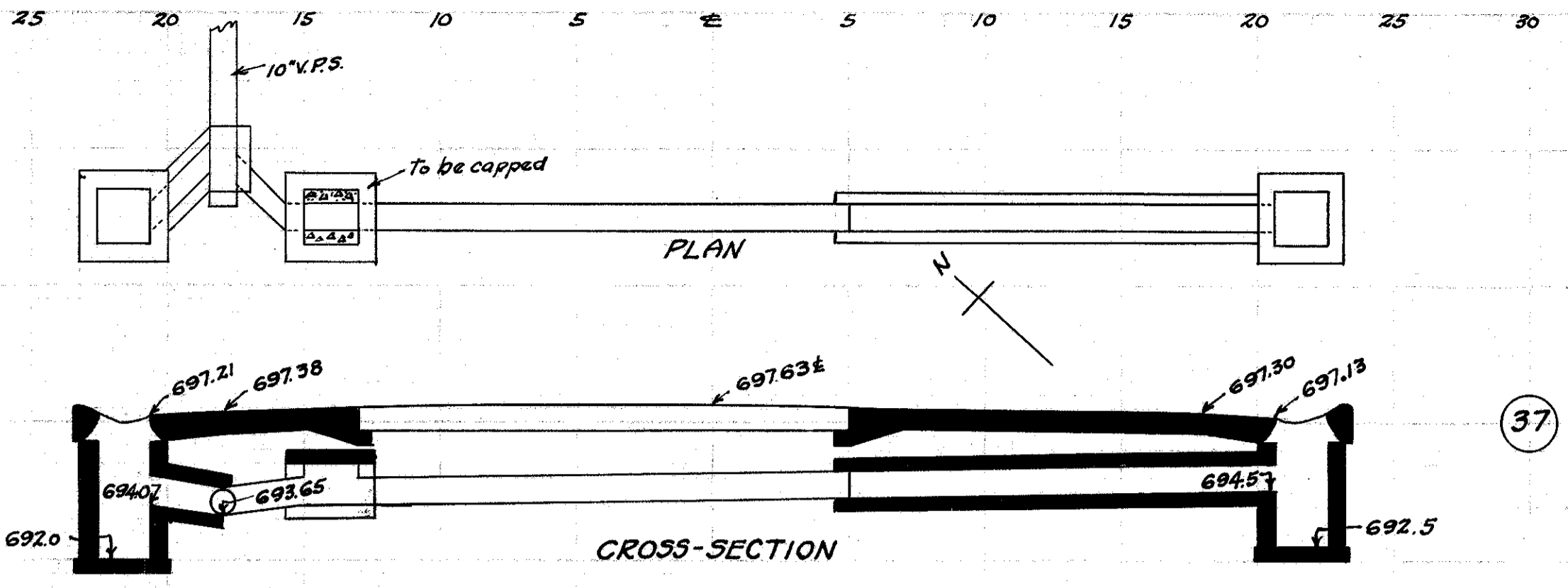


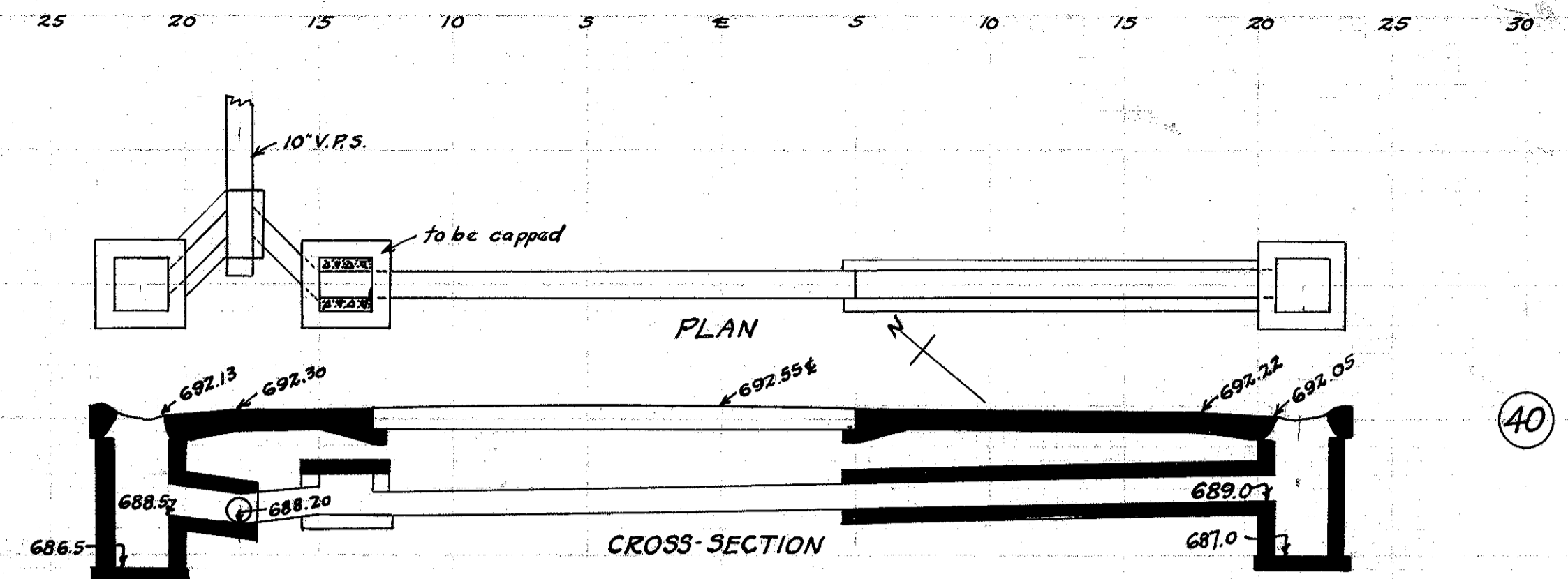
FED. RD. DIST. NO.	STATE	FED. AID PROJECT	FISCAL YEAR	48
10	OHIO	519C	1929	52

S.H. No. 2 Sec. G, H, + Mentor LAKE COUNTY.



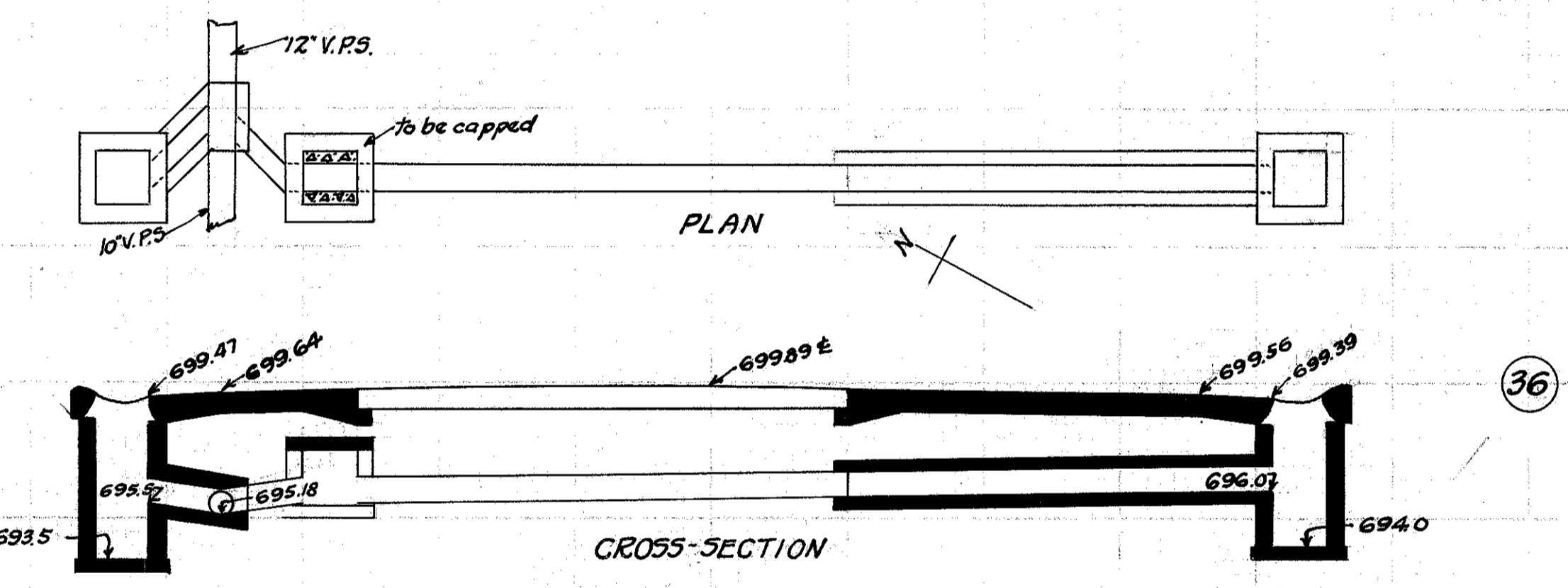
CULVERT DATA
 Type: Std. V.S.P. culvert Dr. #300
 Size: 10' x 18'
 Work Req.: Extend pres. culv. to R with 10' x 16' Std. V.P. enc. culvert.
 Build C.B. R+L. On L connect to pres. sewer with 10' x 2' V.P. enc. Cap old I.B. on L.
 Drawn by: Beebe + Plummer
 Date: 2-25-29

EST. QUANTITIES
 Exc. 4.0 cu. yds.
 Con. 1-8 1.79 cu. yds.
 Con. 1-5/2 (precast cap) 0.2 cu. yds.
 Reinf. Steel 22 lbs.
 10' V.P. 18 lin. ft.
 C.B. (old covers reset) (Rdwy) 2
 Sta. 332+96



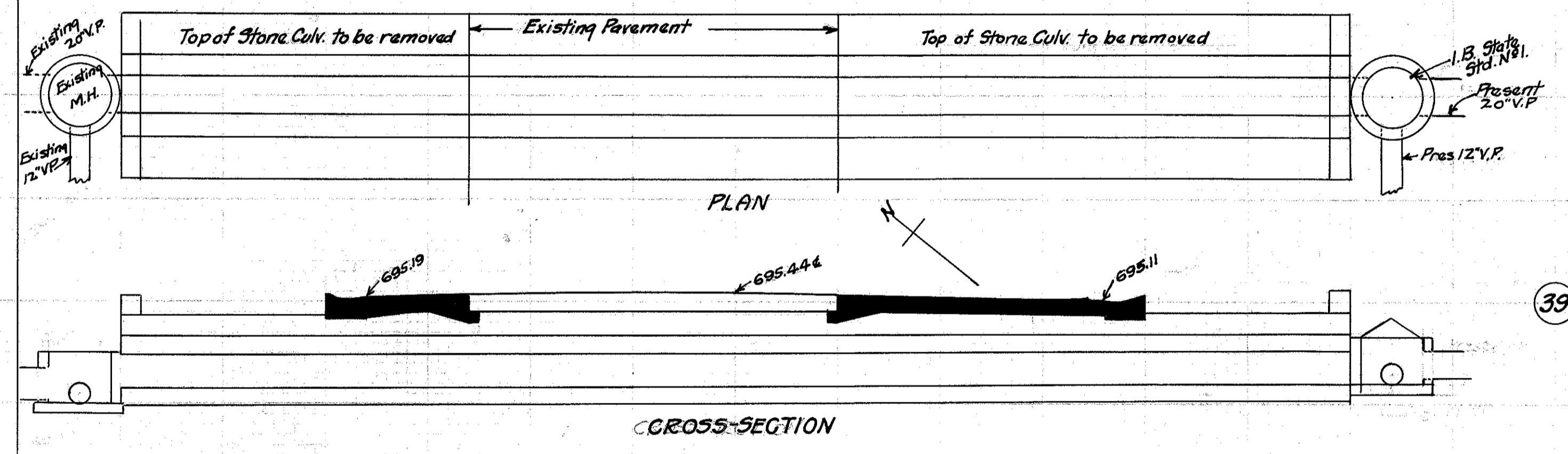
CULVERT DATA
 Type: Std. V.S.P. culvert Dr. #300
 Size: 10' x 18'
 Work Req.: Extend pres. culv. to R with 10' x 16' Std. V.P. enc. culvert.
 Build C.B. R+L. On L connect to pres. sewer with 10' x 2' V.P. enc. Cap old I.B. on L.
 Drawn by: Beebe + Plummer
 Date: 2-25-29

EST. QUANTITIES
 Exc. 4.7 cu. yds.
 Con. 1-8 1.79 cu. yds.
 Con. 1-5/2 (precast cap) 0.2 cu. yds.
 Reinf. Steel 22 lbs.
 10' V.P. 18 lin. ft.
 C.B. (old covers reset) (Rdwy) 2
 Sta. 346+80



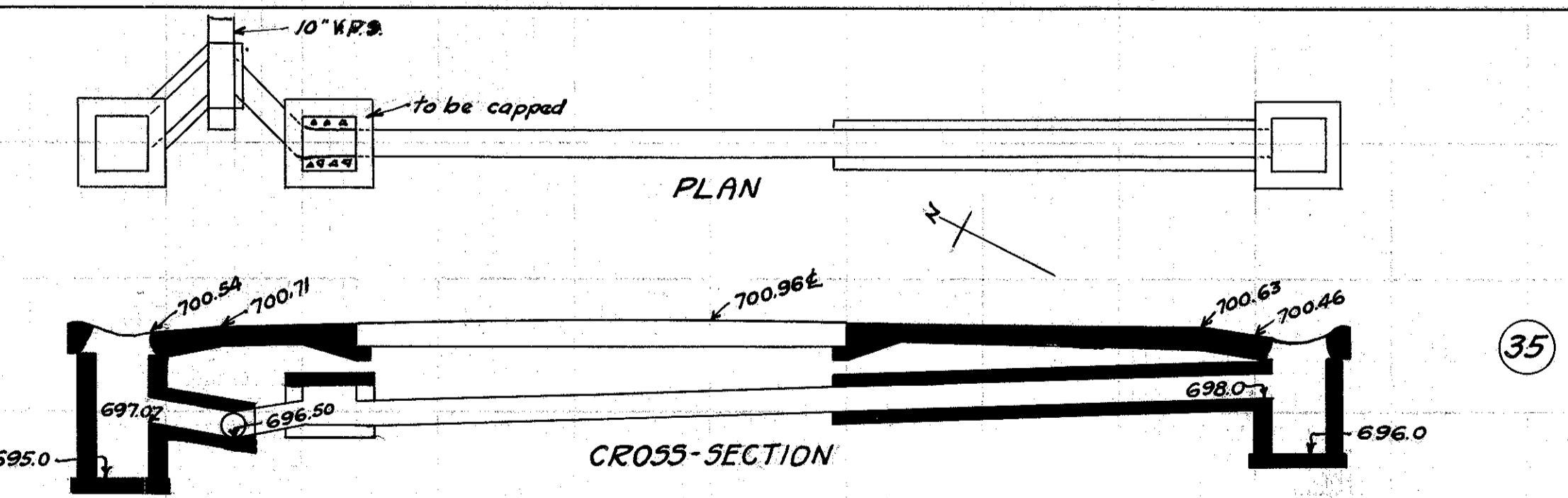
CULVERT DATA
 Type: Std. V.S.P. culvert Dr. #300
 Size: 10' x 18'
 Work Req.: Extend pres. culv. to R with 10' x 16' Std. V.P. enc. culvert.
 Build C.B. R+L. On L connect to pres. sewer with 10' x 2' V.P. enc. Cap old I.B. on L.
 Drawn by: Beebe + Plummer
 Date: 2-25-29

EST. QUANTITIES
 Exc. 5.8 cu. yds.
 Con. 1-8 1.79 cu. yds.
 Con. 1-5/2 (precast cap) 0.2 cu. yds.
 Reinf. Steel 22 lbs.
 10' V.P. 18 lin. ft.
 C.B. (old covers reset) (Rdwy) 2
 Sta. 323+96



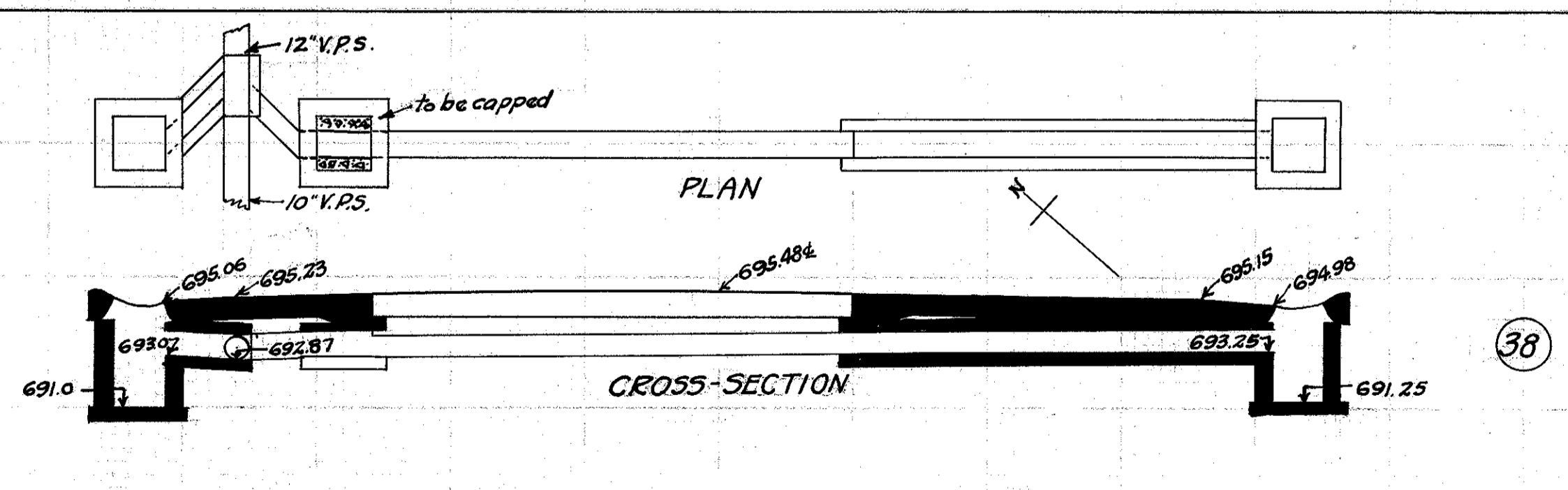
CULVERT DATA
 Type: V.S.P. enc. culvert.
 Size: 20' x 60'
 Work Req.: Stone top of pres. culv. to be removed outside limits of pres. pave. Pres. stone box to be cleaned out sufficient to allow 20' x 60' V.P. enc. culv. to be laid between present walls. Space between walls and pipe to be entirely filled with conc. Under pres. pave. concrete around pipe to be rammed into place. Build State Std. #1 I.B. on R.
 Drawn by: Beebe + Plummer
 Date: 2-25-29

EST. QUANTITIES
 Exc. 7.0 cu. yds.
 Con. 1-8 17.0 cu. yds.
 Stone Mas. Removed 12.0 cu. yds.
 20' V.P. 60 lin. ft.
 I.B. (State Std. #1) (Rdwy) 1
 Sta. 341+23



CULVERT DATA
 Type: Std. V.P. culvert Dr. #300
 Size: 10' x 18'
 Work Req.: Extend pres. culv. to R with 10' x 16' Std. V.P. enc. culvert.
 Build C.B. R+L. On L connect to pres. sewer with 10' x 2' V.P. enc. Cap old I.B. on L.
 Drawn by: Beebe + Plummer
 Date: 2-25-29

EST. QUANTITIES
 Exc. 4.5 cu. yds.
 Con. 1-8 1.79 cu. yds.
 Con. 1-5/2 (precast cap) 0.2 cu. yds.
 Reinf. Steel 22 lbs.
 10' V.P. 18 lin. ft.
 C.B. (old covers reset) (Rdwy) 2
 Sta. 318+50



CULVERT DATA
 Type: Std. V.S.P. culvert Dr. #300
 Size: 10' x 18'
 Work Req.: Extend pres. culv. to R with 10' x 16' Std. V.P. enc. culvert.
 Build C.B. R+L. On L connect to pres. sewer with 10' x 2' V.P. enc. Cap old I.B. on L.
 Drawn by: Beebe + Plummer
 Date: 2-25-29

EST. QUANTITIES
 Exc. 3.5 cu. yds.
 Con. 1-8 1.79 cu. yds.
 Con. 1-5/2 (precast cap) 0.2 cu. yds.
 Reinf. Steel 22 lbs.
 10' V.P. 18 lin. ft.
 C.B. (old covers reset) (Rdwy) 2
 Sta. 336+88