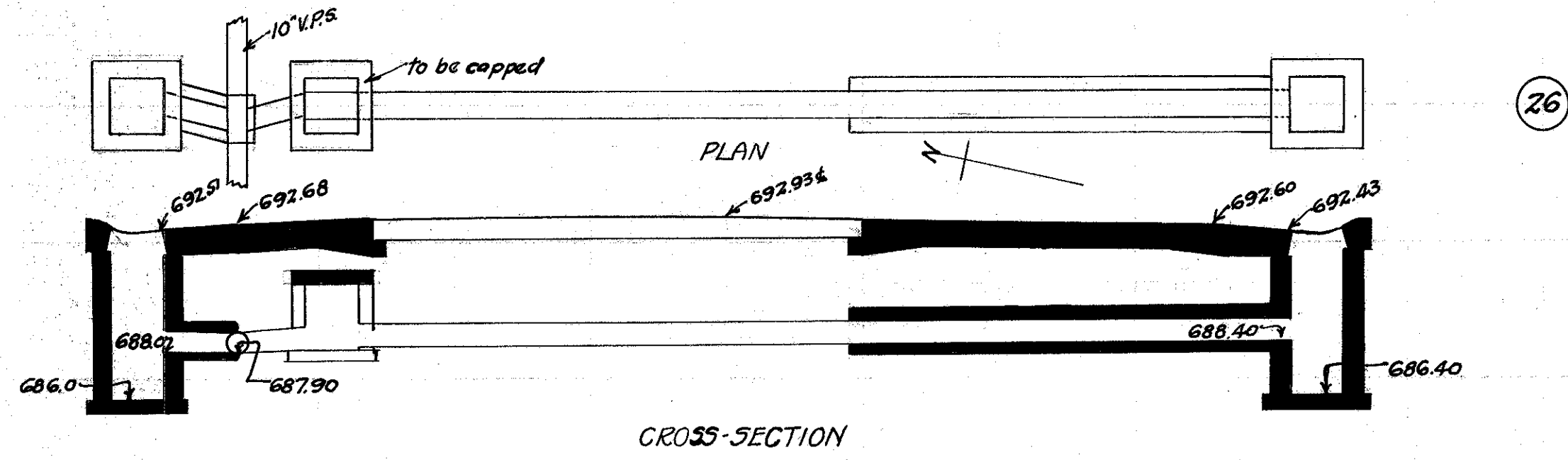


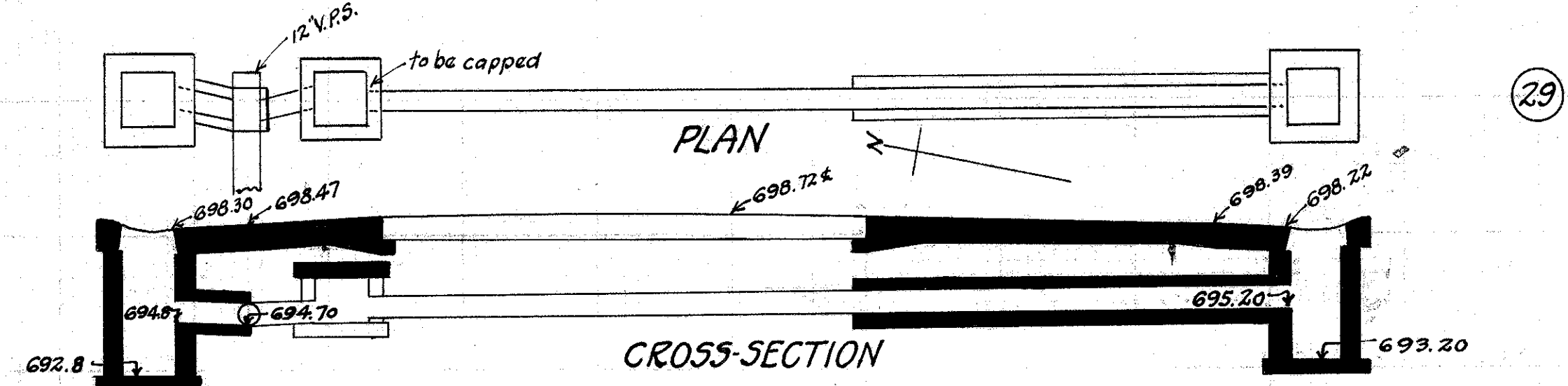
FED. RD. DIST. NO.	STATE	FED. AID PROJECT	FISCAL YEAR	46
10	OHIO	519C	1929	52

S.H. No. 2 Sec. G, H, Mentor  
LAKE COUNTY.



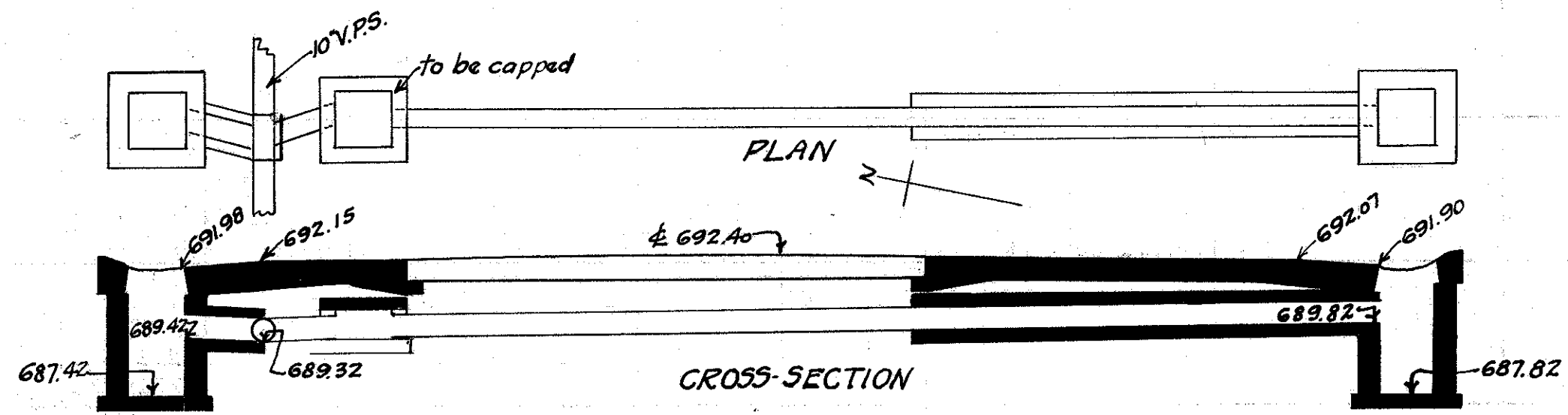
**CULVERT DATA**  
Type: Std. V.S.P. culvert Dr. #300  
Size: 10' x 18'  
Work Req.: Extend present culv. to R with 10'x16' Std. V.P. enc. culvert.  
Build C.B. R+L. On L. connect to pres. sewer with 10'x2' V.P. enc.  
Cap old I.B. on L.  
Drawn by: Beebe + Plummer. Checked by: \_\_\_\_\_  
Date: 2-21-29 Date: \_\_\_\_\_

**EST. QUANTITIES**  
Exc. 6.3 cu. yds.  
Con. 1-8 1.69 cu. yds.  
Con. 1-5/2 (precast cap) 0.2 cu. yds.  
Reinf. Steel 22 lbs.  
10' V.P. 18 lin. ft.  
C.B. (old covers reset) (Relwy) 2  
Sta. 260+96



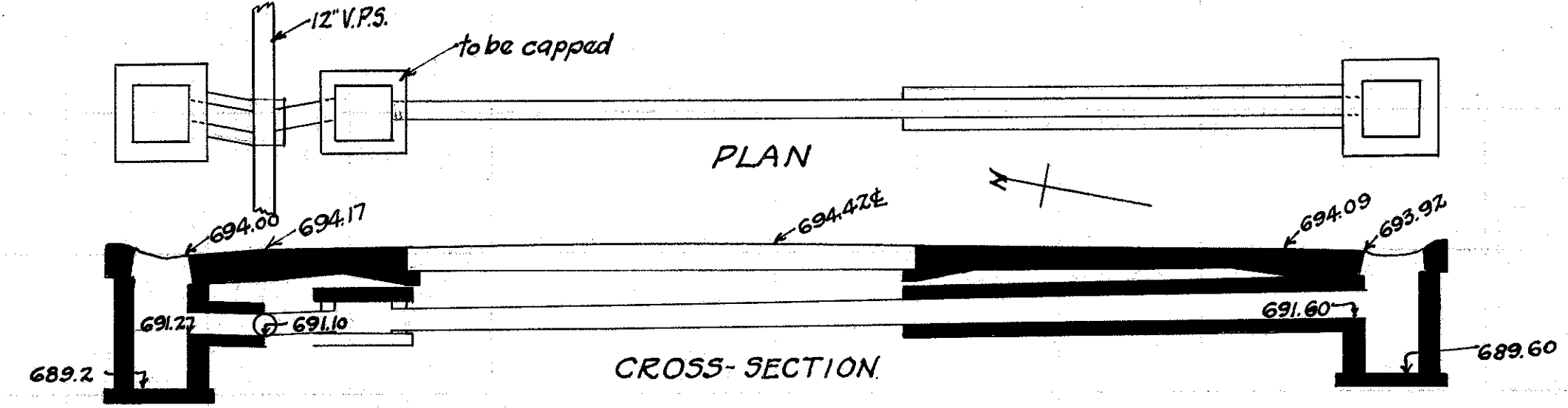
**CULVERT DATA**  
Type: Std. V.S.P. culvert Dr. #300  
Size: 10' x 18'  
Work Req.: Extend pres. culv. to R with 10'x16' Std. V.P. enc. culvert.  
Build C.B. R+L. On L. connect to pres. sewer with 10'x2' V.P. enc.  
Cap old I.B. on L.  
Drawn by: Beebe + Plummer. Checked by: \_\_\_\_\_  
Date: 2-21-29 Date: \_\_\_\_\_

**EST. QUANTITIES**  
Exc. 5.3 cu. yds.  
Con. 1-8 1.69 cu. yds.  
Con. 1-5/2 (precast cap) 0.2 cu. yds.  
Reinf. Steel 22 lbs.  
10' V.P. 18 lin. ft.  
C.B. (old covers reset) (Relwy) 2  
Sta. 279+92



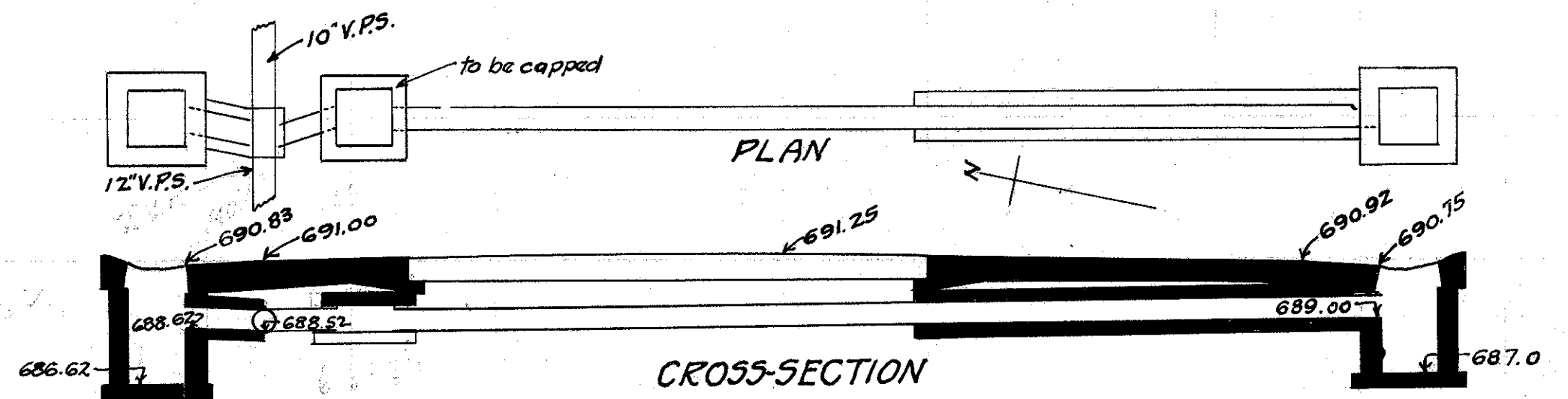
**CULVERT DATA**  
Type: Std. V.S.P. culvert Dr. #300  
Size: 10' x 18'  
Work Req.: Extend present culv. to R with 10'x16' Std. V.P. enc. culvert.  
Build C.B. R+L. On L. connect to pres. sewer with 10'x2' V.P. enc.  
Cap old I.B. on L.  
Drawn by: Beebe + Plummer. Checked by: \_\_\_\_\_  
Date: 2-21-29 Date: \_\_\_\_\_

**EST. QUANTITIES**  
Exc. 3.6 cu. yds.  
Con. 1-8 1.69 cu. yds.  
Con. 1-5/2 (precast cap) 0.2 cu. yds.  
Reinf. Steel 22 lbs.  
10' V.P. 18 lin. ft.  
C.B. (old covers reset) (Relwy) 2  
Sta. 252+96



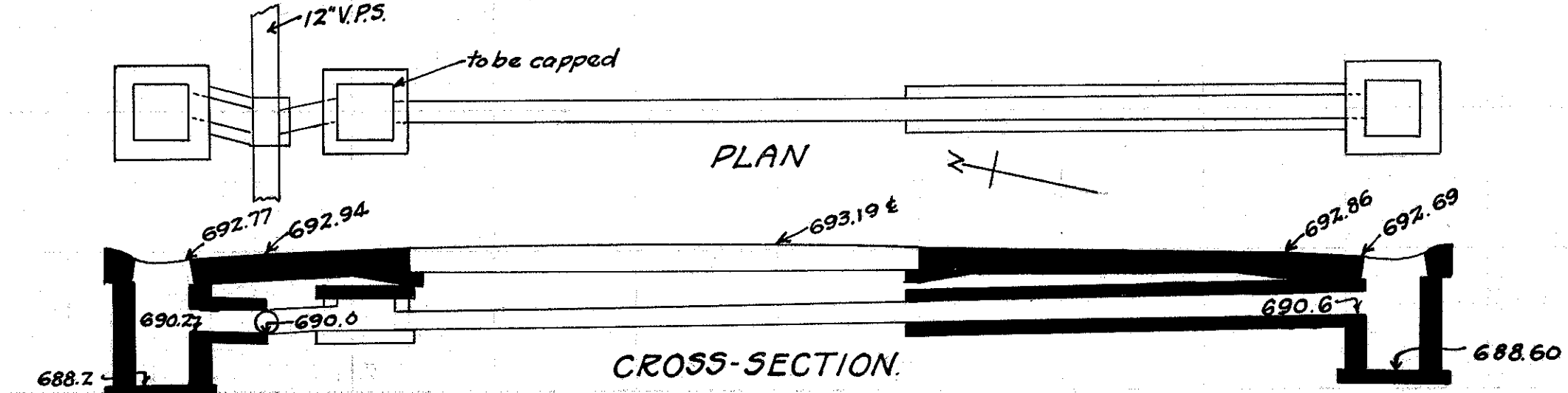
**CULVERT DATA**  
Type: Std. V.S.P. culvert Dr. #300  
Size: 10' x 18'  
Work Req.: Extend pres. culv. to R with 10'x16' Std. V.P. enc. culvert.  
Build C.B. R+L. On L. connect to pres. sewer with 10'x2' V.P. enc.  
Cap old I.B. on L.  
Drawn by: Beebe + Plummer. Checked by: \_\_\_\_\_  
Date: 2-23-29 Date: \_\_\_\_\_

**EST. QUANTITIES**  
Exc. 4.3 cu. yds.  
Con. 1-8 1.69 cu. yds.  
Con. 1-5/2 (precast cap) 0.2 cu. yds.  
Reinf. Steel 22 lbs.  
10' V.P. 18 lin. ft.  
C.B. (old covers reset) (Relwy) 2  
Sta. 275+98



**CULVERT DATA**  
Type: Std. V.S.P. culvert Dr. #300  
Size: 10' x 18'  
Work Req.: Extend pres. culvert to R with 10'x16' Std. V.P. enc. culvert.  
Build C.B. R+L. On L. connect to pres. sewer with 10'x2' V.P. enc.  
Cap old I.B. on L.  
Drawn by: Beebe + Plummer. Checked by: \_\_\_\_\_  
Date: 2-21-29 Date: \_\_\_\_\_

**EST. QUANTITIES**  
Exc. 3.4 cu. yds.  
Con. 1-8 1.69 cu. yds.  
Con. 1-5/2 (precast cap) 0.2 cu. yds.  
Reinf. Steel 22 lbs.  
10' V.P. 18 lin. ft.  
C.B. (old covers reset) (Relwy) 2  
Sta. 248+96.



**CULVERT DATA**  
Type: Std. V.S.P. culvert Dr. #300.  
Size: 10' x 18'  
Work Req.: Extend pres. culv. to R with 10'x16' Std. V.P. enc. culvert.  
Build C.B. R+L. On L. connect to pres. sewer with 10'x2' V.P. enc.  
Cap old I.B. on L.  
Drawn by: Beebe + Plummer. Checked by: \_\_\_\_\_  
Date: 2-23-29 Date: \_\_\_\_\_

**EST. QUANTITIES**  
Exc. 4.0 cu. yds.  
Con. 1-8 1.69 cu. yds.  
Con. 1-5/2 (precast cap) 0.2 cu. yds.  
Reinf. Steel 22 lbs.  
10' V.P. 18 lin. ft.  
C.B. (old covers reset) (Relwy) 2  
Sta. 271+97