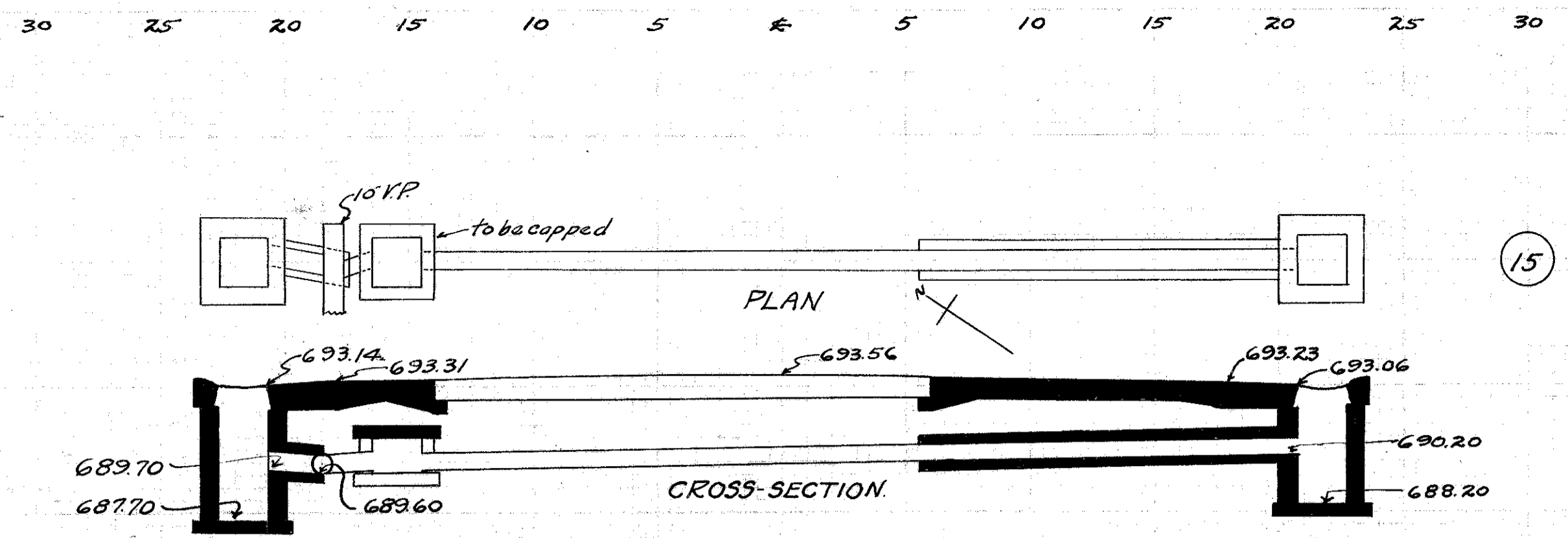


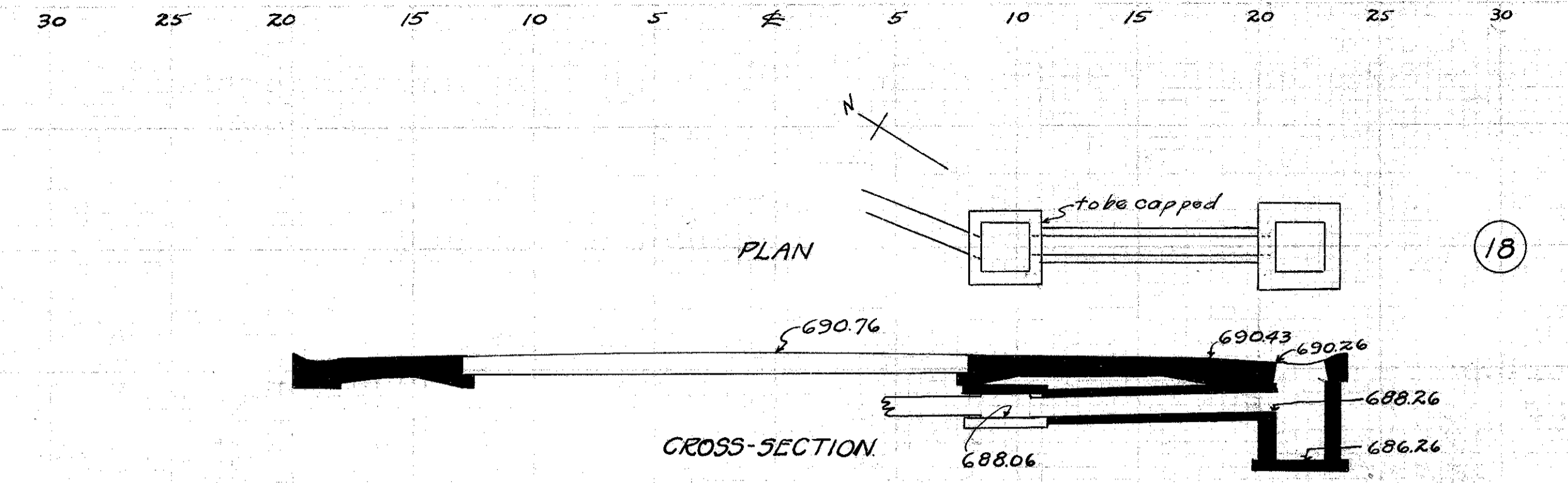
FED. RD. DIST. N°	STATE	FED. AID PROJECT	FISCAL YEAR	44
10	OHIO	519C	1929	52

S.H. N° 2 Sec. G, H, Mentor
LAKE COUNTY



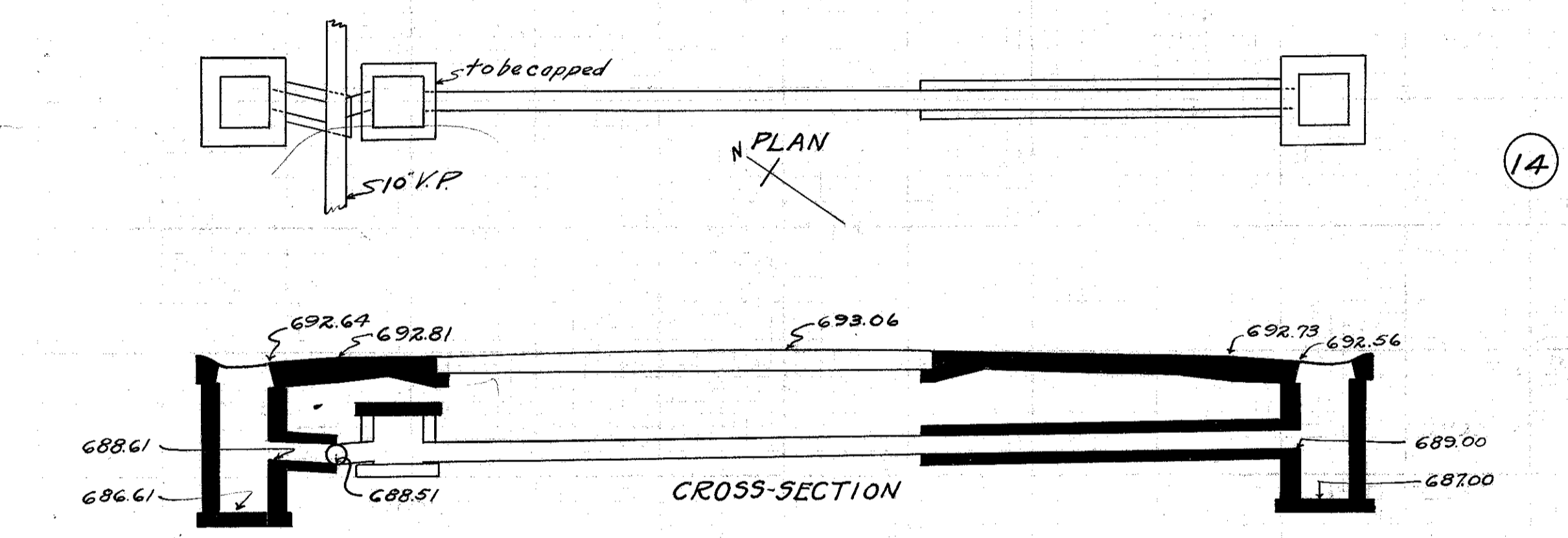
CULVERT DATA
 Type Std. V.S. Pene. Dr. #300
 Size 10'x20'
 Work Req: Extend present culv. to R with 10'x16' V.Pene. culv. Build C.B. on R & L. On L connect to present sewer with 10'x4' V.Pene. Cap old I.B. on L.
 Drawn by Beebe & Plummer
 Date 2-19-29

EST. QUANTITIES
 Exc. 4.4 cu. yds.
 Con. 1-8 1.7 cu. yds.
 Con. 1-5 1/2 (precast cap) 0.2 cu. yds.
 Reinf. Steel 2.2 lbs.
 10' V.P. 2.0 lin. ft.
 C.B. (old covers reset) (R & L) 2
 Sta. 215+98



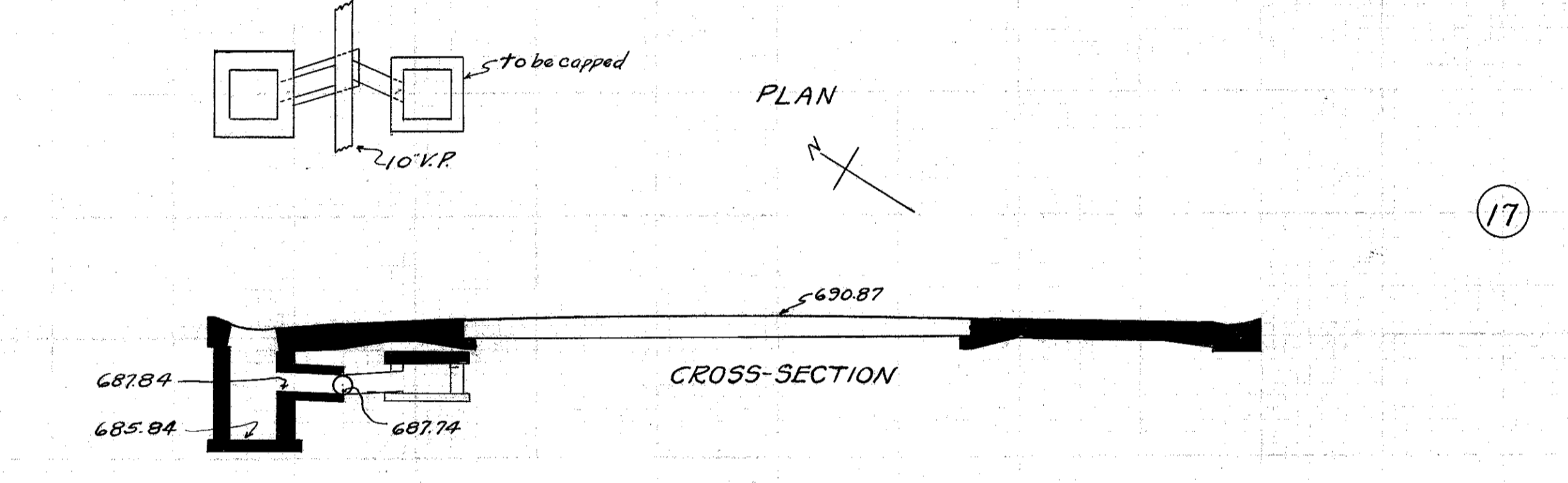
CULVERT DATA
 Type Std. V.S. Pene. Dr. #300
 Size 10'x10'
 Work Req: Extend present culv. to R with 10'x10' V.Pene. culv. Build C.B. on R. Cap old I.B. on R.
 Drawn by Beebe & Plummer
 Date 2-19-29

EST. QUANTITIES
 Exc. 1.7 cu. yds.
 Con. 1-8 0.4 cu. yds.
 Con. 1-5 1/2 (precast cap) 0.2 cu. yds.
 Reinf. Steel 2.2 lbs.
 10' V.P. 1.0 lin. ft.
 C.B. (old covers reset) (R) 1
 Sta. 226+79



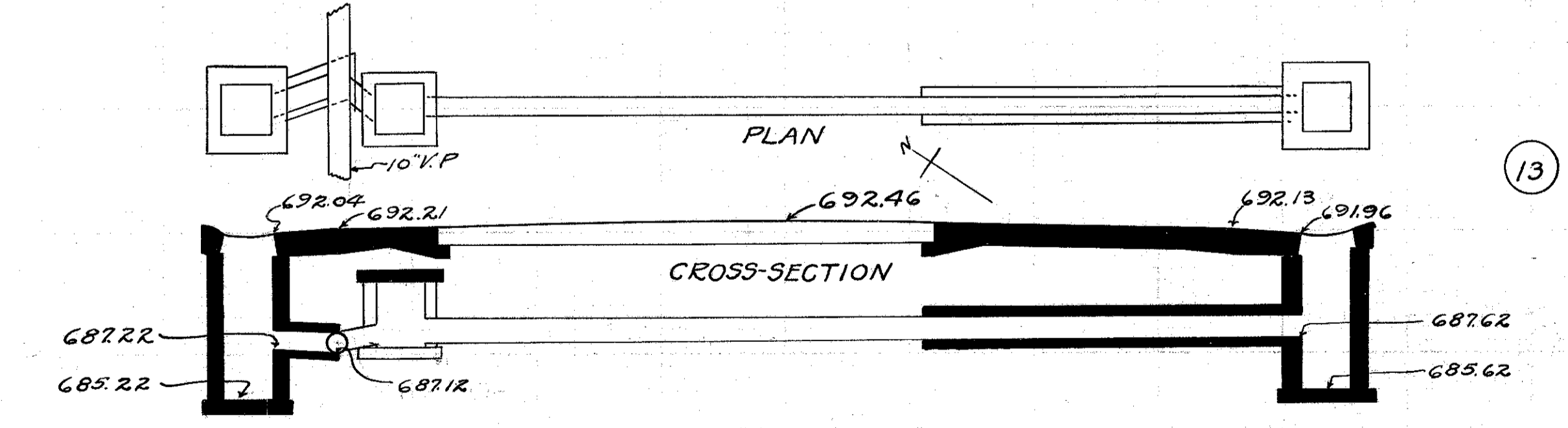
CULVERT DATA
 Type Std. V.S. Pene. Dr. #300
 Size 10'x20'
 Work Req: Extend present culv. to R with 10'x16' V.Pene. culv. Build C.B. on R & L. On L connect to present sewer with 10'x4' V.Pene. Cap old I.B. on L.
 Drawn by Beebe & Plummer
 Date 2-19-29

EST. QUANTITIES
 Exc. 5.3 cu. yds.
 Con. 1-8 1.7 cu. yds.
 Con. 1-5 1/2 (precast) 0.2 cu. yds.
 Reinf. Steel 2.2 lbs.
 10' V.P. 2.0 lin. ft.
 C.B. (old covers reset) (R & L) 2
 Sta. 213+58



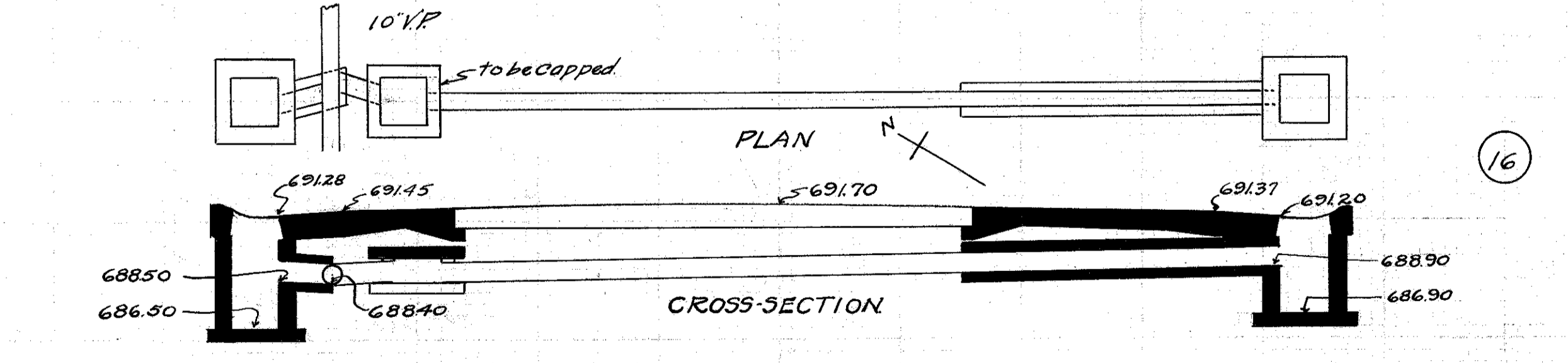
CULVERT DATA
 Type Std. V.S.P. Dr. #300
 Size 10'x4'
 Work Req: Build C.B. on L. On L connect to sewer with 10'x4' V.Pene. Cap old I.B. on L.
 Drawn by Beebe & Plummer
 Date 2-20-29

EST. QUANTITIES
 Exc. 1.5 cu. yds.
 Con. 1-8 0.7 cu. yds.
 Con. 1-5 1/2 (precast cap) 0.2 cu. yds.
 Reinf. Steel 2.2 lbs.
 10' V.P. 1.0 lin. ft.
 C.B. (old covers reset) (R) 1
 Sta. 226+33



CULVERT DATA
 Type Std. V.S. Pene. Dr. #300
 Size 10'x20'
 Work Req: Extend present culv. to R with 10'x16' V.Pene. culv. Build C.B. on R & L. On L connect to present sewer with 10'x4' V.Pene. Cap old I.B. on L.
 Drawn by Beebe & Plummer
 Date 2-19-29

EST. QUANTITIES
 Exc. 5.8 cu. yds.
 Con. 1-8 1.7 cu. yds.
 Con. 1-5 1/2 (precast cap) 0.2 cu. yds.
 Reinf. Steel 2.2 lbs.
 10' V.P. 2.0 lin. ft.
 C.B. (old covers reset) (R & L) 2
 Sta. 210+58



CULVERT DATA
 Type Std. V.S. Pene. Dr. #300
 Size 10'x18'
 Work Req: Extend present culv. to R with 10'x14' V.Pene. culv. Build C.B. on R & L. On L connect to present sewer with 10'x4' V.Pene. Cap old I.B. on L.
 Drawn by Beebe & Plummer
 Date 2-20-29

EST. QUANTITIES
 Exc. 3.0 cu. yds.
 Con. 1-8 1.7 cu. yds.
 Con. 1-5 1/2 (precast cap) 0.2 cu. yds.
 Reinf. Steel 2.2 lbs.
 10' V.P. 1.8 lin. ft.
 C.B. (old covers reset) (R & L) 2
 Sta. 222+99