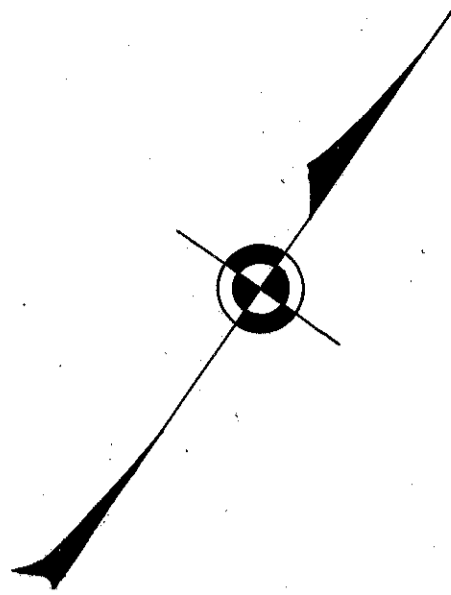


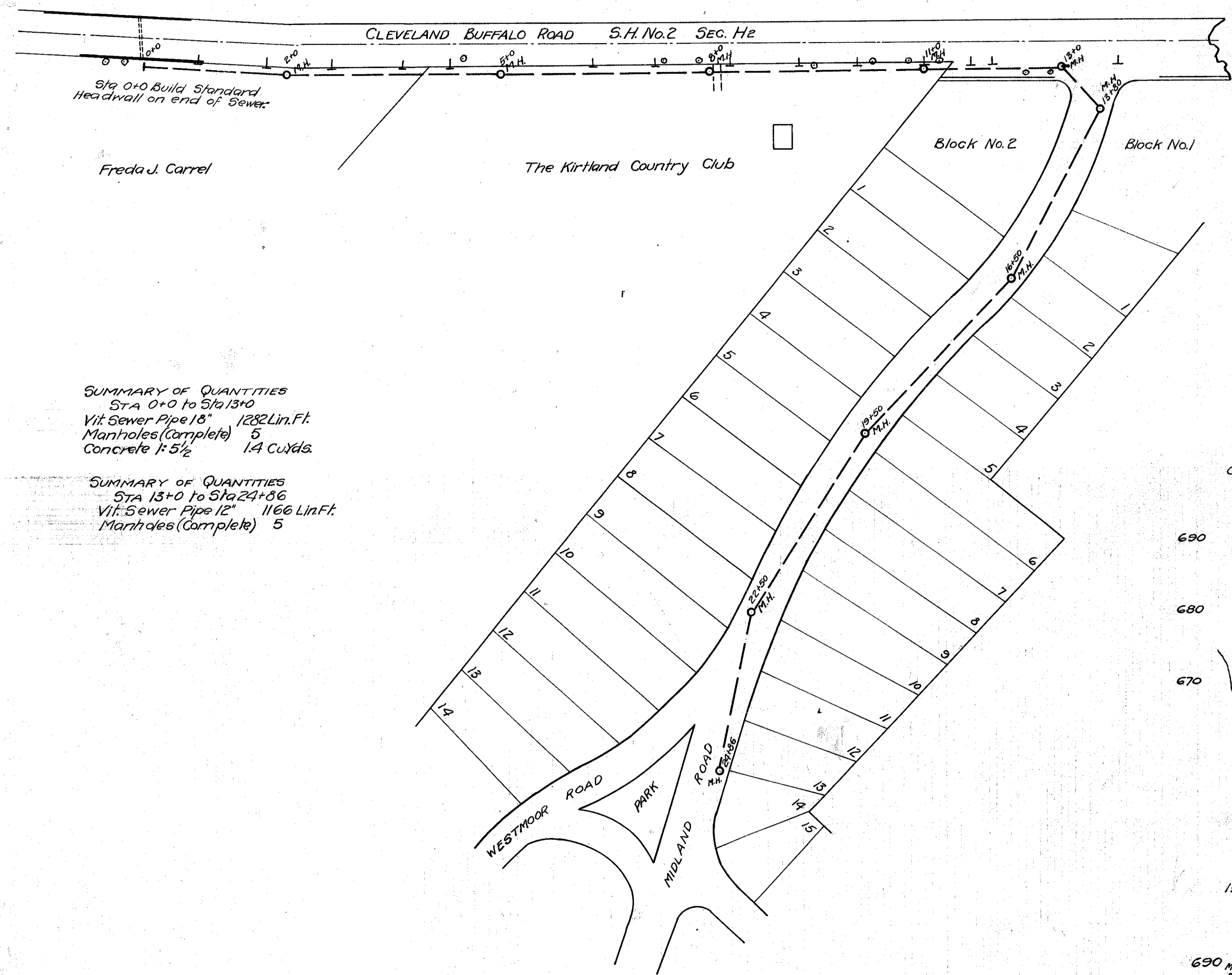
FED.AID DIST. NO.	STATE	FED.AID PROJECT	FISCAL YEAR
	OHIO		

3H.(I.C.H.)2 SEC. H2  
LAKE COUNTY

Note: Sewer from Sta 0+0 to Sta 13+0 to be constructed by the STATE.  
Sewer from Sta 13+0 to Sta 24+86 to be constructed by the COUNTY.



Manholes indicated thus



**SUMMARY OF QUANTITIES**  
STA 0+0 to Sta 13+0  
Vit. Sewer Pipe 18" 1282 Lin. Ft.  
Manholes (Complete) 5  
Concrete 1: 5 1/2

**SUMMARY OF QUANTITIES**  
STA 13+0 to Sta 24+86  
Vit. Sewer Pipe 12" 1166 Lin. Ft.  
Manholes (Complete) 5

