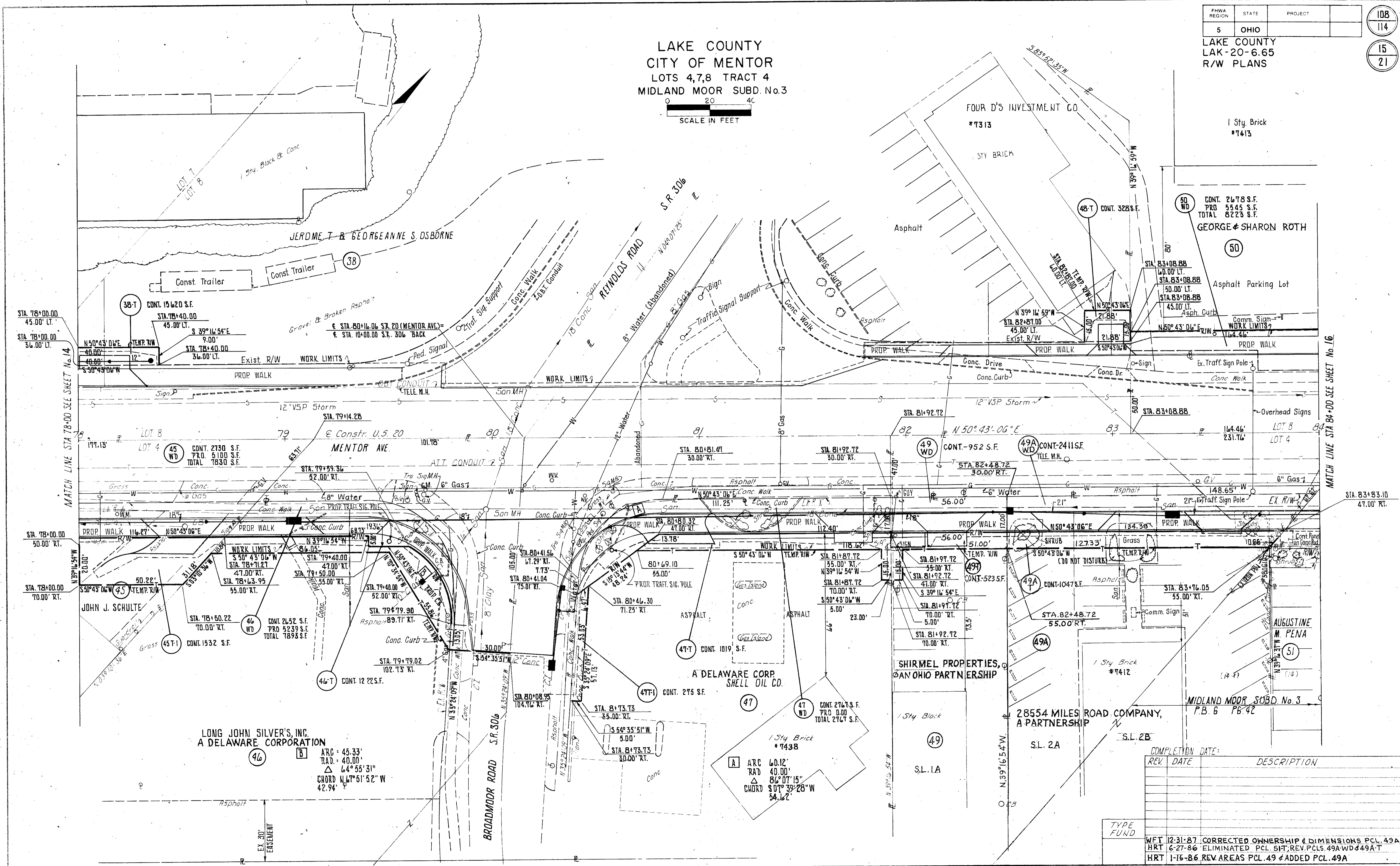
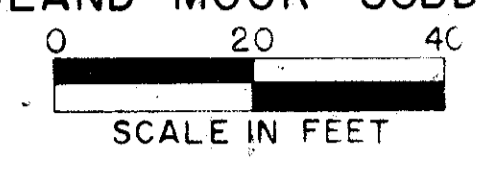


LAKE COUNTY
CITY OF MENTOR
LOTS 4,7,8 TRACT 4
MIDLAND MOOR SUBD. No.3



LONG JOHN SILVER'S, INC.
A DELAWARE CORPORATION

ARC = 45.33'
RAD. = 40.00'
Δ = 64° 55' 31"
CHORD N 67° 51' 52" W
42.94'

COMPLETION DATE:

REV	DATE	DESCRIPTION

TYPE FUND

WFT	12-31-87	CORRECTED OWNERSHIP & DIMENSIONS PCL. 49A
HRT	6-27-86	ELIMINATED PCL. 51T, REV. PCL. 49AWD & 49AT
HRT	1-16-86	REV. AREAS PCL. 49 & ADDED PCL. 49A