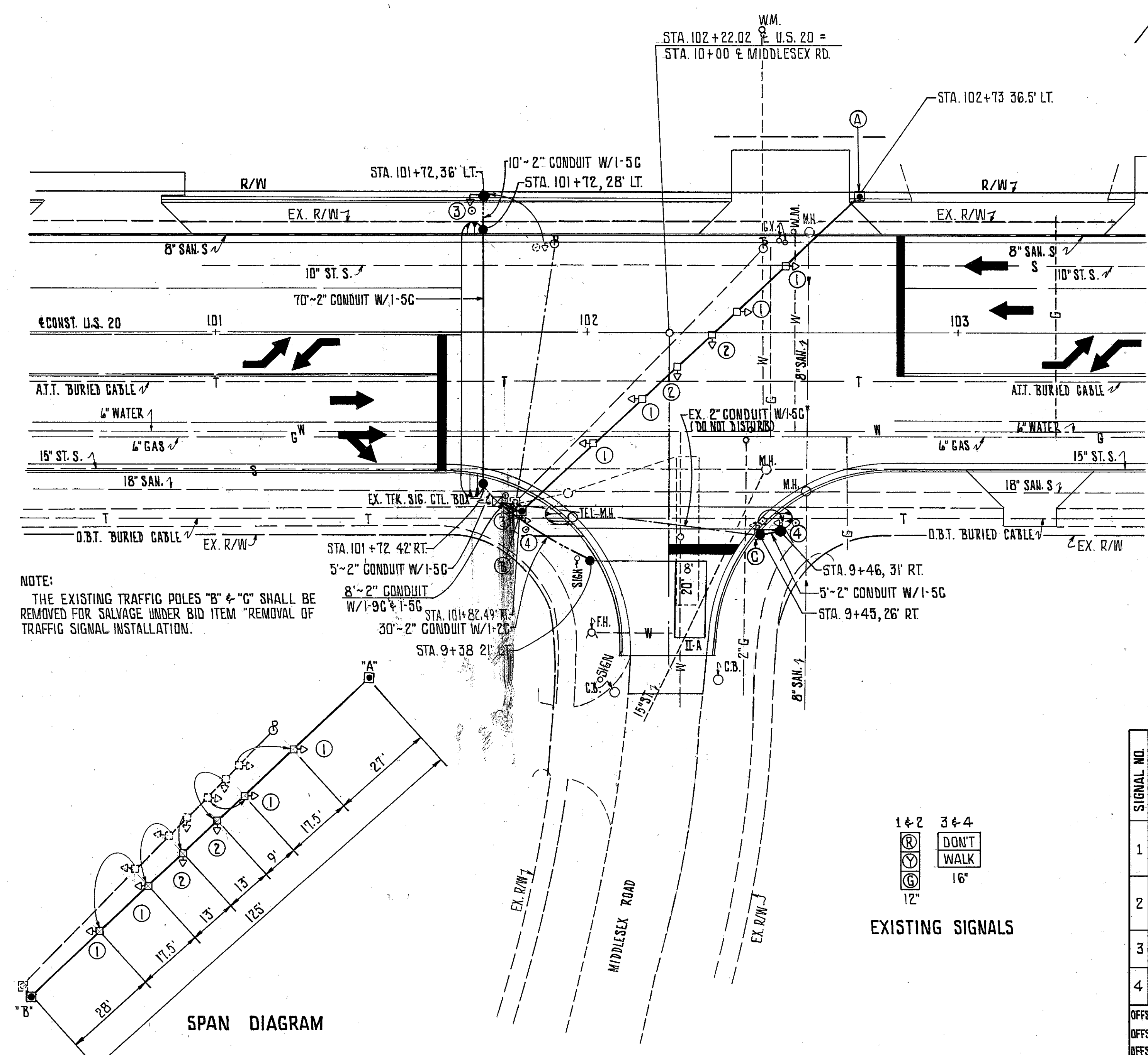
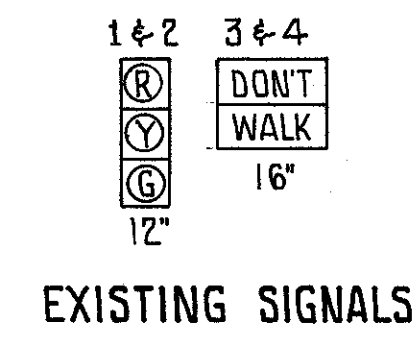
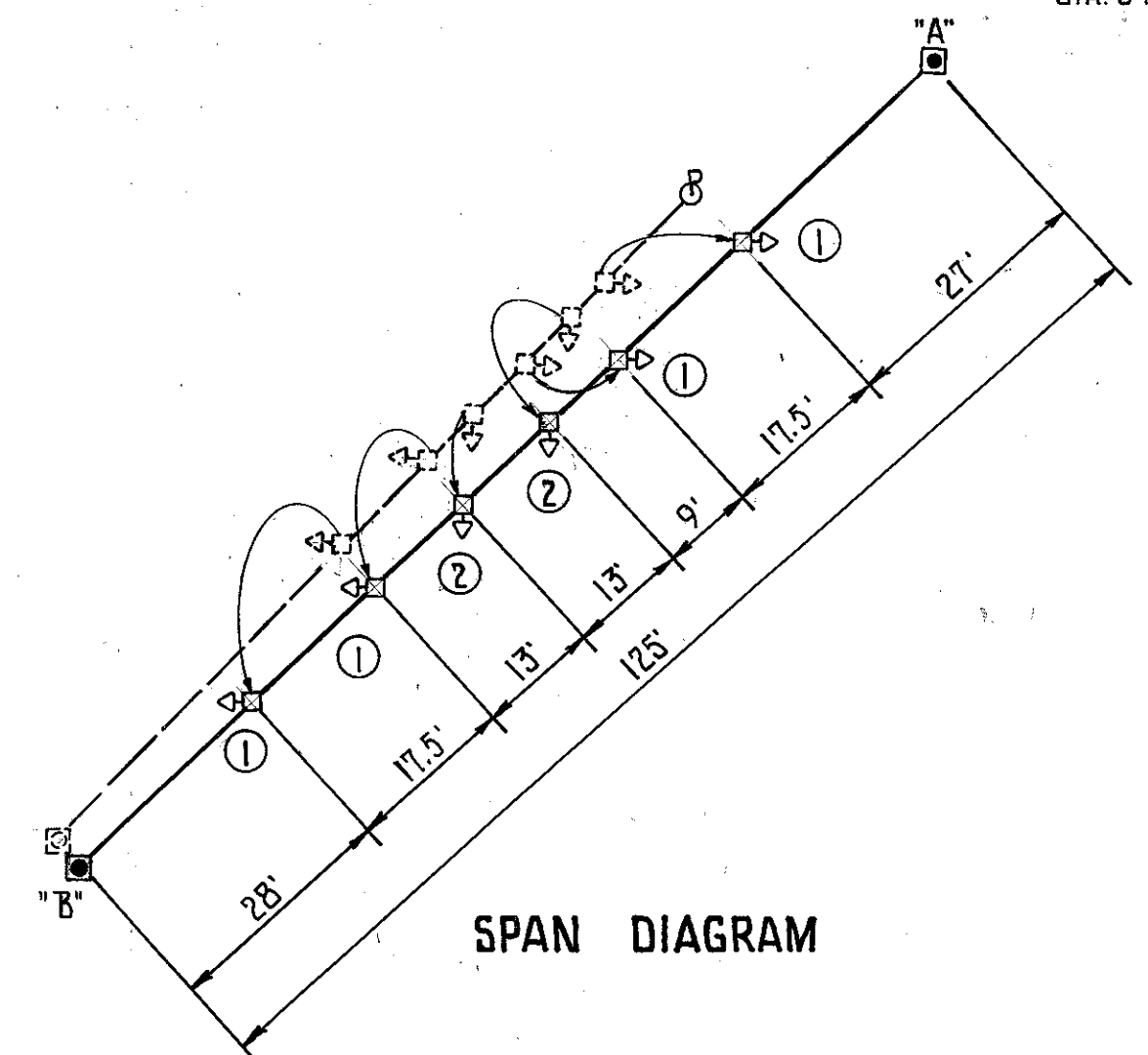


CALC: PGB 12-82  
CHK: RG 12-82

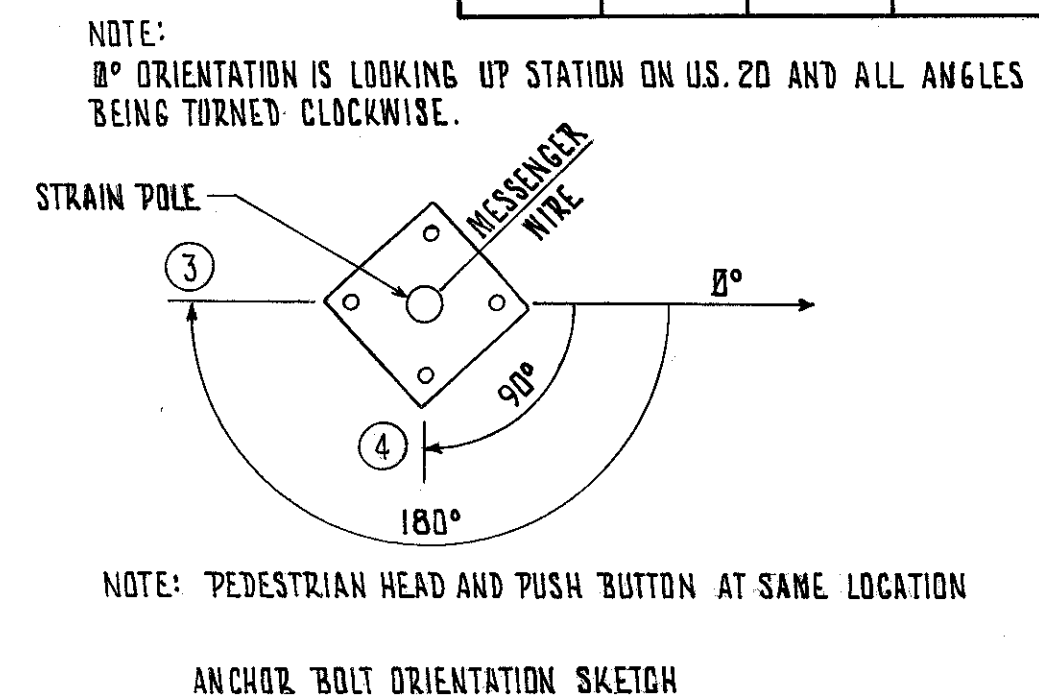


NOTE:  
THE EXISTING TRAFFIC POLES "B" & "C" SHALL BE REMOVED FOR SALVAGE UNDER BID ITEM "REMOVAL OF TRAFFIC SIGNAL INSTALLATION."

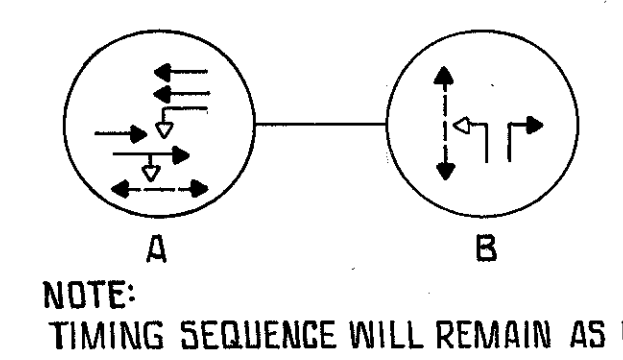
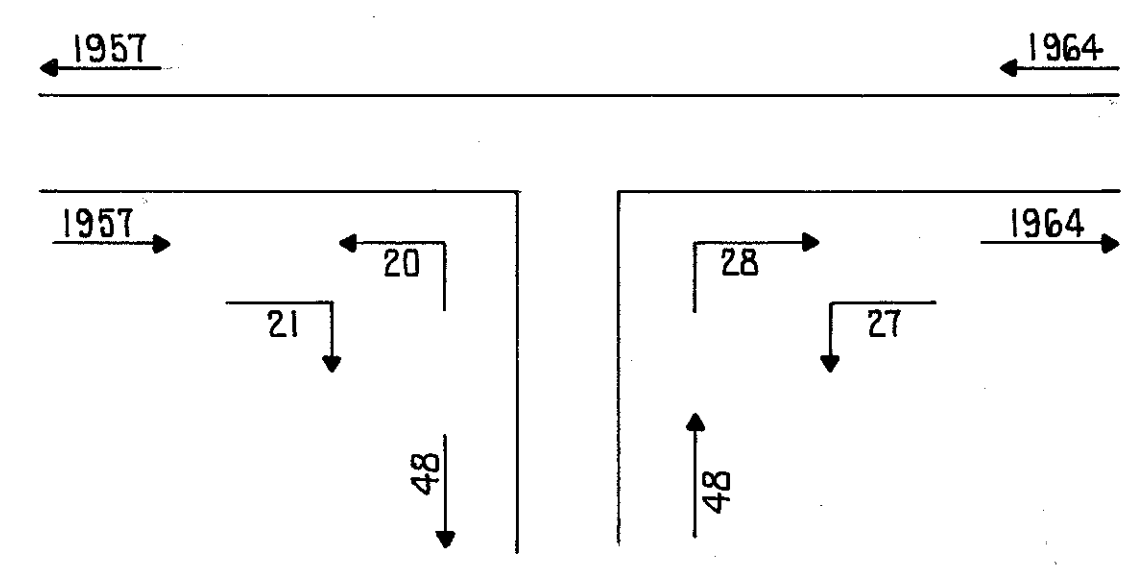
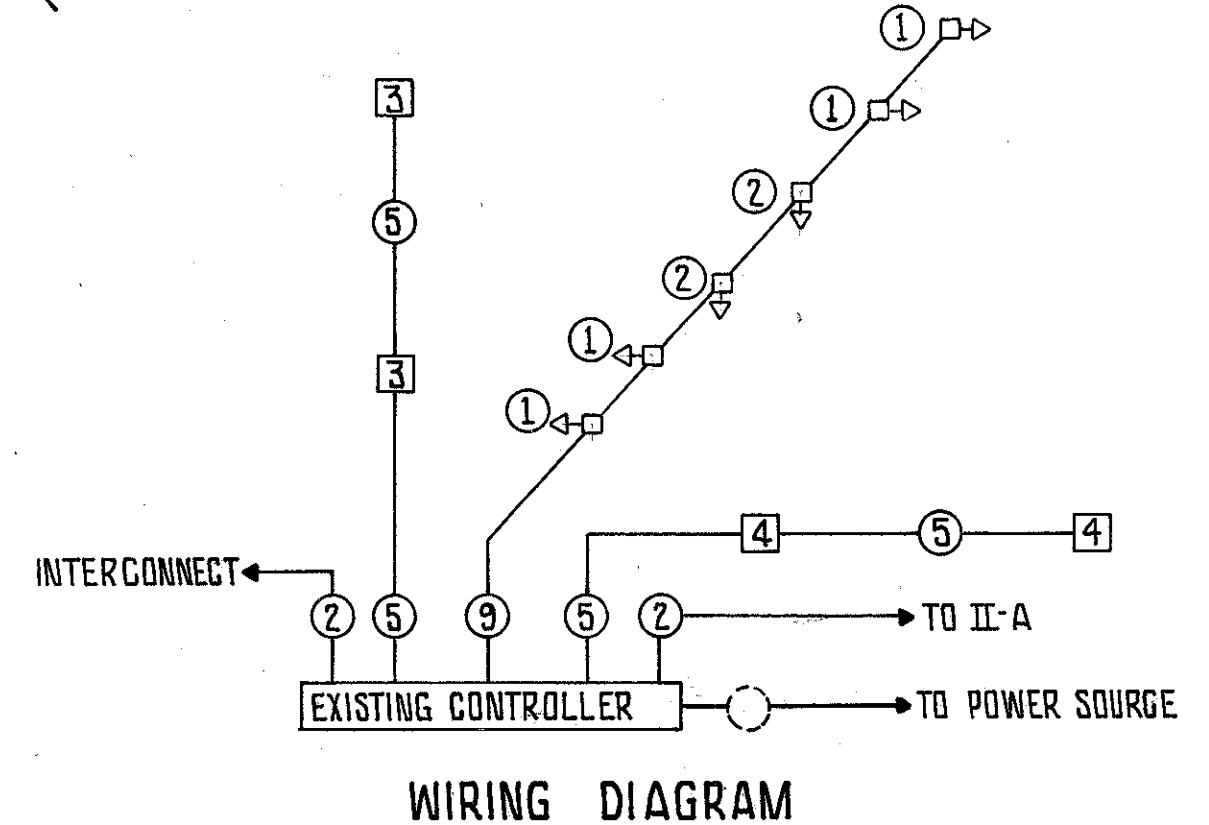
QUANTITY	UNIT	ITEM	DESCRIPTION
4	EACH	625	18" PULL BOX, CONCRETE, T13.08
4	EACH	625	GROUND ROD
128	L.F.	625	CONDUIT, 2" T13.04
128	L.F.	625	TRENCH
6	EACH	632	RE-USE OF VEHICULAR SIGNAL HEAD
4	EACH	632	RE-USE OF PEDESTRIAN SIGNAL HEAD
4	EACH	632	RE-USE OF PEDESTRIAN PUSH BUTTON
56	L.F.	632	LOOP DETECTOR PAVEMENT CUTTING
6.0	C.Y.	632	CONCRETE FOR ANCHOR BASE FOUNDATIONS
2	EACH	632	STRAIN POLE TYPE TC-81.10, DESIGN 1, 30 FEET
2	EACH	632	PEDESTAL, 8 FEET
2	EACH	632	CABLE SUPPORT ASSEMBLY
125	L.F.	632	MESSENGER WIRE, 7 STRAND, 1/16" DIA. WITH ACCESSORIES
224	L.F.	632	SIGNAL CABLE, 5/C NO. 14 AWG
165	L.F.	632	SIGNAL CABLE 9/C NO. 14 AWG
1	EACH	632	POWER SERVICE, AS PER PLAN
25	L.F.	632	POWER CABLE 3/C NO. 8 AWG
168	L.F.	632	LOOP DETECTOR WIRE, TYPE "E"
40	L.F.	632	LOOP DETECTOR LEAD-IN CABLE
1	EACH	632	REMOVAL OF TRAFFIC SIGNAL INSTALLATION
1	EACH	632	2" CONDUIT RISER
2	EACH	632	CONNECTION TO EXISTING CONDUIT



SIGNAL NO.	DIAL SETTINGS (SECONDS)						
	5	2	3	2	7	8	3
1	W						
2	W						
3	W						
4	W						
OFFSET 1	ALL OFFSETS TO REMAIN UNCHANGED						
OFFSET 2							
OFFSET 3							



- LEGEND**
- EXISTING PULL BOX
  - PROPOSED PULL BOX
  - ⊠ EXISTING CONTROLLER
  - ⊠ EXISTING SIGNAL HEAD
  - ⊠ EXISTING SIGNAL HEAD TO BE RELOCATED
  - ⊠ EXISTING STRAIN POLE
  - ⊠ PROPOSED STRAIN POLE
  - PEDESTAL, 8 FEET
  - ⊠ EXISTING PEDESTRIAN HEAD
  - ⊠ RELOCATED PEDESTRIAN HEAD
  - ⊠ EXISTING PEDESTRIAN PUSH BUTTON
  - ⊠ RELOCATED PEDESTRIAN PUSH BUTTON
  - EXISTING MESSENGER WIRE
  - PROPOSED MESSENGER WIRE
  - EXISTING LOOP DETECTOR
  - PROPOSED LOOP DETECTOR
  - EXISTING UNDERGROUND CONDUIT
  - PROPOSED UNDERGROUND CONDUIT



NOTE:  
TIMING SEQUENCE WILL REMAIN AS IS