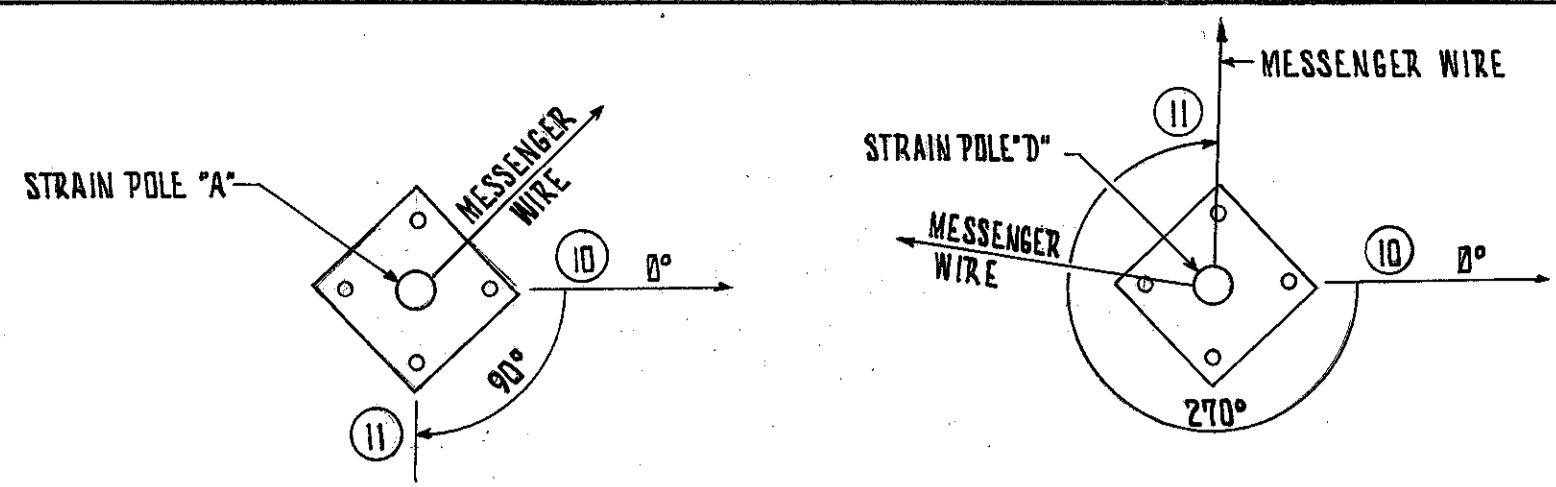
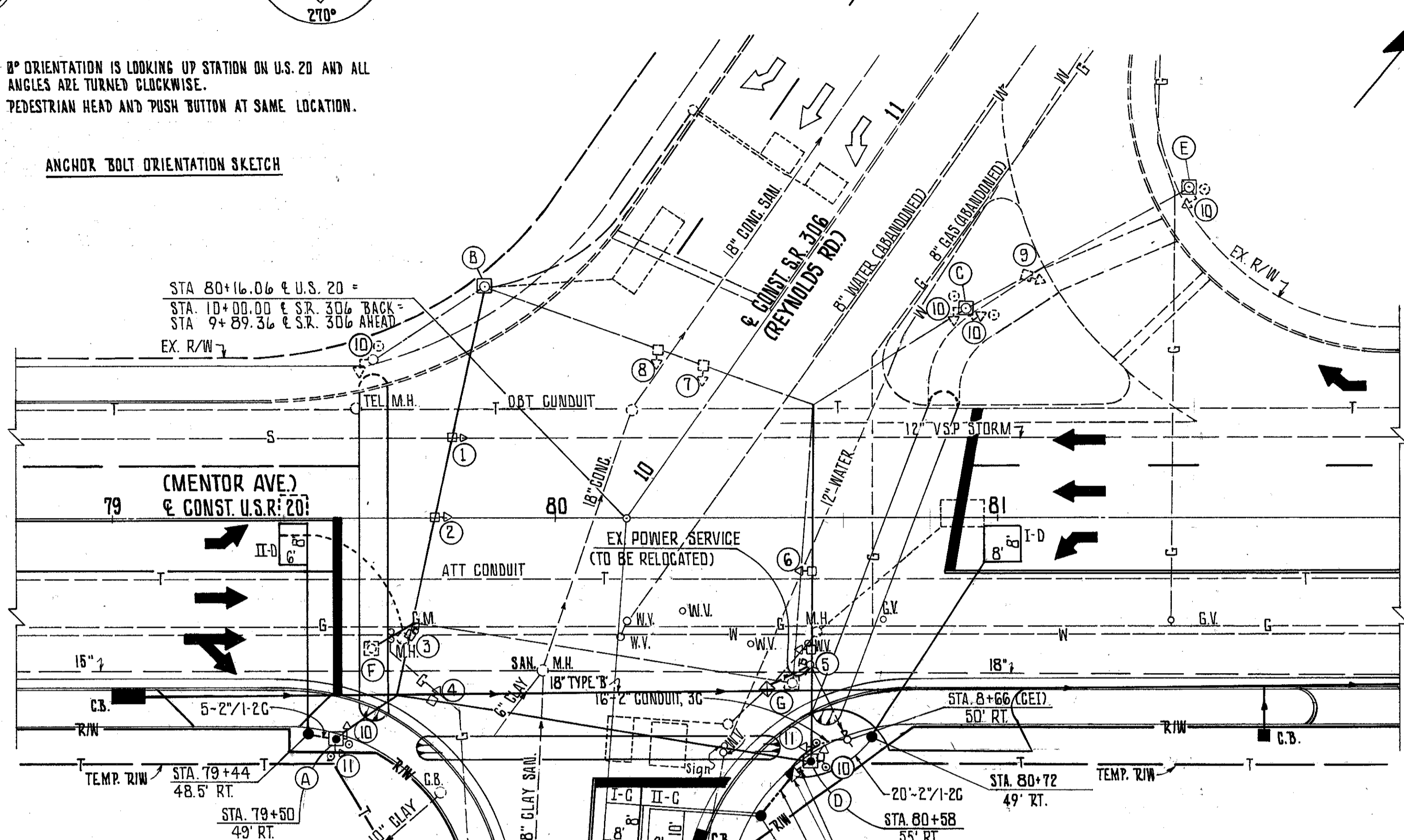


CALC: PCB 12-82
 CHK: RG 12-82

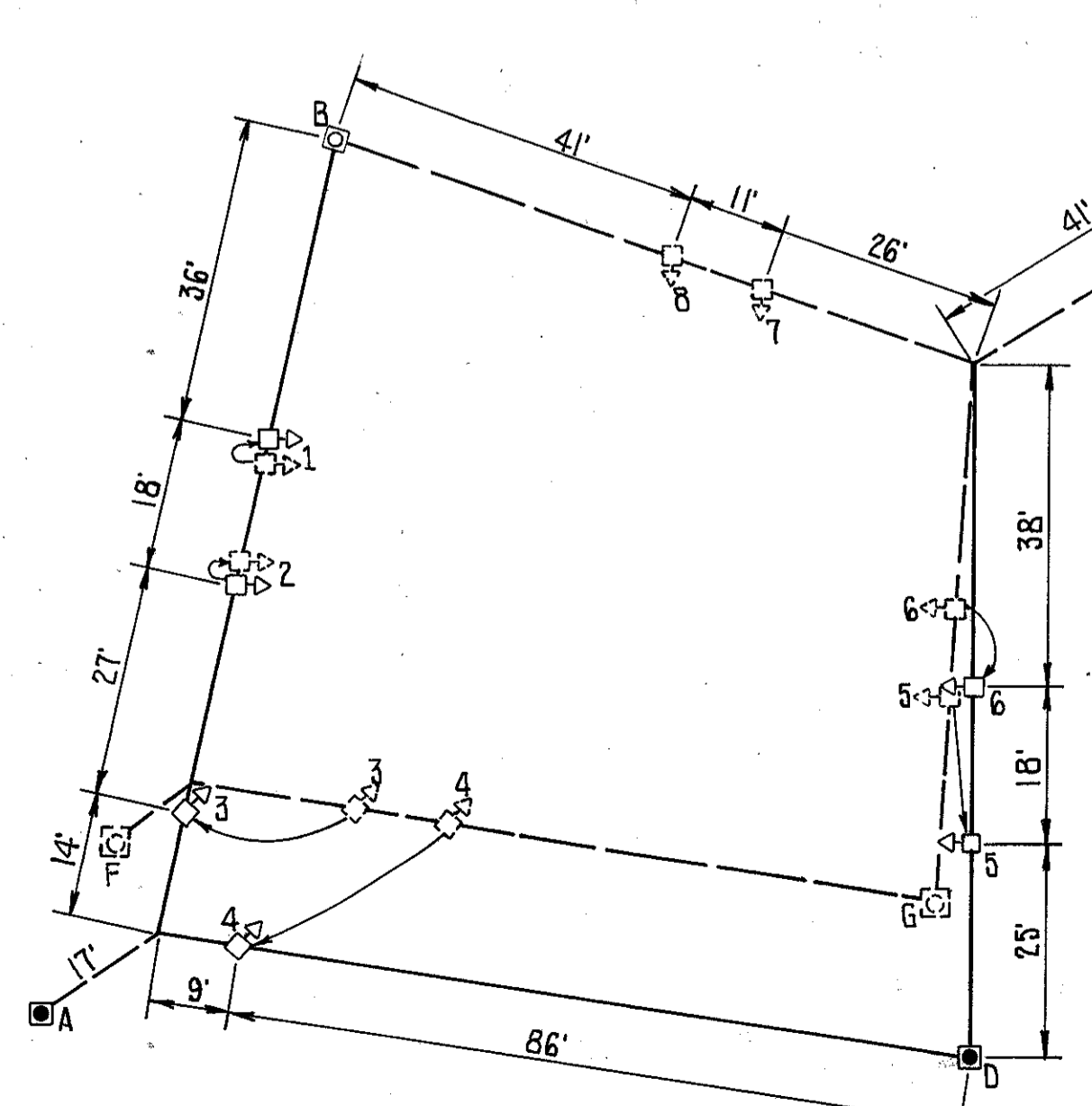


NOTE: 0° ORIENTATION IS LOOKING UP STATION ON U.S. 20 AND ALL ANGLES ARE TURNED CLOCKWISE.
 NOTE: PEDESTRIAN HEAD AND PUSH BUTTON AT SAME LOCATION.

ANCHOR BOLT ORIENTATION SKETCH



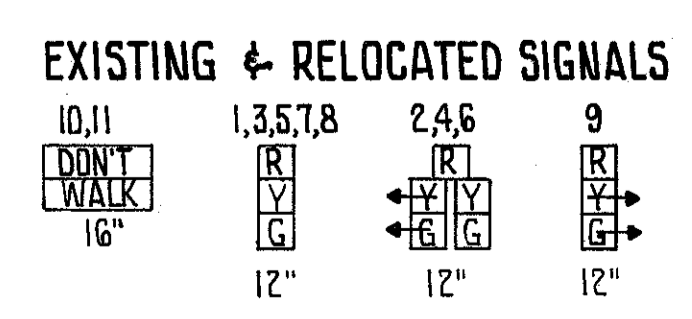
NOTE:
 THE TWO EXISTING STRAIN POLES (F & G) SHALL BE REMOVED FOR SALVAGE UNDER BID ITEM "REMOVAL OF TRAFFIC SIGNAL INSTALLATION".



SPAN DIAGRAM

SIGNAL POLES
 B, C & E EXISTING TO REMAIN
 F & G EXISTING TO BE REMOVED
 A & D NEW

SIGNAL HEADS
 7, 8 & 9 EXISTING TO REMAIN
 1 - 6 EXISTING TO BE RELOCATED



WIRING DIAGRAM

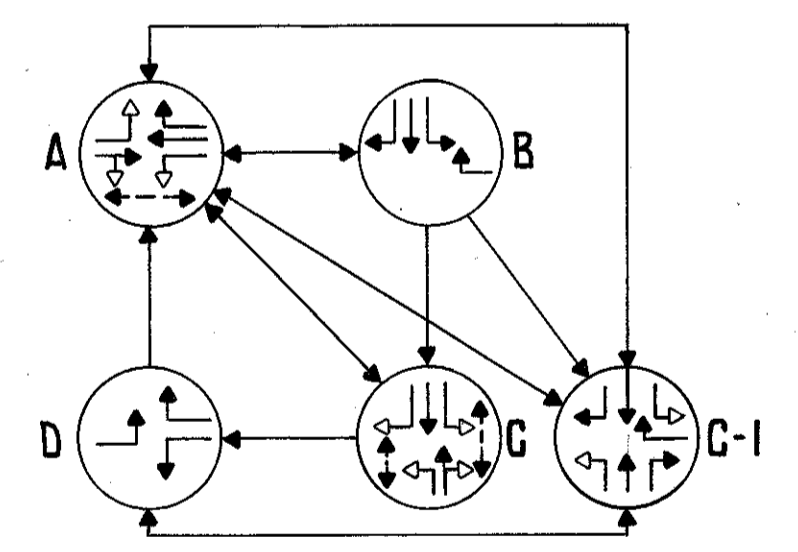
COLOR SEQUENCE CHART

SIGNAL NO.	DIAL SETTINGS												
	1	2	3	4	5	6	7	8	9	10	11	12	
1	17	7	3	2	6	3	2	1	7	3	2	6	3
2	1	2	3	4	5	6	7	8	9	10	11	12	
3													
4													
5													
6													
7													
8													
9													
10													
11													

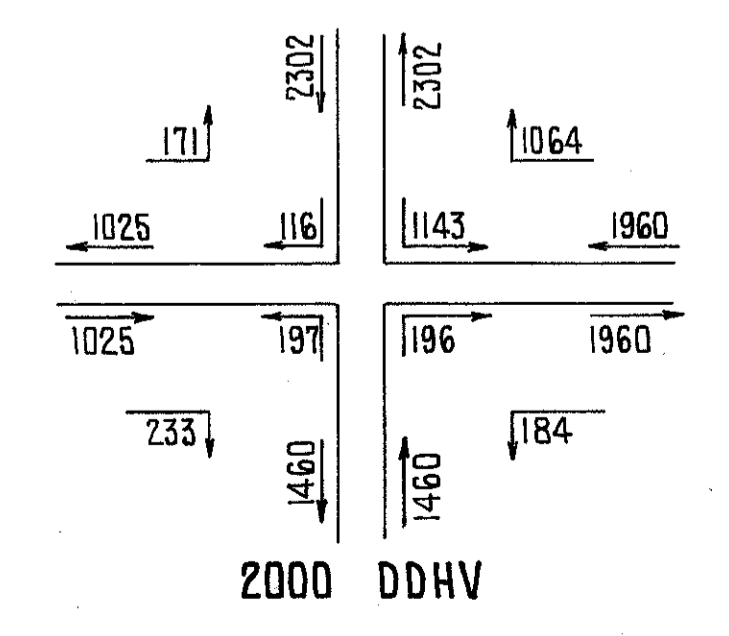
(1) # 8 TO # 6 CLEARANCE INTERVAL
 (2) # 8 TO # A CLEARANCE INTERVAL OR # 8 TO # D
 "F" FLASHING "DON'T WALK"
 DW - DON'T WALK
 W - WALK

QUANTITY	UNIT	ITEM	DESCRIPTION
3	EACH	625	18" PULL BOX, CONCRETE, 713.08.
2	EACH	625	GROUND ROD
53	L.F.	625	CONDUIT, 2" 713.04.
5	L.F.	625	CONDUIT, 3" 713.04
58	L.F.	625	TRENCH
1	EACH	861	RE-USE OF CONTROLLER AND CABINET
1.98	G.Y.	861	CONCRETE FOR CABINET FOUNDATION, AS PER PLAN.
1	EACH	632	2" CONDUIT RISER.
2	EACH	632	STRAIN POLE, TYPE TC-81-10, DESIGN 6, 30 FEET.
216	L.F.	632	LOOP DETECTOR PAVEMENT CUTTING.
2	EACH	632	CABLE SUPPORT ASSEMBLY.
288	L.F.	632	MESSENGER WIRE, 7 STRAND, 3/8" DIA. WITH ACCESSORIES.
32	L.F.	632	SIGNAL CABLE, 2/C NO. 14 AWG.
423	L.F.	632	SIGNAL CABLE, 5/C NO. 14 AWG.
322	L.F.	632	SIGNAL CABLE, 7/C NO. 14 AWG.
453	L.F.	632	SIGNAL CABLE, 12/C NO. 14 AWG.
616	L.F.	632	LOOP DETECTOR WIRE, TYPE "E"
998	L.F.	632	LOOP DETECTOR LEAD-IN CABLE.
60	L.F.	632	POWER CABLE, 3/C NO. 8 AWG.
1	EACH	632	POWER SERVICE, AS PER PLAN
LUMP	LUMP	632	RE-CONNECTING TELEPHONE INTERCONNECT, AS PER PLAN
1	EACH	632	REMOVAL OF TRAFFIC SIGNAL INSTALLATION.
48	G.Y.	632	CONCRETE FOR ANCHOR BASE FOUNDATIONS.
6	EACH	632	RE-USE OF VEHICULAR SIGNAL HEAD.
4	EACH	632	RE-USE OF PEDESTRIAN SIGNAL HEAD.
4	EACH	632	RE-USE OF PEDESTRIAN PUSH-BUTTON.

NOTE: THE TIMING SEQUENCE WILL REMAIN AS IS.



PHASING DIAGRAM (EXISTING)



2000 DDHV

- LEGEND**
- PROPOSED CONTROLLER
 - PROPOSED PULL BOX
 - ⊠ EXISTING CONTROLLER
 - ⊞ EXISTING SIGNAL HEAD
 - ⊞ EXISTING SIGNAL HEAD TO BE RELOCATED
 - ⊞ EXISTING STRAIN POLE TO BE REMOVED
 - ⊞ PROPOSED STRAIN POLE
 - ⊞ EXISTING STRAIN POLE TO REMAIN IN PLACE
 - ⊞ RELOCATED PEDESTRIAN HEAD
 - ⊞ EXISTING PULL BOX
 - ⊞ EXISTING PEDESTRIAN HEAD TO REMAIN IN PLACE
 - ⊞ RELOCATED PEDESTRIAN PUSH BUTTON
 - ⊞ EXISTING PEDESTRIAN PUSH BUTTON TO REMAIN IN PLACE
 - PROPOSED MESSENGER WIRE
 - EXISTING LOOP DETECTOR
 - PROPOSED LOOP DETECTOR
 - EXISTING MESSENGER WIRE
 - PROPOSED UNDERGROUND CONDUIT
 - EXISTING UNDERGROUND CONDUIT