

LAKE COUNTY
LAK-2D-C.65

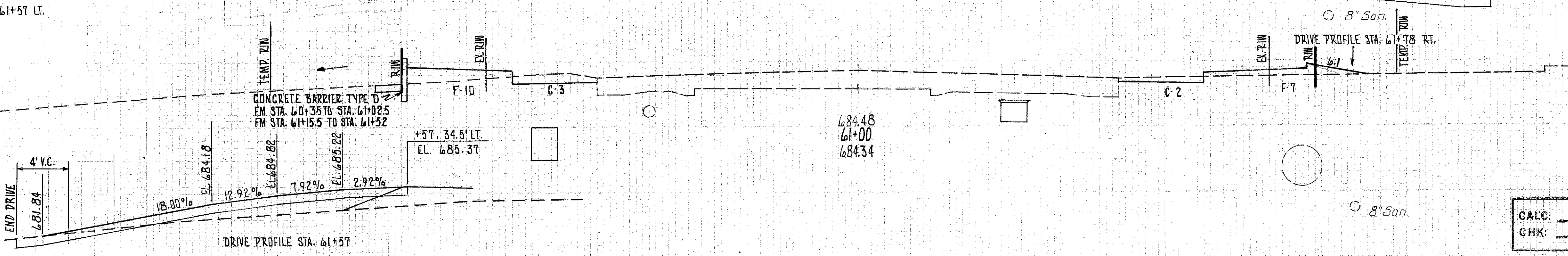
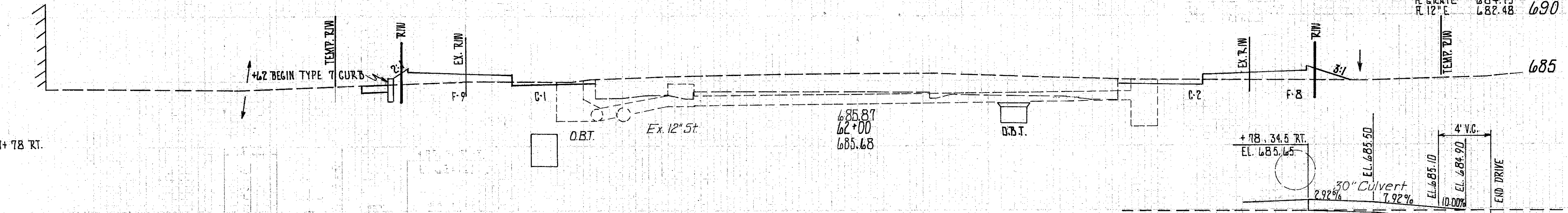
40' RT. STA. 62+25
NO. 2-2-B C.B.
R. GRATE 684.75
R. 12" E 682.48

690
685

DEDUCT FOR DRIVE STA. 61+78 RT.
(5x24) ÷ 9 = 13.3 S.Y.

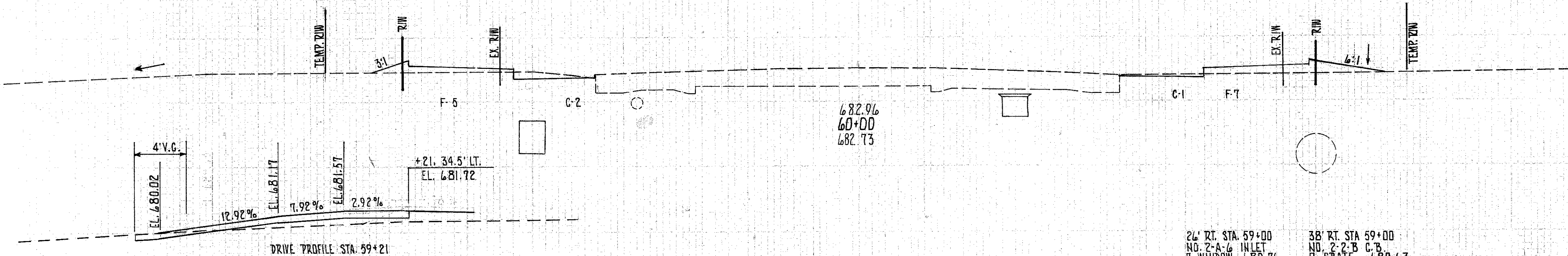
DEDUCT FOR DRIVE STA. 61+57 LT.
(2x11) ÷ 9 = 2.4 S.Y.

685
680



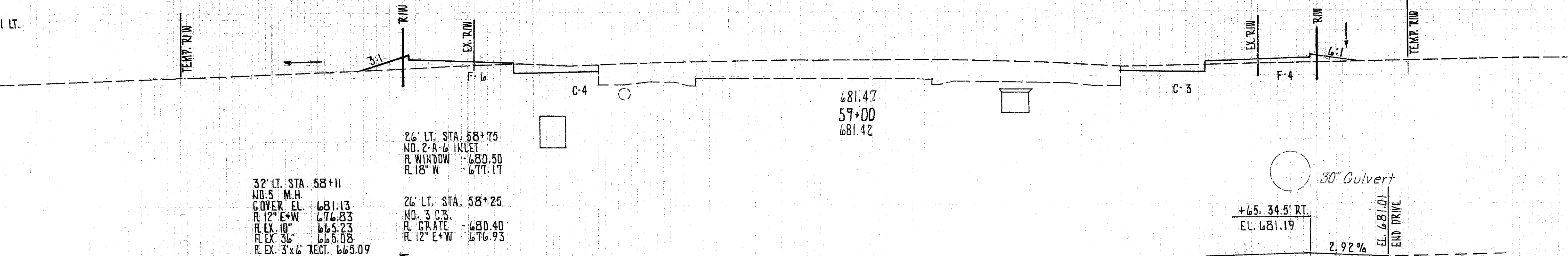
CALC: PCB 2-83
CHK: ROB 2-83

685
680



685
680

DEDUCT FOR DRIVE @ 59+21 LT.
(5x24) ÷ 9 = 13.3 S.Y.



685
680

AHEAD STA 58+50
BACK STA. 58+50

32' LT. STA. 58+11
NO. 5 M.H.
COVER EL. 681.13
R. 12" E+W 676.83
R. EX. 10" 665.23
R. EX. 36" 665.08
R. EX. 3'x6' RECT. 665.09

26' LT. STA. 58+75
NO. 2-A-6 INLET
R. WINDOW 680.50
R. 18" W 677.17

26' LT. STA. 58+25
NO. 3 C.B.
R. GRATE 680.40
R. 12" E+W 676.93

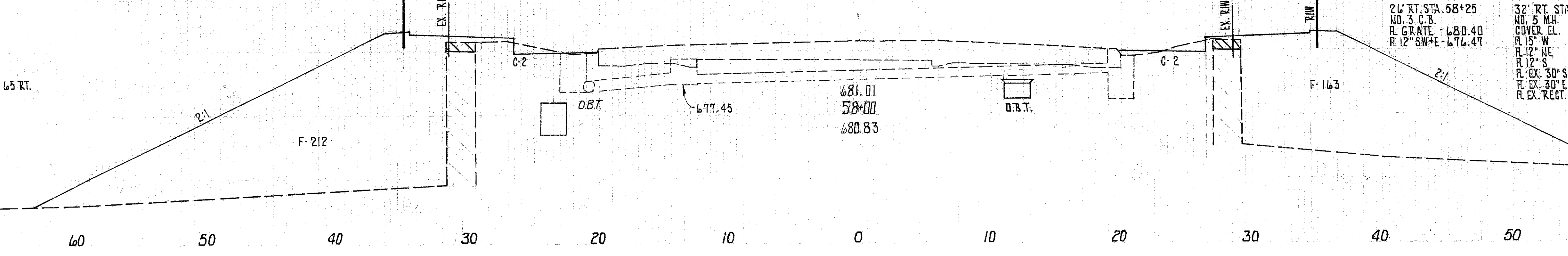
26' RT. STA. 58+25
NO. 3 C.B.
R. GRATE 680.40
R. 12" SW+E 676.47

32' RT. STA. 58+13
NO. 5 M.H.
COVER EL. 681.13
R. 15" W 676.06
R. 12" NE 676.31
R. 12" S 677.96
R. EX. 30" S 667.96
R. EX. 30" E 668.42
R. EX. RECT. 3'x6' N 667.76

60' RT. STA. 58+08
NO. 2-2-B C.B.
R. GRATE 670.25
R. 12" N 668.24

685
680

DEDUCT FOR DRIVE @ 58+65 RT.
(4x24) ÷ 9 = 10.7 S.Y.



670
57+00