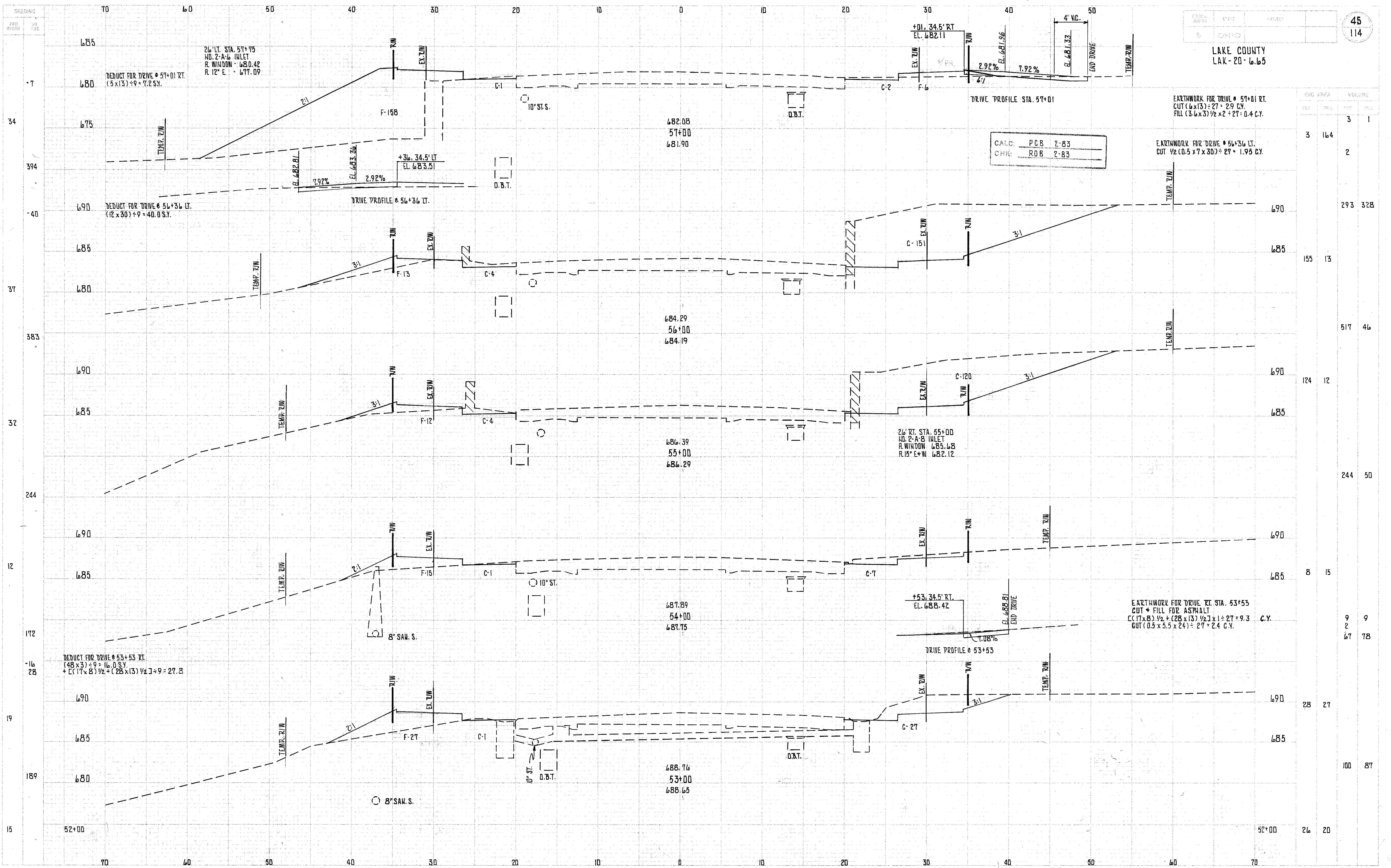


LAKE COUNTY
LAK-20-6.65



26' LT. STA. 57+75
NO. 2-A-6 INLET
R. WINDOW - 680.42
R. 12' E - 677.09

DEDUCT FOR DRIVE @ 56+36 LT.
(12 x 30) ÷ 9 = 40.0 S.Y.

+01.34.5' RT
EL. 682.11

EARTHWORK FOR DRIVE @ 57+01 RT.
CUT (6x13) ÷ 2 = 27 = 2.9 C.Y.
FILL (3.6x3) ÷ 2 x 2 = 27 = 0.4 C.Y.

CALC: PCB 2-83
CHK: ROB 2-83

EARTHWORK FOR DRIVE @ 56+36 LT.
CUT 1/2 (0.5 x 7 x 30) = 27 = 1.95 C.Y.

26' RT. STA. 55+00
NO. 2-A-8 INLET
R. WINDOW - 685.68
R. 15' E+W - 682.12

EARTHWORK FOR DRIVE RT. STA. 53+53
CUT + FILL FDB ASPHALT
C (17x8) ÷ 2 + (28x13) ÷ 2 x 1 = 27 = 9.3 C.Y.
BUT (0.5 x 3.5 x 24) = 27 = 2.4 C.Y.

DEDUCT FOR DRIVE @ 53+53 RT.
(48x3) ÷ 9 = 16.0 S.Y.
+ [(17x8) ÷ 2 + (28x13) ÷ 2] x 1 = 9 = 27.8