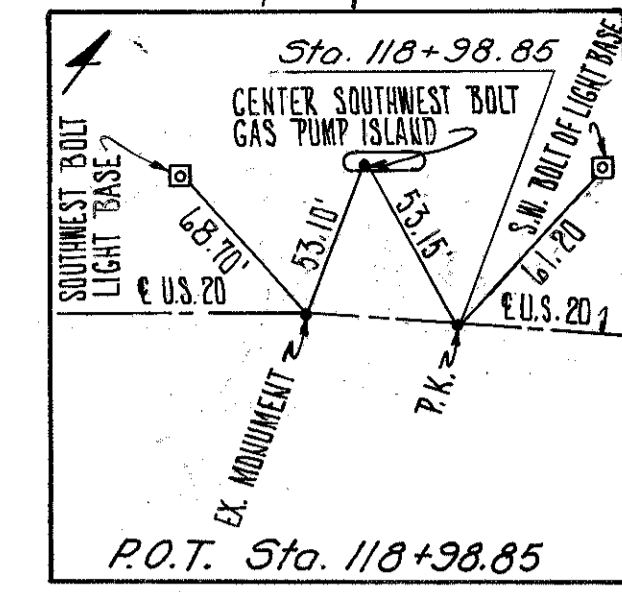


LAKE COUNTY
LAK-20-G.65

CALC: PCB 9-83
CHK: ROB 9-83

LEGEND

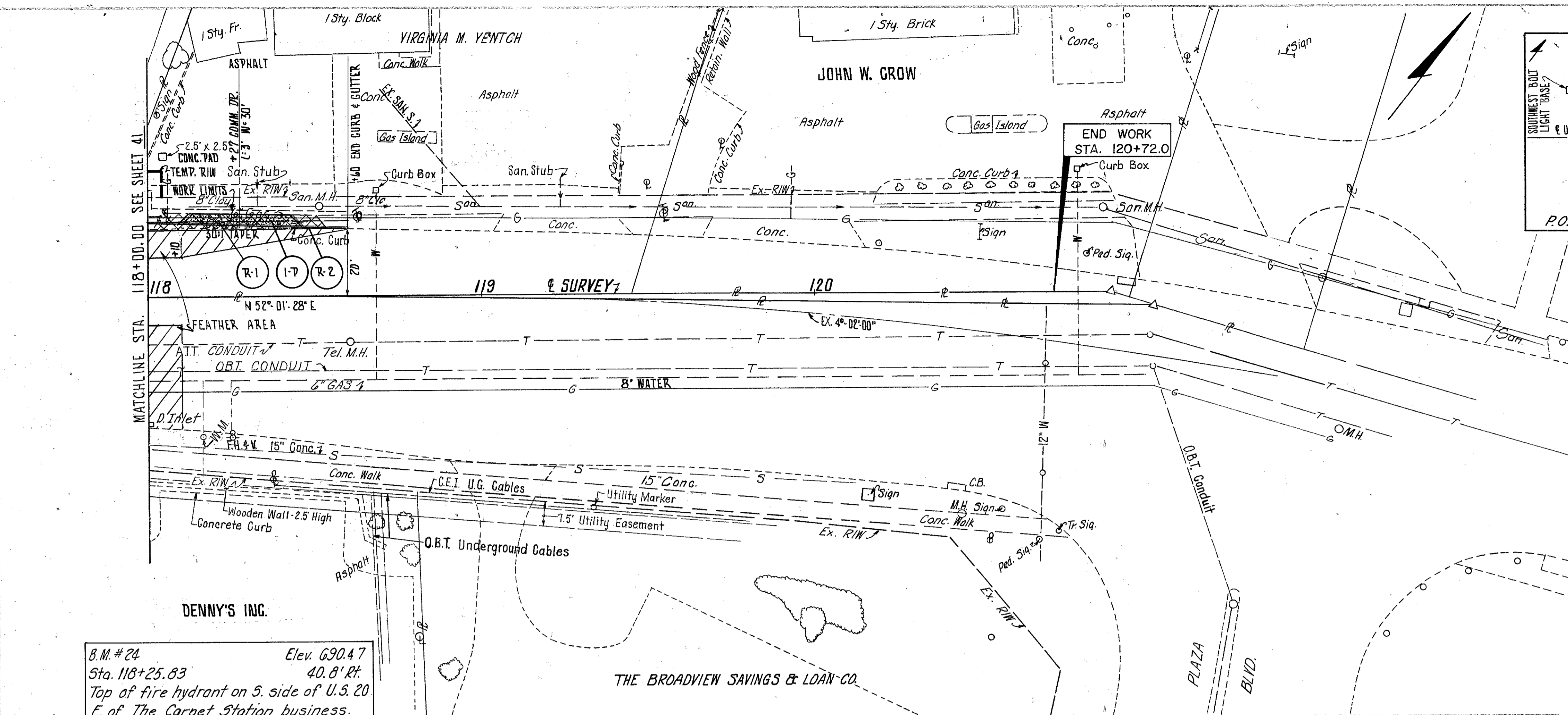
- 8" ITEM 452
- ITEM 202 - PAVEMENT REMOVED
- FEATHER AREA



CALCULATIONS
1-R $\frac{1}{2}(46+51) 4.5 \div 9 = 24.25$ S.Y.

- NOTES:
- FOR PAVEMENT, DRIVE, SIDEWALK, CURB + GUTTER QUANTITIES SEE CALCULATIONS SHEET NO. 18.
 - FOR CROSS SECTIONS SEE SHEET NO. 61.
 - FOR DRIVE DETAIL SEE SHEET NO. 22.
 - 1-P PROFILE SHALL BE PLACED TO MEET THE EXISTING DRIVE.

REF.	STATION TO STATION	SIDE	202	202				
			PAVEMENT REMOVED	CURB REMOVED				
			S.Y.	L.F.				
R-1	118+02 TO 118+53	LT.	24.2					
R-2	118+00 TO 118+60	LT.		60				
TOTALS			24	60				



B.M. #24 Elev. 690.47
Sta. 118+25.83 40.8' Rt.
Top of fire hydrant on S. side of U.S. 20
E. of The Carpet Station business.

