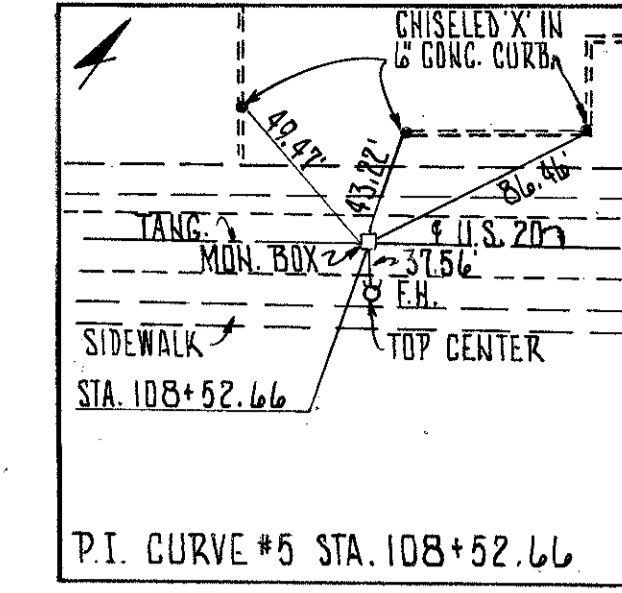


LAKE COUNTY
LAK-20-6.65



CURVE DATA
 P.I. Sta. 108+52.66
 P.C. Sta. 108+20.25
 P.T. Sta. 108+85.06
 $\Delta = 0^\circ 19' 26''$
 $D_c = 0^\circ 30' 00''$
 $R = 11459.16'$
 $L = 64.81'$
 $T = 32.41'$
 $E = 0.05'$

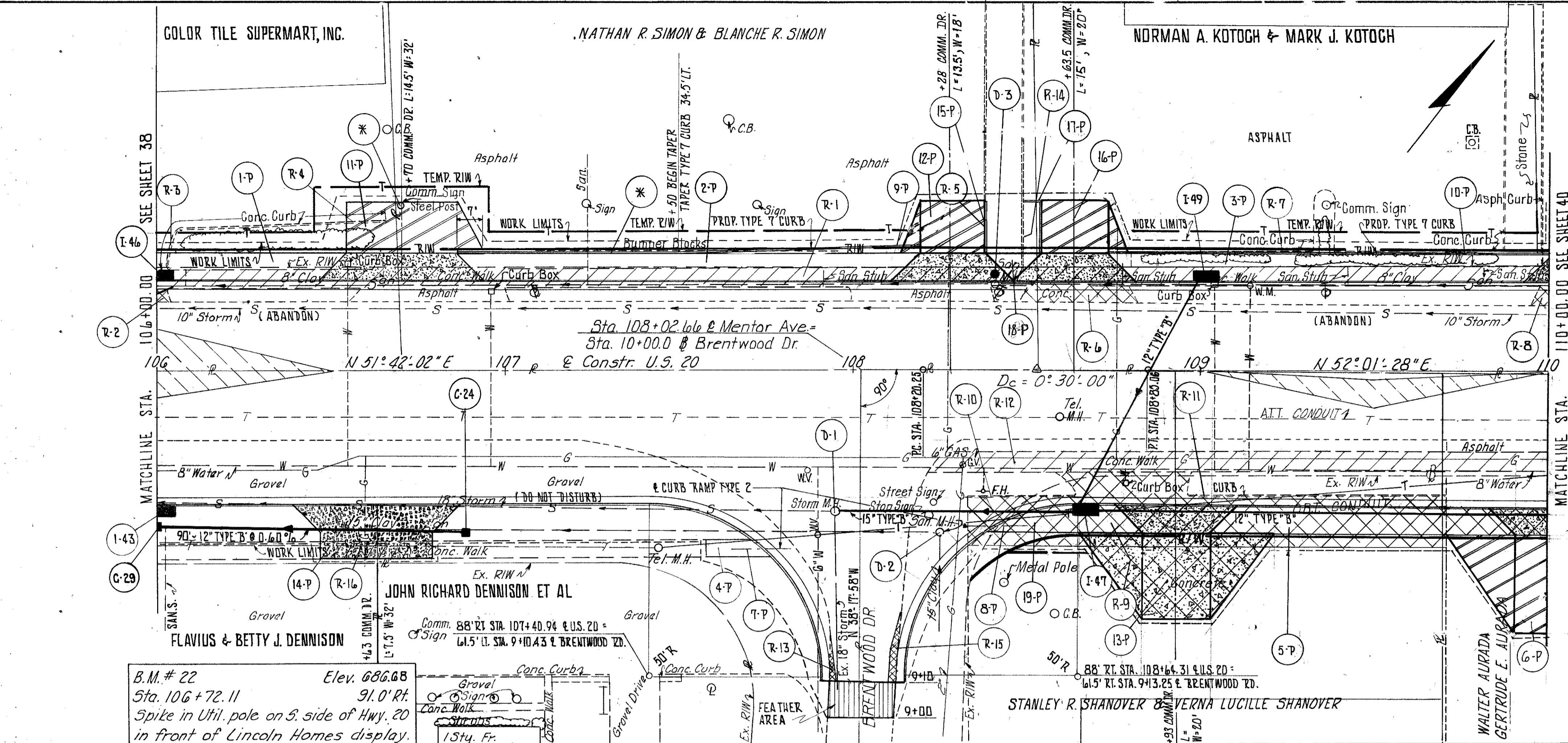
CALC. PGB 9-83
 CHK. ROB 9-83

LEGEND

- 8" ITEM 452
- 1" ITEM 404 ON 5" ITEM 301
- ITEM 202 - PAVEMENT REMOVED
- ITEM 202 - WALK REMOVED
- ITEM 202 - WEARING COURSE REMOVED

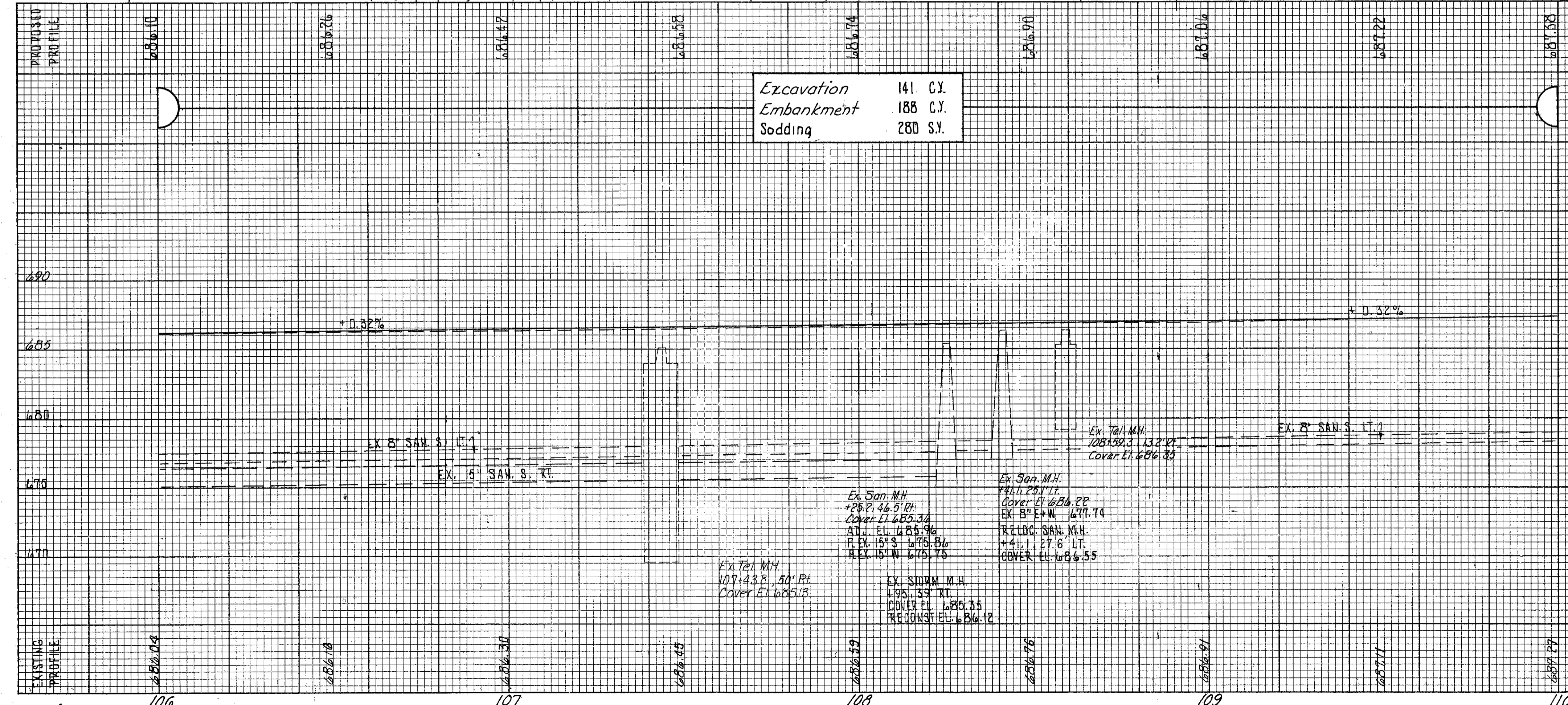
CALCULATIONS

R-1 (400x5)	=	2000 S.F.
R-2 (3.5x3.5) ÷ 9	=	1.5 S.Y.
R-6 (32.5x4.7) ÷ 9	=	17.0 S.Y.
R-8 (3.75x6) ÷ 9	=	2.5 S.Y.
R-12 (175.5x5)	=	877.5 S.F.
R-13 1/2(2x15) ÷ 9	=	1.7 S.Y.
R-15 1/2(2x15)+(2x9) ÷ 9	=	3.4 S.Y.
R-16 (32x5)	=	160 S.F.
R-9 [(137x14.5)+(6x35)+(20x25)] ÷ 9	=	349.6 S.Y.



B.M. # 22 Elev. 686.68
 Sta. 106+72.11
 Spike in Util. pole on S. side of Hwy. 20
 in front of Lincoln Homes display.

Excavation 141 C.Y.
 Embankment 188 C.Y.
 Sodding 280 S.Y.



- NOTES:**
- FOR STORM SEWER PROFILES SEE SHEET NO. 19.
 - FOR PAVEMENT, DRIVE SIDEWALK, CURB & BUTTER QUANTITIES SEE CALCULATIONS SHEET NO. 17.
 - FOR PAVEMENT DETAILS SEE SHEET NO. 15.
 - FOR CROSS SECTIONS SEE SHEET NO. 58-59.
 - FOR DRIVE DETAIL SEE SHEET NO. 22.
 - ⊛ TO BE REMOVED UNDER ITEM 201 CLEARING AND GRUBBING.
 - FOR SANITARY NOTES AND DETAIL SEE SHEET NO. 22A.

Σ W/206.11 JOINTS

REF.	STATION TO STATION	SIDE	202		604	
			WALK REMOVED S.F.	PAVEMENT REMOVED S.Y.	SANITARY MANHOLE ADJUSTED TO GRADE EA.	MANHOLE RECONSTRUCT TO GRADE EA.
D-1	107+95	RT.				
D-2	108+25.2	RT.				
D-3	108+41.1	LT.				
R-1	106+00 TO 110+00	LT.	2000			
R-2	106+00 TO 106+04	LT.		1.5		
R-3	106+03 TO 106+05	LT.			10	
R-4	106+52 TO 106+66	LT.			11	
R-5	108+38	LT.			17.5	
R-6	108+48 TO 108+83	LT.		17		
R-7	108+80 TO 109+87	LT.			107	
R-8	109+95 TO 110+00	LT.		2.5		
R-9	108+34 TO 109+71	RT.		349.6		
R-10	108+34 TO 108+65	RT.			31	
R-11	108+97 TO 109+71	RT.			74	
R-12	108+23 TO 110+00	RT.		877.5		
R-13	9+10 TO 9+25 BRENTWOOD	LT.		1.7		
R-14	108+49	LT.			17.5	
R-15	9+10 TO 9+32 BRENTWOOD	RT.		34		
R-16	106+51 TO 106+75	RT.		160		
TOTALS			3038	376	268	