

**LEGEND**

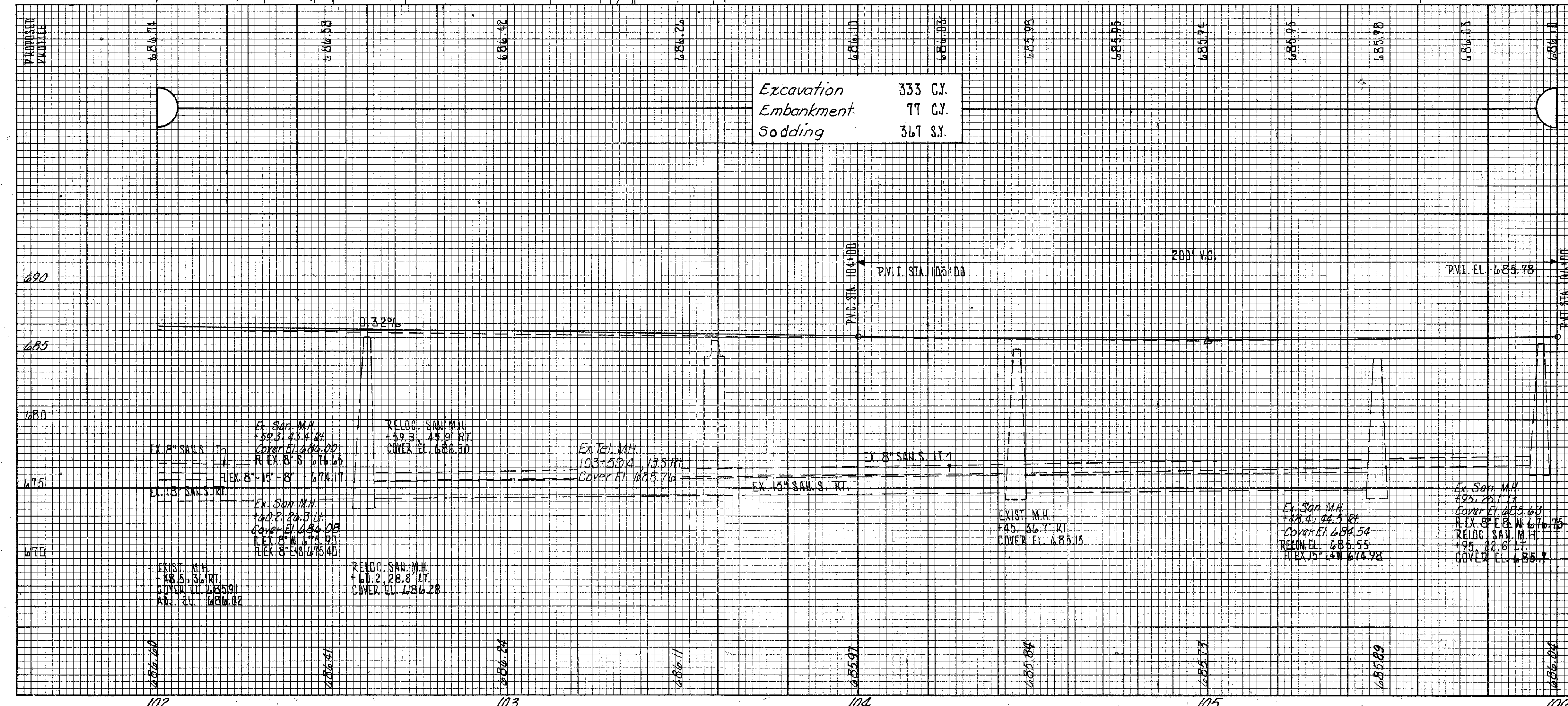
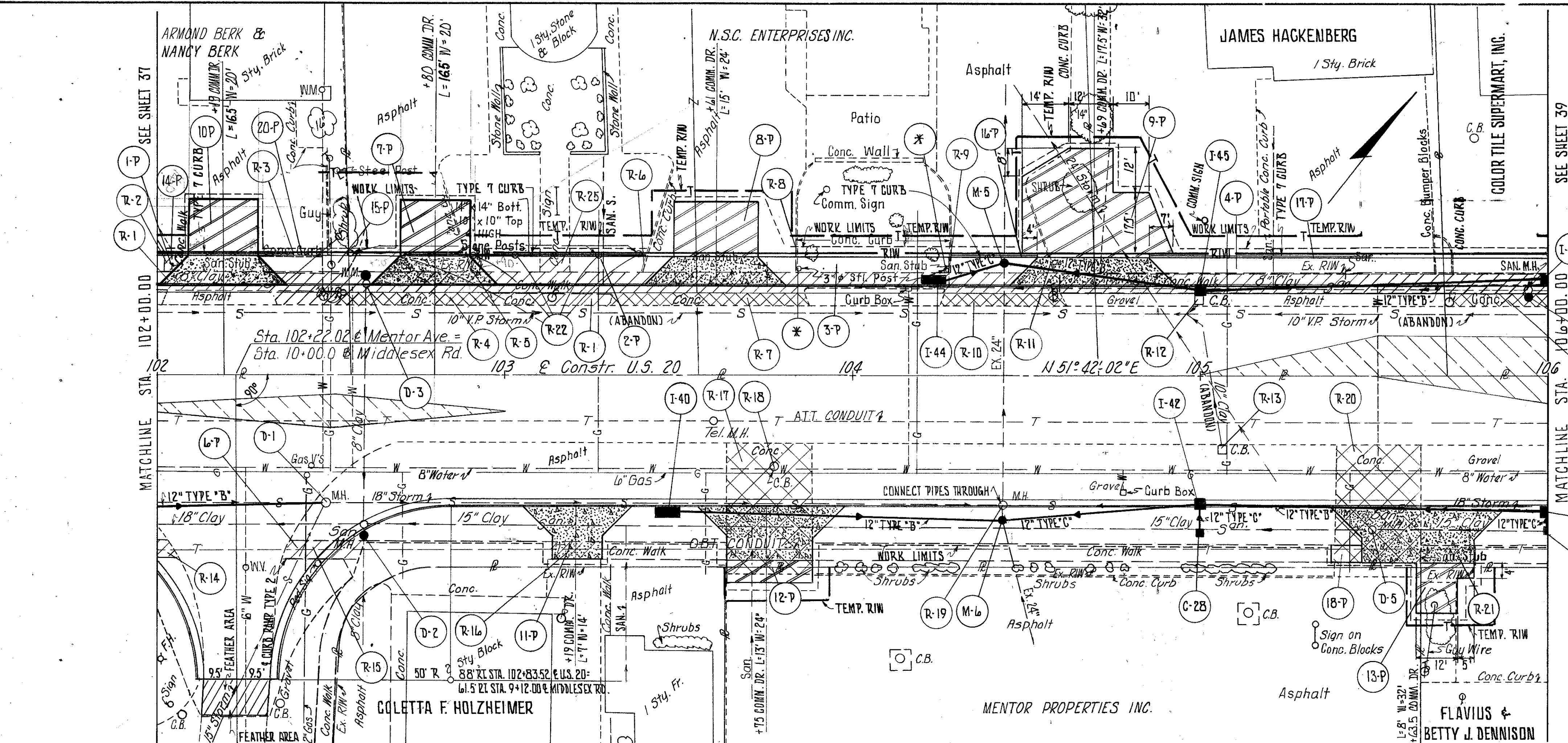
- 8" ITEM 452
- 1" ITEM 404 ON 5" ITEM 301
- ITEM 202 - PAVEMENT REMOVED
- ITEM 202 - WALK REMOVED
- ITEM 202 - WEARING COURSE REMOVED

**CALCULATIONS**

R-1	(400x5) + (34x4.5)	= 2153 S.F.
R-2	(6x1.5)	= 9 S.F.
R-4	(46x4.5) ÷ 9	= 23.0 S.F.
R-7	(56x4.5) ÷ 9	= 28.0 S.F.
R-10	(35x4.5) ÷ 9	= 17.5 S.F.
R-14	(5x4.5)	= 22.5 S.F.
R-15	(20.5x5)	= 102.5 S.F.
R-16	(14x5)	= 70 S.F.
R-17	(24x37) ÷ 9	= 98.7 S.F.
R-20	(24x34) ÷ 9	= 90.7 S.F.
R-21	(5x16)	= 80 S.F.
R-24	(27.0x4.5) ÷ 9	= 13.5 S.F.
R-25	(8x5)	= 40.0 S.F.

**NOTES:**

1. FOR SANITARY NOTES AND DETAIL SEE SHEET NO. 22A.
  2. THE CONTRACTOR SHALL BE RESPONSIBLE FOR MAINTAINING FLOW THROUGH ALL EXISTING PIPES AFTER MANHOLE HAS BEEN ABANDONED BY PROVIDING SLAB TOP 1" BELOW GRADE.
  3. (\*) TO BE REMOVED UNDER ITEM 201 CLEARING AND GRUBBING.
  4. FOR EXISTING SIDE ROAD TYPICAL SEE SHEET NO. 37.
  5. FOR STORM SEWER PROFILES SEE SHEET NO. 19.
  6. FOR PAVEMENT DRIVE, SIDEWALK, CURB + GUTTER QUANTITIES SEE CALCULATIONS SHEET NO. 17.
  7. FOR PAVEMENT DETAILS SEE SHEET NO. 75.
  8. FOR CROSS SECTIONS SEE SHEET NO. 56-57.
  9. FOR DRIVE DETAIL SEE SHEET NO. 22.
- \* AS PER PLAN (SEE NOTE)



REF.	STATION TO STATION	SIDE	202						604				
			WALK REMOVED	CURB REMOVED	PAVEMENT REMOVED	CATCH BASIN REMOVED	MANHOLE ABANDONED + CONC. FOUNDATION REMOVED	EA.	EA.	EA.			
D-1	102+48.5	RT.											
D-2	102+59.3	RT.											
D-3	102+60.2	LT.											
D-4	103+95	LT.											
D-5	105+48.4	RT.											
R-1	102+00 TO 106+00	LT.	2153										
R-2	102+03	LT.	9										
R-3	102+29 TO 102+49	LT.		22									
R-4	102+49 TO 102+97	LT.			23.0								
R-5	102+88 TO 102+90	LT.		6									
R-6	103+40 TO 103+42	LT.		6									
R-7	103+30 TO 103+87.5	LT.			28.0								
R-8	103+83	LT.		6									
R-9	104+28	LT.		6									
R-10	104+25 TO 104+61	LT.			17.5								
R-11	104+50 TO 104+63	LT.		45									
R-12	105+00	LT.											
R-13	105+06	RT.											
R-14	102+00 TO 102+06	RT.	22.5										
R-15	102+35.5 TO 102+59	RT.	102.5										
R-16	103+12 TO 103+26	RT.	70										
R-17	103+63 TO 103+87	RT.			98.7								
R-18	103+77	RT.											
R-19	104+45	RT.											
R-20	105+38 TO 105+63	RT.			90.7								
R-21	105+63 TO 105+79	RT.	80										
R-22	102+55 TO 103+38	LT.					5						
R-23	105+68 TO 105+73	LT.		30									
R-24	105+73 TO 106+00	LT.			13.5								
R-25	103+10 TO 103+18	LT.	40										
<b>TOTALS</b>			2477	121	272	3	1	5			1	1	3