

LAKE COUNTY  
LAK-20-G.65

CURVE DATA

<p>Sta. 96+90.42 U.S. 20 Asph. 30.0' 30.0' 30.0' Chisled 'X's' in Sidewalk Concord Manor Furniture P.I. Sta. 96+90.42</p>	<p>Sta. 97+88.64 U.S. 207 Chisled 'X' in SW Conc. Dr. Conc. Dr. Chisled 'X' P.K. in 40' Pine Concord Manor Furn. Gulf Car Wash P.T. Curve # 4 Sta. 97+88.64</p>	<p>Sta. 95+92.19 U.S. 207 Stockbridge Rd. Chisled 'X's' in SW Concord Manor Furniture P.C. Curve # 4 Sta. 95+92.19</p>	<p>Sta. 95+46.54 U.S. 207 Stockbridge Rd. Chisled 'X's' in SW P.C. Curve # 4 Sta. 95+92.19</p>
---	---	--	--

CALC:	PCB	9-83
CHK:	ROB	9-83

LEGEND

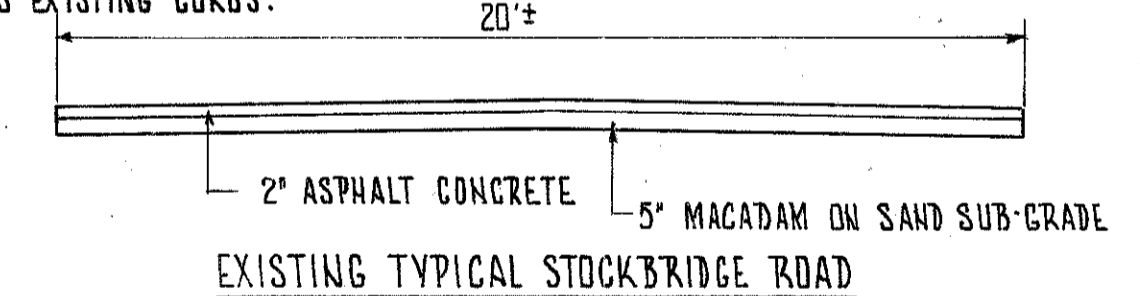
- 8" ITEM 452
- 1" ITEM 404 ON 5" ITEM 301
- ITEM 202 - PAVEMENT REMOVED
- ITEM 202 - WALK REMOVED
- ITEM 202 - WEARING COURSE REMOVED

CALCULATIONS

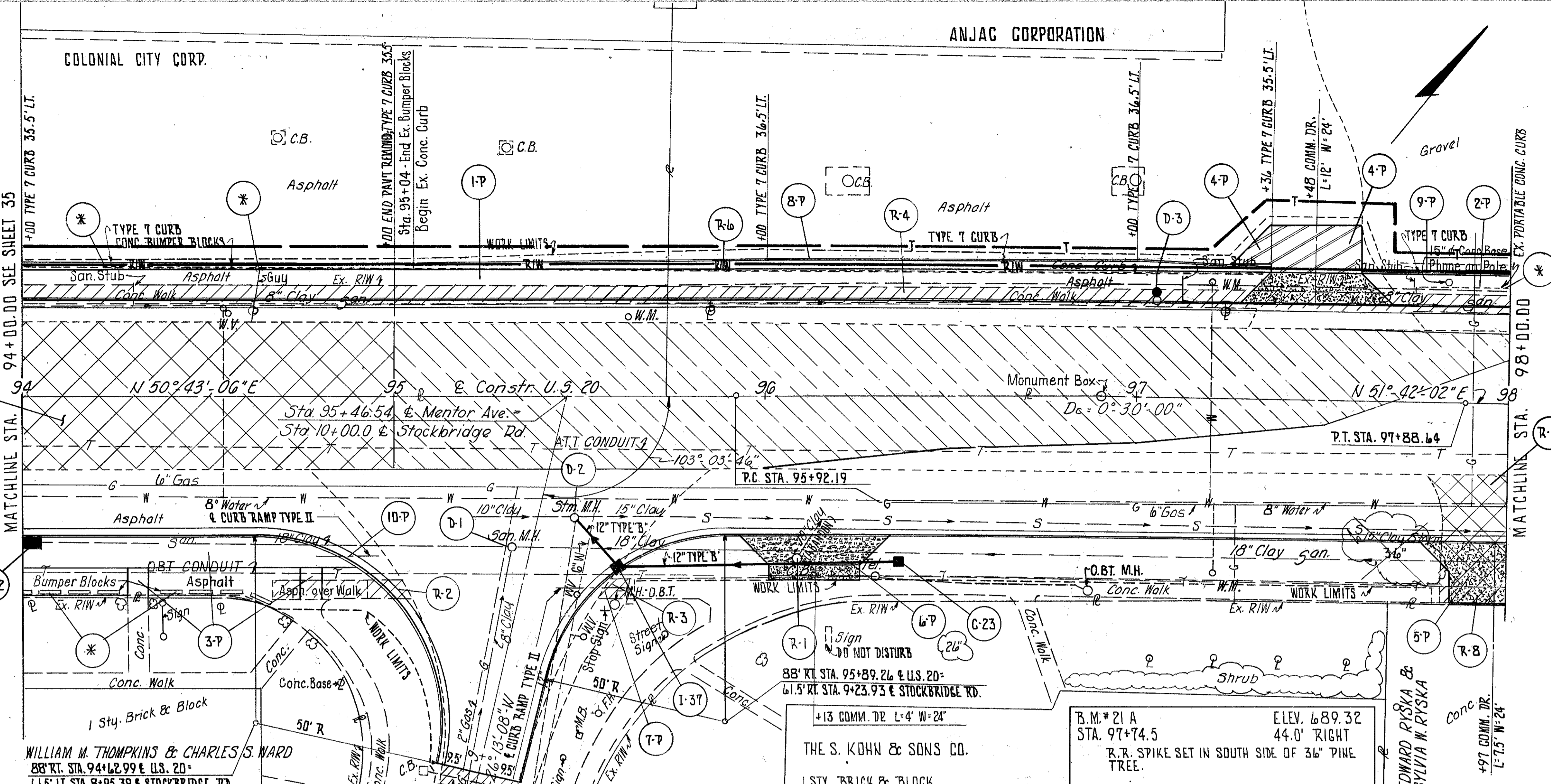
R-2	1/2 (34.5 + 37.5) 5	= 180 S.F.
R-3	(6.5 x 5)	= 32.5 S.F.
R-4	(400 x 5)	= 2000 S.F.
R-5	[(17 x 17.5) + (19 x 13)] : 9	= 60.5 S.F.
R-7	(100 x 40) : 9	= 444.44 S.F.
R-8	(15 x 5)	= 75.0 S.F.

NOTES:

1. FOR SANITARY NOTES AND DETAIL SEE SHEET NO. 22A.
2. FOR STORM SEWER PROFILES SEE SHEET NO. 18.
3. FOR PAVEMENT DETAILS SEE SHEET NO. 14.
4. FOR PAVEMENT, DRIVE, SIDEWALK, CURB & GUTTER QUANTITIES SEE CALCULATIONS SHEET NO. 16.
5. FOR CROSS SECTIONS SEE SHEET NO. 54-55.
6. FOR DRIVE DETAILS SEE SHEET NO. 23.
7. \* TO BE REMOVED UNDER ITEM 201 CLEARING AND GRUBBING
8. R-7 INCLUDES EXISTING CURBS.



Ref.	Station to Station	Side	202				604	604*	604
			PAVEMENT REMOVED	WALK REMOVED	CURB REMOVED	CATCH BASIN REMOVED	SANITARY MANHOLE RECONST. TO GRADE	NO. 3 MANHOLE AS PER PLAN	MANHOLE RECONST. TO GRADE
			S.Y.	S.F.	L.F.	EA.	EA.	EA.	
D-1	95+31.4	RT.							
D-2	95+48.3	RT.							
D-3	97+04.9	LT.							
R-1	96+09	RT.							
R-2	94+67 TO 95+04	RT.		180					
R-3	95+54 TO 95+63	RT.		33					
R-4	94+00 TO 98+00	LT.		2000					
R-5	97+79 TO 98+00	RT.		60.5					
R-6	95+04 TO 97+33	LT.			229				
R-7	94+00 TO 95+00	L+R		444.4					
R-8	97+85 TO 98+00	RT.			75				
TOTALS			505	2228	229	1			



Excavation	543	C.Y.
Embankment	89	C.Y.
Sodding	276	S.Y.

