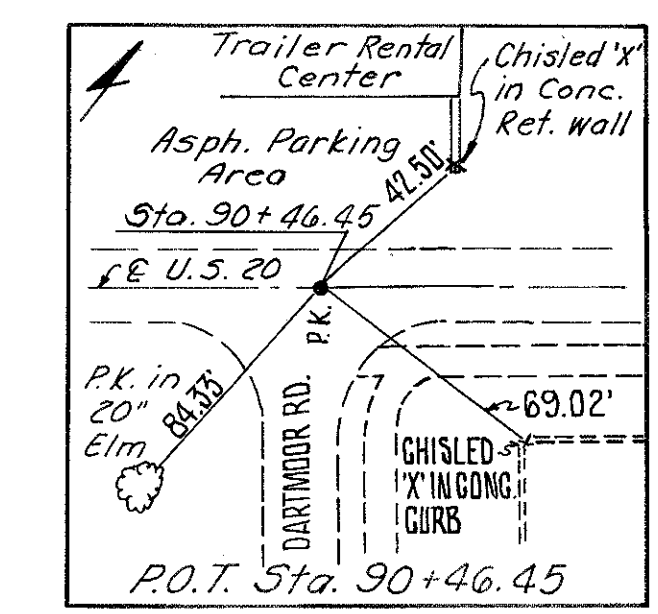


LAKE COUNTY  
LAK-20- G.65

CALC: PCB 9-83  
CHK: ROB 9-83

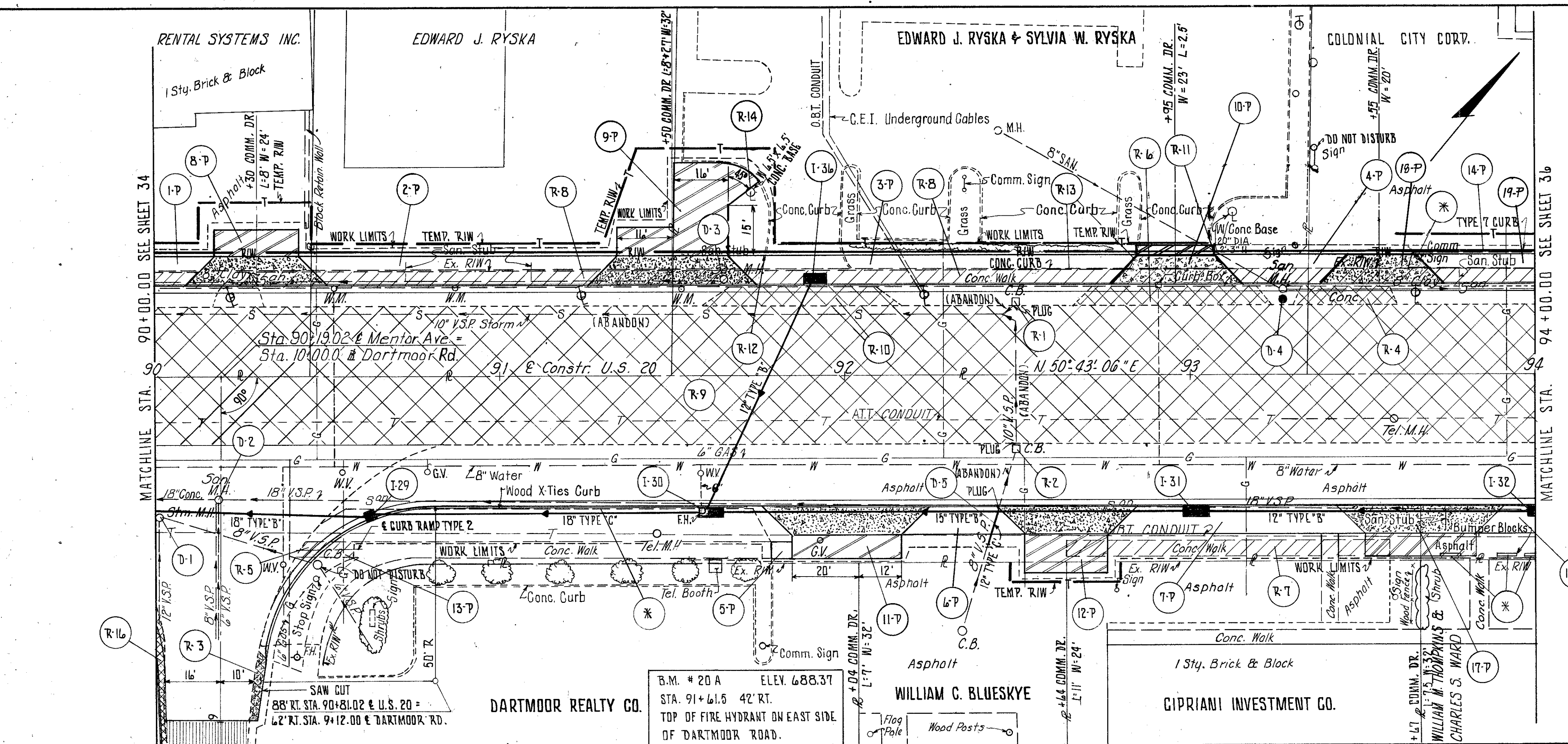
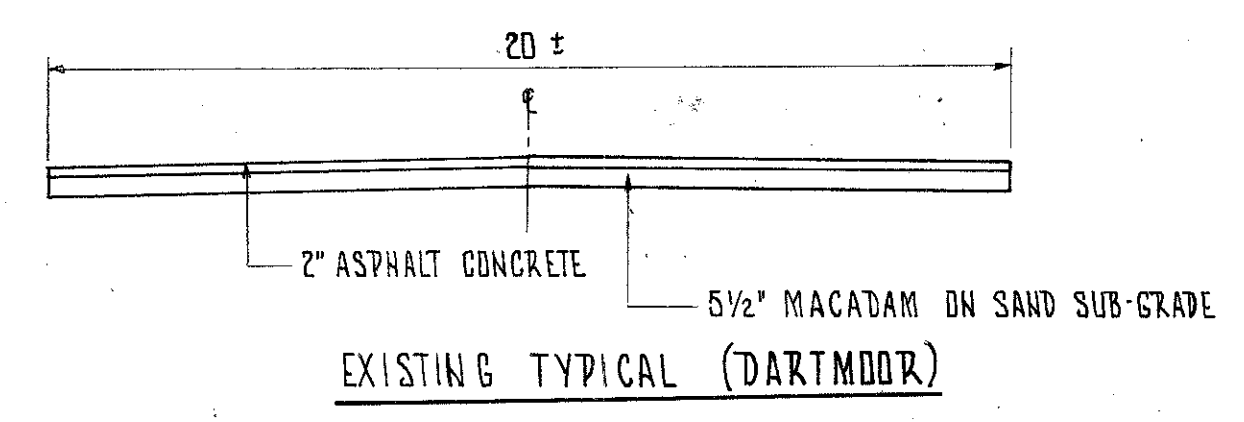


LEGEND

- 8" ITEM 452
- 1" ITEM 404 ON 5" ITEM 301
- ITEM 202 - PAVEMENT REMOVED
- ITEM 202 - WALK REMOVED

CALCULATIONS

R-4	(27.5 x 5) ÷ 9	= 15.3 S.F.
R-5	(12.5 x 5)	= 62.5 S.F.
R-6	(53 x 5) ÷ 9	= 29.4 S.F.
R-7	(93.5 x 5) + (2 x 5)	= 477.5 S.F.
R-8	(400 x 5)	= 2000 S.F.
R-9	(400 x 40) ÷ 9	= 1777.7 S.F.
R-10	(50 x 5.5) ÷ 9	= 30.6 S.F.
R-16	[(2 x 19) + (2.5 x 9)] ÷ 9 + 7.8 S.F.	
R-3	(2 x 19) ÷ 9	= 4.2 S.F.



Excavation	1062 C.Y.
Embankment	15 C.Y.
Sodding	314 S.Y.

NOTES:

1. FOR STORM SEWER PROFILES SEE SHEET NO. 18.
2. FOR PAVEMENT DETAILS SEE SHEET NO. 14.
3. FOR PAVEMENT, DRIVE, SIDEWALK, CURB + CUTTER QUANTITIES SEE CALCULATIONS SHEET NO. 16.
4. FOR CROSS SECTIONS SEE SHEET NO. 53-54.
5. FOR DRIVE DETAIL SEE SHEET NO. 22.
6. R-9 AREA INCLUDES CURB REMOVED UNDER EXISTING ASPHALT. SEE EXISTING TYPICAL SECTION.
7. \* TO BE REMOVED UNDER ITEM 201 CLEARING AND GRUBBING
8. FOR SANITARY NOTES AND DETAIL SEE SHEET NO. 22.A.

REF.	STATION TO STATION	SIDE	* W/TOL Joints				** USING 22° BENDS				
			CATCH BASIN REMOVED	CONC. CURB REMOVED	PAVEMENT REMOVED	WALK REMOVED	12" TYPE 'C' OR 106.02	NO. 3 MANHOLE AS PER PLAN	MANHOLE TO GRADE	MANHOLE TO BRANCHES	
D-1	90+01	RT.									
D-2	90+18.3	RT.									
D-3	91+65	LT.									
D-4	93+26.7	LT.									
D-5	92+41 TO 92+44					10					
R-1	92+50	LT.									
R-2	92+50	RT.									
R-3	90+26 TO 90+31	RT.					4.2				
R-4	93+30 TO 93+60	LT.					15.3				
R-5	90+40.5 TO 90+57	RT.					63				
R-6	92+66 TO 93+24	LT.					29.4				
R-7	92+65 TO 93+58	RT.					478				
R-8	90+00 TO 94+00	LT.					2000				
R-9	90+00 TO 94+00	L+R					1778				
R-10	91+58 TO 92+16	LT.					30.6				
R-11	93+06	LT.					6				
R-12	91+53 TO 91+78	LT.					50				
R-13	91+99 TO 92+85	LT.					96				
R-14	91+73	LT.									
R-16	90+00 TO 90+03	RT.					7.8				
TOTALS			2	1	1865	2541	152	10	1	2	1