

CALC: P.C.B. 9-83
CHK: R.O.B. 9-83

LEGEND

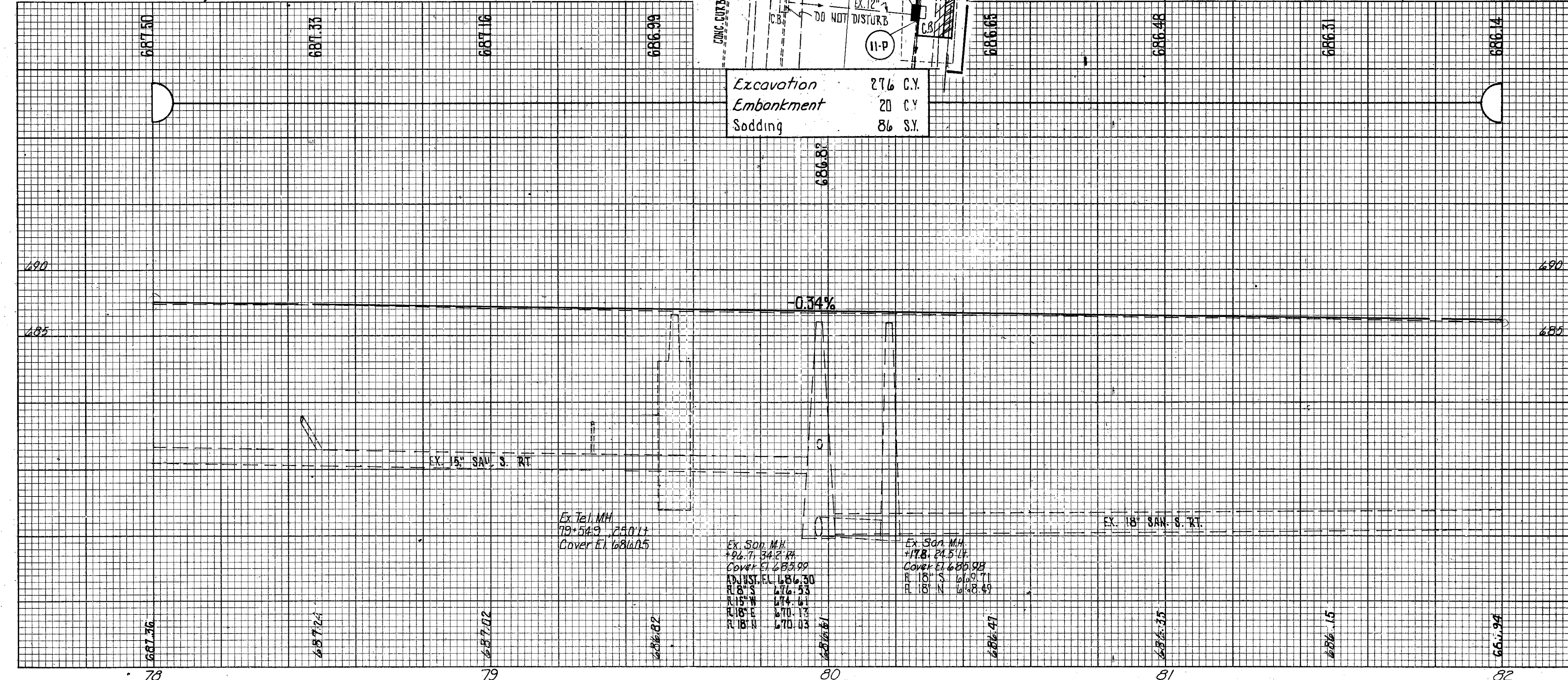
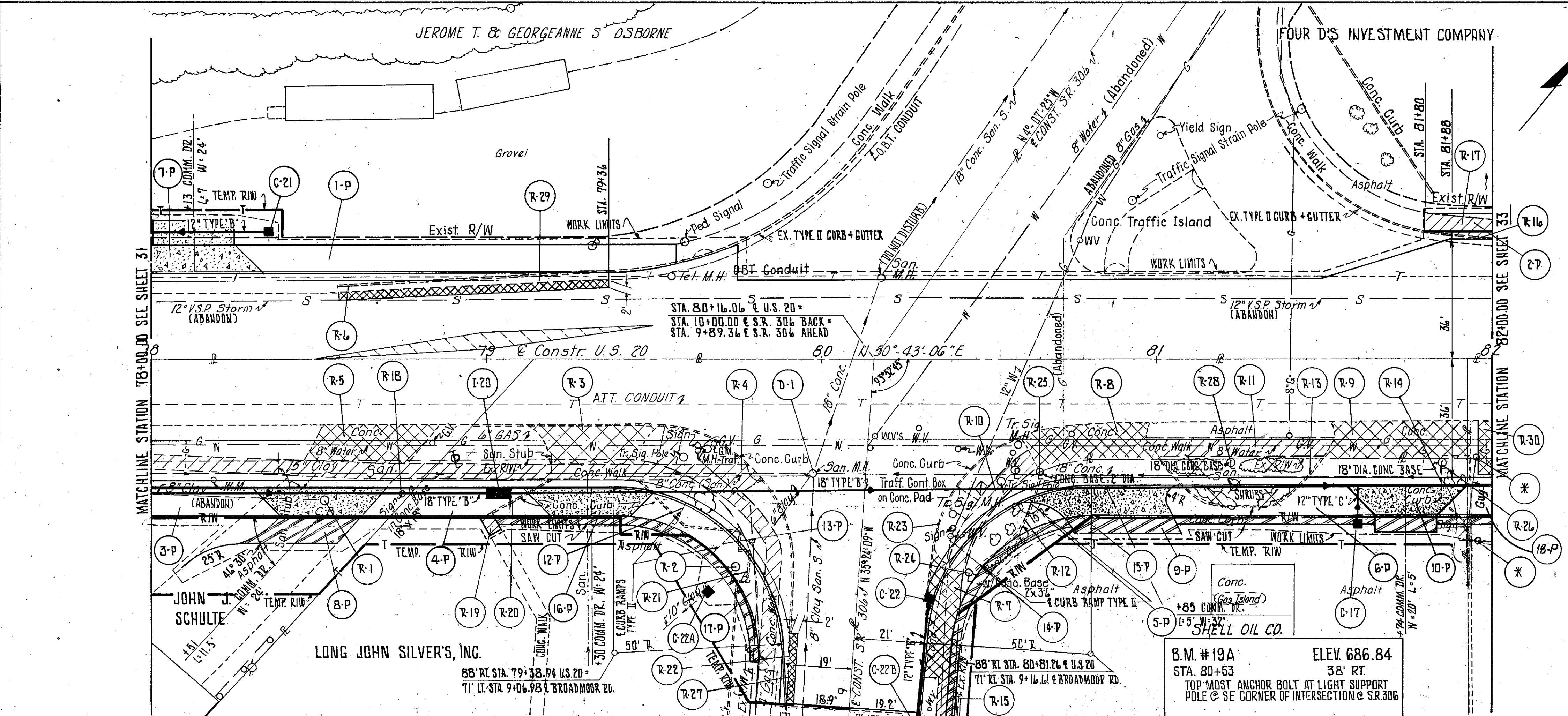
- 8" ITEM 452
- 1" ITEM 404 ON 5" ITEM 301
- 10" ITEM 304
- ITEM 202 - PAVEMENT REMOVED
- ITEM 202 - WALK REMOVED
- ITEM 202 - WEARING COURSE REMOVED

CALCULATIONS

- R-3 (30.5 x 10.5) ÷ 9 = 35.6 S.Y.
- R-4 (229 x 5.0) + 1/2 (15 x 8) + 1/2 (6 x 7) + (5 x 11.5) = 1283.5 S.F.
- R-5 (33 x 11) ÷ 9 = 40.3 S.Y.
- R-7 (10 x 35) ÷ 9 = 38.9 S.Y.
- R-8 (10.5 x 36.5) ÷ 9 = 42.6 S.Y.
- R-9 (10.5 x 41.5) ÷ 9 = 48.4 S.Y.
- R-10 (42 x 5) + (7 x 7.5) = 262.5 S.F.
- R-11 (53 x 5) = 265 S.F.
- R-15 (5 x 21) = 105 S.F.
- R-17 (20 x 5.5) = 110 S.F.
- R-19 (4 x 5) = 20 S.F.
- R-29 (80 x 2) ÷ 9 = 17.8 S.Y.
- R-27 (21 x 2) ÷ 9 = 4.7 S.Y.
- R-30 (4 x 16) ÷ 9 = 7.1 S.Y.

NOTES:

1. (*) TO BE REMOVED UNDER ITEM 201 CLEARING AND CRUISING.
- 1-A FOR H.P. PROFILE TO MATCH EXISTING GRADE.
2. FOR DRIVE DETAILS SEE SHEET NO. 22.
3. FOR CROSS SECTIONS SEE SHEET NO. 51.
4. FOR STORM SEWER PROFILES SEE SHEET NO. 77-78.
5. FOR PAVEMENT DETAILS SEE SHEET NO. 73.
6. FOR PAVEMENT, DRIVES, SIDEWALK, CURB & GUTTER QUANTITIES SEE CALCULATIONS SHEET NO. 15.



Excavation 276 C.Y.
Embankment 20 C.Y.
Sodding 86 S.Y.

REF.	STATION TO STATION	SIDE	202						404	202
			WALK REMOVED S.F.	PAVEMENT REMOVED S.Y.	CATCH BASIN REMOVED EA.	CURB & GUTTER REMOVED L.F.	CURB REMOVED L.F.	CONCRETE FOUNDATION REMOVED EA.	SANITARY MANHOLE ADJUSTED TO GRADE EA.	PIPE REMOVED 24" & UNDER L.F.
D-1	79+96.7	RT.							1	
R-1	78+52	RT.			1					
R-2	79+74	RT.			1				10	
R-3	79+12 TO 79+25	RT.		35.6						
R-4	78+00 TO 79+87	RT.	1283.5							
R-5	78+45 TO 78+86	RT.		40.3						
R-6	78+56 TO 79+36	LT.				80				
R-7	9+04 TO 9+45 S.R. 306	RT.		38.9						
R-8	80+59 TO 81+01	RT.		42.6						
R-9	81+50 TO 81+94	RT.		48.4						
R-10	80+37 TO 80+64	RT.	262.5							
R-11	80+97 TO 81+53	RT.	265							
R-12	80+43 TO 80+65	RT.					38			
R-13	81+01 TO 81+50	RT.					109			
R-14	81+85 TO 81+94	RT.					72			
R-15	8+81 TO 9+06 S.R. 306	RT.	105							
R-16	81+80 TO 82+00	LT.				20				
R-17	81+80 TO 82+00	LT.	110							
R-18	78+75	RT.						1		
R-19	79+00	RT.	20							
R-20	79+01 TO 79+19	RT.					20			
R-21	79+45 TO 79+79	RT.					66			
R-22	78+96 TO 79+94	RT.					162			
R-23	80+29 TO 80+59	RT.					94			
R-24	80+44	RT.						1		
R-25	80+65	RT.						1		
R-26	31+53	RT.						1		
R-27	9+00 TO 9+21 S.R. 306	LT.		4.7						
R-28	81+22	RT.						1		
R-29	78+56 TO 79+36	LT.		17.8						
R-30	81+96 TO 82+00	RT.		7.1						
TOTALS			2046	236	2	100	561	5	1	10