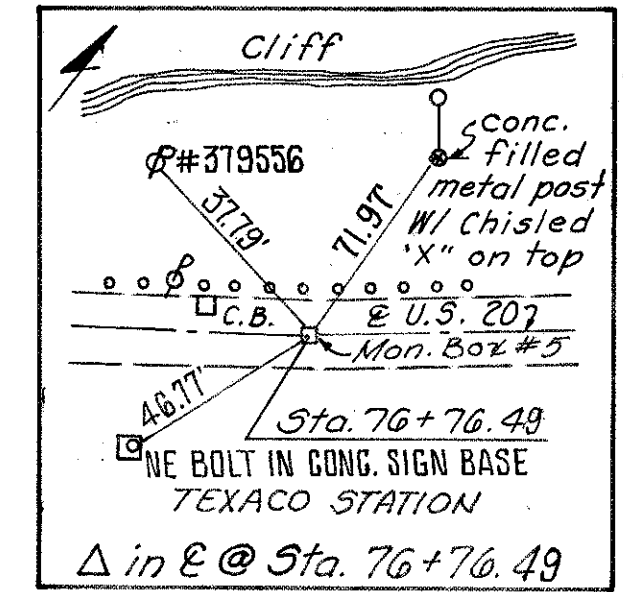


JEROME T. & GEORGEANNE S. OSBORNE

LAKE COUNTY
LAK-20-G.65

| | | |
|-------|-----|------|
| CALC. | PCB | 9-83 |
| CHK. | ROB | 9-83 |

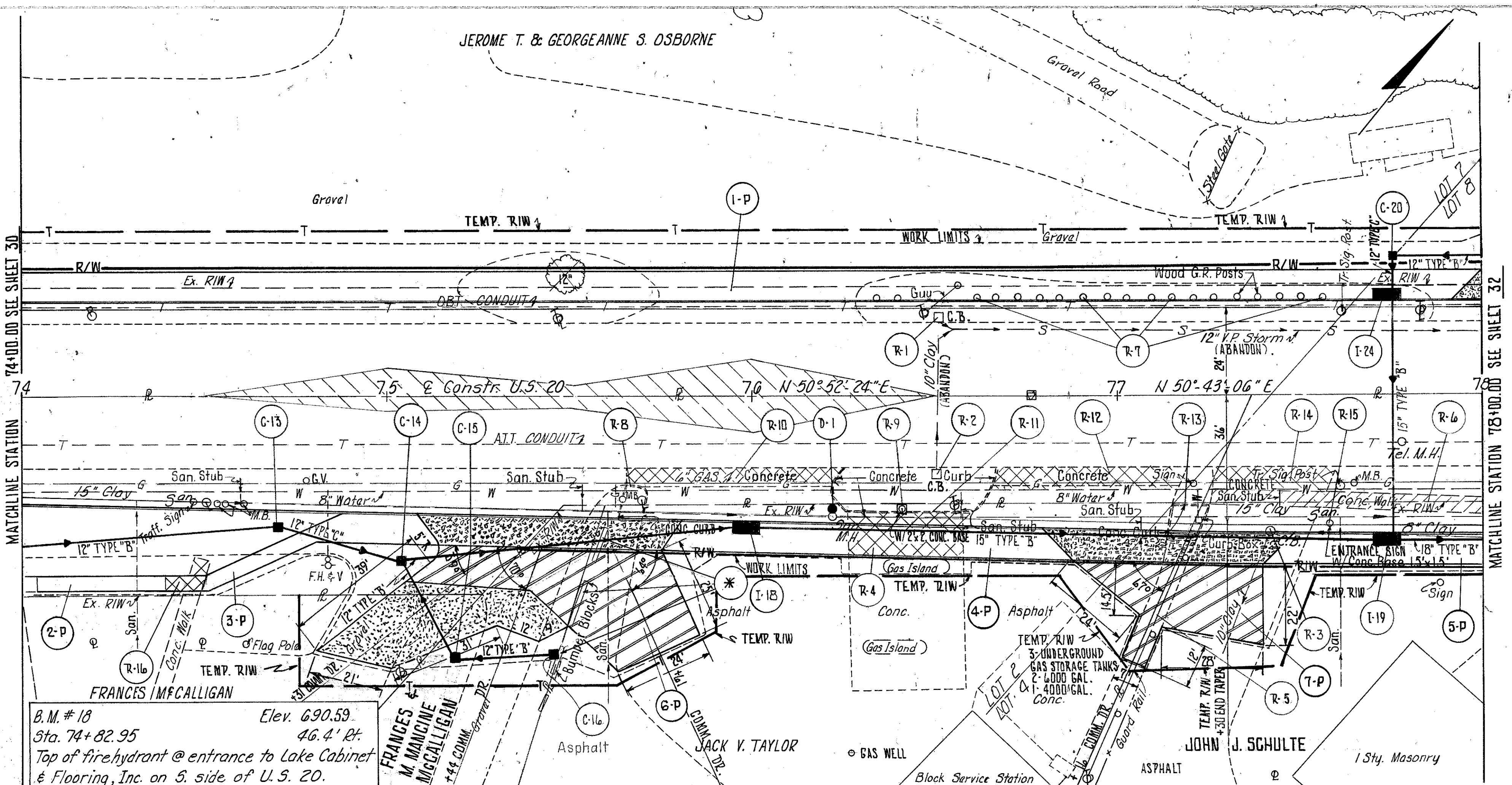


Note: At Sta. 76+76.49 the
 $\Delta = 0^{\circ} 09' 18''$ Lt.

- LEGEND**
- 8" ITEM 452
 - 1" ITEM 4-04 ON 5" ITEM 301
 - 10" ITEM 304
 - ITEM 202 - PAVEMENT REMOVED
 - ITEM 202 - WALK REMOVED
 - ITEM 202 - WEARING COURSE REMOVED

CALCULATIONS

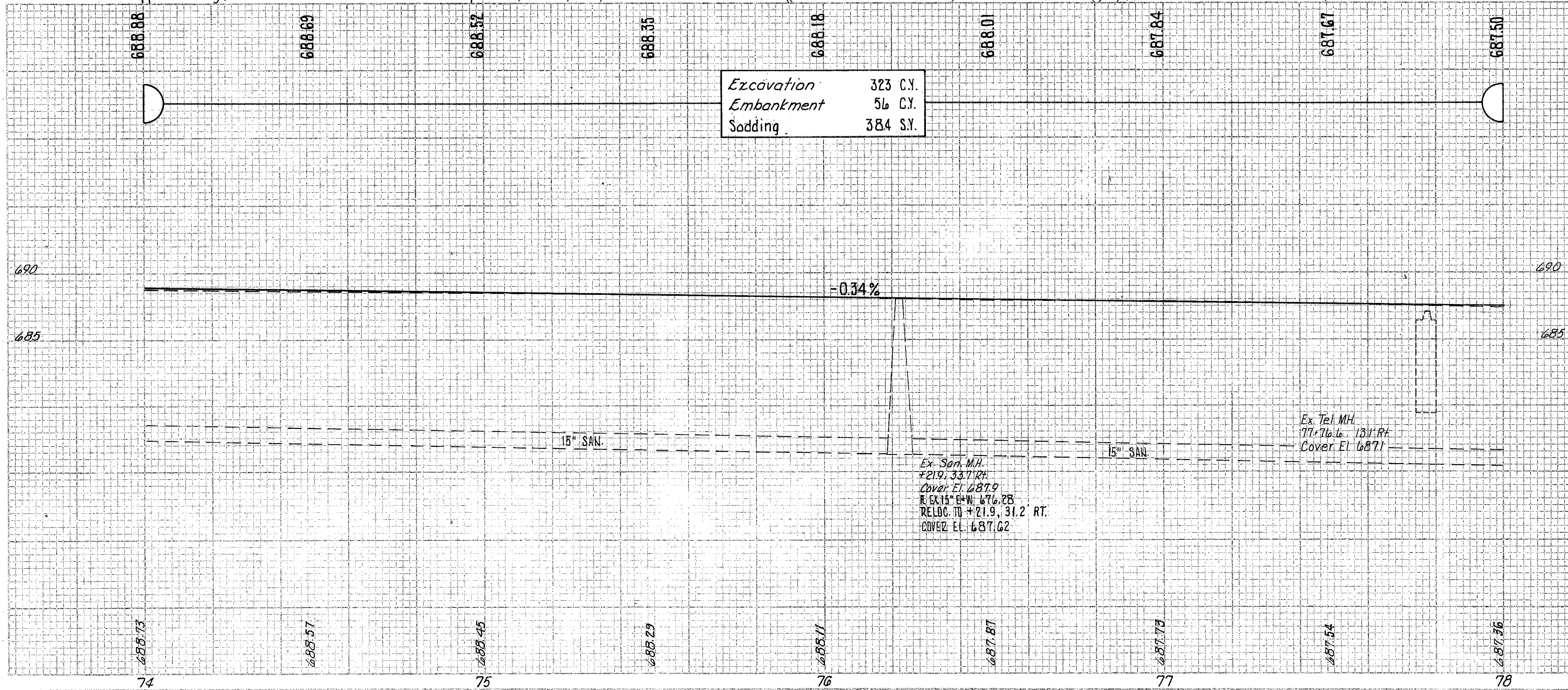
| | |
|------|----------------------------------------|
| R-4 | $(31.2 \times 12) \div 9 = 41.6$ S.F. |
| R-6 | $(5 \times 74) = 370$ S.F. |
| R-10 | $(57 \times 5) \div 9 = 31.7$ S.F. |
| R-12 | $(51 \times 6) \div 9 = 34.0$ S.F. |
| R-14 | $(32.5 \times 6.5) \div 9 = 23.5$ S.F. |
| R-16 | $(10.5 \times 5) \div 5 = 10.5$ S.F. |



B.M. # 18
Sta. 74+82.95
Top of fire hydrant @ entrance to Lake Cabinet & Flooring, Inc. on S. side of U.S. 20.
Elev. 690.59
46.4' Rt.

| | |
|------------|----------|
| Excavation | 323 C.Y. |
| Embankment | 56 C.Y. |
| Saddling | 384 S.Y. |

- NOTES:**
- FOR STORM SEWER PROFILES SEE SHEET NO. 77.
 - FOR PAVEMENT DETAILS SEE SHEET NO. 73.
 - FOR PAVEMENT, DRIVES, SIDEWALK, CURB & GUTTER QUANTITIES SEE CALCULATIONS SHEET NO. 15.
 - FOR CROSS SECTIONS SEE SHEET NO. 49-50.
 - FOR DRIVE DETAIL SEE SHEET NO. 22.
 - TO BE REMOVED UNDER ITEM 201 CLEARING AND GRUBBING
 - FOR SANITARY NOTES AND DETAIL SEE SHEET NO. 22A.



* W/206.11 JOINTS

| REF. | STATION TO STATION | SIDE | 202 | | | | | | NO. 3 MANHOLE AS PER PLAN | |
|---------------|--------------------|------|---------------------|--------------|-------------------|------------------|--------------------------|--------------|---------------------------|-------------------------|
| | | | CATCH BASIN REMOVED | CURB REMOVED | GUARDRAIL REMOVED | PAVEMENT REMOVED | CONC. FOUNDATION REMOVED | WALK REMOVED | | GUARDRAIL POSTS REMOVED |
| | | | EA. | L.F. | L.F. | S.Y. | EA. | S.F. | EA. | EA. |
| D-1 | 76+21.9 | RT. | | | | | | | | 1 |
| R-1 | 76+51 | LT. | 1 | | | | | | | |
| R-2 | 76+51 | RT. | 1 | | | | | | | |
| R-3 | 77+42 | RT. | 1 | | | | | | | |
| R-4 | 76+26 TO 76+57.5 | RT. | | | | 41.6 | | | | |
| R-5 | 77+05 TO 77+18 | RT. | | | | 37.5 | | | | |
| R-6 | 77+26 TO 78+00 | RT. | | | | | 370 | | | |
| R-7 | 76+34 TO 77+56 | LT. | | | | | | | 19 | |
| R-8 | 75+62 TO 75+71 | RT. | | 34 | | | | | | |
| R-9 | 76+42 | RT. | | | | 1 | | | | |
| R-10 | 75+65 TO 76+25 | RT. | | | | 31.7 | | | | |
| R-11 | 76+22 TO 76+67 | RT. | | 64 | | | | | | |
| R-12 | 76+66 TO 77+19 | RT. | | | | 34 | | | | |
| R-13 | 77+13 TO 77+25 | RT. | | 38 | | | | | | |
| R-14 | 77+26 TO 77+60 | RT. | | | | 23.5 | | | | |
| R-15 | 77+58 | RT. | | | | 1 | | | | |
| R-16 | 74+39 TO 74+50 | RT. | | | | | 77.5 | | | |
| TOTALS | | | 3 | 136 | 37.5 | 131 | 2 | 447.5 | 19 | 1 |