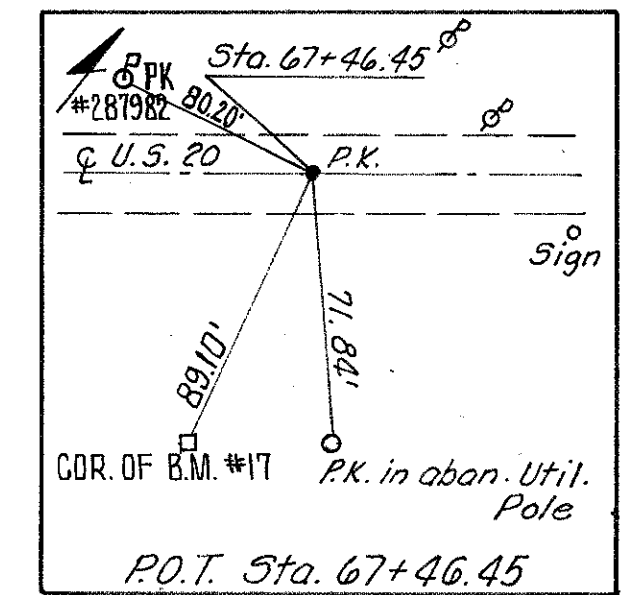


LAKE COUNTY
LAK-20-G.65

CALC: PCB 9-83
CHK: ROB 9-83



LEGEND

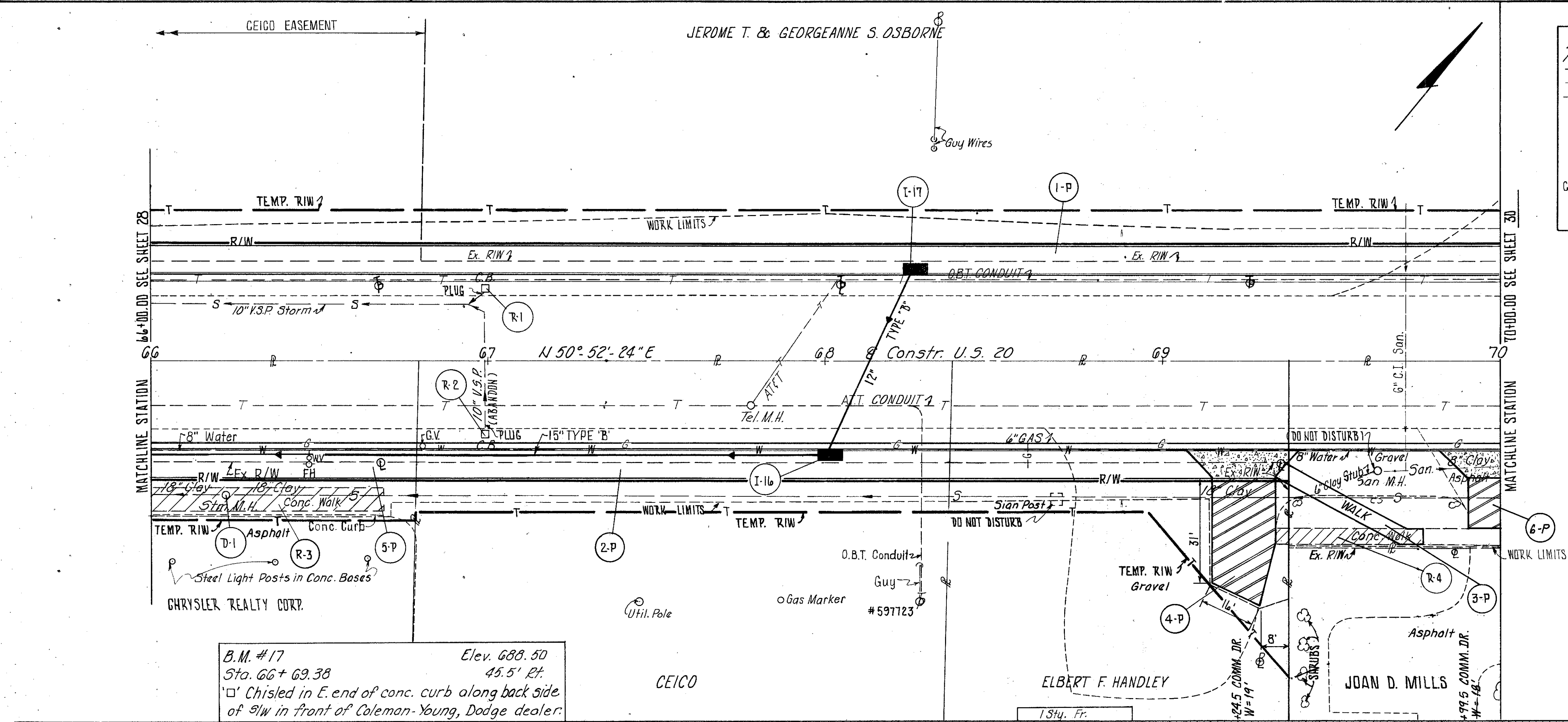
- 8" ITEM 452
- 1" ITEM 404 ON 5" ITEM 301
- ITEM 202 - WALK REMOVED

CALCULATIONS
R-4 (43x5) = 215 S.F.
R-3 (67x6) = 402 S.F.

NOTES:

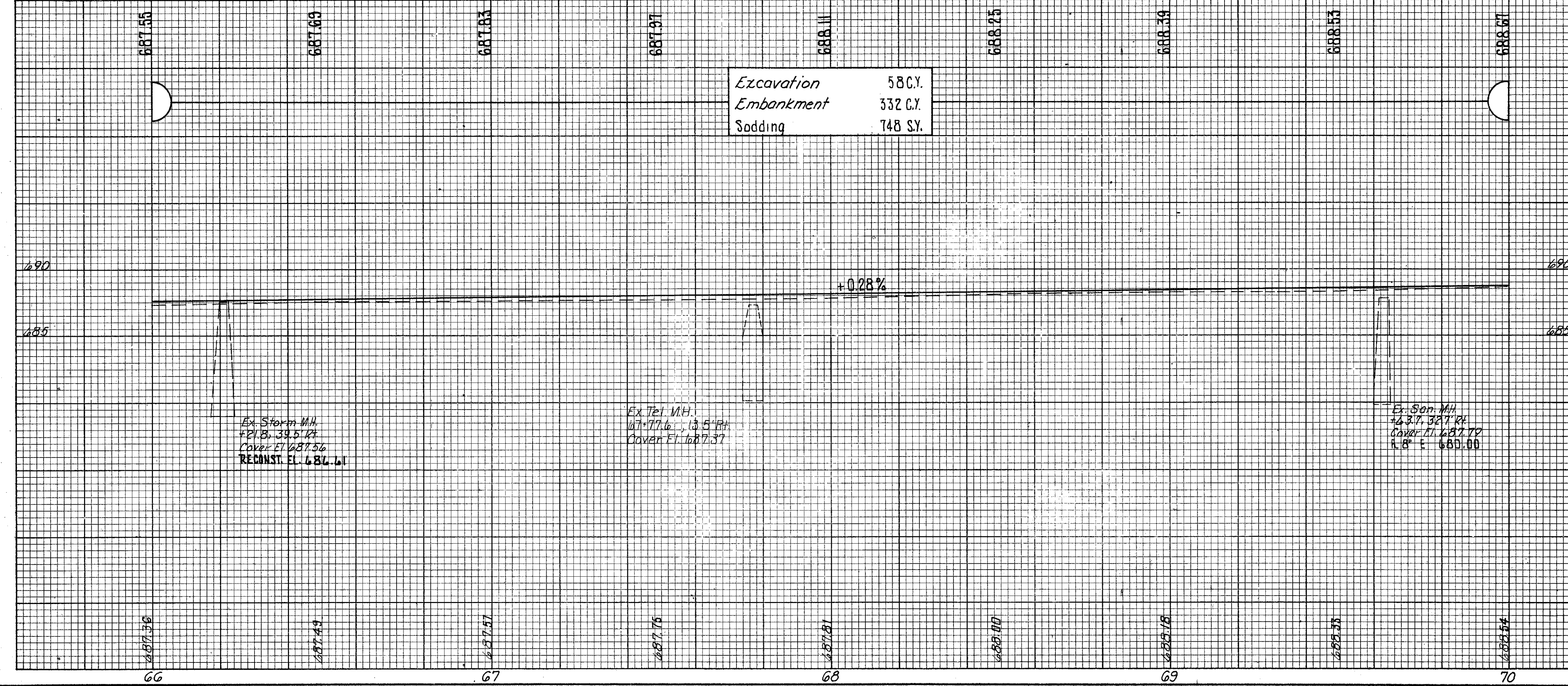
1. FOR STORM SEWER PROFILES SEE SHEET NO. 11.
2. FOR PAVEMENT, DRIVE, SIDEWALK, CURB & GUTTER QUANTITIES SEE CALCULATIONS SHEET NO. 15.
3. FOR CROSS SECTIONS SEE SHEET NO. 48.
4. FOR DRIVE DETAILS SEE SHEET NO. 22.

REF.	STATION TO STATION	SIDE	202		604
			CATCH BASIN REMOVED	WALK REMOVED	MANHOLE RECONST. TO GRADE
			EA.	S.F.	EA.
R-1	66+99	LT.	1		
R-2	66+99	RT.	1		
R-3	66+00 TO 66+67	RT.		402	
R-4	69+34 TO 69+77	RT.		215	
D-1	66+21.8	RT.			1
TOTALS			2	617	1



B.M. #17
Sta. 66+69.38
Elev. 688.50
45.5' Pt.
Chisled in E. end of conc. curb along back side of SW in front of Coleman-Young, Dodge dealer.

Excavation 58 C.Y.
Embankment 332 C.Y.
Sodding 748 S.Y.



Ex Storm M.H.
P.C.B. 39.5' H.
Cover El. 687.36
RECONSTR. EL. 684.61

Ex Tel. M.H.
47' 77.6" H.
Cover El. 687.37

Ex San. M.H.
42' 37.02' H.
Cover El. 687.72
R.B. El. 685.66