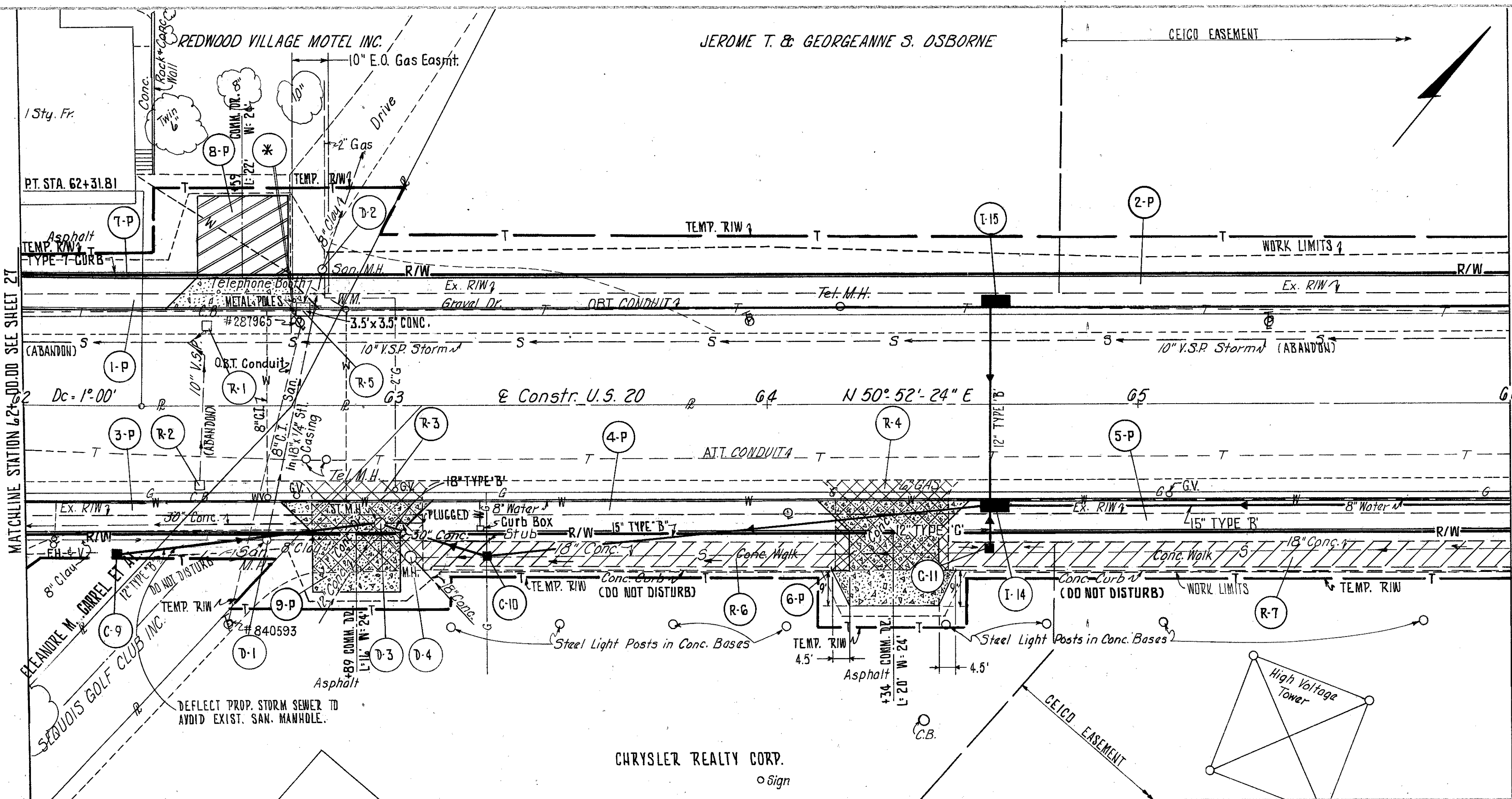
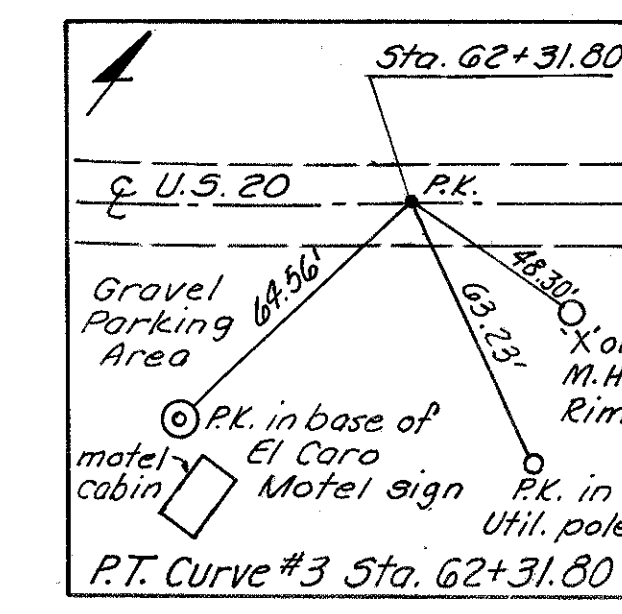


LAKE COUNTY
LAK-20-G.65

CALC: PCB 9-83
CHK: RDB 9-83



LEGEND

- 8" ITEM 452
- 1" ITEM 404 ON 5" ITEM 301
- ITEM 202 - PAVEMENT REMOVED
- ITEM 202 - WALK REMOVED

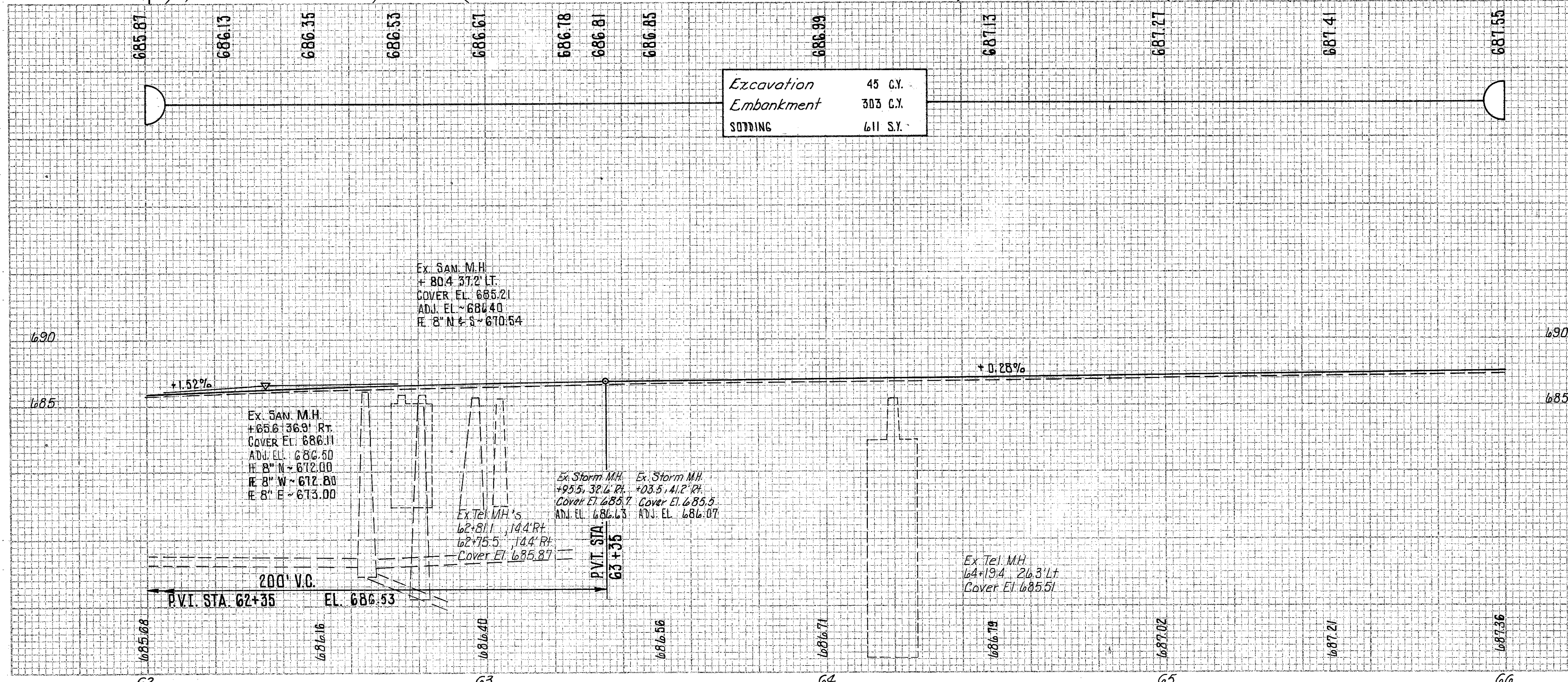
CALCULATIONS

- R-3 $[(29.5 \times 25) + \frac{1}{2}(2.5 \times 5) 2] \div 9 = 83.3$ S.Y.
- R-4 $[(30 \times 24) + \frac{1}{2}(2.5 \times 5) 2] \div 9 = 81.4$ S.Y.
- R-6 $(112 \times 6) = 672$ S.F.
- R-7 $(151 \times 6) = 906$ S.F.

NOTES:

1. FOR STORM SEWER PROFILES SEE SHEET NO. 77.
 2. FOR PAVEMENT, DRIVE, SIDEWALK, CURB & BUTTER QUANTITIES SEE CALCULATIONS SHEET NO. 14.
 3. FOR CROSS SECTIONS SEE SHEET NO. 47.
 4. FOR DRIVE DETAILS SEE SHEET NO. 22.
- * TO BE REMOVED UNDER ITEM 201 CLEARING AND GRUBBING.

Excavation	45 C.Y.
Embankment	303 C.Y.
SODDING	611 S.F.



REF.	STATION TO STATION	SIDE	202		604		604	
			CATCH BASIN REMOVED	PAVEMENT REMOVED	STRUCTURE REMOVED	WALK REMOVED	MANHOLE ADJUSTED TO GRADE	SANITARY MANHOLE ADJUSTED TO GRADE
D-1	62+65.6	RT.						
D-2	62+80.4	LT.						
D-3	62+95.5	RT.						
D-4	63+03.5	RT.						
R-1	62+50	LT.	1					
R-2	62+47	RT.	1					
R-3	62+74 TO 73+12	RT.		83.3				
R-4	64+15 TO 64+51	RT.		81.4				
R-5	62+75	LT.			LUMP			
R-6	63+07 TO 64+19	RT.				672		
R-7	64+49 TO 66+00	RT.				906		
TOTALS			2	165	LUMP	1578	2	1