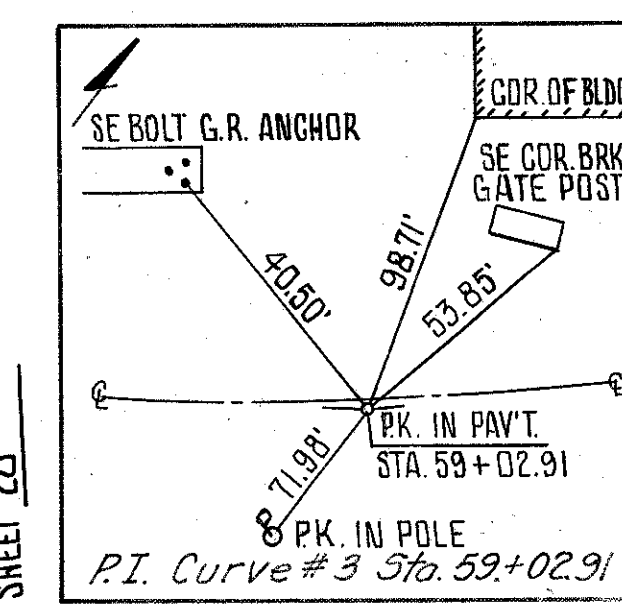


LAKE COUNTY  
LAK-20-G.65

CALC: P.G.B 9-83  
CHK: ROB 9-83



CURVE DATA

P.I. Sta. 59+02.91  
P.C. Sta. 55+73.30  
P.T. Sta. 62+31.81  
 $\Delta = 6^{\circ}35'06''$   
 $D_c = 1^{\circ}00'00''$   
 $R = 5729.58'$   
 $L = 658.51'$   
 $T = 329.61'$   
 $E = 9.47'$

LEGEND

- 6" ITEM 452
- 8" ITEM 452
- 1" ITEM 404 ON 5" ITEM 301
- 10" ITEM 304
- 8" ITEM 304
- ITEM 202 - WEARING COURSE REMOVED
- ITEM 202 WALK REMOVED

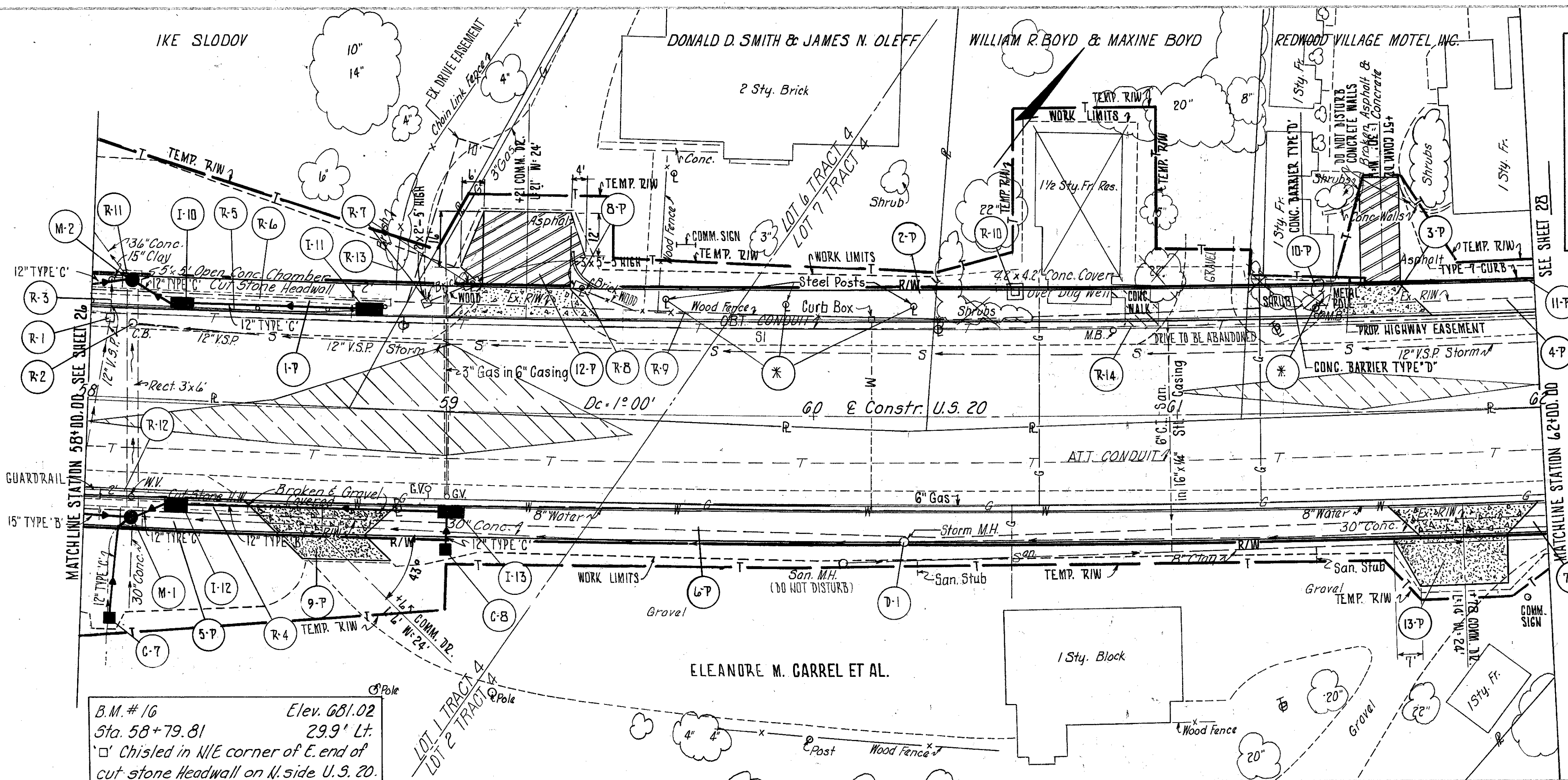
CALCULATIONS

R-14  $(3.5 \times 3.5) + (7 \times 5) + (6 \times 9) = 101.25$  S.F.

NOTES:

1. FOR STORM SEWER PROFILES SEE SHEET NO. 77.
2. FOR PAVEMENT, DRIVE, SIDEWALK, CURB & GUTTER QUANTITIES SEE CALCULATIONS SHEET NO. 14.
3. FOR CROSS SECTIONS SEE SHEET NO. 46.
4. FOR DRIVE DETAILS SEE SHEET NO. 22.
5. \* TO BE REMOVED UNDER ITEM 201 CLEARING AND GRUBBING
6. REMOVE R-6 AND R-4 TO 1' BELOW FINISHED GRADE

REF.	STATION TO STATION	SIDE	202							604	622	
			WALK REMOVED	CATCH BASIN REMOVED	CATCH BASIN ABANDON	GUARDRAIL REMOVED	PIPE REMOVED	& UNDER	FENCE REMOVED			STRUCTURES REMOVED
			S.F.	EA.	EA.	L.F.	L.F.	L.F.	LUMP	LUMP	EA.	L.F.
D-1	60+25	RT.									1	
P-10	61+21.5 TO 61+51.5	LT.										30
R-1	58+05	LT.		1								
R-2	58+12	LT.				1						
R-3	58+05 TO 58+09	LT.					20					
R-4	58+00 TO 58+80	RT.										
R-5	58+00 TO 58+81	LT.				81						
R-6	58+00 TO 58+82	LT.										
R-7	58+91 TO 59+07	LT.										
R-8	59+33 TO 59+38	LT.										
R-9	59+38 TO 60+35	LT.						98				
R-10	60+55	LT.										
R-11	58+11	LT.										
R-12	58+00 TO 58+37	RT.				37						
R-13	58+84	LT.						16				
R-14	60+82 TO 60+95	LT.	101									
TOTALS			101	1	1	118	20	113	LUMP	LUMP	1	30



B.M. # 16 Elev. 681.02  
Sta. 58+79.81 29.9' Lt.  
Chisled in N/E corner of E. end of cut stone Headwall on N. side U.S. 20.

Excavation 83 C.Y.  
Embankment 743 C.Y.  
Sodding 683 S.Y.

