

LAKE COUNTY
LAK-20-G.65

CALC: PGB 9-83
CHK: ROB 9-83

Gar. 2-Stry. Blk. Res.
S/W Chisled X's
R.F.H.
U.S. 20 P.K. PK. IN POLE
C #281163
Sta. 55+73.30
Conc. Ref. Wall
P.C. Curve #3 Sta. 55+73.30

a. 52.75'
b. 46.93'
c. 49.12'

LEGEND

- 8" ITEM 452
- 10" ITEM 304
- ITEM 202 - PAVEMENT REMOVED
- ITEM 202 - WEARING COURSE REMOVED

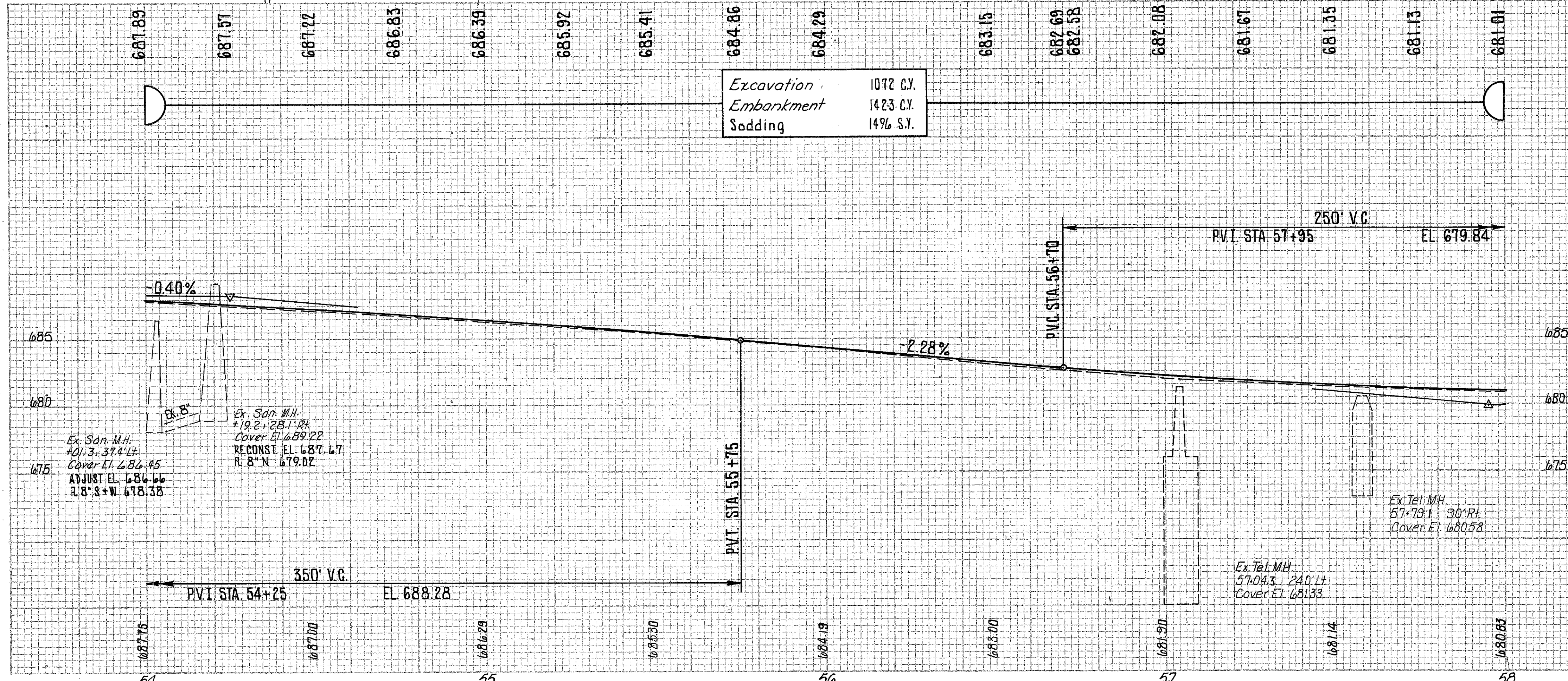
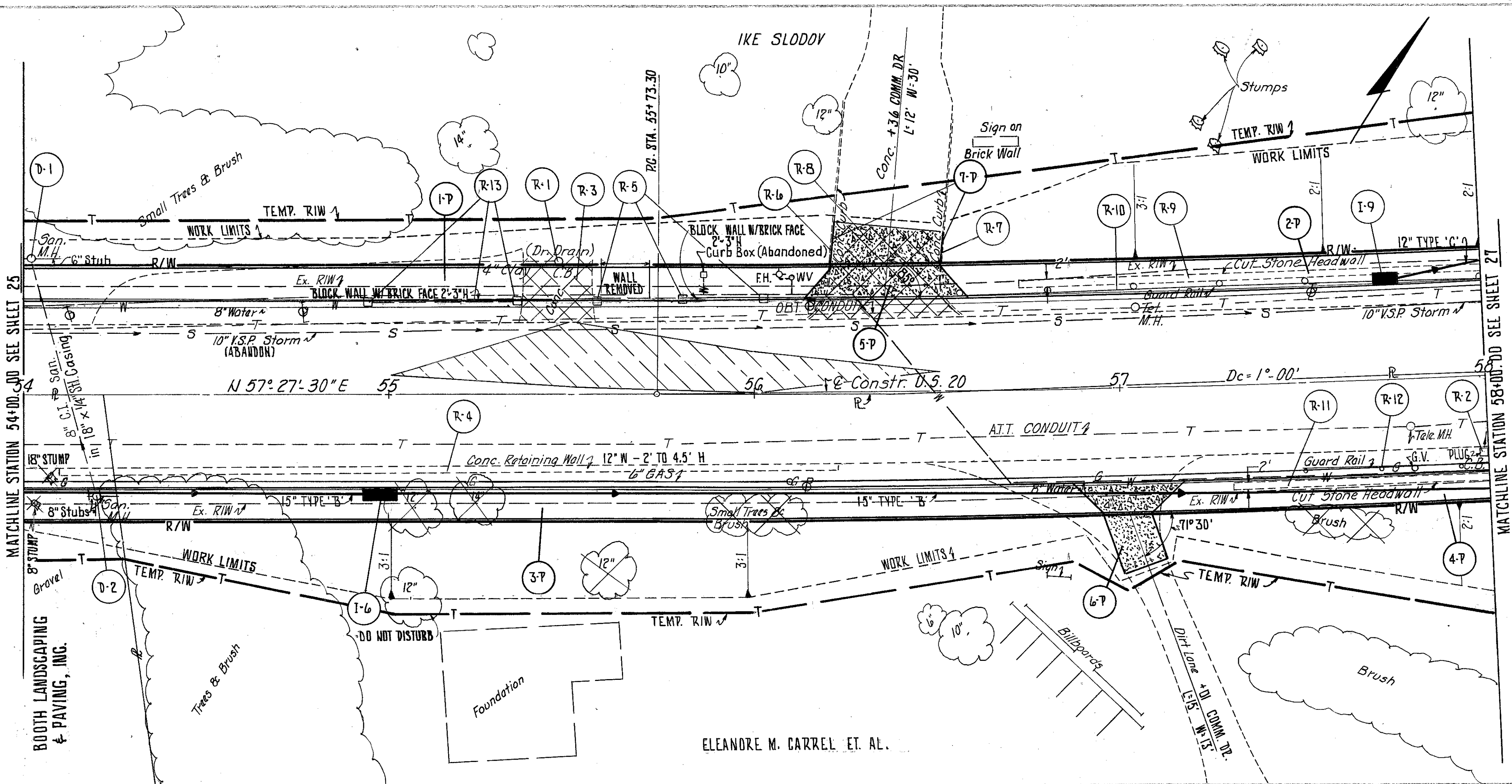
CALCULATIONS

R-3 (19.5 x 19.2) ÷ 9 = 41.6 S.Y.
R-8 [(30 x 25) + 1/2(8 x 3.5) + 1/2(9 x 5)] ÷ 9 = 87.4 S.Y.

NOTES:

1. FOR STORM SEWER PROFILES SEE SHEET NO. 76-77.
2. FOR PAVEMENT, DRIVE, SIDEWALK, CURB & GUTTER QUANTITIES SEE CALCULATIONS SHEET NO. 14.
3. FOR CROSS SECTIONS SEE SHEET NO. 45-46.
4. FOR DRIVE DETAIL SEE SHEET NO. 22.
5. REMOVE R-4, R-11 & R-9 TO 1' BELOW FINISHED GRADE.
6. D-2 DEFLECT PROPOSED 15" CONDUIT TO AVOID EXIST. SANITARY MANHOLE.

REF.	STATION TO STATION	SIDE	202		STRUCTURES REMOVED	604		609 CURB TYPE			
			CURB REMOVED	PAVEMENT REMOVED		SANITARY MANHOLE RECONSTRUCTED TO GRADE	SANITARY MANHOLE ADJUSTED TO GRADE				
D-1	54+01.3	LT.									
D-2	54+19.2	RT.									
7-7	56+36	LT.						21			
R-1	55+46	LT.									
R-2	57+99	RT.									
R-3	55+35 TO 55+54	LT.									
R-4	54+09 TO 56+23	RT.			LUMP						
R-5	55+55.5 TO 56+04	LT.						LUMP			
R-6	56+15 TO 56+22	LT.	28								
R-7	56+51 TO 56+56	LT.	25								
R-8	56+15 TO 56+56	LT.						87.4			
R-9	56+73 TO 58+00	LT.			LUMP						
R-10	56+56 TO 58+00	LT.	144								
R-11	57+30 TO 58+00	RT.			LUMP						
R-12	57+50 TO 58+00	RT.	50								
R-13	54+93 TO 55+36	LT.						LUMP			
TOTALS			53	194	LUMP	2	129	LUMP	1	1	21



Excavation	1072 C.Y.
Embankment	1423 C.Y.
Sodding	1496 S.Y.