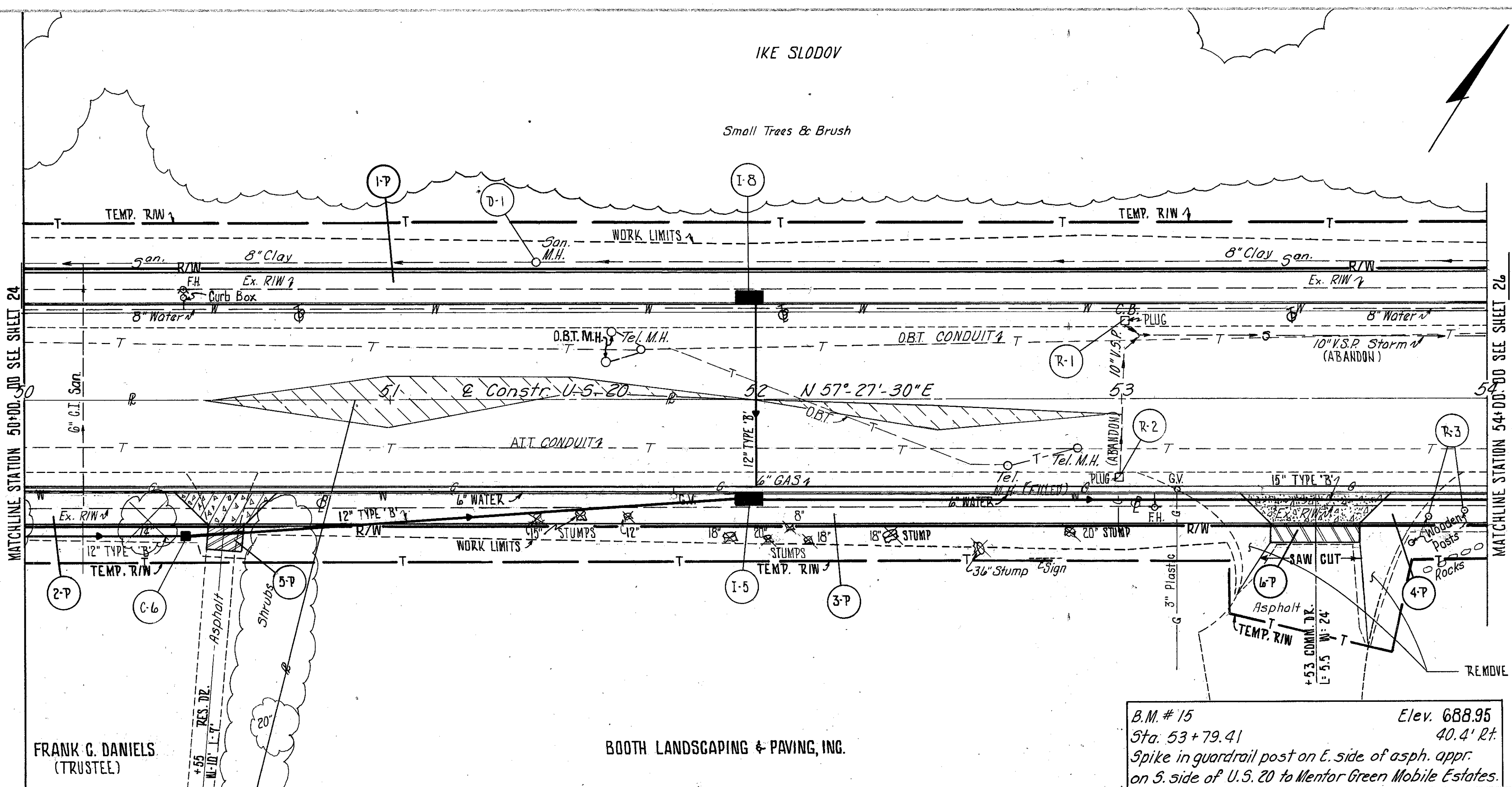
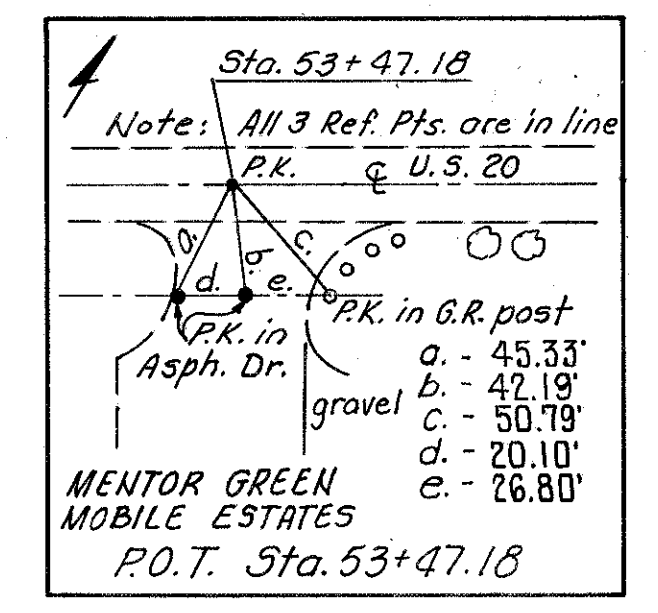


IKE SLODOV

Small Trees & Brush

LAKE COUNTY  
LAK-20-G.65

CALC: PGB 9-83  
CHK: ROB 9-83



FRANK G. DANIELS  
(TRUSTEE)

BOOTH LANDSCAPING & PAVING, INC.

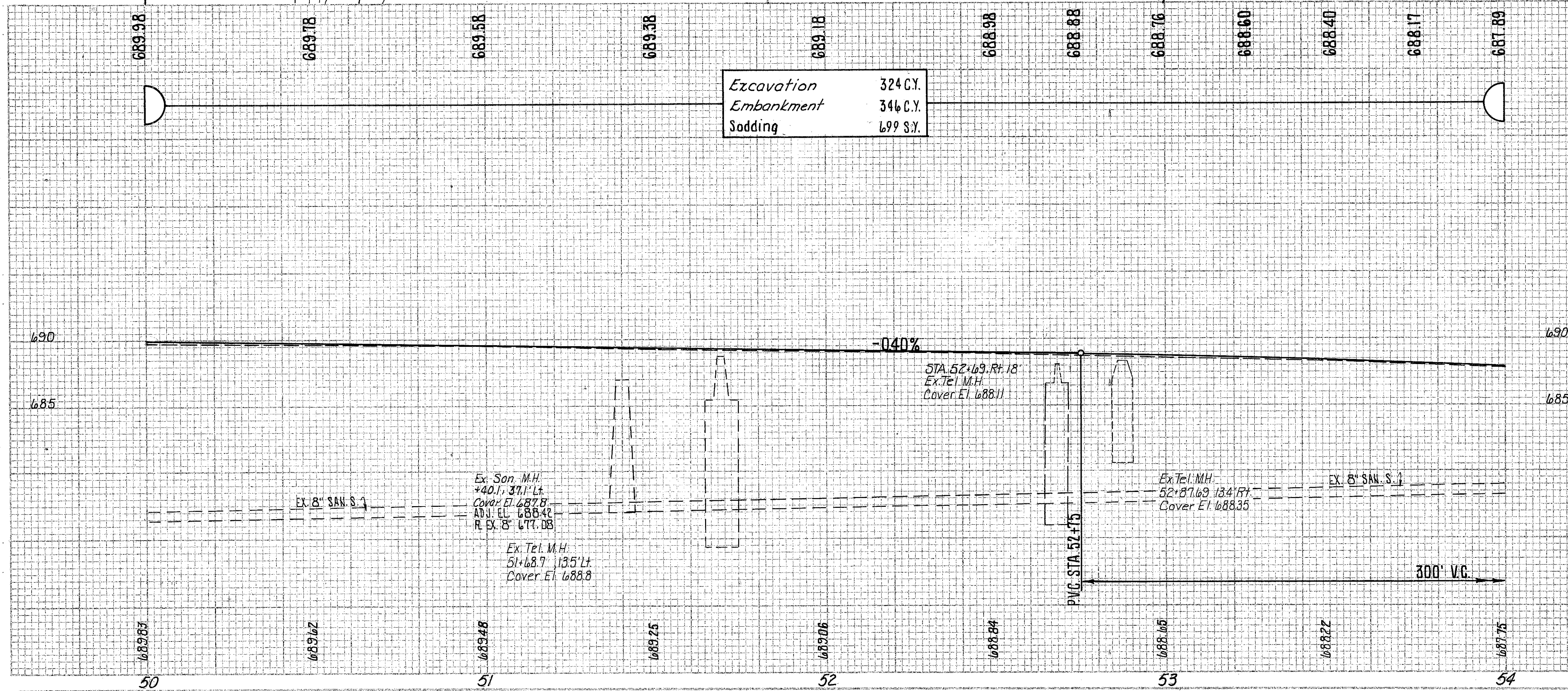
B.M. # 15 Elev. 688.95  
Sta. 53+79.41 40.4' Rt.  
Spike in guardrail post on E. side of asph. appr.  
on S. side of U.S. 20 to Mentor Green Mobile Estates.

LEGEND

- 6" ITEM 452
- 8" ITEM 452
- 1" ITEM 404 ON 5" ITEM 301
- 1" ITEM 404 ON 4" ITEM 301
- ITEM 202 - WEARING COURSE REMOVED

NOTES:

1. FOR STORM SEWER PROFILES SEE SHEET NO. 76.
2. FOR PAVEMENT, DRIVES, SIDEWALK, CURB & GUTTER, QUANTITIES SEE CALCULATIONS SHEET NO. 14.
3. FOR CROSS SECTIONS SEE SHEET NO. 44-45.
4. FOR DRIVE DETAIL SEE SHEET NO. 22.



Excavation	324 C.Y.
Embankment	346 C.Y.
Sodding	699 S.Y.

REF.	STATION TO STATION	SIDE	202		604				
			CATCH BASIN REMOVED	GUARDRAIL POSTS REMOVED	MANHOLE ADJUSTED TO GRADE SANITARY				
D-1	51+40	LT.	EA.	EA.	EA.				
R-1	53+00	LT.	1						
R-2	53+00	RT.	1						
R-3	53+84 TO 53+94	RT.		2					
TOTALS			2	2	1				