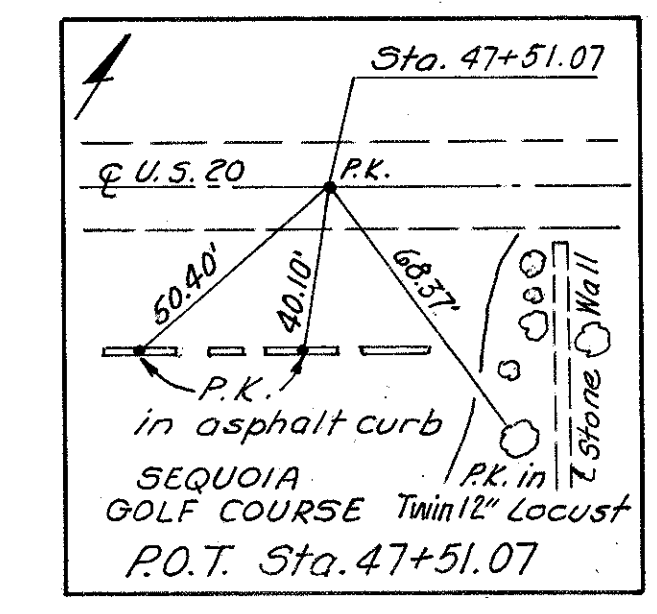


LAKE COUNTY
LAK-20-6.65

CALC: PCB 9-83
CHK: ROB 9-83



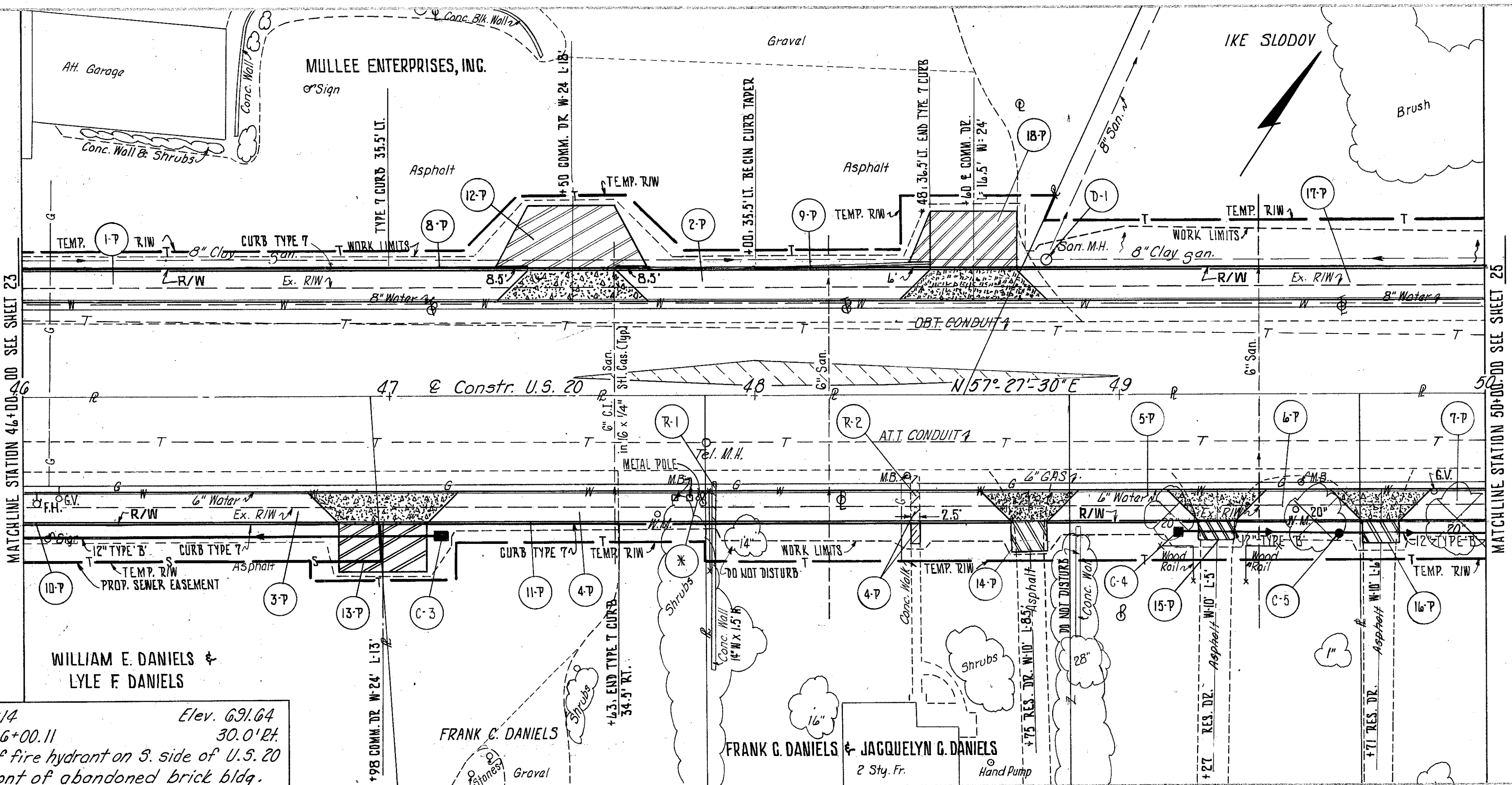
LEGEND

	6" ITEM 452
	8" ITEM 452
	1" ITEM 404 ON 4" ITEM 301
	1" ITEM 404 ON 5" ITEM 301
	ITEM 202 - WALK REMOVED
	ITEM 202 - WEARING COURSE REMOVED

CALCULATIONS
R-2 (19.0 x 2.5) = 47.5 S.F.

- NOTES:
- FOR STORM SEWER PROFILES SEE SHEET NO. 76
 - FOR PAVEMENT, DRIVES, SIDEWALK, CURB & GUTTER QUANTITIES SEE CALCULATIONS SHEET NO. 14.
 - FOR CROSS SECTIONS SEE SHEET NO. 43-44
 - FOR DRIVE DETAIL SEE SHEET NO. 22.
 - R-1 REMOVE 13.5 L.F. FROM NORTH END OF CONCRETE WALL TO WORK LIMITS.
 - * TO BE REMOVED UNDER ITEM 201 CLEARING AND GRUBBING

REF.	STATION TO STATION	SIDE	202		604	
			PORTIONS OF STRUCTURES REMOVED	WALK REMOVED	SAN. MANHOLE RECONSTRUCTED TO GRADE	
D-1	48+80	LT.	LUMP	L.F.	EA.	
R-1	47+83	RT.	LUMP			
R-2	48+43	RT.		47.5		
TOTALS			LUMP	47.5	1	



B.M. #14
Sta. 46+00.11
Top of fire hydrant on S. side of U.S. 20 in front of abandoned brick bldg.
Elev. 691.64
30.0' dia.

Excavation	119 C.Y.
Embankment	219 C.Y.
Sodding	291 S.Y.

EX. SAN. M.H.
STA. 48+80: 37' LT.
COVER EL. 687.80
RECON. EL. 689.74
R. EX. 8" N. 676.00
R. EX. 8" E. 675.78
R. EX. 8" N. 675.04

