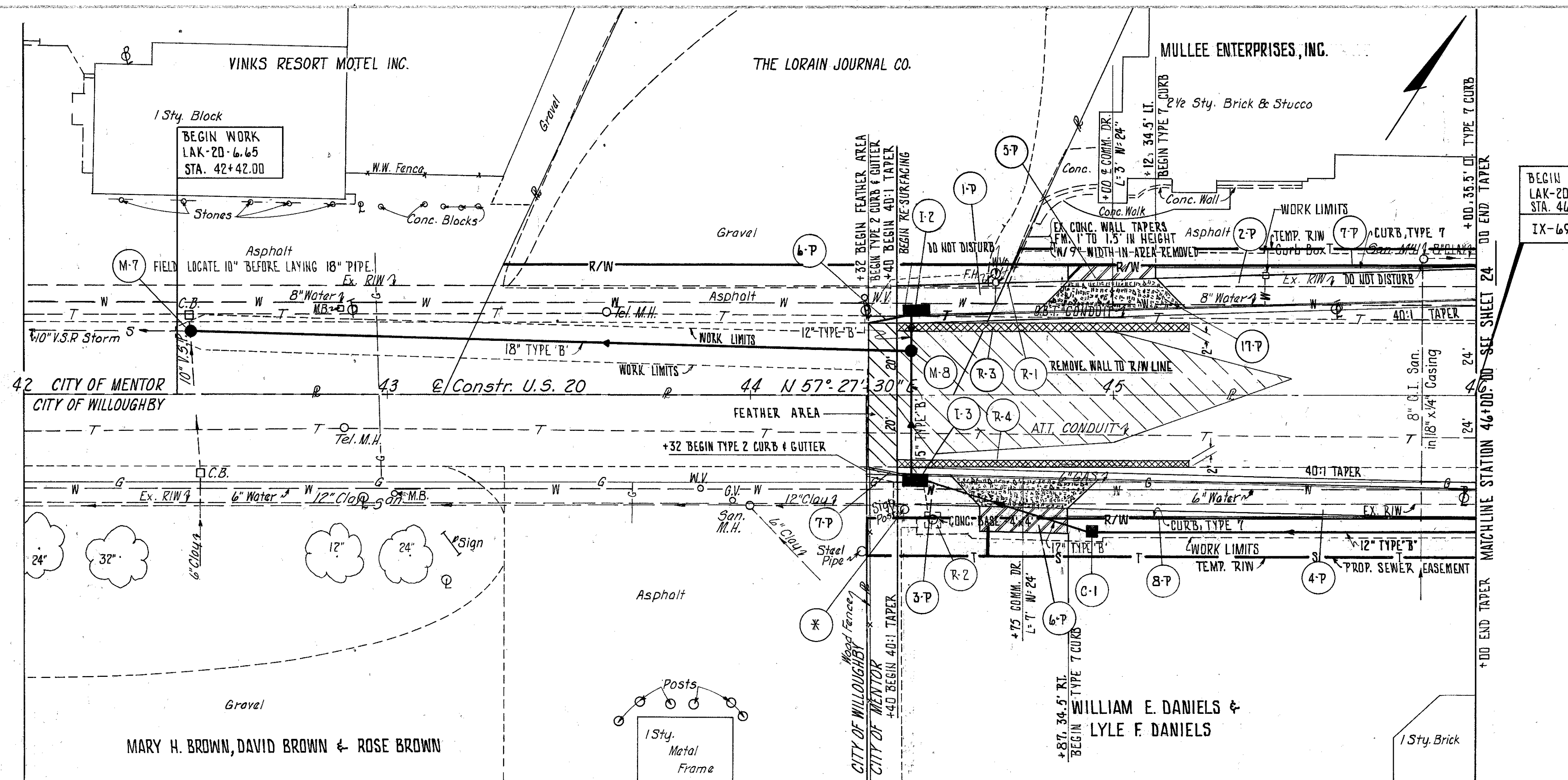
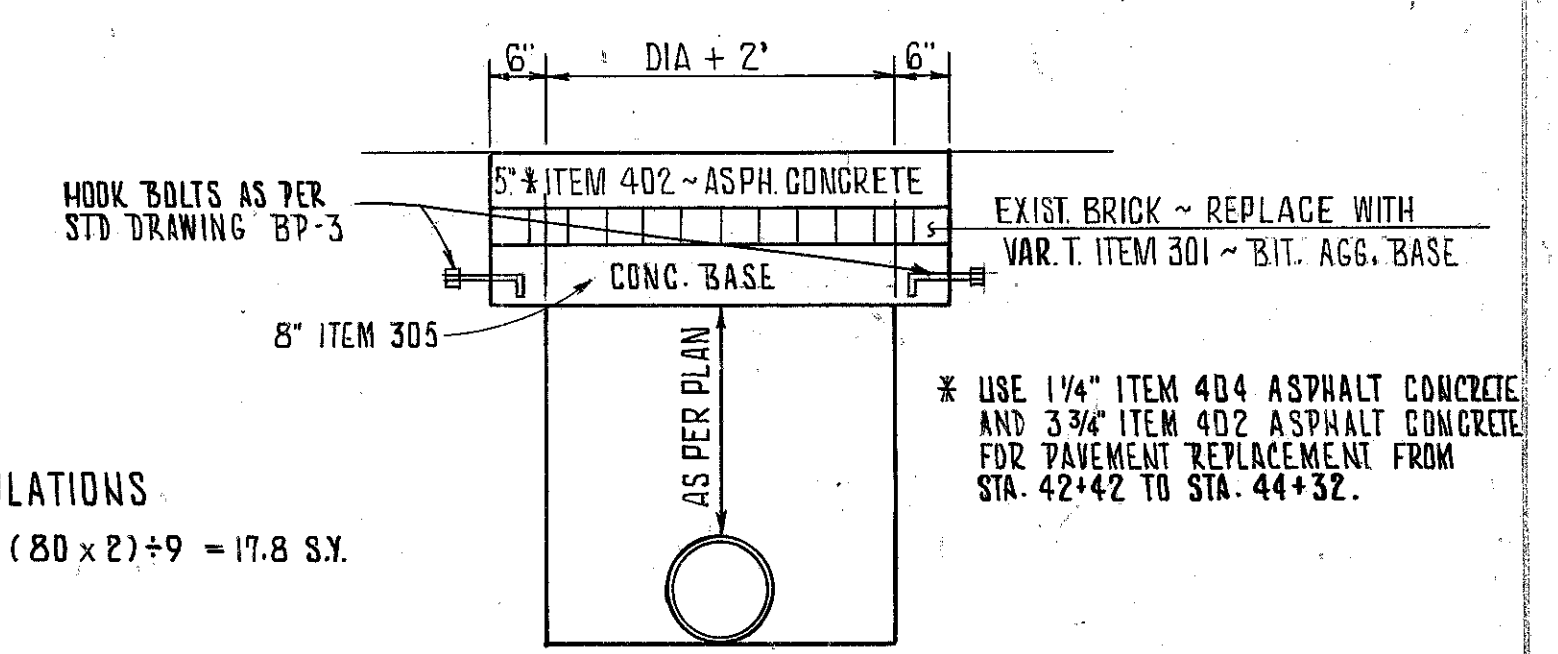


CALC: PCB 9-83
CHK: ROE 9-83

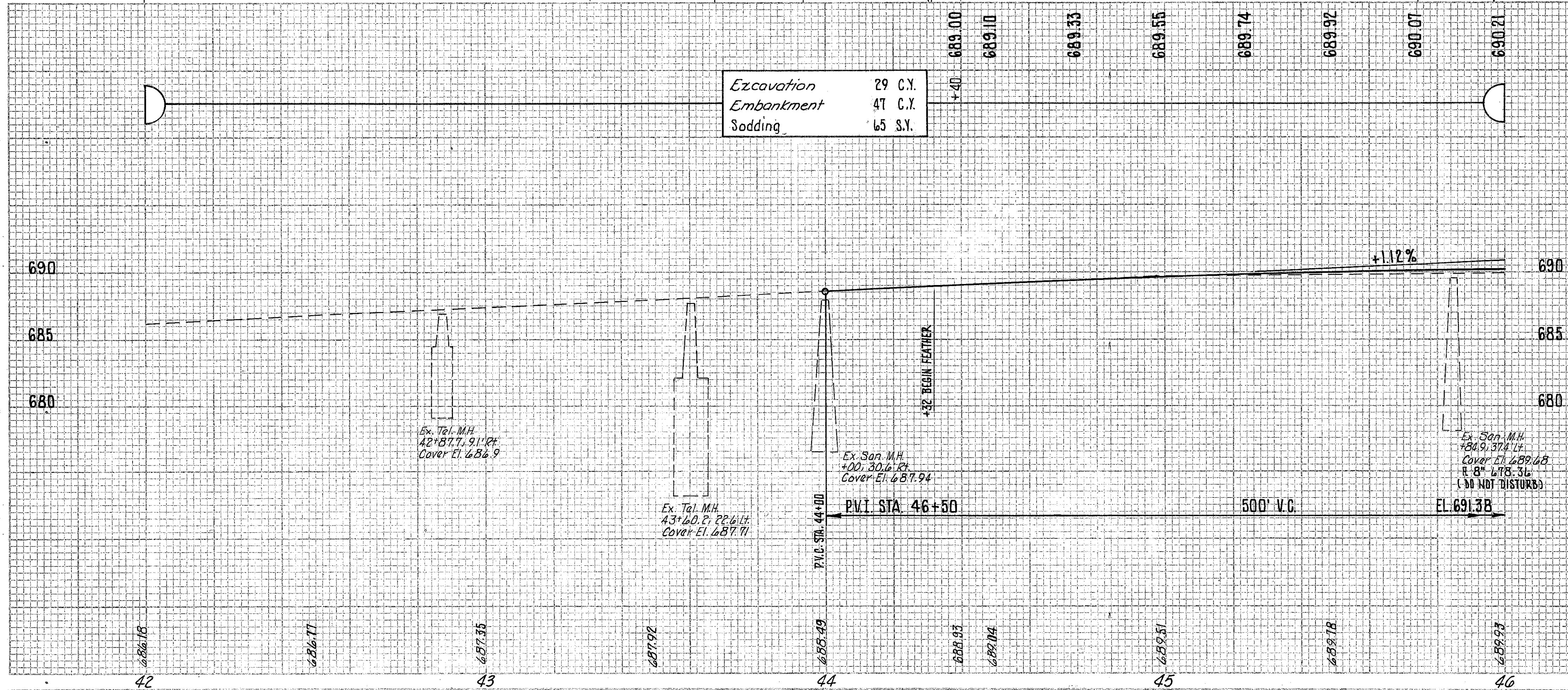


- LEGEND**
- 8" ITEM 452
 - 1" ITEM 404 ON 5" ITEM 301
 - ITEM 202 WEARING COURSE REMOVED
 - ITEM 202 PAVEMENT REMOVED
 - FEATHER AREA



CALCULATIONS
R-3 AND R-4 (80 x 2) ÷ 9 = 17.8 S.Y.

- NOTE:**
1. FOR STORM SEWER PROFILES SEE SHEET NO. 76
 2. FOR PAV'T, DRIVE, SIDEWALK, CURB & GUTTER QUANTITIES SEE CALCULATIONS SHEET NO. 14
 3. FOR CROSS SECTIONS SEE SHEET NO. 43
 4. FOR DRIVE DETAILS SEE SHEET NO. 22
 5. FOR PAVEMENT DETAILS SEE SHEET NO. 15
 6. * TO BE REMOVED UNDER ITEM 201 CLEARING AND GRUBBING
 7. TAPER 6-P AND 7-P HEIGHT FROM 0" TO 6" AT INLET
 8. FOR ADJACENT TYPICAL SECTION SEE SHEET NO. 3



REF.	STATION TO STATION	SIDE	202		PAVEMENT REMOVED				
			PORTIONS OF STRUCTURES REMOVED	STRUCTURES REMOVED					
R-1	44+71	LT.	LUMP	LUMP	S.Y.				
R-2	44+51	RT.	LUMP	LUMP					
R-3	44+40 TO 45+20	LT.			17.8				
R-4	44+40 TO 45+20	RT.			17.8				
TOTALS			LUMP	LUMP	36				