

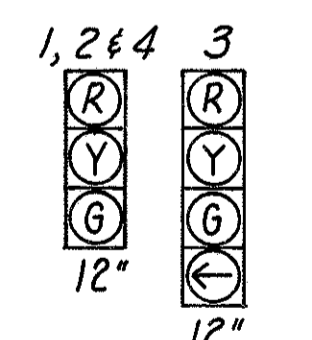
COLOR SEQUENCE CHART

SIGNAL NO.	LENS	DIAL SETTINGS (Seconds)					
		20	3	10	3	41	3
		INTERVAL					
		1	2	3	4	5	6
1	R	(2)					
	Y	(1)					
	G						
2	R						
	Y						
	G						
3	R	(2)					
	Y	(1)					
	G						
4	R						
	Y						
	G						
Offset 1		2 Seconds					
Offset 2		54 Seconds					
Offset 3		25 Seconds					

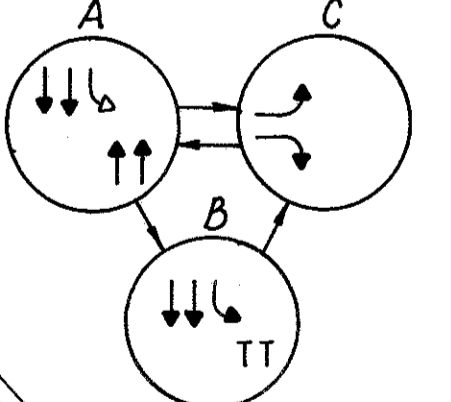
Offset 1 = Average
Offset 2 = Inbound
Offset 3 = Outbound

(1) ØA to ØB Clearance Interval
(2) ØA to ØC Clearance Interval

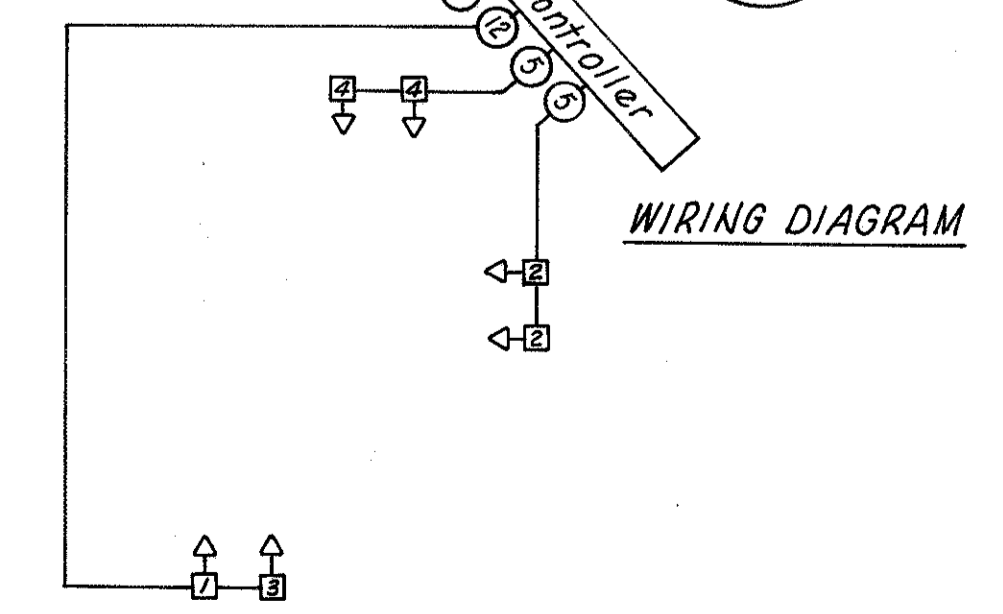
SIGNALS



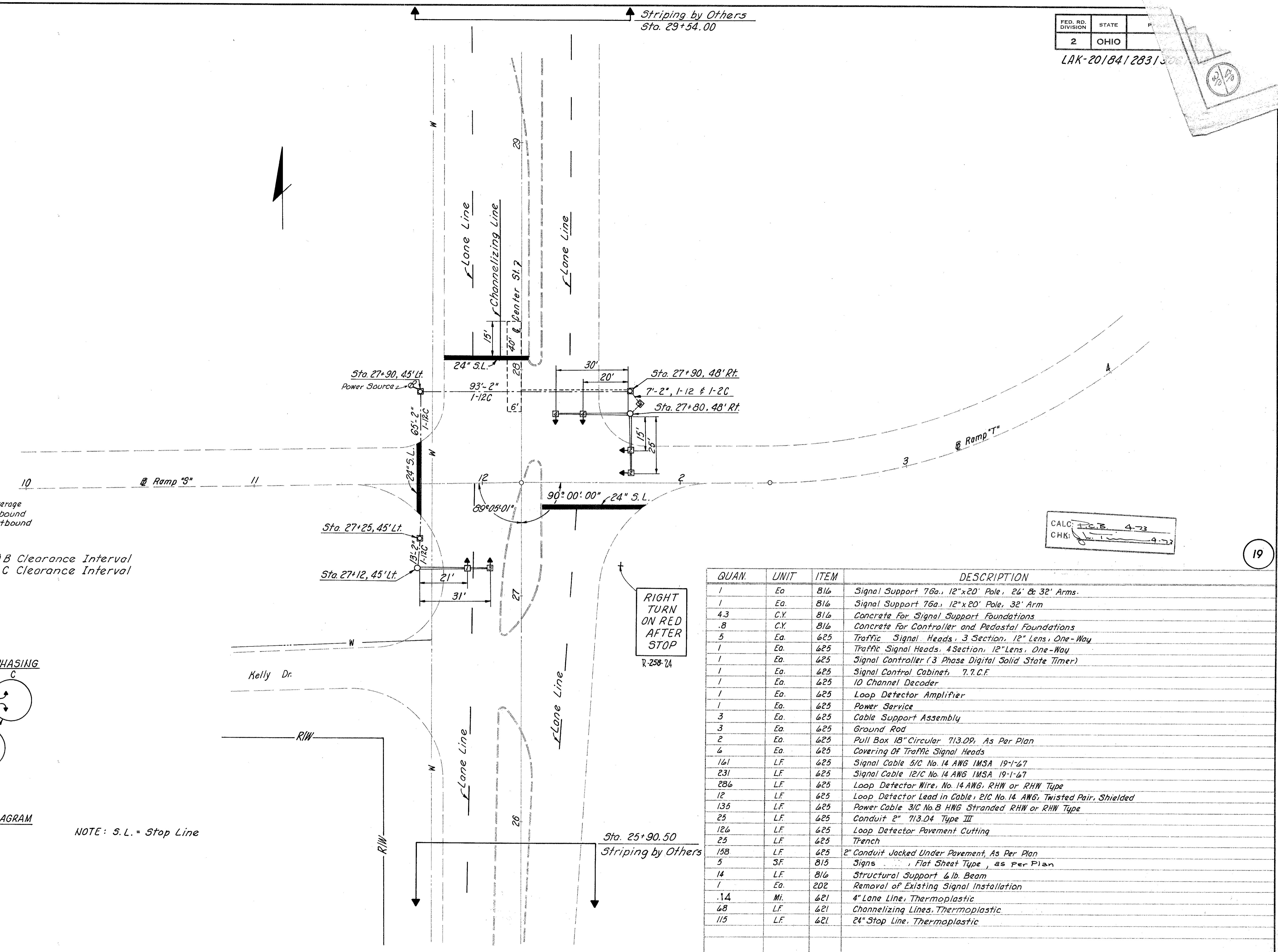
SIGNAL PHASING



WIRING DIAGRAM



NOTE: S.L. = Stop Line



CALC: J.C.B. 4-73
CHK: J.C.B. 4-73

QUAN.	UNIT	ITEM	DESCRIPTION
1	Ea	816	Signal Support 76a., 12"x20' Pole, 26' & 32' Arms.
1	Ea.	816	Signal Support 76a., 12"x20' Pole, 32' Arm
4.3	C.Y.	816	Concrete For Signal Support Foundations
.8	C.Y.	816	Concrete For Controller and Pedestal Foundations
5	Ea.	625	Traffic Signal Heads, 3 Section, 12" Lens, One-Way
1	Ea.	625	Traffic Signal Heads, 4 Section, 12" Lens, One-Way
1	Ea.	625	Signal Controller (3 Phase Digital Solid State Timer)
1	Ea.	625	Signal Control Cabinet, 7.7.C.F.
1	Ea.	625	10 Channel Decoder
1	Ea.	625	Loop Detector Amplifier
1	Ea.	625	Power Service
3	Ea.	625	Cable Support Assembly
3	Ea.	625	Ground Rod
2	Ea.	625	Pull Box 18" Circular 713.09, As Per Plan
4	Ea.	625	Covering Of Traffic Signal Heads
161	LF.	625	Signal Cable 5/C No. 14 AWG 1MSA 19-1-67
231	LF.	625	Signal Cable 12/C No. 14 AWG 1MSA 19-1-67
286	LF.	625	Loop Detector Wire, No. 14 AWG, RHW or RHW Type
12	LF.	625	Loop Detector Lead in Cable, 2/C No. 14 AWG, Twisted Pair, Shielded
135	LF.	625	Power Cable 3/C No. 8 HWG Stranded RHW or RHW Type
25	LF.	625	Conduit 2" 713.D4 Type III
126	LF.	625	Loop Detector Pavement Cutting
25	LF.	625	Trench
158	LF.	625	2" Conduit Jacked Under Pavement, As Per Plan
5	SF.	815	Signs, Flat Sheet Type, as per Plan
14	LF.	816	Structural Support 6lb. Beam
1	Ea.	202	Removal of Existing Signal Installation
.14	Mi.	621	4" Lane Line, Thermoplastic
68	LF.	621	Channelizing Lines, Thermoplastic
115	LF.	621	24" Stop Line, Thermoplastic