

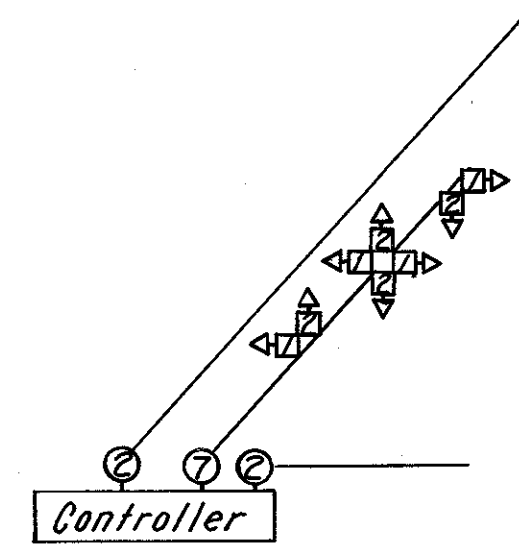
**COLOR SEQUENCE CHART**

SIGNAL NO.	LENS	DIAL SETTINGS (Seconds)			
		59	3	15	3
		INTERVAL			
1	R				
	Y				
2	R				
	Y				

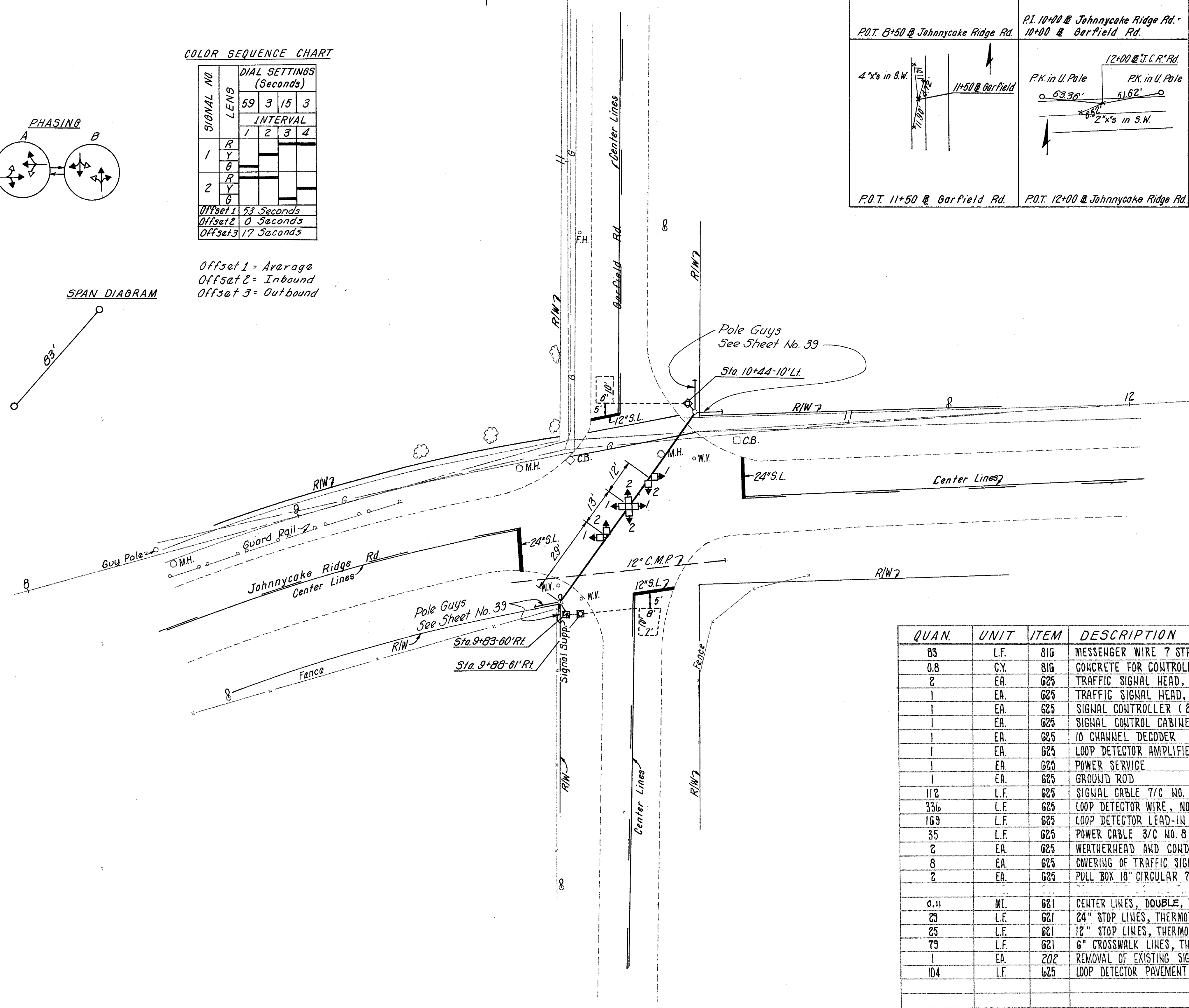
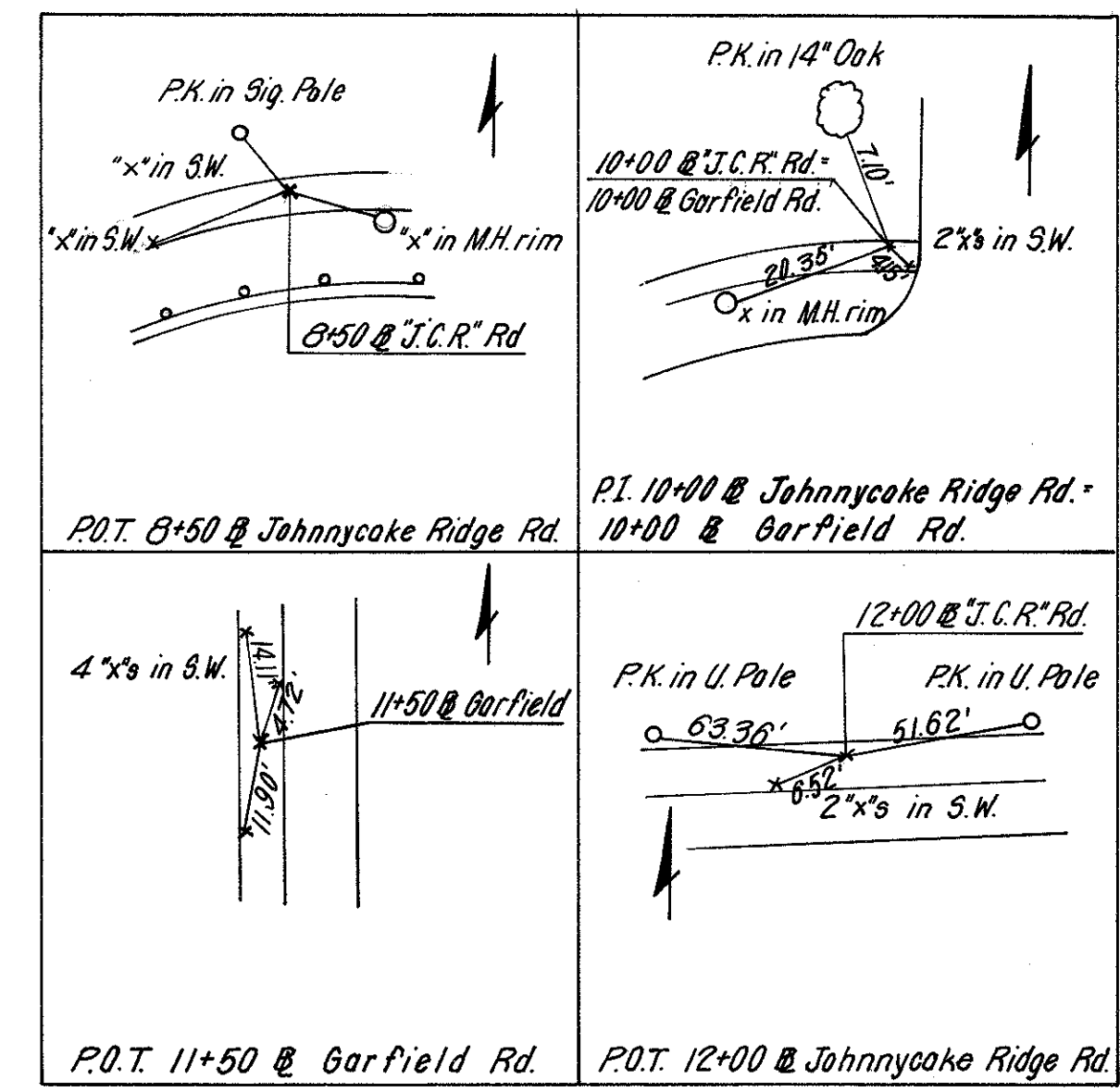
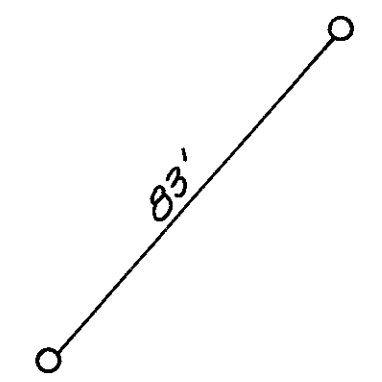
Offset 1 = 53 Seconds  
Offset 2 = 0 Seconds  
Offset 3 = 17 Seconds

Offset 1 = Average  
Offset 2 = Inbound  
Offset 3 = Outbound

**WIRING DIAGRAM**



**SPAN DIAGRAM**



CALC: P.C.S. 4-73  
CHK: [Signature] 4-73

QUAN.	UNIT	ITEM	DESCRIPTION
85	L.F.	816	MESSENGER WIRE 7 STRAND 3/8" WITH ACCESSORIES
0.8	C.Y.	816	CONCRETE FOR CONTROLLER AND PEDESTAL FOUNDATION
2	EA.	G25	TRAFFIC SIGNAL HEAD, 3 SECTION, 3-12 LENS, 3-B LENS, TWO WAY
1	EA.	G25	TRAFFIC SIGNAL HEAD, 3 SECTION, 6-12 LENS, 6-B LENS, FOUR WAY
1	EA.	G25	SIGNAL CONTROLLER (2 PHASE DIGITAL SOLID STATE TRAFFIC TIMER)
1	EA.	G25	SIGNAL CONTROL CABINET, 7.7 C.F.
1	EA.	G25	10 CHANNEL DECODER
1	EA.	G25	LOOP DETECTOR AMPLIFIER
1	EA.	G25	POWER SERVICE
1	EA.	G25	GROUND ROD
112	L.F.	G25	SIGNAL CABLE 7/C NO. 14 AWG IMSA 19-1-67
336	L.F.	G25	LOOP DETECTOR WIRE, NO. 14 AWG RHW OR RHW TYPE
169	L.F.	G25	LOOP DETECTOR LEAD-IN CABLE, 2/C NO. 14 AWG, TWISTED PAIR, SHIELDED
35	L.F.	G25	POWER CABLE 3/C NO. 8 AWG STRANDED RHW OR RHW TYPE
2	EA.	G25	WEATHERHEAD AND CONDUIT RISER
8	EA.	G25	COVERING OF TRAFFIC SIGNAL HEADS
2	EA.	G25	PULL BOX 18" CIRCULAR 713.09, AS PER PLAN
0.11	MI.	G21	CENTER LINES, DOUBLE, THERMOPLASTIC (SOLID-DASHED)
23	L.F.	G21	24" STOP LINES, THERMOPLASTIC
25	L.F.	G21	12" STOP LINES, THERMOPLASTIC
75	L.F.	G21	6" CROSSWALK LINES, THERMOPLASTIC
1	EA.	202	REMOVAL OF EXISTING SIGNAL INSTALLATION
104	L.F.	G25	LOOP DETECTOR PAVEMENT CUTTING