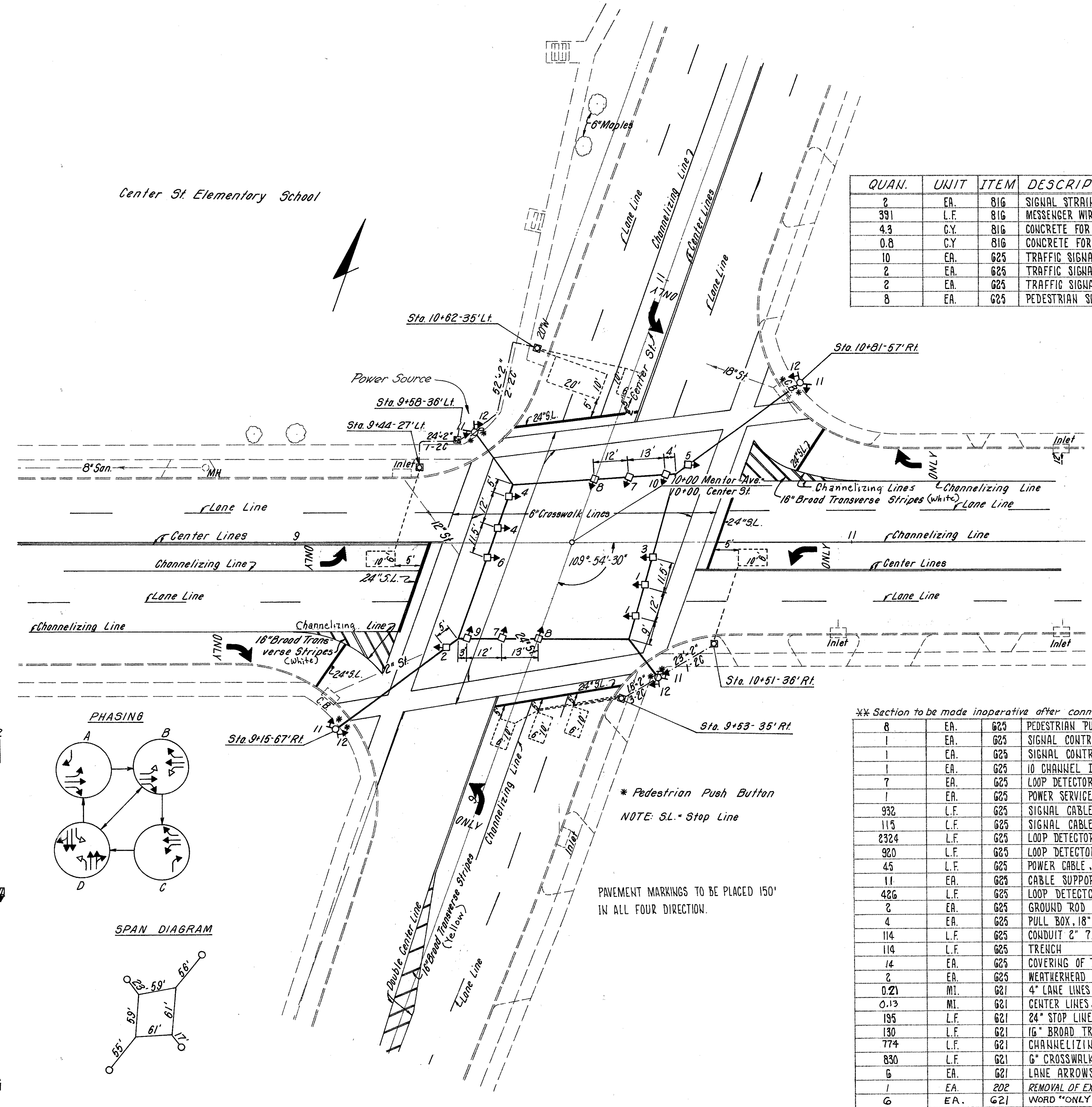
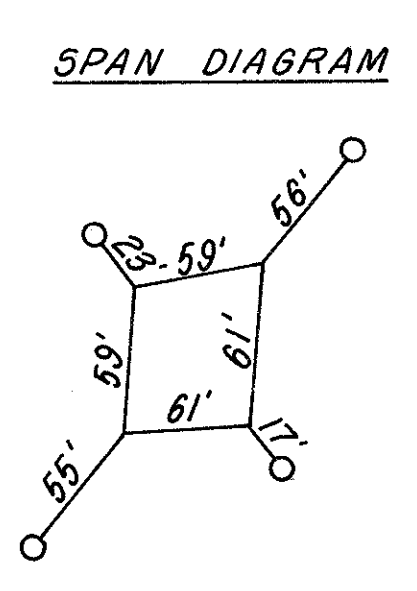
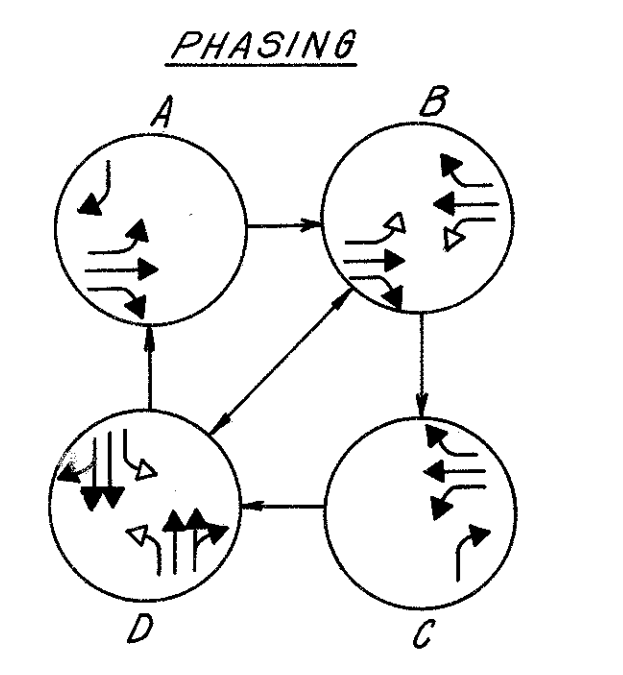
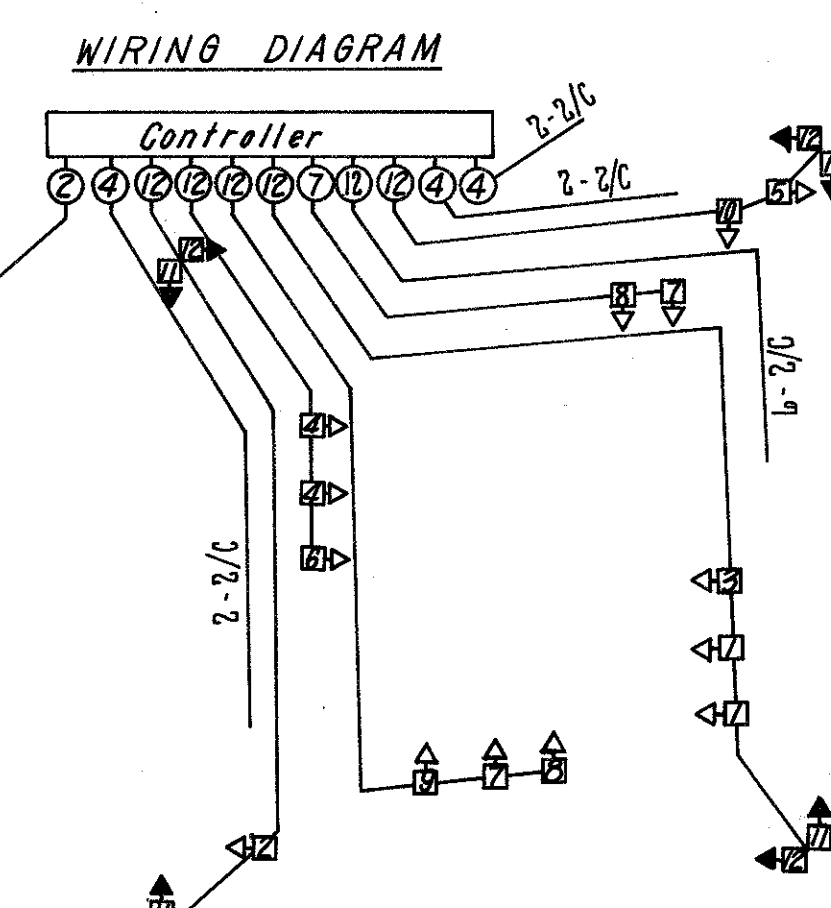
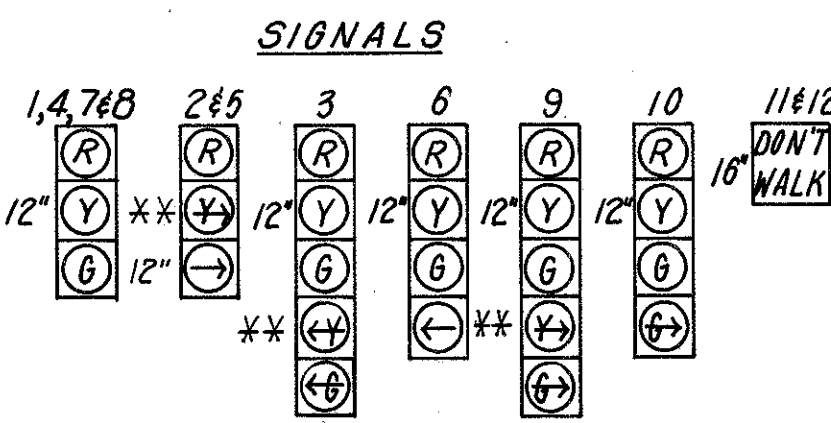


COLOR SEQUENCE CHART

SIGNAL NO.	LENS	DIAL SETTINGS (SECONDS)									
		7	2	7	19	4	7	2	7	21	4
		INTERVAL									
		1	2	3	4	5	6	7	8	9	10
1	R										
	Y										
	G										
2	Y										
	R										
	G										
3	Y										
	R										
	G										
4	Y					(2)					
	R					(1)					
	G										
5	Y					(2)					
	R					(1)					
	G										
6	Y					(2)					
	R					(1)					
	G										
7	Y										
	R										
	G										
8	Y										
	R										
	G										
9	Y										
	R										
	G										
10	Y										
	R										
	G										
11	Y										
	R										
	G										
12	Y										
	R										
	G										

Offset 1 = Average
Offset 2 = Inbound
Offset 3 = Outbound

- (1) Ø B to Ø C Clearance Interval
- (2) Ø B to Ø D Clearance Interval
- F = Flashing "DON'T WALK"



QUAN.	UNIT	ITEM	DESCRIPTION
2	EA.	816	SIGNAL STRAIN POLE, 0 GA., 12" x 30'
391	L.F.	816	MESSENGER WIRE, 7 STRAND 3/8" WITH ACCESSORIES
4.3	C.Y.	816	CONCRETE FOR SIGNAL SUPPORT FOUNDATIONS
0.8	C.Y.	816	CONCRETE FOR CONTROLLER AND PEDESTAL FOUNDATIONS
10	EA.	G25	TRAFFIC SIGNAL HEADS, 3 SECTION, 12" LENS, ONE-WAY
2	EA.	G25	TRAFFIC SIGNAL HEADS, 4 SECTION, 12" LENS, ONE-WAY
2	EA.	G25	TRAFFIC SIGNAL HEADS, 5 SECTION, 12" LENS, ONE-WAY
8	EA.	G25	PEDESTRIAN SIGNAL HEAD, INCANDESCENT COLORED BULB, 4 1/2" LETTER

QUANTITIES CONTINUED BELOW

CALC: J.C.B. 4-73
CHK: J.C.B. 4-73

** Section to be made inoperative after connection.

8	EA.	G25	PEDESTRIAN PUSH BUTTON WITH SIGN
1	EA.	G25	SIGNAL CONTROLLER (4 PHASE DIGITAL SOLID STATE TRAFFIC TIMER)
1	EA.	G25	SIGNAL CONTROL CABINET, 7.7 C.F.
1	EA.	G25	10 CHANNEL DECODER
7	EA.	G25	LOOP DETECTOR AMPLIFIER
1	EA.	G25	POWER SERVICE
932	L.F.	G25	SIGNAL CABLE, 12/C NO. 14 AWG, IMSA 19-1-67
115	L.F.	G25	SIGNAL CABLE, 7/C NO. 14 AWG, IMSA 19-1-67
2324	L.F.	G25	LOOP DETECTOR LEAD-IN CABLE, 2/C NO. 14 AWG, TWISTED PAIR, SHIELDED
920	L.F.	G25	LOOP DETECTOR WIRE, NO. 14 AWG, RHW OR RHW TYPE
45	L.F.	G25	POWER CABLE, 3/C NO. 8 AWG STRANDED RHW OR RHW TYPE
11	EA.	G25	CABLE SUPPORT ASSEMBLY
426	L.F.	G25	LOOP DETECTOR PAVEMENT CUTTING
2	EA.	G25	GROUND ROD
4	EA.	G25	PULL BOX, 18" CIRCULAR 713.03, AS PER PLAN
114	L.F.	G25	CONDUIT 2" 713.04, TYPE III
114	L.F.	G25	TRENCH
14	EA.	G25	COVERING OF TRAFFIC SIGNAL HEADS
2	EA.	G25	WEATHERHEAD AND CONDUIT RISER
0.21	MI.	G21	4" LANE LINES, THERMOPLASTIC
0.13	MI.	G21	CENTER LINES, DOUBLE THERMOPLASTIC (SOLID)
195	L.F.	G21	24" STOP LINES, THERMOPLASTIC
130	L.F.	G21	16" BROAD TRANSVERSE STRIPES
774	L.F.	G21	CHANNELIZING LINES, THERMOPLASTIC
830	L.F.	G21	6" CROSSWALK LINES, THERMOPLASTIC
6	EA.	G21	LANE ARROWS, THERMOPLASTIC
1	EA.	202	REMOVAL OF EXISTING SIGNAL INSTALLATION
6	EA.	G21	WORD "ONLY" ON PAVEMENT, THERMOPLASTIC