

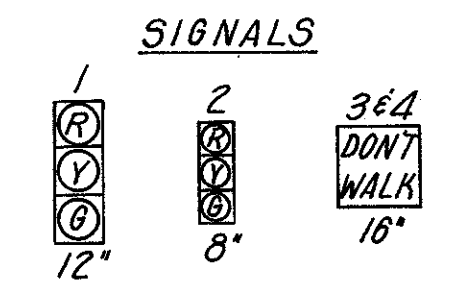
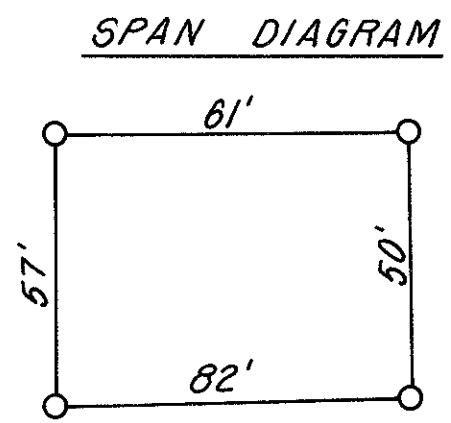
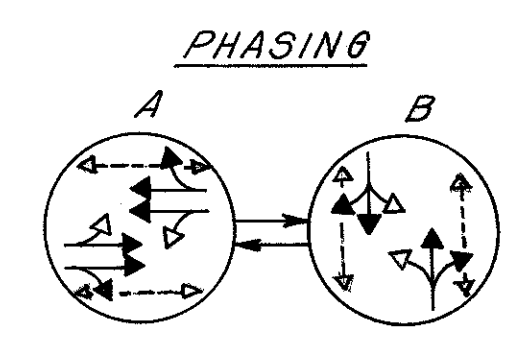
LAK-20/84/283/306/615

COLOR SEQUENCE CHART

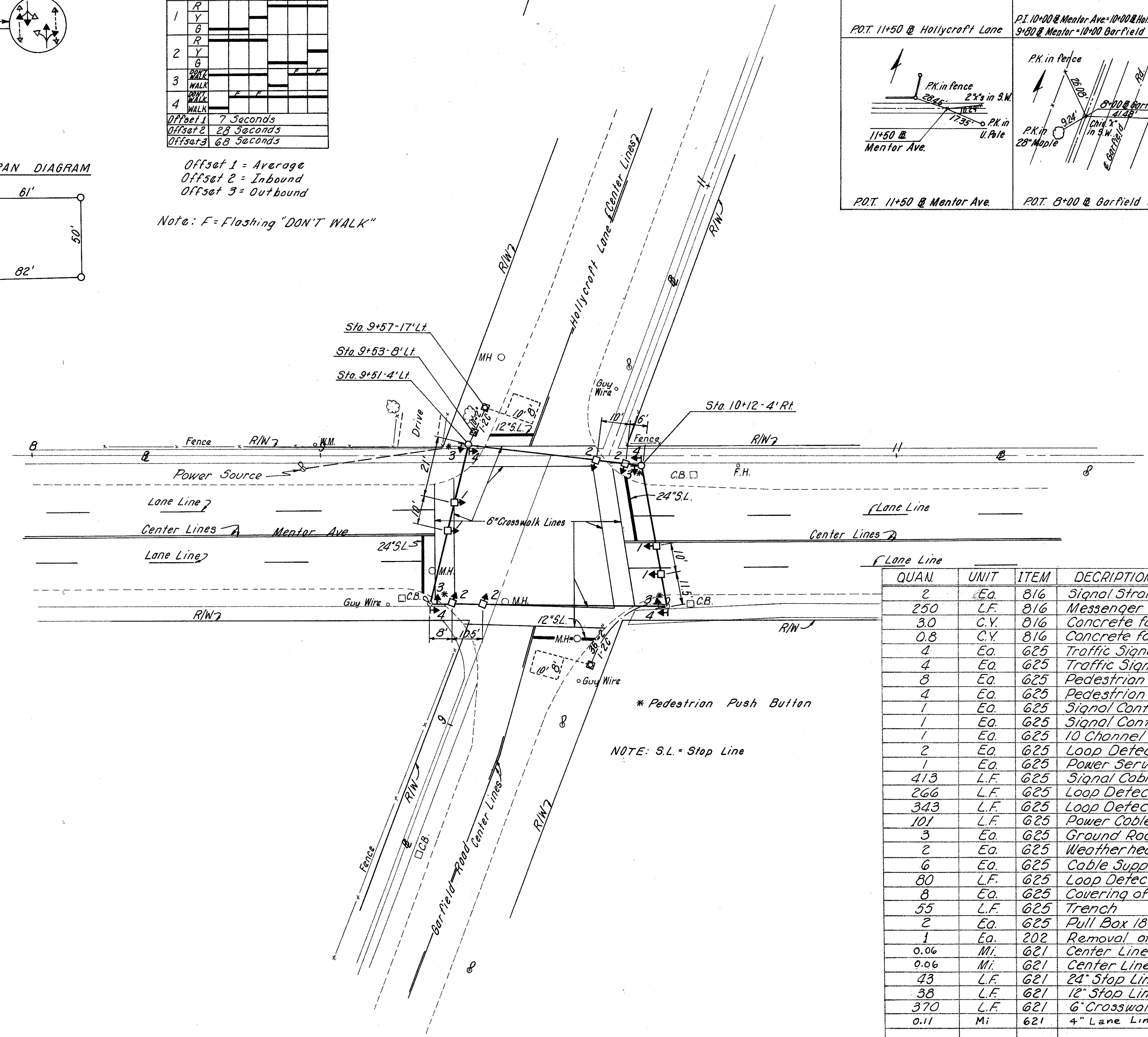
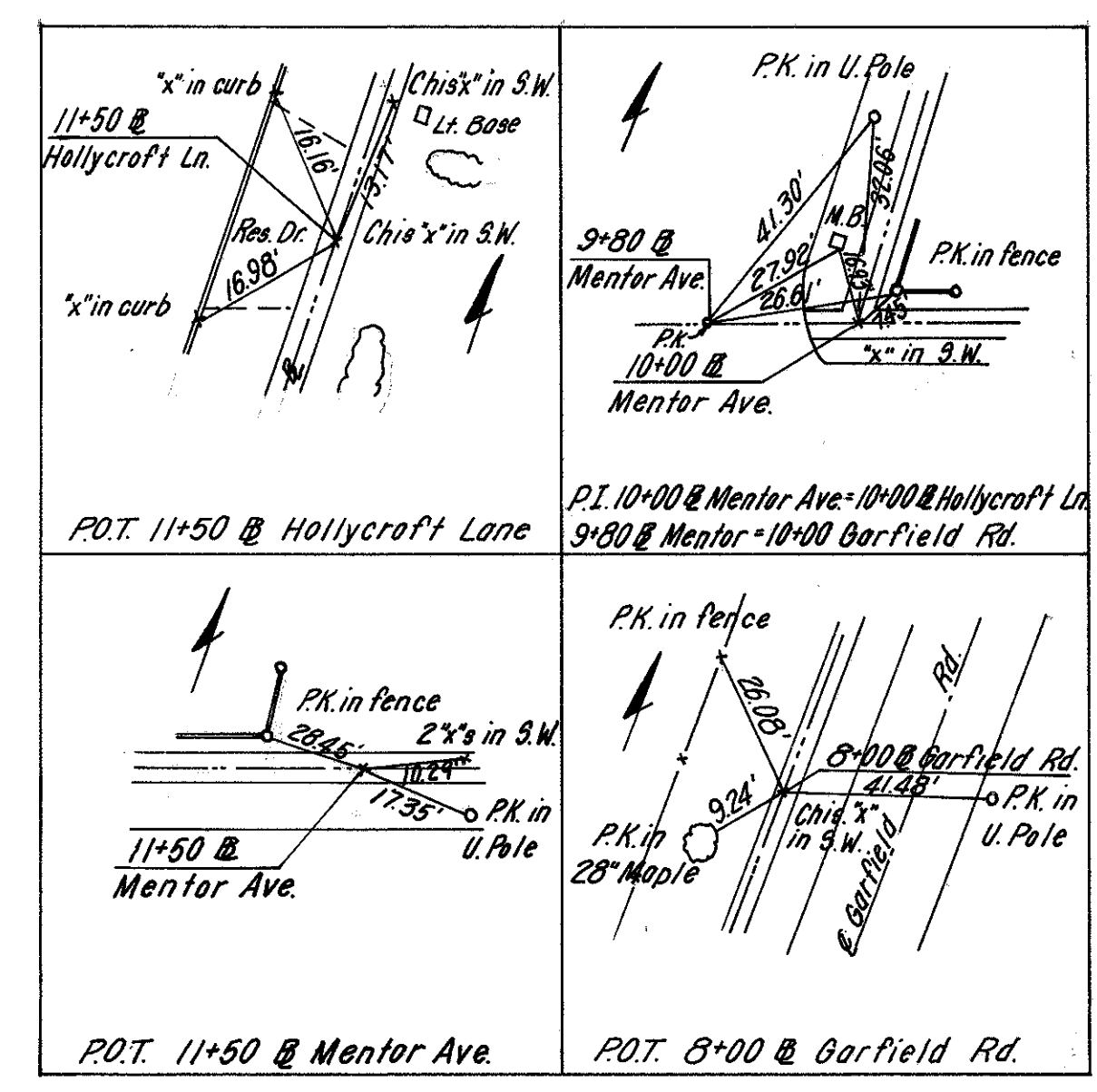
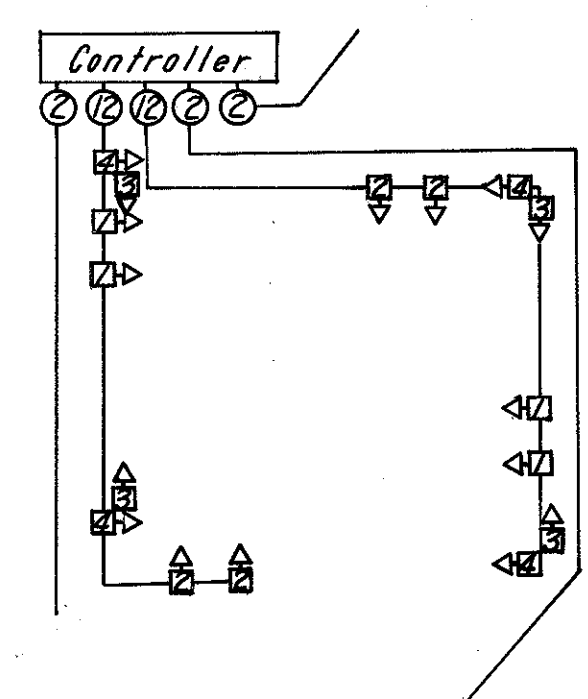
SIGNAL NO.	LENS	DIAL SETTINGS (Seconds)					
		1	2	3	4	5	6
1	R						
	Y						
2	R						
	Y						
3	R						
	Y						
4	R						
	Y						

Offset 1 = Average
Offset 2 = Inbound
Offset 3 = Outbound

Note: F = Flashing "DON'T WALK"



WIRING DIAGRAM



CALC: E.C.S. 4-23
CHK: J.L.V. 4-23

QUAN	UNIT	ITEM	DESCRIPTION
2	Ea.	816	Signal Strain Pole, 7 Ga. 9"x26"
250	L.F.	816	Messenger Wire, 7 Strand 3/8" with accessories
3.0	C.Y.	816	Concrete for Signal Support Foundations
0.8	C.Y.	816	Concrete for Controller & Pedestal
4	Ea.	625	Traffic Signal Head, 3 Section, 12" Lens, One Way
4	Ea.	625	Traffic Signal Head, 3 Section, 8" Lens, One Way
8	Ea.	625	Pedestrian Signal Head, Incandescent Colored Bulb, 4 1/2" Letters
4	Ea.	625	Pedestrian Pushbutton with Sign
1	Ea.	625	Signal Controller (2 Phase Digital Solid State Traffic Timer)
1	Ea.	625	Signal Control Cabinet, 7.7 CF
1	Ea.	625	10 Channel Decoder
2	Ea.	625	Loop Detector Amplifier
1	Ea.	625	Power Service
413	L.F.	625	Signal Cable 12/c No. 14 AWG 1M3A 19-1-67
266	L.F.	625	Loop Detector Wire, No. 14 AWG, RHW or RHW Type
343	L.F.	625	Loop Detector Lead-in Cable 2/c No. 14 AWG Twisted Pair, Shielded
101	L.F.	625	Power Cable 3/c No. 8 AWG Stranded RHW or RHW Type
3	Ea.	625	Ground Rod
2	Ea.	625	Weather head & Conduit Riser
6	Ea.	625	Cable Support Assembly
80	L.F.	625	Loop Detector Pavement Cutting
8	Ea.	625	Covering of Traffic Signal Heads
55	L.F.	625	Trench
2	Ea.	625	Pull Box 18" Circular 713.09 as per plan
1	Ea.	202	Removal of Existing Signal Installation
0.06	Mi.	621	Center Lines, Double, Thermoplastic (SOLID)
0.06	Mi.	621	Center Lines, Double, Thermoplastic (Solid - Dashed)
43	L.F.	621	24" Stop Lines, Thermoplastic
38	L.F.	621	12" Stop Lines, Thermoplastic
370	L.F.	621	6" Crosswalk Lines, Thermoplastic
0.11	Mi.	621	4" Lane Lines, Thermoplastic