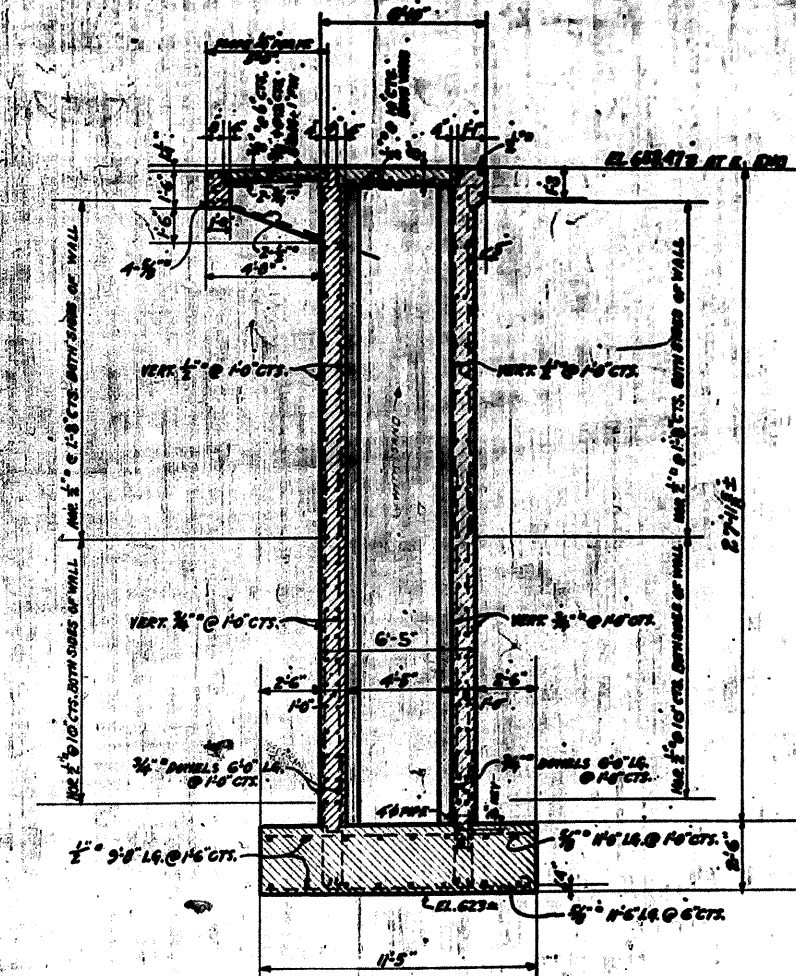
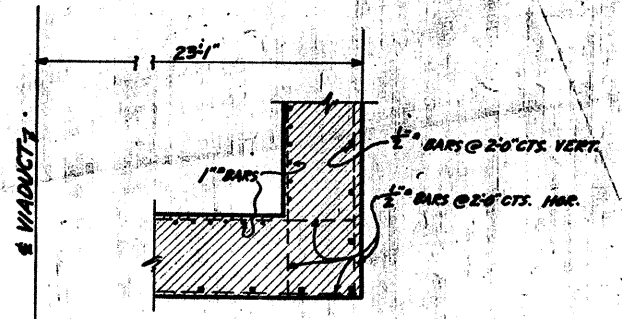


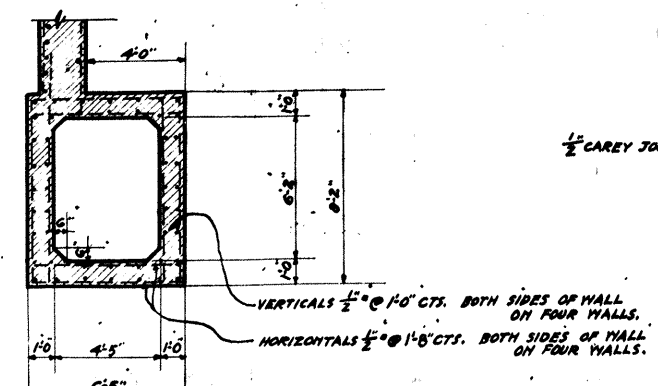
SECTION B-B



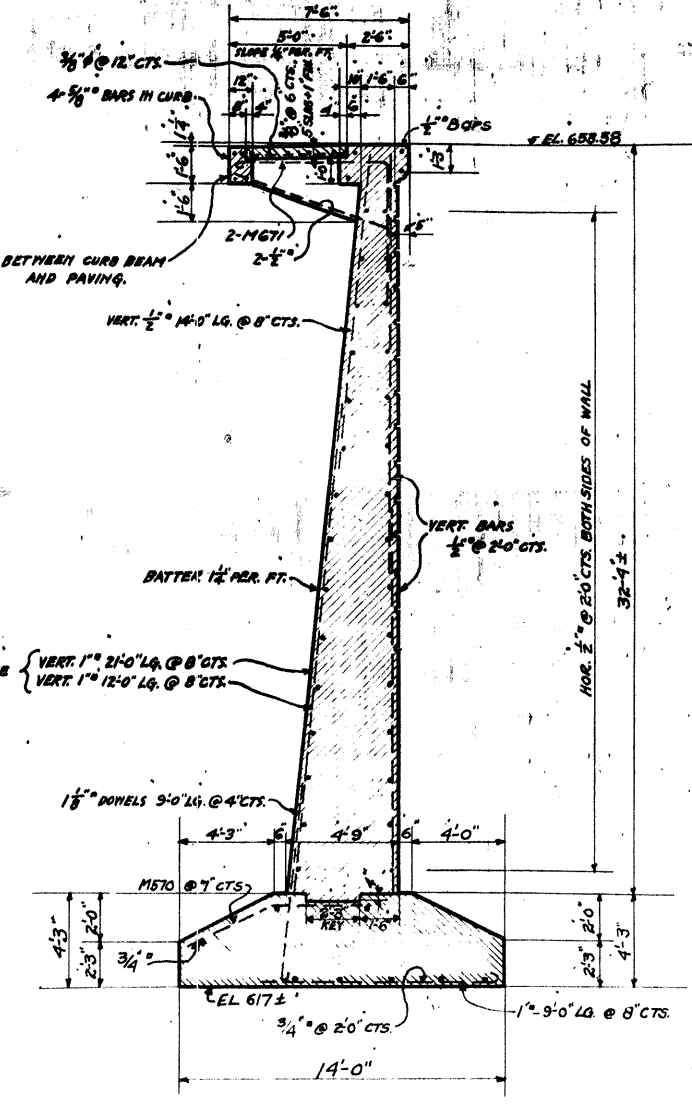
SECTION D-D



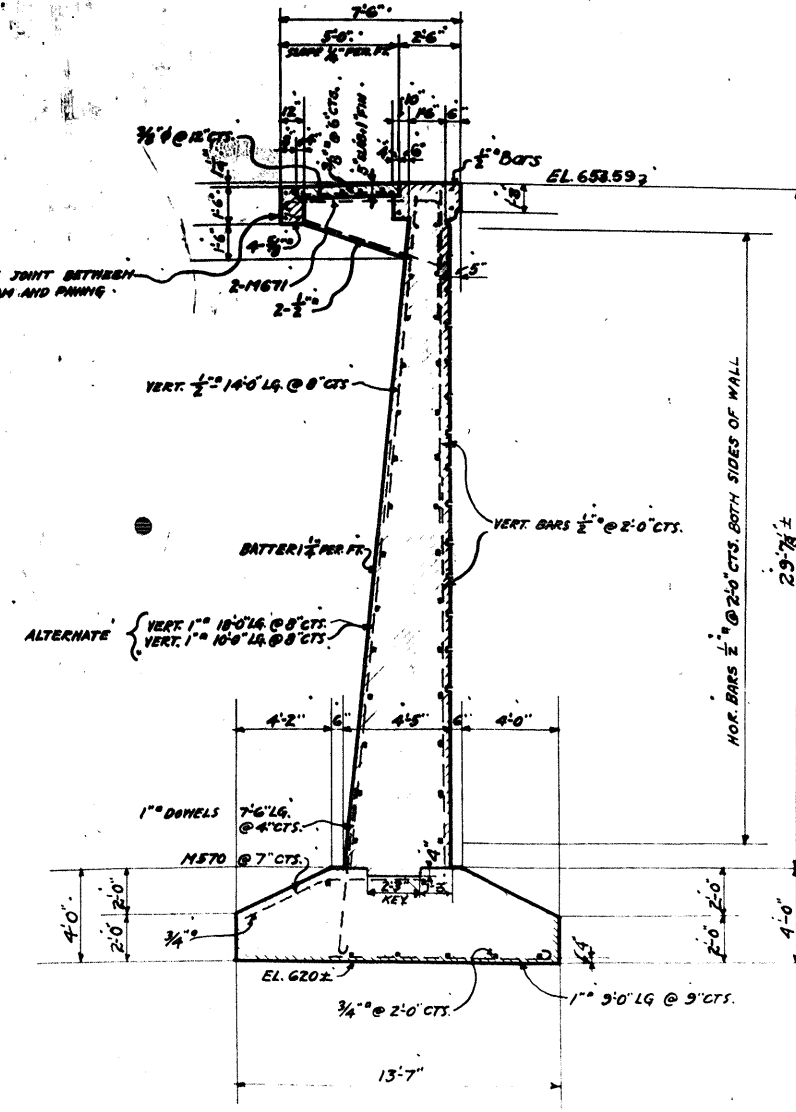
SECTION H-H
HORIZONTAL SECTION THRU FRONT CORNER OF ABUTMENT



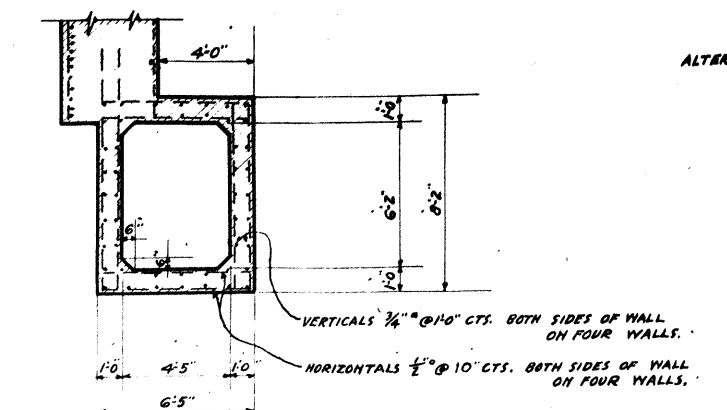
SECTION F-F



SECTION C-C



SECTION E-E



SECTION G-G

APPROVED July 21 1919
 J. C. Phillips } COUNTY COMMISSIONERS
 F. P. Freshley }
 H. C. Thompson }
 COUNTY AUDITOR
 C. L. Harris } COUNTY ENGINEER
 STATE HIGHWAY COMMISSIONER

NOTE
 FOR LOCATION OF SECTIONS
 SEE SHEET NO. 10.

THE WATSON ENGINEERING COMPANY CLEVELAND, OHIO.					
CHAGRIN RIVER VIADUCT. WILLOUGHBY, LAKE COUNTY, OHIO					
C. C. HARRIS COUNTY ENGINEER					
DETAILS OF EAST ABUTMENT					
DRAWING MADE	DRAWN BY	TRACED BY	CHECKED BY	DATE	APPROVED BY
JULY 20, 1919	E.M.	E.M.	F.L.G.	7-9-19	F.L.G.
REV. BY	DATE	REMARKS			
			SCALE 1/4"=1'-0"		
			PRINT MADE		