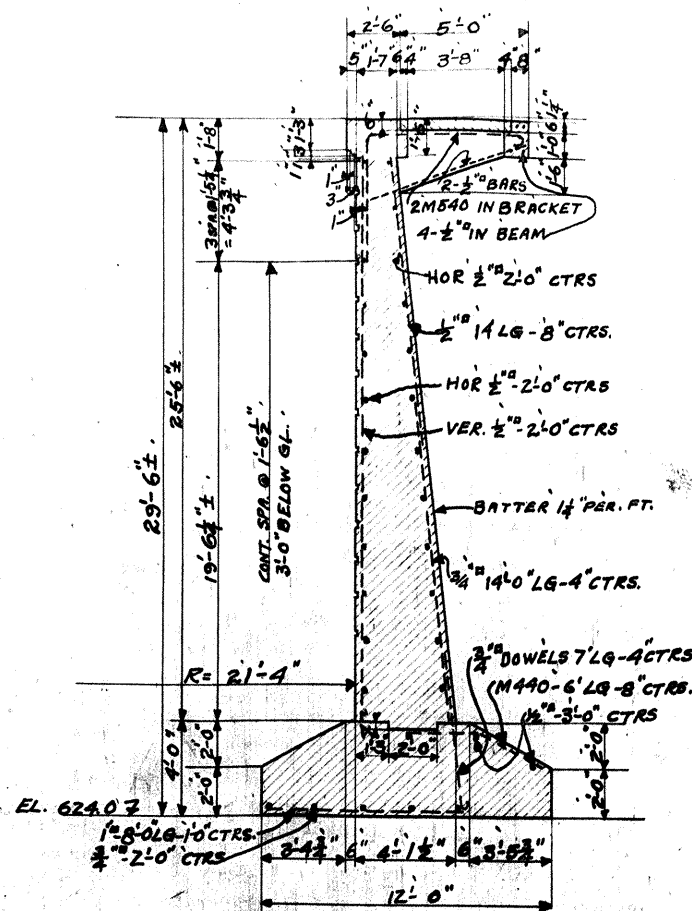
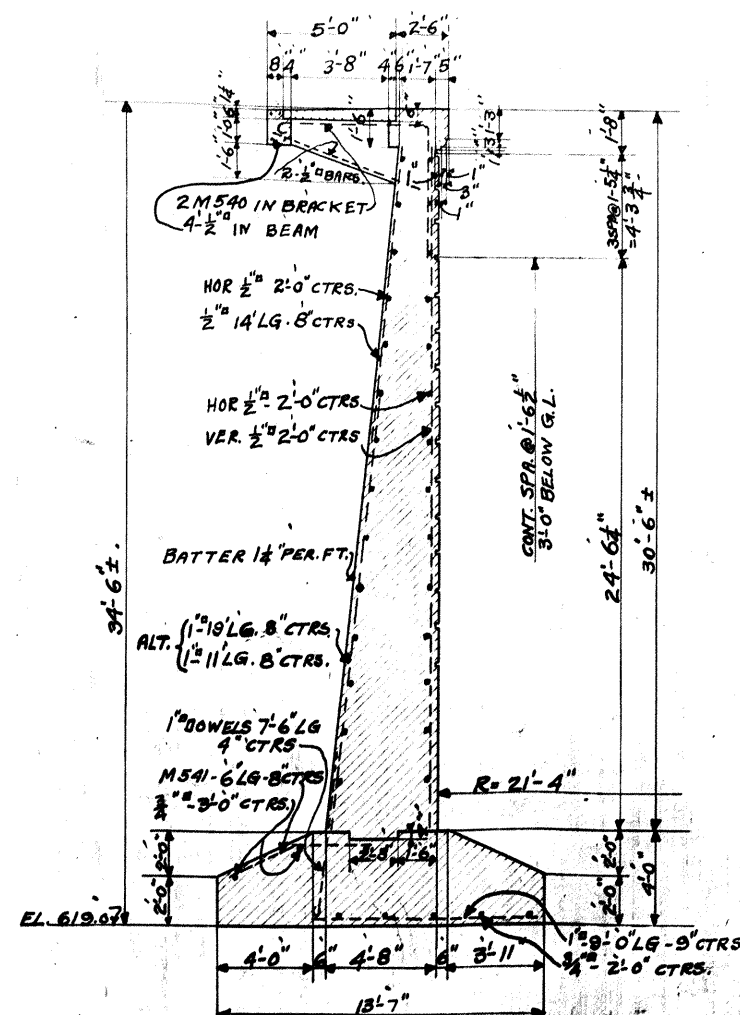


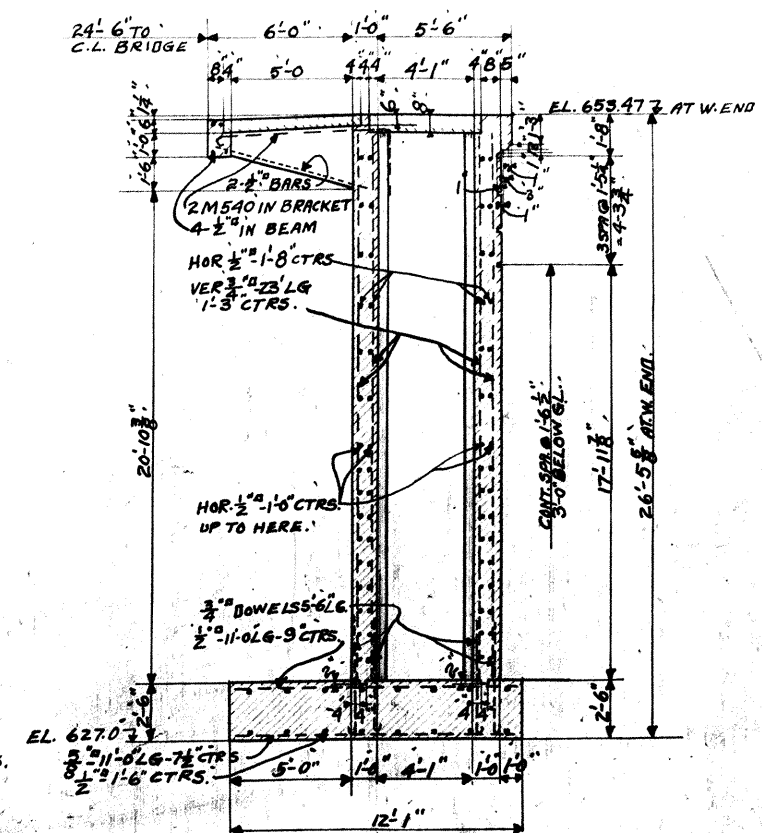
SECTION-BB



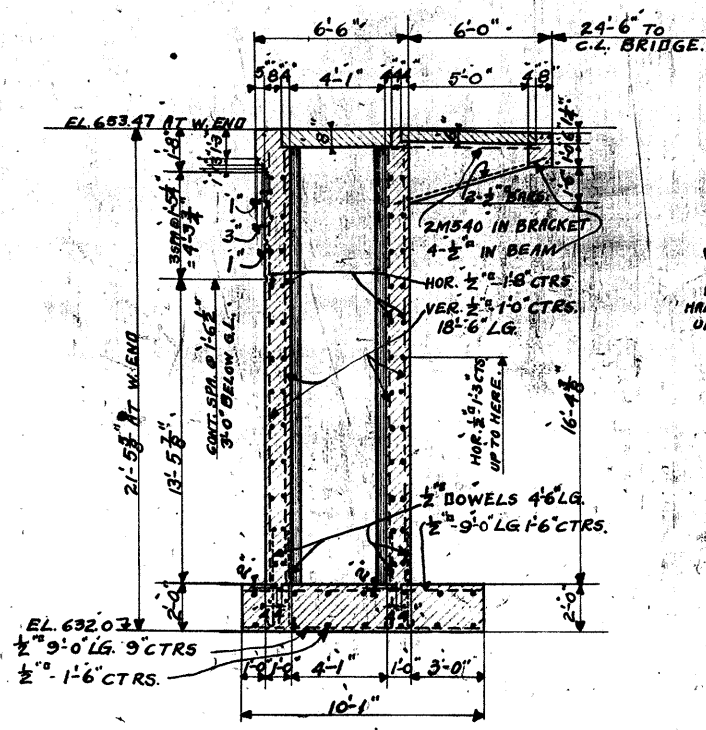
SECTION-CC



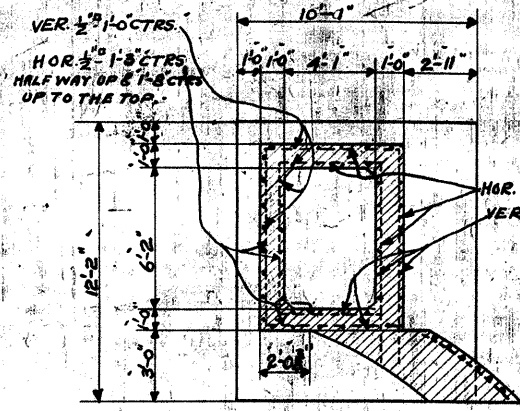
SECTION-DD



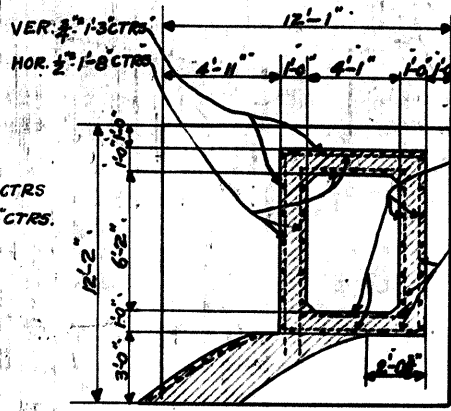
SECTION-EE



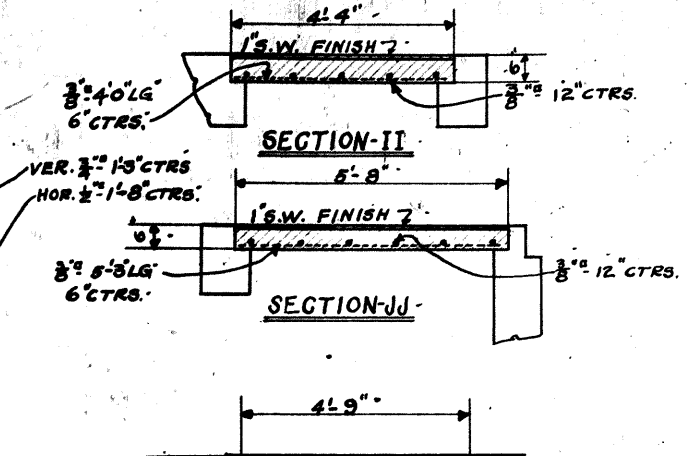
SECTION-FF



SECTION-GG

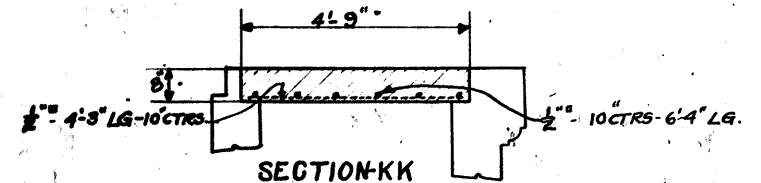


SECTION-HH



SECTION-II

SECTION-JJ



SECTION-KK

APPROVED July 21<sup>st</sup> 1919  
 J. C. Phillips COUNTY COMMISSIONERS  
 F. P. Freckley COUNTY COMMISSIONERS  
 H. E. Thompson COUNTY COMMISSIONERS  
 L. L. Harris COUNTY ENGINEER  
 STATE HIGHWAY COMMISSIONER

THE WATSON ENGINEERING COMPANY,  
 CLEVELAND, OHIO.  
 CHAGRIN RIVER VIADUCT,  
 WILLOUGHBY,  
 LAKE COUNTY, OHIO.  
 C.G. HARRIS - COUNTY ENGINEER.

DETAILS OF WEST ABUTMENT

DRAWING MADE	DRAWN BY	TRACED BY	CHECKED BY	DATE	APPROVED BY	DATE
JULY 20, 1919	R.E.P.	R.E.P.	FLG.	9-16-19	FLG.	9-16-19
REV. BY	DATE	REMARKS	SCALE			
0-1-1	7-2-19	WATER	SCALE 1/2" = 1'-0"			
				PRINT MADE		