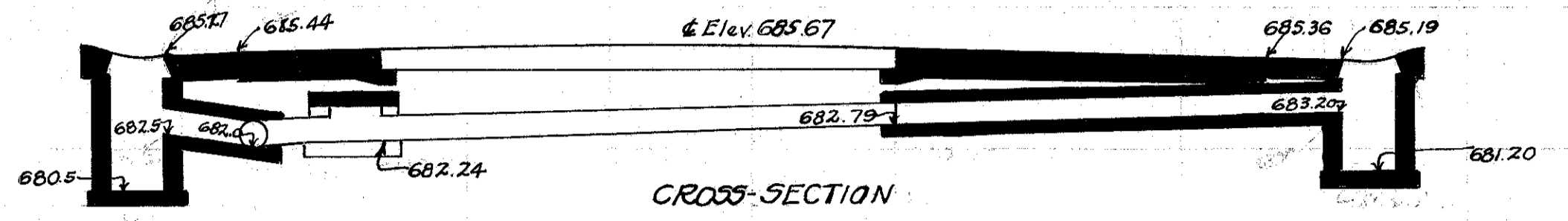
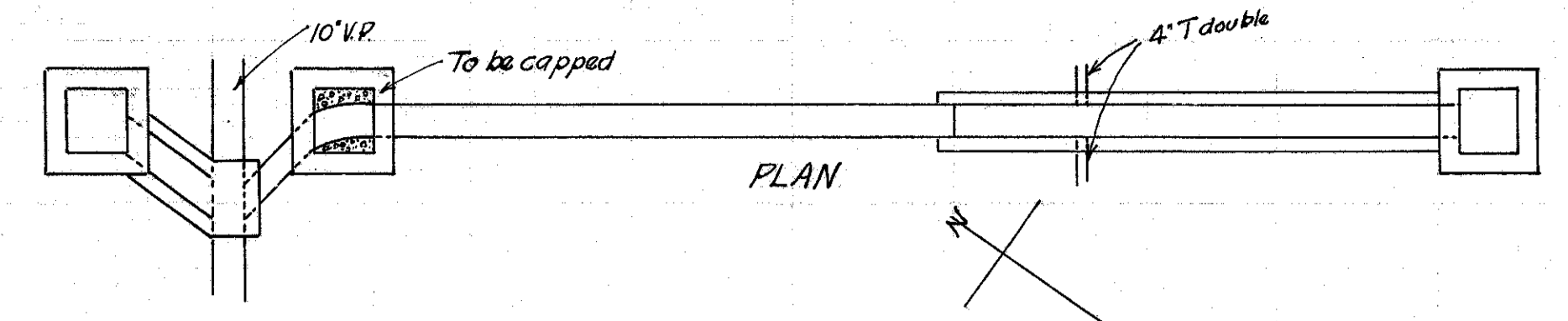


FED. RD. DIST. NO.	STATE	FED. AID. PROJECT	FISCAL YEAR
10	OHIO	519-B	1928

27
30

S.H.(I.C.H.) No. 2. SEC. H2 + MENTOR
LAKE COUNTY

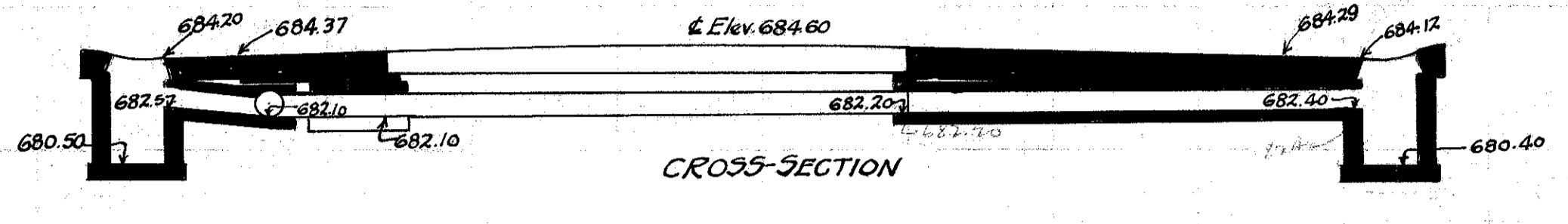
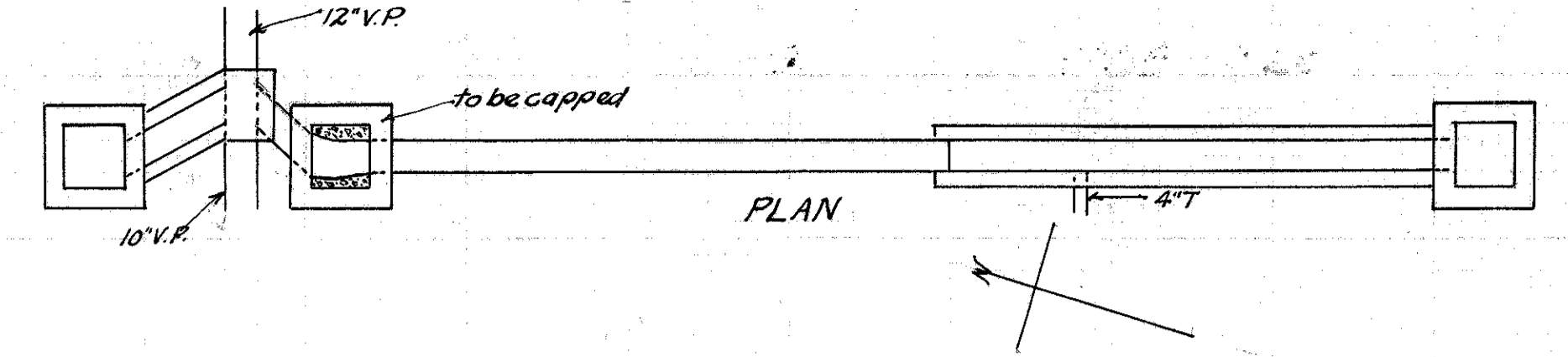


CULVERT DATA
Type: Std. V.S.P. culvert Dr.*300
Size: 10' x 20'
Work Req: Extend present culv. to R. with 10' x 16' std. V.P. enc. culvert. Connect 4" tile 4' to R. of pres. pave. Build C.B. R+L. On L. connect to pres. sewer with 10' x 4' V.P. enc. Cap old I.B. on L.
Drawn by Cumings + Plummer. Checked by L.A. Breen
Date 3/1/28 Date 3-12-28 Divn. Engr.

EST. QUANTITIES

Exc.	3.6	cu. yds.
Con 1-8	1.78	cu. yds.
Con 1-5 1/2 (precast cap)	0.2	cu. yds.
Reinf. Steel	2.2	lbs.
10" V.P.	18	lin. ft.
10' x 4" double T	1	
C.B. (old covers reset)	2	

Sta 104+99

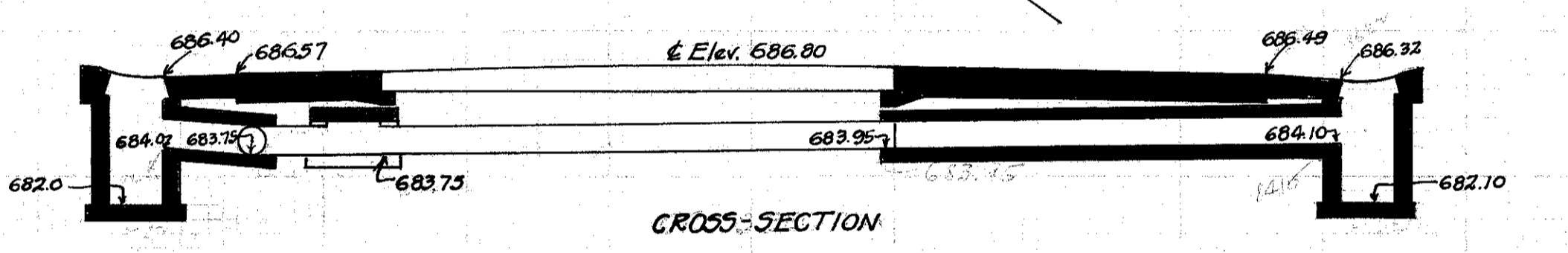
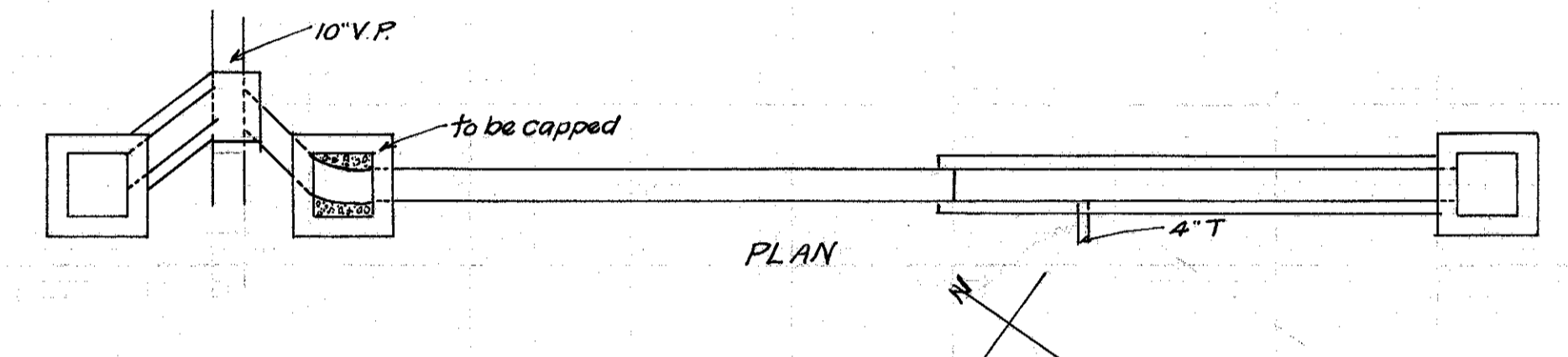


CULVERT DATA
Type: Std. V.S.P. culvert Dr.*300
Size: 10' x 20'
Work Req: Extend pres. culv. to R. with 10' x 16' std. V.P. enc. culvert. Connect 4" tile 4' R. of pres. pave. Build C.B. R+L. On L. connect to pres. sewer with 10' x 4' V.P. enc. Cap old I.B. on L.
Drawn by Cumings + Plummer. Checked by L.A. Breen
Date 3/1/28 Date 3-12-28 Divn. Engr.

EST. QUANTITIES

Exc.	3.1	cu. yds.
Con 1-8	1.78	cu. yds.
Con 1-5 1/2 (precast cap)	0.20	cu. yds.
Reinf. Steel	2.2	lbs.
10" V.P.	18	lin. ft.
10' x 4" T	1	
C.B. (old covers reset)	2	

Sta. 126 + 0

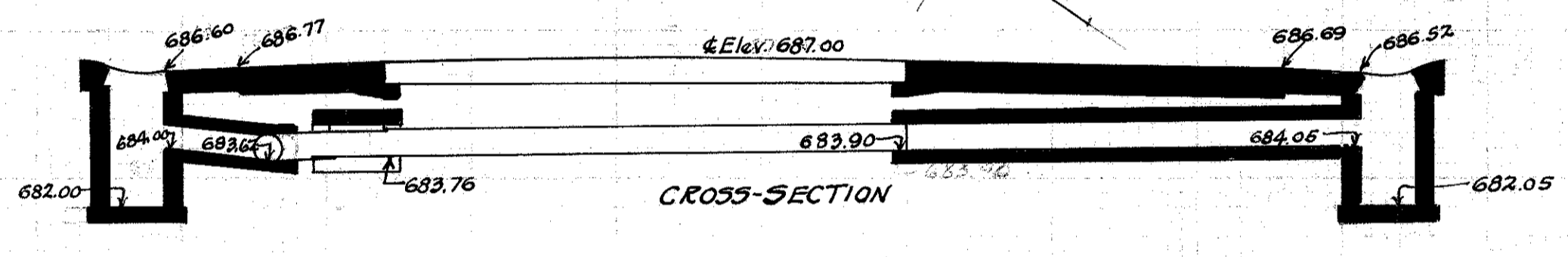
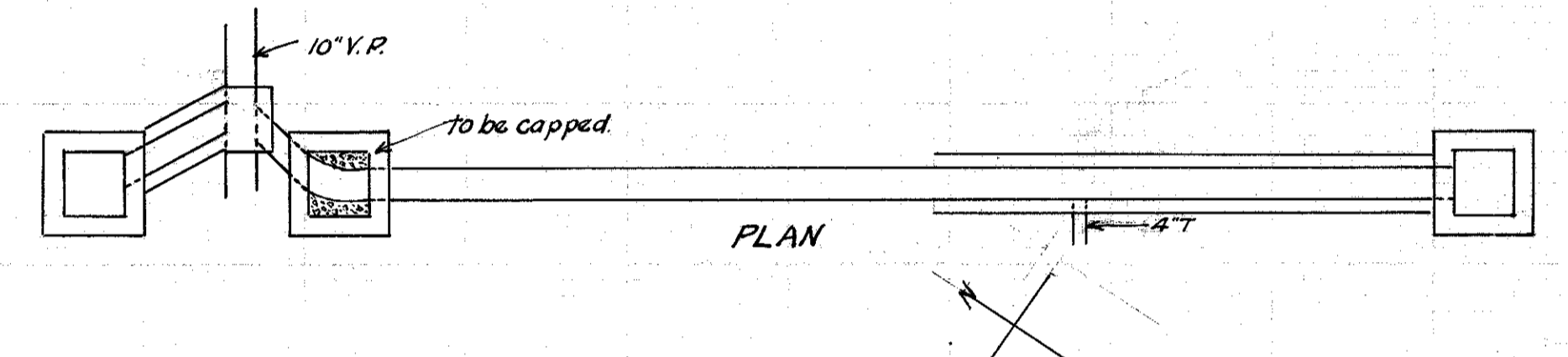


CULVERT DATA
Type: Std. V.S.P. culvert Dr.*300
Size: 10' x 20'
Work Req: Extend pres. culv. to R. with 10' x 16' std. V.P. enc. culvert. Connect 4" tile 4' to R. of pres. pave. Build C.B. R+L. On L. connect to present sewer with 10' x 4' V.P. enc. Cap old I.B. on L.
Drawn by Cumings + Plummer. Checked by L.A. Breen
Date 3/1/28 Date 3-12-28 Divn. Engr.

EST. QUANTITIES

Exc.	3.9	cu. yds.
Con 1-8	1.78	cu. yds.
Con 1-5 1/2 (precast cap)	0.2	cu. yds.
Reinf. Steel	2.2	lbs.
10" V.P.	18	lin. ft.
10' x 4" T	1	
C.B. (old covers reset)	2	

Sta 101+0

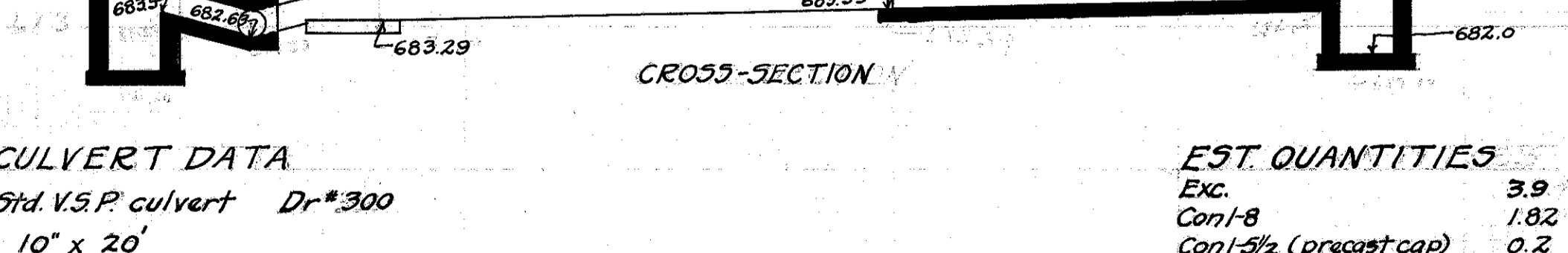
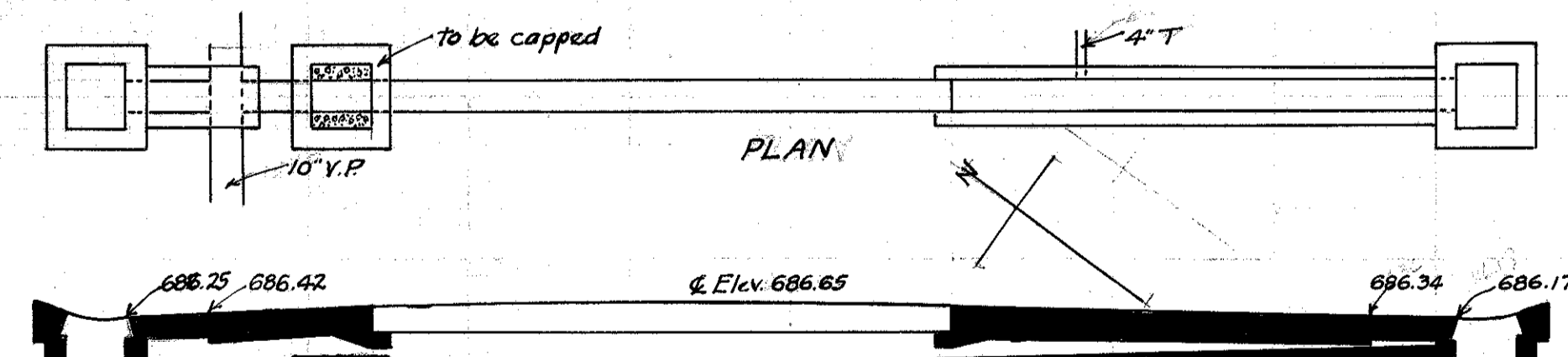


CULVERT DATA
Type: Std. V.S.P. culvert Dr.*300
Size: 10' x 20'
Work Req: Extend pres. culv. to R. with 10' x 16' std. V.P. enc. culvert. Connect 4" tile 4' R. of pres. pave. Build C.B. R+L. On L. connect to pres. sewer with 10' x 4' V.P. enc. Cap old I.B. on L.
Drawn by Cumings + Plummer. Checked by L.A. Breen
Date 3/1/28 Date 3-12-28 Divn. Engr.

EST. QUANTITIES

Exc.	4.9	cu. yds.
Con 1-8	1.78	cu. yds.
Con 1-5 1/2 (precast cap)	0.2	cu. yds.
Reinf. Steel	2.2	lbs.
10" V.P.	18	lin. ft.
10' x 4" T	1	
C.B. (old covers reset)	2	

Sta. 120 + 95

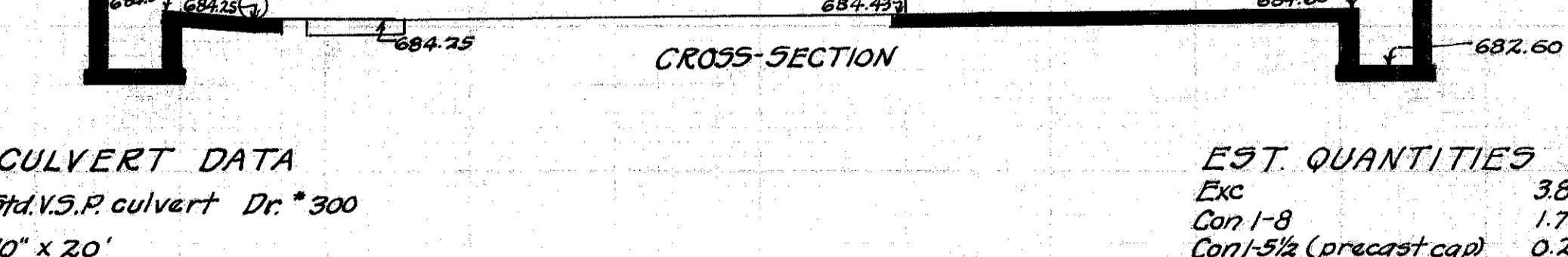
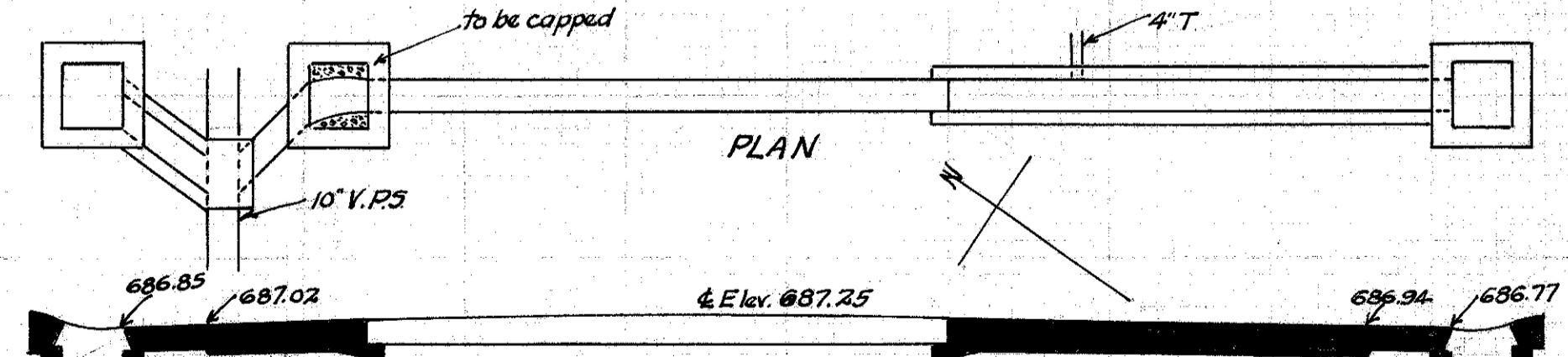


CULVERT DATA
Type: Std. V.S.P. culvert Dr.*300
Size: 10' x 20'
Work Req: Extend pres. culvert to R. with 10' x 16' std. V.P. enc. culvert. and to L. with 10' x 4' std. V.P. enc. culvert. Connect 4" tile 4' to R. of pres. pave. Build C.B. on R+L. Cap old I.B. on L.
Drawn by Cumings + Plummer. Checked by L.A. Breen
Date 3/1/28 Date 3-12-28 Divn. Engr.

EST. QUANTITIES

Exc.	3.9	cu. yds.
Con 1-8	1.82	cu. yds.
Con 1-5 1/2 (precast cap)	0.2	cu. yds.
Reinf. Steel	2.2	lbs.
10" V.P.	18	lin. ft.
10' x 4" T	1	
C.B. (old covers reset)	2	

Sta. 92+49



CULVERT DATA
Type: Std. V.S.P. culvert Dr.*300
Size: 10' x 20'
Work Req: Extend pres. culv. to R. with 10' x 16' std. V.P. enc. culvert. Connect 4" tile 4' R. of pres. pave. Build C.B. R+L. On L. connect to pres. sewer with 10' x 4' V.P. enc. Cap old I.B. on L.
Drawn by Cumings + Plummer. Checked by L.A. Breen
Date 3/1/28 Date 3-12-28 Divn. Engr.

EST. QUANTITIES

Exc.	3.8	cu. yds.
Con 1-8	1.78	cu. yds.
Con 1-5 1/2 (precast cap)	0.2	cu. yds.
Reinf. Steel	2.2	lbs.
10" V.P.	18	lin. ft.
10' x 4" T	1	
C.B. (old covers reset)	2	

Sta 110+52.