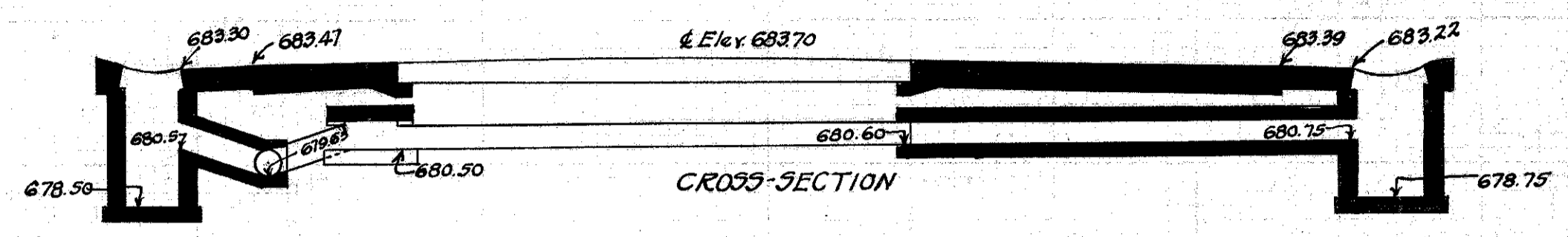
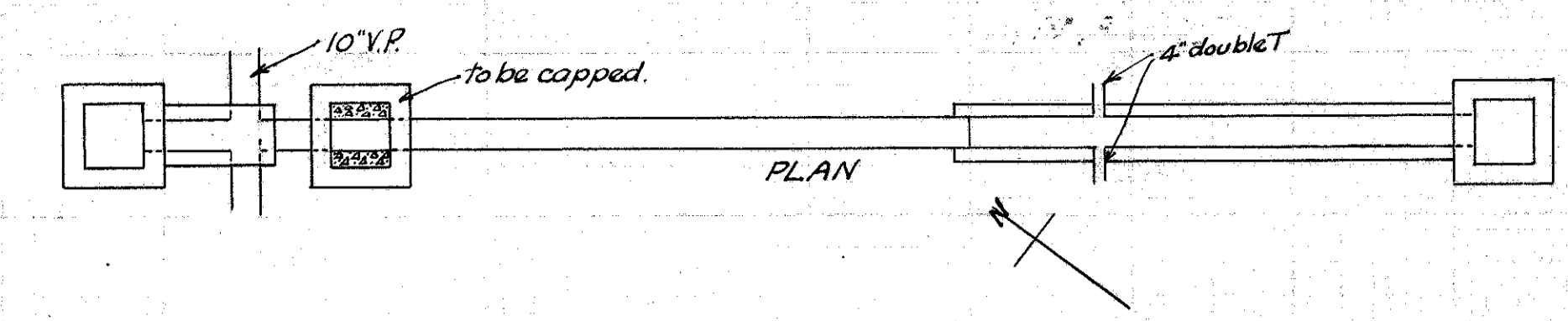


CULVERT DATA
 Type: Std. V.S.P. culvert Dr. #300
 Size: 10' x 20'
 Work Req: Extend pres. culvert to R with 10' x 16' std. V.P. enc. culvert
 Connect 4" tile 4' to R of pres. pave. Build C.B. R+L. On L connect to pres. sewer with 10' x 4" V.P. enc. Cap old I.B. on L.
 Drawn by Cumings + Plummer Checked by L.A. Breen
 Date 3/1/28 Date 3-12-28 Div'n Engr.

EST. QUANTITIES

Exc.	4.0	cu. yds.
Con. 1-8	1.78	cu. yds.
Con. 1-5 1/2 (precast cap)	0.20	cu. yds.
Reinf. Steel	2.2	lbs.
10" V.P.	18	lin. ft.
10' x 4" T	1	
C.B. (old covers reset)	2	

Sta. 76+50

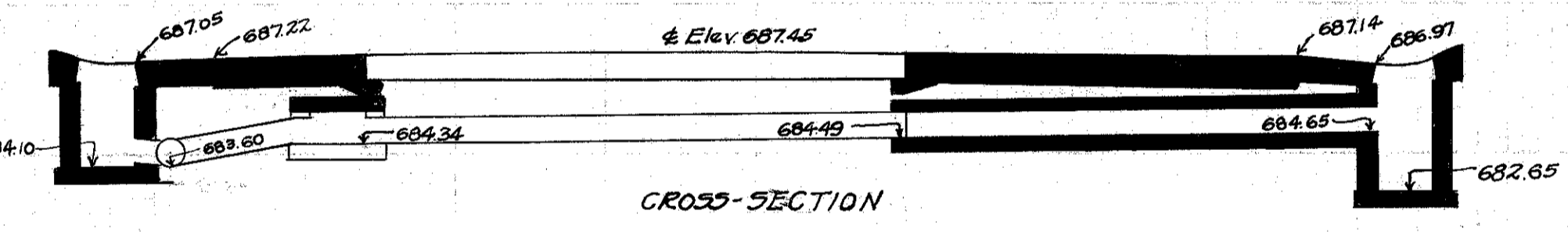
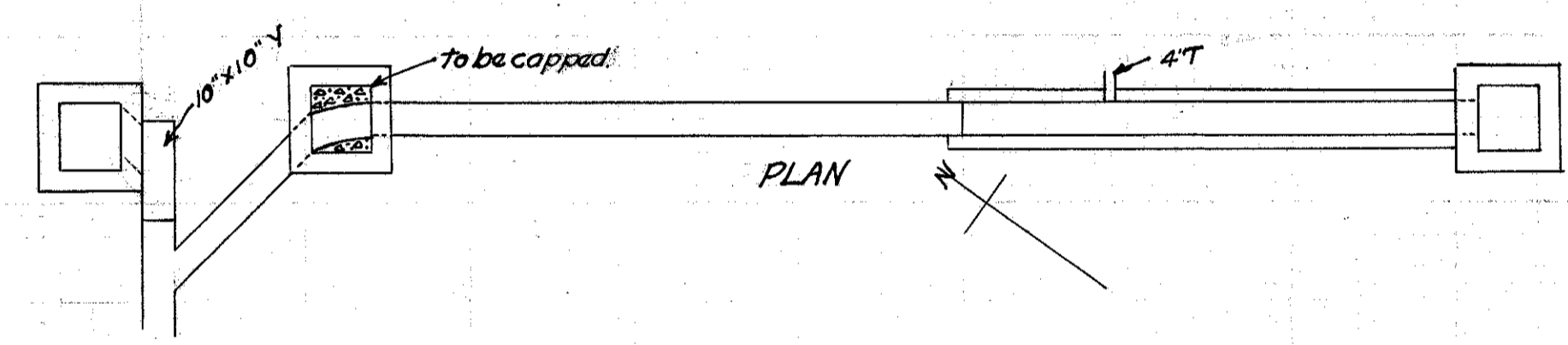


CULVERT DATA
 Type: Std. V.S.P. culvert Dr. #300
 Size: 10' x 20'
 Work Req: Extend pres. culv. to R with 10' x 16' std. V.P. enc. culvert and to L with 10' x 4" std. V.P. enc. culvert. Connect 4" tile 4' to R of pres. pave. Build C.B. R+L. Cap old I.B. on L.
 Drawn by Cumings + Plummer. Checked by L.A. Breen
 Date: 3/1/28 Date 3-12-28 Div'n Engr.

EST. QUANTITIES

Exc.	4.1	cu. yds.
Con 1-8	1.82	cu. yds.
Con 1-5 1/2 (precast cap)	0.2	cu. yds.
Reinf. Steel	2.2	lbs.
10" V.P.	18	lin. ft.
10' x 4" T double	1	
C.B. (old covers reset)	2	

Sta. 88+75

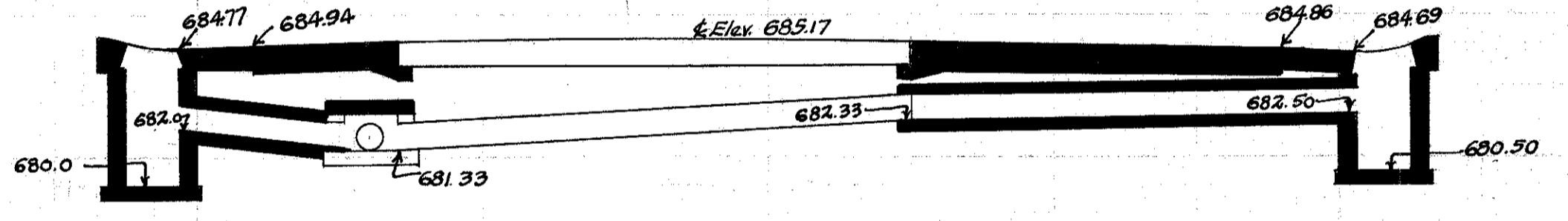
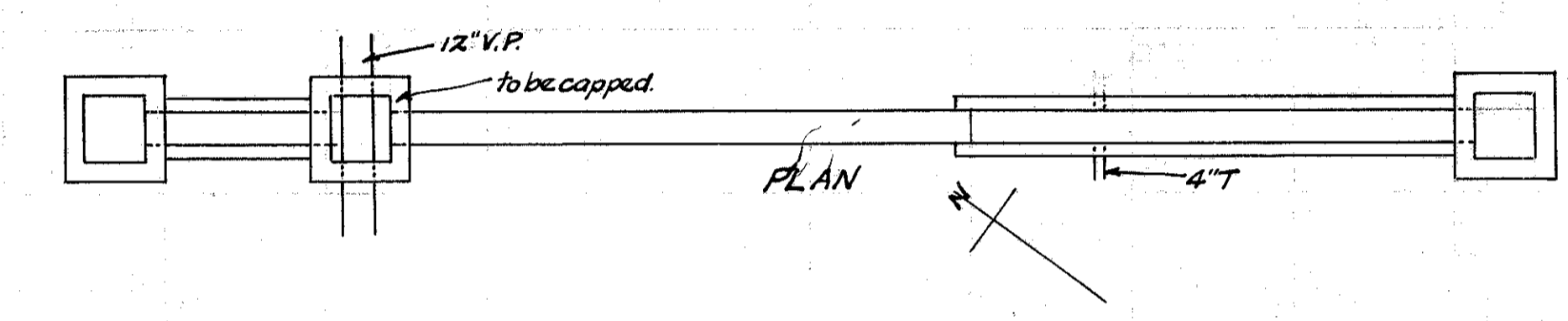


CULVERT DATA
 Type: Std. V.S.P. culvert Dr. #300
 Size: 10' x 16'
 Work Req: Extend pres. culv. to R with 10' x 16' std. V.P. enc. culvert
 Connect 4" tile 4' to R of pres. pave. Build C.B. on R. I.B. on L connecting to present sewer by 10' x 10" V.P. Cap old I.B. on L.
 Drawn by Cumings + Plummer. Checked by L.A. Breen
 Date 3/1/28 Date 3-12-28 Div'n Engr.

EST. QUANTITIES

Exc.	4.3	cu. yds.
Con 1-8	1.49	cu. yds.
Con 1-5 1/2 (precast cap)	0.2	cu. yds.
Reinf. Steel	2.2	lbs.
10" V.P.	14	lin. ft.
10' x 4" T	1	
10' x 10" Y	1	
C.B. (old cover reset)	1	
I.B. ()	1	

Sta. 66+99

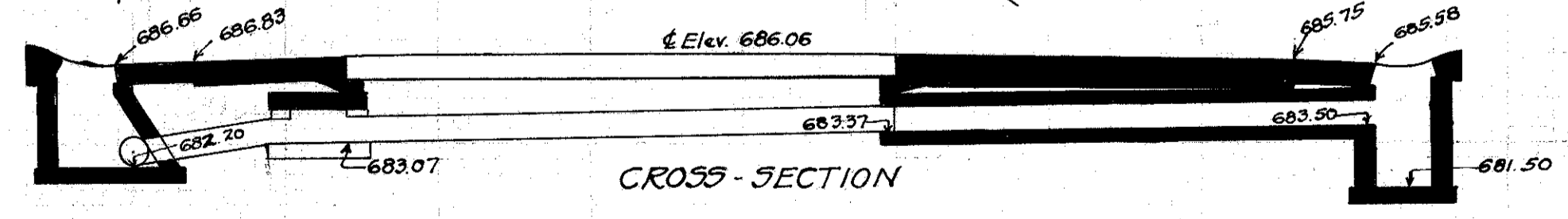
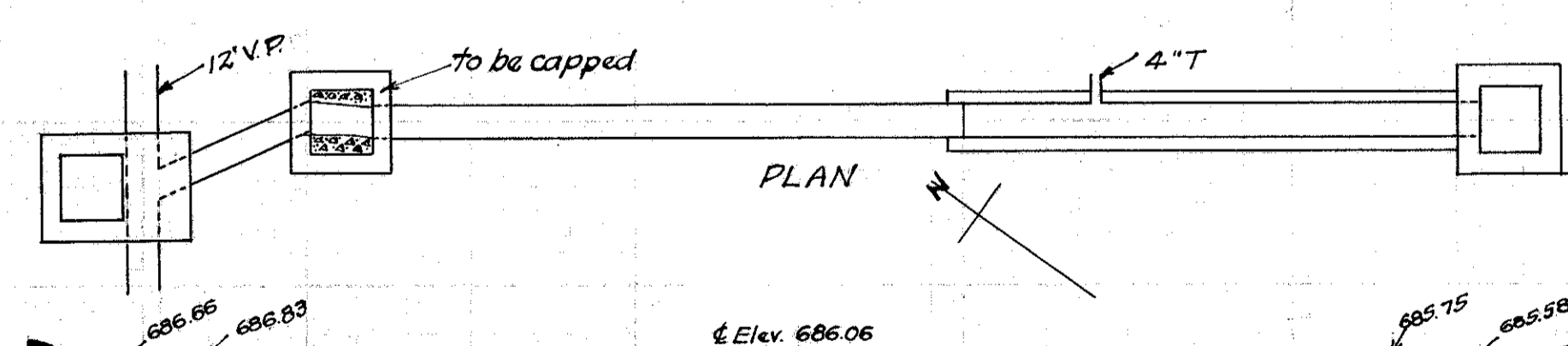


CULVERT DATA
 Type: Std. V.S.P. culvert Dr. #300
 Size: 10' x 22'
 Work Req: Extend pres. culvert to R with 10' x 16' std. V.P. enc. culvert and to L with 10' x 6" std. V.P. enc. culvert. Connect 4" tile 4' to R of present pave. Build C.B. R+L. Cap old I.B. on L.
 Drawn by Cumings + Plummer. Checked by L.A. Breen
 Date 3/1/28 Date 3-12-28 Div'n Engr.

EST. QUANTITIES

Exc.	4.1	cu. yds.
Con 1-8	1.92	cu. yds.
Con 1-5 1/2 (precast cap)	0.2	cu. yds.
Reinf. Steel	2.2	lbs.
10" V.P.	20	lin. ft.
10' x 4" T d	1	
C.B. (old covers reset)	2	

Sta. 84+26

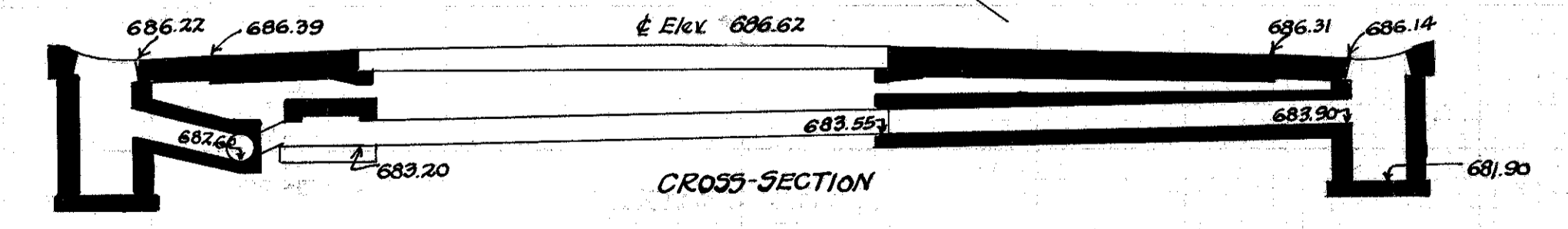
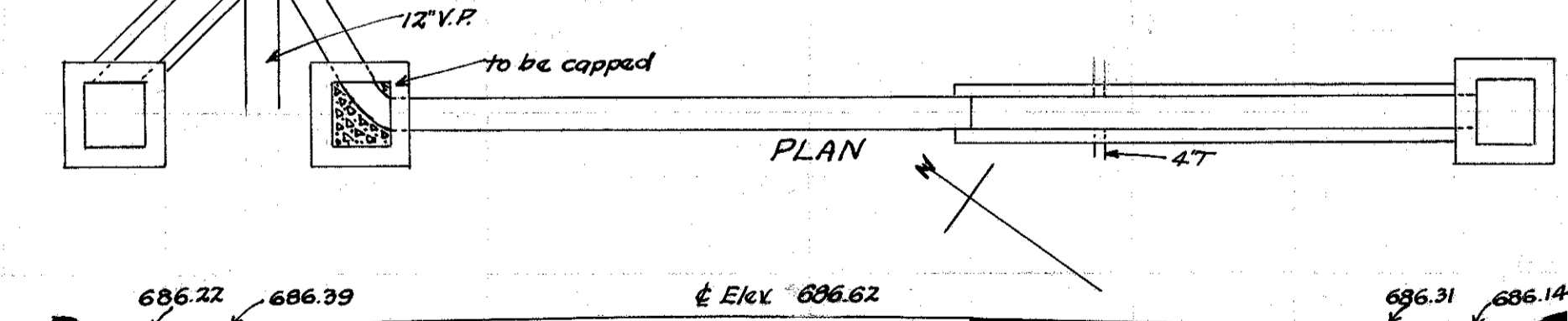


CULVERT DATA
 Type: Std. V.S.P. Culvert Dr. #300
 Size: 10' x 16'
 Work Req: Extend pres. culvert to R with 10' x 16' std. V.P. enc. culvert.
 Connect 4" tile 4' to R of pres. pave. Build C.B. on R. I.B. on L. over present sewer. Cap old I.B. on L.
 Drawn by Cumings + Plummer Checked by L.A. Breen
 Date 3/1/28 Date 3-12-28 Div'n Engr.

EST. QUANTITIES

Exc.	3.9	cu. yds.
Con. 1-8	1.49	cu. yds.
Con 1-5 1/2 (precast cap)	0.2	cu. yds.
Reinf. Steel	2.2	lbs.
10" V.P.	14	lin. ft.
10' x 4" T	1	
C.B. old cover reset	1	
I.B.	1	

Sta. 62+50



CULVERT DATA
 Type: Std. V.S.P. culvert Dr. #300
 Size: 10' x 24'
 Work Req: Extend pres. culvert to R with 10' x 16' std. V.P. enc. culvert.
 Connect 4" tile 4' to R of pres. pave. Build C.B. R+L. On L connect to present sewer with 10' x 8" V.P. enc. Cap old I.B. on L.
 Drawn by Cumings + Plummer. Checked by L.A. Breen
 Date 3/1/28 Date 3-12-28 Div'n Engr.

EST. QUANTITIES

Exc.	4.3	cu. yds.
Con 1-8	2.30	cu. yds.
Con 1-5 1/2 (precast cap)	0.2	cu. yds.
Reinf. Steel	2.2	lbs.
10" V.P.	22	lin. ft.
10' x 4" T	1	
C.B. (old covers reset)	2	

Sta. 79+95